



YOUR



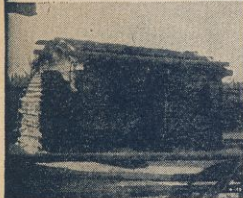
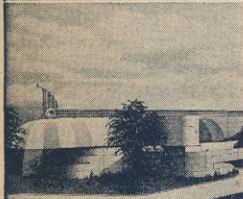
INTRODUCTION

TO A CENTURY OF PROGRESS

1934



OFFICIAL TOUR SERVICE



1934

**WORLD'S FAIR GRAY LINE
SIGHT-SEEING COMPANY**

Executive Offices: 10 North La Salle Street
CHICAGO, ILL.
Cable Address, Grayline, Chicago
Gray Line Telephone, FRANKLIN 3341

1934



\$1⁰⁰ OFFICIAL \$1⁰⁰ TOUR

OF

A Century of Progress

A 3 Hour PERSONALLY CONDUCTED COMPLETE TOUR AROUND the GROUNDS
AND

Through the Interior of the Principal Buildings

*Gray Line College Student Guide-Lecturer Conducts Each Tour
Each Group Is Limited to About 10 or 15 Persons, Assuring
Personal Attention.*

YOU ARE INVITED TO ASK QUESTIONS

NEW 1934 WORLD'S FAIR

See the interior and view the exhibits in all of the principal buildings.

SEE THE NEW 1934 WORLD'S FAIR FROM THE INSIDE

TOURS LEAVE EVERY 5 MINUTES

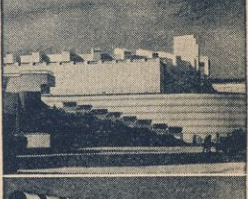
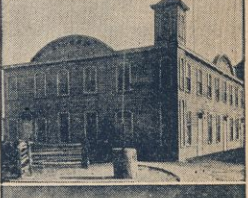
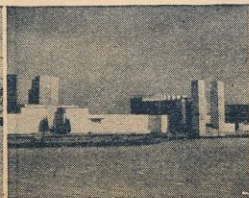
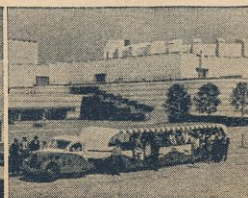
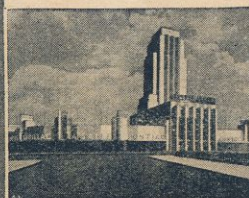
FROM 10:00 A. M. TO 7:00 P. M.

***Every Day Including Sundays and Holidays
from All Entrances of Exposition***

FARE OF \$1.00 PER PERSON INCLUDES EVERYTHING — MOTORBUS
TRANSPORTATION, GUIDE-LECTURER SERVICE, ETC.—NO OTHER CHARGES

**MAKE THIS TOUR YOUR INTRODUCTION TO
A CENTURY OF PROGRESS EXPOSITION**

GRAY LINE SIGHT-SEEING COMPANY OF CHICAGO



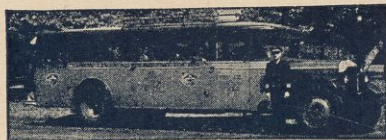
**GRAY LINE OFFICIAL CENTURY OF
PROGRESSGUIDE-LECTURERSAVAILABLE
FOR INDIVIDUALS AND PRIVATE
GROUPS ON THE FOLLOWING BASIS:**

	Per Hour
Individual Person	\$1.00
Two Persons	1.50
Three Persons	2.00
Four Persons	2.50
Five Persons	2.75
Six Persons	3.00
Seven Persons	3.25
Eight Persons	3.50
Nine Persons	3.75
Ten Persons	4.00

*For All Information and Reservations, Phone
Franklin 3341*

SEEING CHICAGO THE GRAY LINE

The Official World's Fair Sight-Seeing Company



**DO NOT LEAVE CHICAGO WITHOUT MAK-
ING OUR GRAY LINE TOURS. GRAY LINE OF-
FERS YOU THE MOST COMFORTABLE AND
ECONOMICAL MEANS OF SEEING AND
KNOWING CHICAGO, THE WORLD'S MOST
BEAUTIFUL AND PROGRESSIVE CITY.**

*Gray Line College Student Lecturers Accompany
All Gray Line Tours*

Gray Line Tours of Chicago leave World's Fair
Grounds and all other Gray Line starting points every
half hour, 8:00 A. M. to 8:00 P. M., every day includ-
ing Sundays and Holidays.

Secure beautiful Gray Line Souvenir Free Map and
Guide of Chicago from your Official Gray Line Cen-
tury of Progress Guide-Lecturer, or at any Gray Line
office on grounds or in Chicago.

GRAY LINE EXECUTIVE OFFICES

10 North La Salle St., Chicago, Ill.

*Telephone Franklin 3341 for All Gray Line
Information and Reservations*