

# WHITING PARKING TOWER

*Built for Nash Display • Century  
of Progress*



1884 • WHITING • 1934  
"50 YEARS OF PROGRESS"



## The Modern Way of Parking

The Auto-Parking Tower you see used here to display Nash automobiles is a regular commercial unit. This same system has been in successful operation as a car parking system for several years.

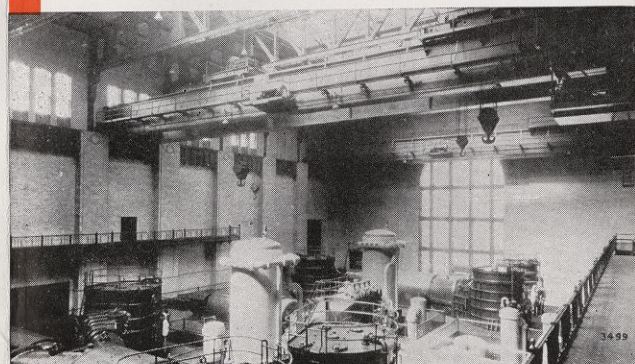
As a safe, speedy and convenient means of parking automobiles it has no equal. This self-serve system of parking cars to skyscraper heights (manufactured under the Morton patents) not only relieves traffic congestion but conserves valuable ground space and reduces operating costs through automatic handling.

Particularly adapted for use in connection with garages, office buildings, department stores, theatres and hotels.

Further particulars on request.

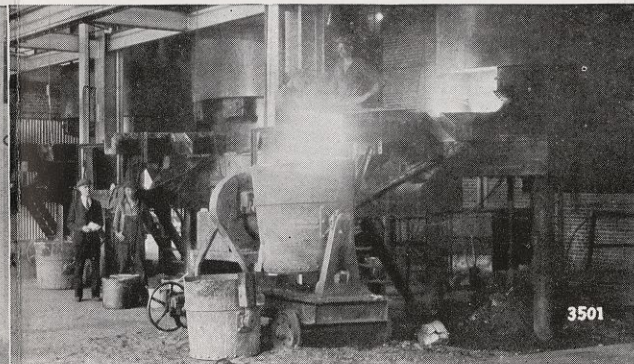
A day-time view of the Nash Tower at a Century of Progress Exposition. Here the Whiting Auto-Parking Tower serves as a unique display unit.

# WHITING SERVES ALL INDUSTRY • *Foundries, Steel Mills, Power Plants, Chemical Works, Railroad Shops, etc.*



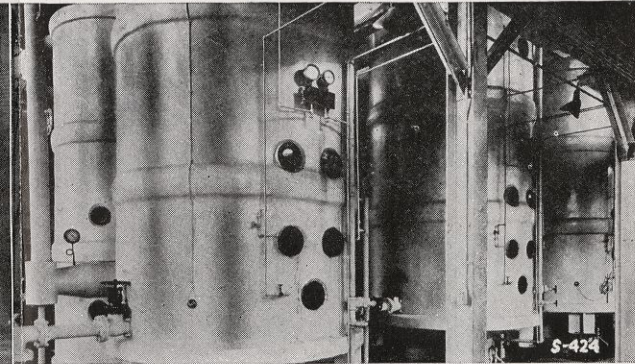
### Electric Traveling Cranes

for any capacity, span or lift. This turbine-handling crane is typical of large power plant installations.



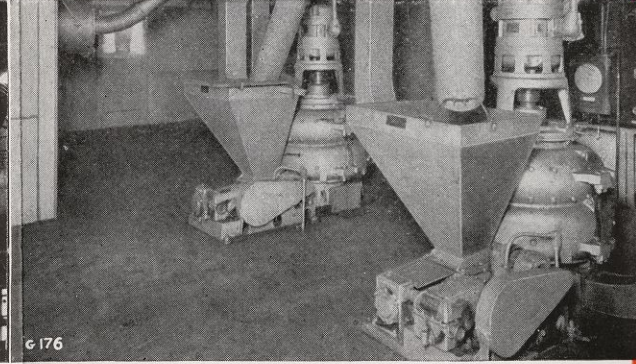
### Foundry Equipment

Most of the gray iron produced today is melted in Whiting cupolas — the standard iron melter since 1884. Whiting also makes ladles, tumbling mills, dust filters, rotary furnaces, etc.



### Swenson Evaporators

Through its subsidiary, the Swenson Evaporator Co., Whiting serves the chemical plants with modern evaporating equipment for the concentration of acids, foods, caustic, etc.



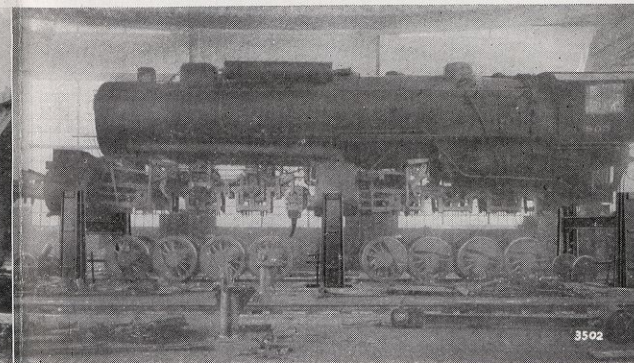
### Pulverized Coal Equipment

Whiting excels in the production of coal pulverizing, conveying and firing equipment for the use of foundries, power plants, forge shops, cement works, etc.



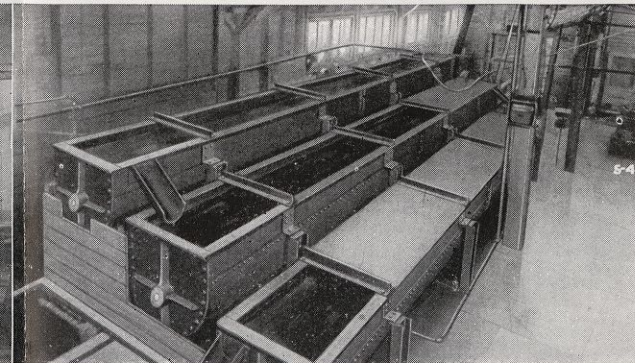
### Electric Gantry Cranes

A 350-ton gantry crane in the recently constructed hydro-electric plant at Ariel, Wash. The largest crane of its kind for this service.



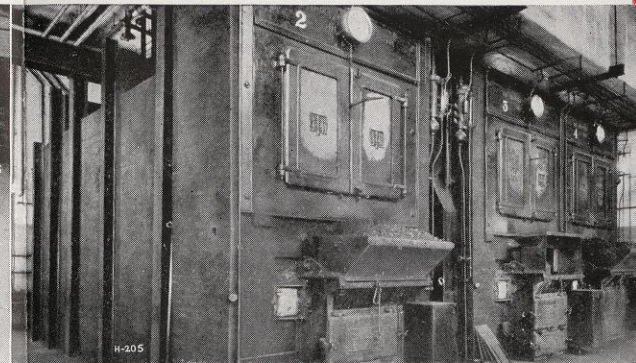
### Railroad Shop Equipment

Electric screw-jack hoists for removing the wheels from locomotives and cars are one of numerous cost-reducing items made by Whiting for railroad shops and terminals.



### Crystallizers and Filters

Various types of crystallizing and filtering equipment are made by Swenson Evaporator Co. for the process industries.

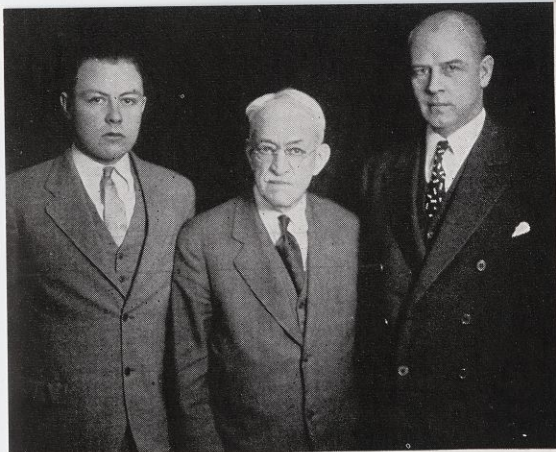


### Automatic Stokers

A complete range of types and sizes brings the benefits of stoker firing within reach of all — from small home to large factory.

FOR MORE INFORMATION ON ANY OF THESE LINES LEAVE YOUR NAME AND ADDRESS WITH THE ATTENDANT

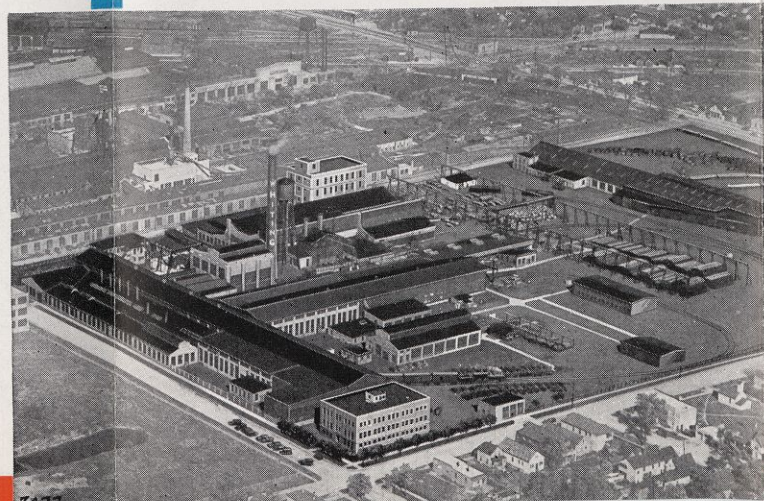




Three Generations in Active Management:  
Mr. J. H. Whiting (Founder), Chairman of Board  
Gen. T. S. Hammond, President and General Manager  
Mr. S. H. Hammond (Grandson of Founder), As-  
sistant to President.



Aerial photograph of the Whiting plant at Harvey,  
Ill. (Chicago Suburb). Complete facilities for fabri-  
cating, machining, forging, welding assembling and  
erecting.

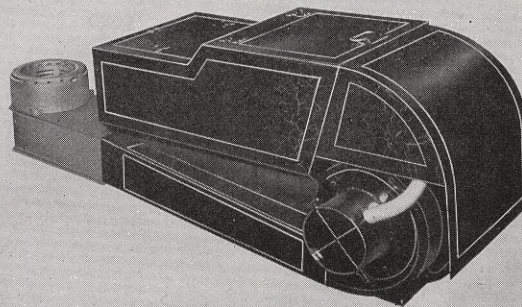


## *This is Whiting's 50th Year.*

This is our 50th Anniversary. Beginning as the pioneer manufacturer of foundry equipment in 1884, Whiting has grown into a corporation serving practically all industry with a diversity of engineering products.

The domestic stoker is our latest addition and extends our scope of service to the home and to commercial establishments as well as industry.

With justifiable pride, the officers and directors commemorate a half century of progress and service by paying tribute to the one man — Mr. J. H. Whiting — whose courage, foresight and unflinching energy so largely account for the success attained. Mr. Whiting is still active in the management of the company — he is still a pioneer.



Whiting Underfeed Stoker, Domestic Type,  
Requires only 4 ft. space in front of furnace.

### **AUTOMATIC HEAT**

*...for Your Home at lower cost  
than hand firing*

At last the luxury of automatic heat is within reach of every home owner. With a Whiting Domestic Stoker you have all the advantages of more expensive methods of heating but at lower cost than even hand firing.

### **Greater Comfort -- Better Health**

These are two outstanding advantages. Children living in Whiting stoker-heated homes have fewer colds. The entire family shares the benefits of this perfectly controlled heating device. Gone are ashes and soot. No more wasted coal — no cold floors — no fussing with dampers and drafts — no more running up and down the basement stairs. The Whiting stoker feeds the coal automatically and maintains a uniform room temperature in any weather.

Equally suitable for steam, hot water or vapor boilers, or for hot air furnaces — in homes or the smaller commercial houses.

Leave your name for further information.

**GIVE YOUR HOME  
AUTOMATIC HEAT  
with Low Priced Coal!**

This is a hot water  
installation.

Whiting Stokers  
work equally well  
on steam or hot air.

Automatic control  
in all cases.

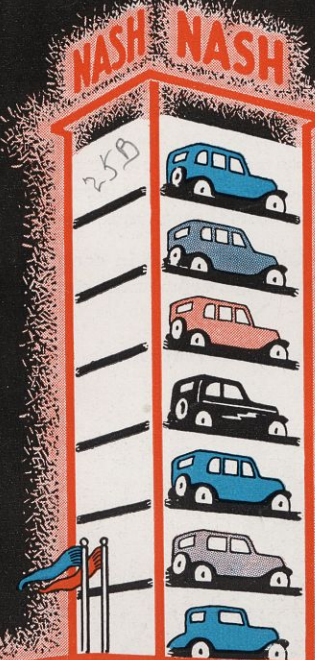


Requires only 4 ft. space in front of furnace

### **WHITING STOKER**

*Automatic Heat for the Home at Lowest Cost*

**WHITING PARKING TOWER**  
*Built for Nash Display-Century  
of  
Progress*



**1884 • WHITING • 1934**  
**"50 YEARS OF PROGRESS"**



# GIVE YOUR HOME AUTOMATIC HEAT *with Low Priced Coal!*

This is a hot water  
installation.

Whiting Stokers  
work equally well  
on steam or hot air.

Automatic control  
in all cases.



Requires only 4 ft. space in front of furnace

## WHITING STOKER

*Automatic Heat for the Home at Lowest Cost*