

12

THE COUNTRY HOME MODEL FARM HOUSE

10 CENTS



A CENTURY OF PROGRESS • CHICAGO • 1934

COPYRIGHT 1934 BY
THE CROWELL PUBLISHING COMPANY
NEW YORK

•

Publishers of
WOMAN'S HOME COMPANION • THE AMERICAN MAGAZINE
COLLIER'S, THE NATIONAL WEEKLY • THE COUNTRY HOME

THE COUNTRY HOME MODEL FARM HOUSE

THE IDEAL FARM HOME OF TODAY AND TOMORROW

THE COUNTRY HOME, national farm magazine published by The Crowell Publishing Company, presents in the following pages The Country Home Model Farm House as exhibited at "A Century of Progress" Exposition in Chicago. This Model Farm House was conceived as part of The Country Home's service to its readers, and to rural people generally, in promoting greater comfort and convenience in farm living. Its introduction now is especially appropriate in view of the new National Housing Act which will make available for the first time in years hundreds of millions of dollars of credit for home building, repair and remodelling.

The Country Home Model Farm House was constructed and completely equipped at "A Century of Progress" Exposition in Chicago to demonstrate how the latest and most modern ideas in home planning, construction and equipment could be applied

to produce a farm home of super comfort, convenience and practicality at low cost. The Country Home Model Farm House as constructed and exhibited at the World's Fair can be constructed anywhere in the United States at a cost of approximately \$5,000. It contains thirteen rooms and bath, a unique second floor porch or sun deck, and includes a combination living room - dining room, kitchen, laundry, garage, milk room, farm office and four bedrooms.

This practical farm house is absolutely devoid of freakishness, as well as out-moded ideas. The innovations (and there are many) are answers to definite rural needs. Thousands of farm people who have visited this house at "A Century of Progress" have been amazed at the way scientific planning and a deep knowledge of the problems of farm living, have foreseen and answered the many demands

made by the individual members of the household.

Standard materials are used throughout in the construction and furnishing of the Model Farm House. Nationally known manufacturers and distributors have cooperated whole-heartedly in its construction, equipment and decoration. Without their aid this model rural home could not have been built. Therefore, The Country Home wishes to make acknowledgment of their helpfulness in furnishing materials, products and sound suggestions.

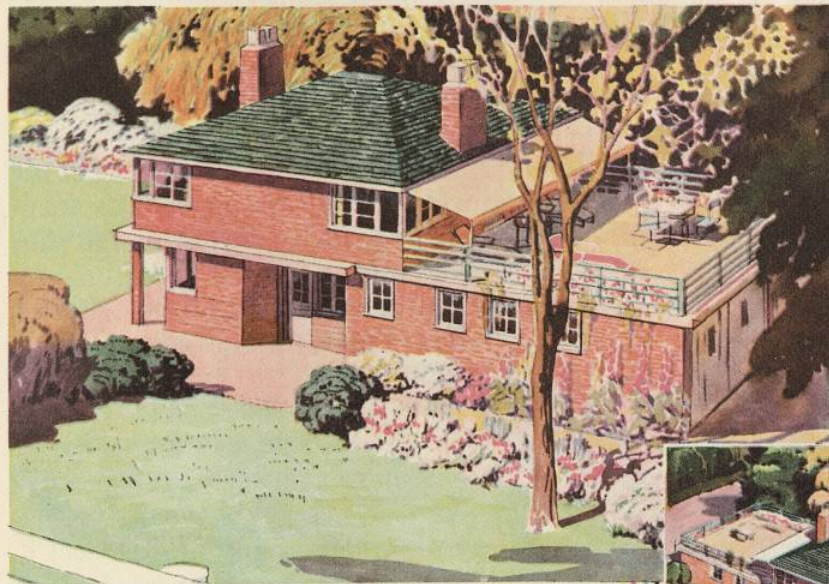
A complete description of the Model Farm House

is contained in this booklet together with a list of contributing manufacturers and the materials used.

For the convenience of the reader who may contemplate building such a house or remodelling his old house a return postcard is enclosed. It lists the types of materials and products that have gone into the construction, equipment and furnishing of the house. If you will check on this postcard the items in which you are particularly interested, sign your name and address, and mail the card, The Country Home will be glad to see that you receive more detailed information. This card requires no postage.



THE COUNTRY HOME MODEL FARM HOUSE



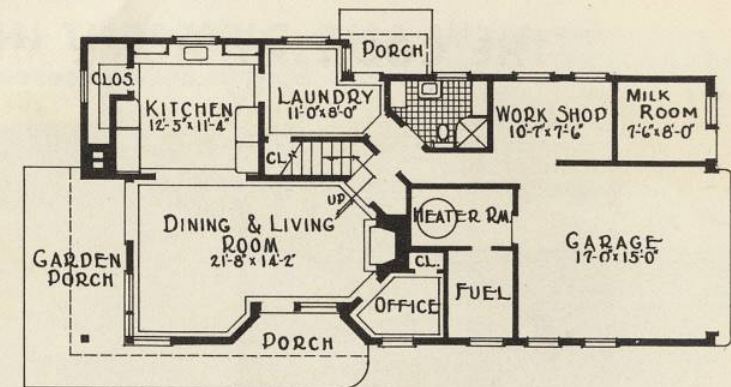
LIEF ERICKSON DRIVE
SOUTH GATE
A CENTURY OF PROGRESS
CHICAGO, 1934



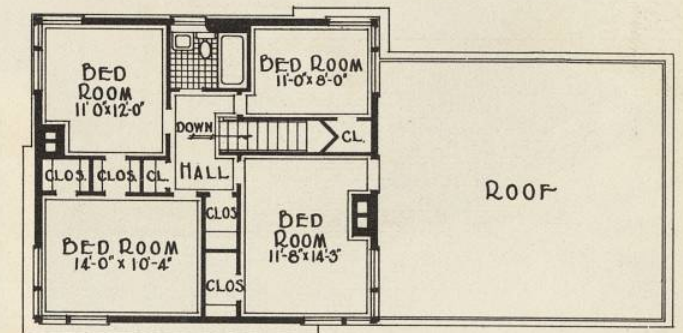
*Holsman and Holsman
Architects, Chicago*

FIRST AND SECOND FLOOR PLANS

FIRST FLOOR



SECOND FLOOR

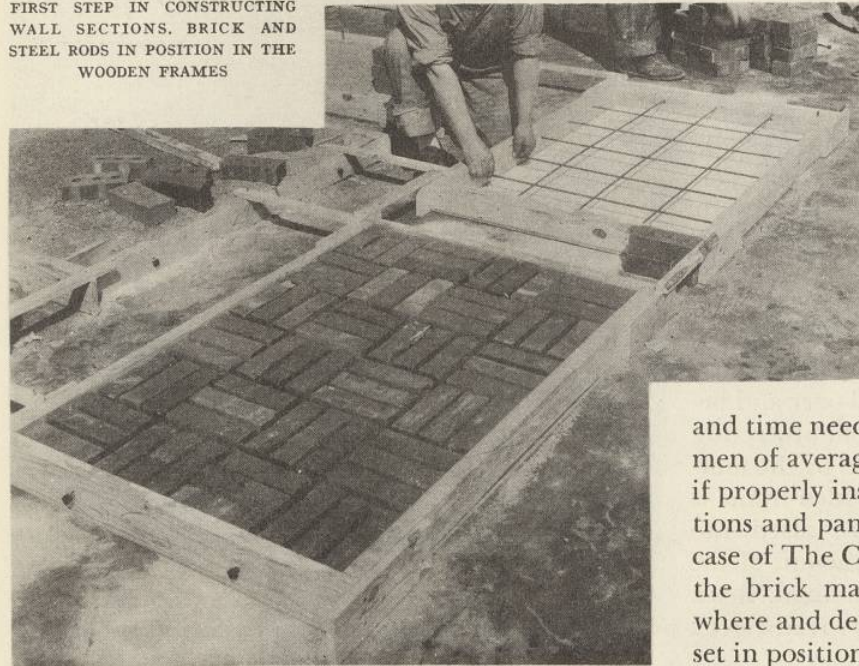


Interior decorations by The Country
Home Household Department assisted
by Lurelle Guild and Harry Richardson

NEW AND DIFFERENT IN CONSTRUCTION

Fireproof—Easy to Build—Economical—Strong—Durable

FIRST STEP IN CONSTRUCTING WALL SECTIONS. BRICK AND STEEL RODS IN POSITION IN THE WOODEN FRAMES

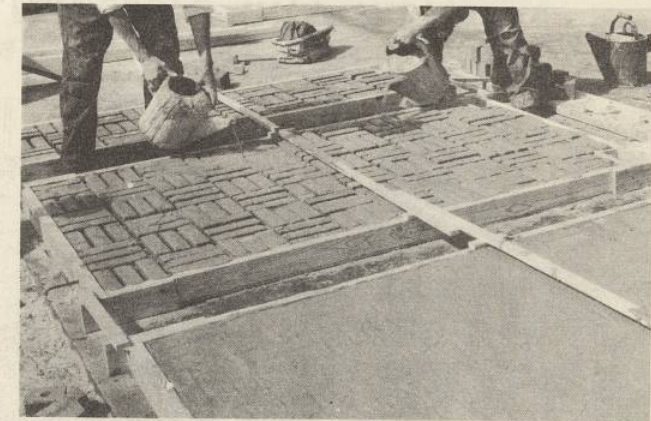


THE COUNTRY HOME MODEL FARM HOUSE utilizes a new method of construction and is the first house to be built in this way in the United States. The walls of the house are of brick, reinforced with steel rods—but the “bricks were laid horizontally.” The process of “pre-casting” walls, as this method is known, is a great boon to rural home construction. It is a method particularly adaptable to farm buildings because it not only reduces the cost

and time needed, but involves a type of work which men of average skill and mechanical ability can do, if properly instructed. The casting of these wall sections and panels may be done on the spot as in the case of The Country Home Model Farm House—or the brick may be pre-cast into wall sections elsewhere and delivered to the building site ready to be set in position.

In this type of construction one brick does the work of two or three, thereby effecting a great saving in building costs. That is because the brick walls, reinforced with steel rods, need only be four inches thick (the thickness of one brick) instead of eight inches (or two bricks' thickness) as in the ordinary wall.

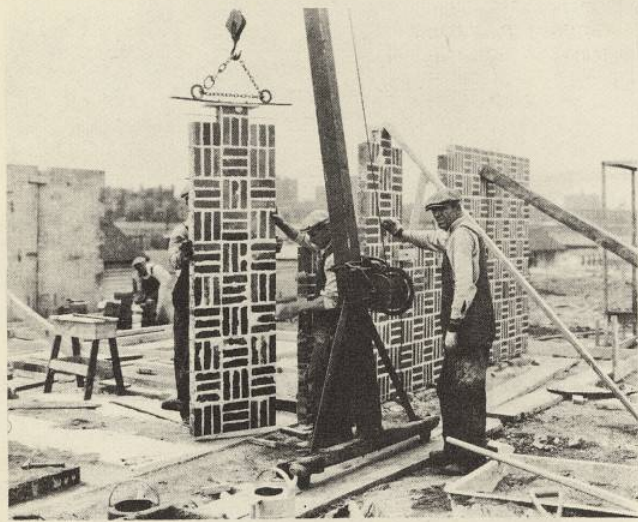
This is how it is done: A wooden frame like a large shallow box without top or bottom is constructed on a flat, level surface. Steel rods are placed at right angles in the frame, held by holes made for the purpose in the sides of the frame. The rods divide the frame into squares, exactly $8\frac{1}{2}$ inches each way. The bricks are then placed between the rods, resting on a layer of sand which has been spread over the bottom surface. Cement mortar is then poured over and between the brick, the sand on the bottom protecting the face of the brick from being defaced by the mortar. When the cement hardens the wooden frame is removed and wall sections so made are raised into position. Thus the walls go up in a fraction of the time needed by the old brick-laying method. Brick molded in this way has a strength equal to reinforced concrete. Naturally the wall sections may be made



SECOND STEP. BINDING THE BRICK AND STEEL RODS WITH CEMENT MORTAR

any size, to allow for window and door spaces. If a brick finish exterior is not desired, the walls may be painted.

The model farm house as it stands at “A Century of Progress” in Chicago is of red brick, in an interesting pattern, the roof is green and the large sun-deck roof and awning carry out the verde tone. The windows and trim are cream colored and so is the ship-like railing on the sun deck.



SETTING THE WALL SECTIONS IN PLACE

Anyone contemplating building this house need not be confined to this color scheme. Another plan, for example, which would be very effective, would be to paint the brick walls a cream color, make the roof of red shingles and have the windows and trim a cool blue-green.

In the Model Farm House, the interior partitions of the first floor are also built of reinforced brick slabs, to lend strong support to the second story.

The floors of the farm house are made of concrete, covered with regular floor coverings. The concrete is poured into patented steel "I pans," which are bolted together to receive the cement. At the corners of the house, and along each side, these pans are bolted with steel bars to the fabricated brick walls, making the house virtually one piece. It is practically a hurricane-proof farm house as well as fire-proof.

The roof is made in much the same way as the floors, with the exception that the steel pans receive a new type of insulating material made of shavings mixed with cement. These insulated pans do much to keep the house cool in summer and warm in winter. Over these pans on the roof goes a thin layer of tar which hardens, and over this tar, heavy asbestos shingles.

Carrying out the idea of making The Country Home Model Farm House as insulated as possible are the windows in the house. Instead of a single sheet of glass, the windows in this house are made of

double panes of glass with air space between. This prevents frost forming on the windows, does away with the added expense of storm windows in winter—and insulates the house where heat wastage is usually highest—at the windows. Most of the rooms have large corner windows that admit floods of light and sunshine. Another innovation is the fact that the



SHOWING "I PAN" CONSTRUCTION OF SECOND FLOOR WITH CEMENT BEING POURED INTO THE STEEL PANS

rustless screens (all windows and doors are screened) are inside the windows. The windows open outward, utilizing an easy method of opening and closing without opening the screens.

The Country Home Model Farm House is completely weatherstripped, and metal cornices of modern design lend added strength and protection.

Flooring, walls and ceilings are of modern standard materials; they are durable, good looking, and easy to clean. Any one building this house would have no difficulty in duplicating the materials used, in practically any section of the country.

A very appropriate note is the fact that the paint used on the exterior trim of The Country Home Model Farm House is Soya Bean Paint, made from the soy bean, which, as Henry Ford said, is the crop which links farming directly with industry.

See page 34 for manufacturers and suppliers who cooperated in the construction of The Country Home Model Farm House

COMBINATION LIVING-DINING ROOM (21'8" x 14'2")



THE LIVING ROOM SECTION OF THE COMBINATION
LIVING ROOM - DINING ROOM

THE FRONT DOOR of the house opens directly from the front porch into the spacious L-shaped living-dining room. The floor of this room is covered with dark brown composition material which is very durable and easy to clean. Over this is a brown colored rug. The walls are painted a cool green and are finished with wallboard. (There isn't any plastering in this house.) Fluted pilasters cover the seams where

the sections of the wallboard are joined together.

A large window extends around the corner of the room, and with the two large doors, plenty of light is admitted. The main center of interest in the living-dining room is the mirrored fireplace framed with shining black glass which extends to the ceiling.

The fireplace-heater unit is of new design and gives the maximum amount of heat. For in addition to the heat which is thrown out normally by the fireplace, the heat that rises in the chimney is deflected out through the room by two grilles which are on either side of the wall near the ceiling.

The ceiling is steel, painted cream and is really the lower surface of the second story floor. The faint lines where the ceiling sections are joined together lend an interesting decorative note.

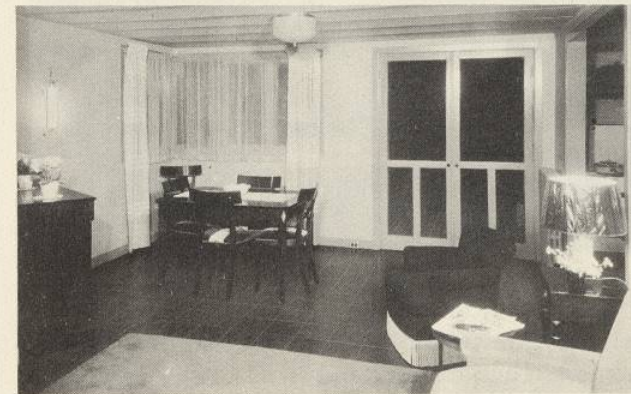
The furniture is of classic design, brown and cream colored, to suit the



ANOTHER VIEW OF THE
LIVING ROOM

tastes of up-to-date people. Just as the architects made the house modern without going to extremes, the furniture is modern, sturdy and practical without being freakish. It is upholstered in serviceable fabrics, such as corduroys, mohairs and new cotton velvet weaves, which are practically stainless.

The living room furniture is grouped around the fireplace. At the other end of the room near the windows is placed the dining room furniture. It is a room adapted to the quickly changing needs of a



THE DINING ROOM SECTION

farm family. If more room is needed for living room activities, the dining section may be used, and if a large party is coming to dinner, the dining room table can be extended into the living room. The curtains in this room are of ecru net, and the draperies of serviceable, linen-like material in white and yellow.

The lighting fixtures (side lights and ceiling domes) are of copper, chromium plated, new and modern, and making effective use of frosted glass. White and brown table lamps flank the large divan, and white flower vases of fluted design lend charming accents.

FURNISHINGS AND EQUIPMENT

- | | |
|------------------------------------|-----------------------------|
| 1 Square dining room table | 2 Occasional tables |
| 5 Dining room chairs | 2 Table lamps |
| (directoire influence) | 4 Flower jars with flowers |
| 1 Sideboard (directoire influence) | 1 Rug |
| | Ash trays, cigarette boxes |
| 1 Tan divan | Pottery bowl |
| 1 Tan large easy chair | Mirror table centerpiece |
| 1 Brown upholstered chair | 3 Side lighting fixtures |
| 2 End tables | 2 Lighting domes in ceiling |
| | 1 Radio |

See page 34 for list of exhibiting manufacturers

KITCHEN

12' 5" x 11' 4"

Including Large Storage Pantry for Preserves and Packaged Foods

THERE IS NO door separating the kitchen from the dining room. A movable screen divides the two. This is just another indication of how this Model Farm House was designed to make rural living functions as simple and as scientific as possible. No door to bang into or try to open when hands are full of dishes.

This kitchen, the woman's workshop, demonstrates how modern industry contributes to easing the burdens of housework through efficient planning and equipment. Everything is arranged so that there need be no wasted steps. Modern design not only makes for efficiency here but for beauty as well.

The walls and floors are of marbled linoleum—good to look at and easy to keep clean. The ceiling is painted light cream. The monel metal sink extends the whole length of the west wall, and serves a double purpose, by providing storage space in the form of white steel drawers and cabinets along its



THE KITCHEN IS A MARVEL OF CONVENIENCE AND CLEANLINESS

entire length. In addition to these cabinets there is a large kitchen cabinet and two built-in steel cabinets for storing foods. There is a modern kitchen

table made of monel metal and white trim. Naturally, this kitchen contains the newest type mechanical refrigerator and a large cook stove of the latest model. A hood of monel metal and a blower are placed above the stove to draw off heat and cooking odors.

A large window in the center of the kitchen is framed in charming blue plaid curtains.

All modern kitchen utensils and devices are in-

FURNISHINGS AND EQUIPMENT

- | | |
|---|--|
| 1 Double monel metal sink and white metal drawers | Complete sets of cooking utensils in aluminum and enamel |
| 1 Monel metal table | Cooking glassware |
| 1 Refrigerator | Silver flat ware |
| 1 Kitchen cabinet | Electric mixing machine |
| 1 Stove | Cleansing powders, flypaper, wax paper |
| 1 Hood over stove | 2 Ceiling lights |
| 1 Stool | 1 Set of blue plaid curtains |
| All kinds of packaged foods, preserves and canned goods | 3 Steel wall cabinets with glass doors |

See page 35 for list of exhibiting manufacturers

stalled and arranged for greatest convenience. Two silver and frosted glass lighting fixtures provide light on dark days, and in the evening. A large L-shaped food storage pantry with an outside window opens off the kitchen. It is equipped with a great number of shelves to hold the winter's supply of preserves and packaged goods.



A CORNER OF THE KITCHEN

LAUNDRY

11' x 8'

ANOTHER innovation and improvement in farm housing is a separate laundry room taking the hustle and bustle of washing and ironing out of the kitchen and providing a separate room for this necessary function.

With the inclusion of the latest type laundry equipment, much of the drudgery has been removed from washday, and modern appliances do the work quickly and efficiently.

The walls, floors and ceiling are exactly like those in the kitchen—of linoleum, washable and easy to keep clean. An open doorway connects the laundry with the kitchen, and the back door of the Model Farm House opens from the laundry. The laundry when not in use as such makes a fine receiving room for farm and store supplies.

The laundry is equipped with a double washtub, the latest washing and ironing machines, hot water heater, lighting fixtures and a sufficient amount of electrical outlets. There is a large closet in this room where heavy ware may be stored.

ACCESSORIES AND EQUIPMENT

- 1 Double laundry tub
- 1 Electric ironer
- 1 Electric washer
- 1 Hot water heater
- 1 Small oil stove
- Laundry and soap cleansers and other packaged products

See page 37 for list of exhibiting manufacturers



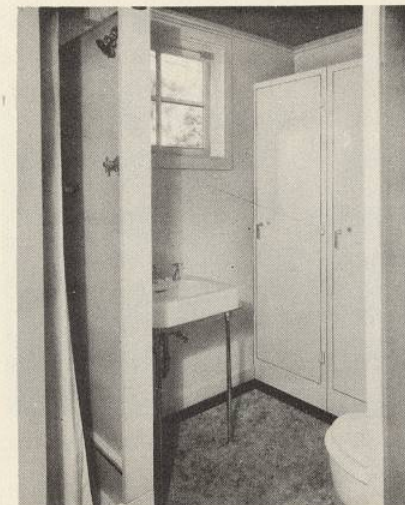
THE LAUNDRY, LOOKING TOWARD THE KITCHEN

CLEAN-UP ROOM

THIS ROOM is a splendid idea for any farm house. Therefore you would naturally expect to find it in The Country Home Model Farm House. The men of the house coming in from their work are hot, tired and grimy. They can go from the back door into this room, remove their soiled clothing, wash up or take an inviting shower and change into fresh clothes. The room is positively refreshing, finished all in white with a new type of imitation tile wall, which remains white and is easily cleaned.

The floor is of linoleum. There is a white steel shower, white lavatory and toilet, and a row of white steel lockers where the farm workers may keep a change of clothes. A window admits air and light.

Now the men of the house have no excuse to go to the dining table before freshening up. Farm people who have seen this room at A Century of Progress are tremendously enthusiastic about it and say it is ideal on two counts: (1) it gives the men a place of their own to wash up; (2) it keeps the house from being "tracked up" and soiled.



THE CLEAN-UP ROOM, REFRESHING AND NOVEL

ACCESSORIES AND EQUIPMENT

- | | |
|------------------|--|
| 1 Shower cabinet | 1 Washstand |
| 1 Shower curtain | 3 Steel lockers, painted white |
| 1 Shower | Clothes, work shoes, boots, soap, towels, etc. |
| 1 Toilet | |

See page 37 for list of exhibiting manufacturers

FARM OFFICE

JUST AS the Model Farm House kitchen incorporates new ideas helpful to the woman of the house, here is a room which will be a delight to the man. Fin-



THE FARM OFFICE ADDS ANOTHER TOUCH OF USEFULNESS AND COMFORT

ished in rich brown, the walls appear to be expensively panelled in wood, but they are not. They are of a new type linoleum which looks exactly like pine.

On the wall there is a large airview photographic map of the farm. A slant-top desk of appropriate design offers a place for business and correspondence. There are two red leather chairs and a masculine looking desk lamp in harmony with the rest of the room. A gun rack and a cabinet for ammunition and other articles are built into the walls. There is also a large book cabinet providing space for books of reference and others.

The room has an outside window. Floor is covered with brown linoleum. All the surfaces in the room can be quickly cleaned.

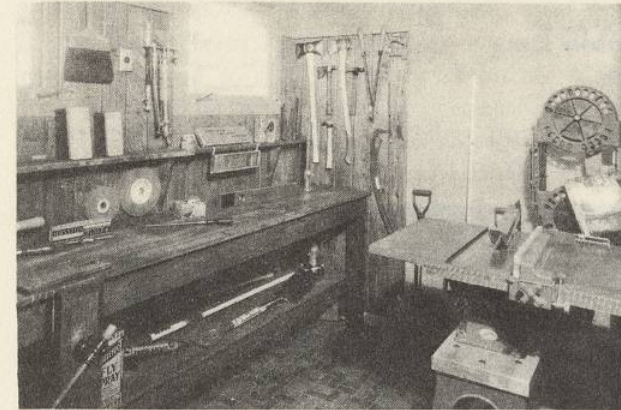
FURNISHINGS AND EQUIPMENT

- | | |
|-----------------------|---------------------|
| 1 Desk | 1 Telephone |
| 2 Red leather chairs | 1 Lamp |
| Complete set of books | Guns and ammunition |
| 1 Map | 2 Built-in cabinets |

See page 38 for list of exhibiting manufacturers

THE WORKSHOP

10' 7" x 7' 6"



THIS HANDY WORKSHOP PUTS AN END TO ALL TINKERING IN THE LIVING ROOM

THE WORKSHOP of The Country Home Model Farm House is really a livable room. There are two windows, the walls of insulated wallboard are pleasing to the eye, and the floor covering is a red inlaid linoleum of brick design. There is a large work bench along the side of the wall under the windows.

In these pleasant surroundings are assembled all the tools and equipment that an up-to-date farmer needs—electric lathes, combination motor units, paints, spray guns, farm tools, saws, grinding machines, lawn mowers, cutting tools and the like.

An efficient arrangement has been designed to keep all the tools in their proper place and still have them easily accessible.

If a motor balks, the farmer need not litter up the dining room table with carburetor parts or go out to the barn to do his repair work. Under the same roof, the farmer may repair or tinker with farm machinery, but still be away from the actual living quarters of his home.

ACCESSORIES AND EQUIPMENT

- | | |
|-------------------------------|--------------------|
| 1 Large work bench | Lathes |
| 2 Ceiling lights | Electric tools |
| An unlimited variety of tools | Garden tools, etc. |

See page 38 for list of exhibiting manufacturers

THE GARAGE

17' x 15'

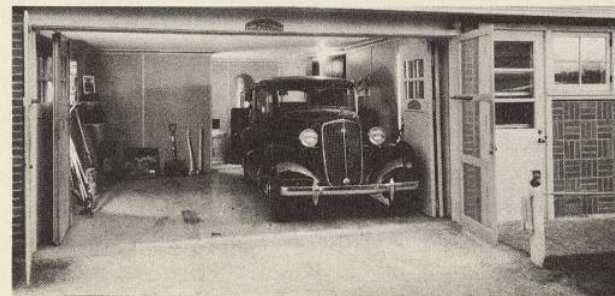
ONE STEP away from the workshop and opening directly from it is the garage. It is large with enough space to hold car and farm truck, supplies of gas and oil, as well as the variety of other things that always accumulate in the garage. It is completely insulated with wallboard and fireproof like the rest of the house.

The convenience and desirability of having the garage within the house itself is obvious. Modern town and suburban homes have demonstrated the advantages of this construction. It saves time and unnecessary steps and in bad weather it is especially handy.

There are two windows and the doors, extending the whole front of the garage, also contain windows. Thus there is plenty of light and it is not necessary to burn electricity during the daytime. The garage doors are of an improved type which open easily and close securely.

Very few automobiles could have a better home than the car which stands in this garage, not to men-

tion the convenience of this arrangement to the farm family.



THE GARAGE AND HOUSE ARE UNDER THE SAME ROOF,
A GREAT CONVENIENCE

ACCESSORIES AND EQUIPMENT

1 Automobile	Lubricants
1 Truck	Gasoline
Tire Chains	Battery
Automobile tools	Fire Extinguisher

See page 39 for list of exhibiting manufacturers

MILK ROOM

TODAY most farm families devote a good deal of their attention to milk, cream and butter. Consequently the milk room was given serious consideration by the architects and the builders in designing The Country Home Model Farm House.

ACCESSORIES AND EQUIPMENT

Automatic milkers
Electric cooling machine
Electric separators
Wash sink
Chemical bottle rack
Tester
Electric screen door and window screen
Outside electric fly lantern
Concrete floor
1 Ceiling lighting fixture
Milk can rack

See page 39 for list of
exhibiting manufacturers

The magic of electricity which functions throughout the house is most noticeable in the milk room. Automatic milkers and separators are run by electricity, as is the large milk cooler.

This room has an outside door, so that the fresh milk may be brought direct to the room without passing through any other part of the house. In addition to conventional screens on door and window, there is a new device which keeps the room free from flies and insects. It is an "electric screen" which actually electrocutes flies and insects on contact. Outside the door is an electric flytrap lantern which also kills insects and bugs attracted by its light.

The walls of the milk room are of a gleaming white substance which looks like expensive porcelain tile but is in reality a synthetic product. The walls can be washed clean in a jiffy.

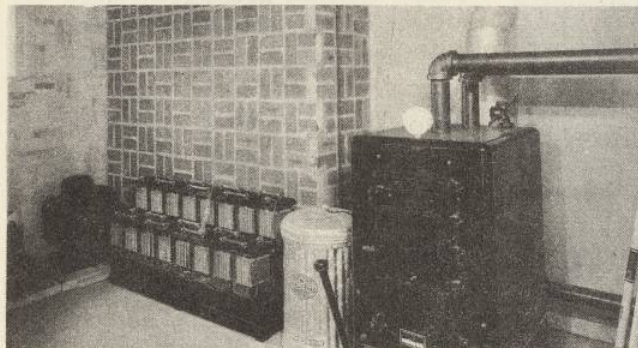


CONVENIENCE, CLEANLINESS AND EFFICIENCY
DOMINATE THE MILK ROOM

HEATER ROOM

THE HEATER ROOM is partitioned off from the garage and contains the central heating unit which is connected with the heat outlets throughout the house, also the lighting plant and water system.

A fuel room with an outside window adjoins it.



THE HEATER ROOM CONTAINS THE CENTRAL HEATING UNIT,
LIGHTING PLANT AND WATER SYSTEM

ACCESSORIES AND EQUIPMENT

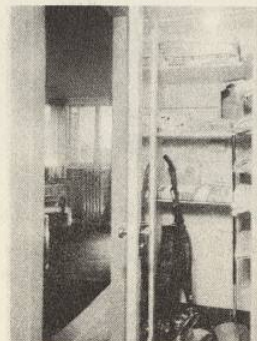
Central heating unit Receptacles for ashes Furnace tools

See page 40 for list of exhibiting manufacturers

SECOND FLOOR HALL

THE second floor hall is reached by a carpeted steel stairway from the downstairs hall. The floor is covered with brown linoleum bisected with orange strips. The hallway and stair walls are of mottled tan linoleum, and the ceiling is painted white. A red and glass early American lighting fixture illuminates the hall.

The large linen closet, opens from this hall. In the linen closet, there are carpet sweepers, vacuum cleaner, and complete stocks of towels, pillow cases, sheets, and other linens. Here also are placed waxes and other cleaning and polishing equipment.



THE LINEN CLOSET OPENING
FROM THE SECOND FLOOR HALL

See pages 40 and 42 for list of exhibiting manufacturers

THE MASTER'S BEDROOM

14' x 10' 4"

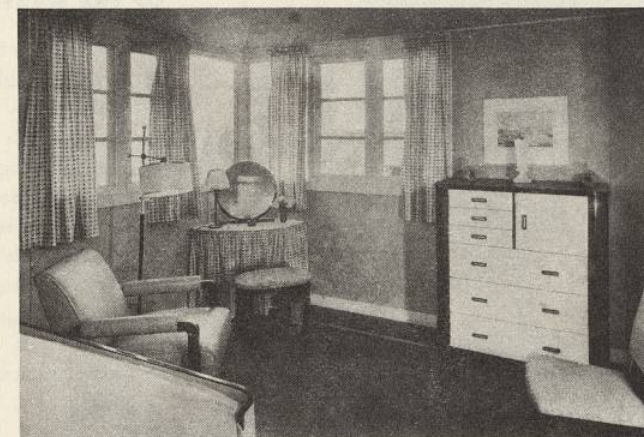
THE MASTER'S BEDROOM has a large double window built around the corner of the room admitting a flood of sunshine. The floor is of brown linoleum with a narrow orange band in contrast. The rug is taupe with small varicolored stripes, placed over rug cushion. The walls and ceiling are of natural unfinished wall board. A thin band of cream-yellow trim surrounds the room at the meeting of ceiling and wall. The baseboard is painted the same color, as is the window trim and the door opening into a spacious closet.

The main furniture, consisting of a double bed, bureau, two bed

tables, is of metal and the color scheme is yellow with black trim. There is also a straight backed metal chair, the seat and back covered with a tweedy black and yellow material. A small bench belonging

to the dressing table ensemble is of the same design and covering. The dressing table fits snugly into the corner of the room under the windows. The gingham flounce of the dressing table carries a chocolate, yellow and green check design. The curtains and the bolster of the bed are of the same material. The bed is covered in cream-yellow corded pique.

A circular mirror



CORNER WINDOWS ADMIT LOTS OF SUNSHINE AND AIR
TO THE MASTER'S BEDROOM.

with a black metal frame stands on the dressing table. An easy chair covered with yellow artificial leather and a sturdy brown and white reading lamp are an important unit in the room. There are charming glassware decorative touches, and two glass jars holding rust colored flowers, stand on the bed tables



MODERN COMFORT STRIKES THE KEYNOTE.

at each side of the head of the bed. There is a mirrored lamp with an attractive plaited shade, and a small glass vase holding yellow tea roses on the dressing table.

FURNISHINGS AND EQUIPMENT OF THE MASTER'S BEDROOM

- 1 Metal double bed
- 2 Metal bed tables
- 1 Metal bureau
- 1 Dressing table
- 1 Metal dressing table bench
- 1 Straight backed metal chair
- 1 Leather covered easy chair
- 1 Dressing table lamp
- 1 Round dressing table mirror
- 1 Standing lamp
- 3 Flower vases
- 2 Early American glass decorations
- 1 Rug
- 1 Rug cushion
- 3 Bird pictures

See page 40 for list of exhibiting manufacturers

GIRL'S ROOM

11' x 12'

THE CHARMING and cheerful girl's room opens from the head of the stairs. The floor is of two-toned linoleum in brown and grey, and around the edge is a scalloped design border. The wallpaper is pink plaid, having overtones of other pastel colors. The ceiling is painted white, and there is a large window in the corner which extends around two sides.

The grey metal bed has a white and rose candlewick bed spread. The chiffonier is also of grey metal with black accents. A grey metal straight-backed chair has a white upholstered seat and back. This material is of a patent gros-

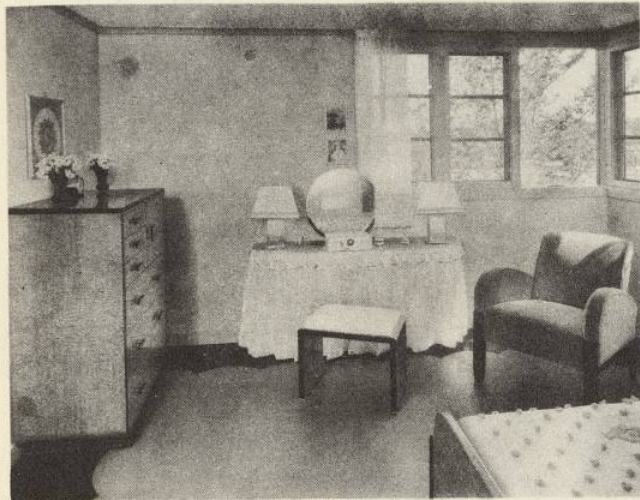
grain fabric, washable and easy to keep clean. The bench at the dressing table is also of grey metal with the same white covering. The dressing table is pink with white organdy flounces, under which is pink crepe. The shell tone showing through the white makes a very beautiful effect.

There is a circular mirror on the dressing table and two tall square lamps of silver. These lamps have square white parchment shades with silver trim. The two curtains on the large window are made of white organdy matching the dressing table. There is a rose beige easy chair



THE GIRL'S ROOM IS DAINTY, FEMININE AND CHEERFUL

of velour. By the bed is a modern table painted the fashionable flat white. On this table stands an alabaster lamp with a white parchment and silver shade. On the dresser are two red glass flower vases and an electric clock. There is a milk glass vase containing flowers on the bed table.



ANOTHER VIEW OF THE GIRL'S ROOM

On the wall over the bed is an applied flower picture with a silver frame. A similar picture stands over the bureau, and there are two charming water colors of fashion figures over the dressing table. On the floor is a rose moss-grained rug with rug cushion underneath and a fur rug adds a touch of luxury to this room.

FURNISHINGS AND EQUIPMENT OF THE GIRL'S ROOM

Wallpaper	2 Glass flower vases
Painted ceiling	1 Electric clock
1 Metal bed	1 Velour easy chair
1 Metal chiffonier	1 White table
1 Dressing table	1 White alabaster lamp with shade
1 Metal dressing table bench	1 Milk glass vase with flowers
1 Dressing table mirror	4 Pictures with silver frames
2 Dressing table lamps	1 White fur rug
White makeup box	1 Rose moss-grained rug
Milk glass hairpin holders	1 Rug cushion
Porcelain perfume bottle and powder box	

See page 41 for list of exhibiting manufacturers

THE GUEST ROOM

11' 8" x 14' 3"

THE GUEST ROOM is a large square room brilliantly lighted by a large window which extends around the corner, and a door which opens on the sundeck porch. The floor is covered with brown linoleum with widely spaced white dots as a border design. The walls are of composition board painted a cool light green and are washable. The trim and closet door are painted a shade darker green. There is a rug of hooked design in pastel colors on the floor. The curtains on the windows are of white linen with coral borders, matching the spreads on the twin beds.



SPACIOUSNESS AND CHARM CHARACTERIZE THE GUEST ROOM

There are twin beds in this room, and their design is most interesting. The bedspreads are of coral on the top with white flounces all around, the material being a heavy linen. The headboards of the beds are square panels papered with squares of beautiful floral-print washable wallpaper. They are not actually part of the beds, but are fastened to the wall, the beds being placed against them, the ensemble giving a very pleasing and unusual effect.

The furniture in this room is of polished maple, consisting of a chest of drawers, a bureau and a bed table

standing between the twin beds. On this bed table is a charming lamp of oxidized pewter, and a parchment lamp shade, antiqued, with a thin red band at top and bottom. Two large white medallions are hung on the wall over the headboards. On the bureau stands an electric clock framed in maple, and over this is a large mirror with a carved maple frame. On either side of this mirror are china flower



SHOWING THE NOVEL AND ATTRACTIVE HEADBOARDS OF THE BEDS

holders hanging from the wall. A sewing machine in a cabinet, which when closed looks like a fine piece of furniture, stands in the corner by the window.

There is a large closet in this room, with plenty of space. A reed chair stands in the corner next to the window and has upholstered seat and back pads. On the chest of drawers stands a tall milk glass vase and a lamp. There are flower prints on the walls, a lighting fixture, and two modern green glass ornaments.

FURNISHINGS AND EQUIPMENT OF THE GUEST ROOM

- | | |
|-----------------------------|-------------------------------------|
| Twin beds | 1 Electric clock in maple case |
| 2 Flower-papered headboards | 2 Hanging flower vases |
| 1 Chest of drawers | 1 Milk glass vase |
| 1 Bureau | 1 Bed table |
| 1 Wicker chair | 1 Bed table lamp |
| 1 Sewing machine | 1 Rug |
| 1 Maple framed mirror | Composition board walls and ceiling |

See page 41 for list of exhibiting manufacturers

BOY'S ROOM

11' x 8'

THIS ROOM has been designed in the likeness of a ship's cabin to serve a double purpose. First, every boy is intensely interested in anything that has a nautical atmosphere; and, second, boys know that due to limited space sailors have to pack and stow their belongings carefully. Therefore, this room is designed to interest the youngster of the house and to teach him neatness.

The floor is of blue linoleum inlaid with white stripes and a huge white anchor. The walls are done in cream washable paper, and the ceiling has blue wallpaper with gold stars to simulate the sky. Around the walls where they join the ceil-



THE BOY'S ROOM SUGGESTS A SHIP'S CABIN

ing, there is a white rope molding carved in wood. The bed is like a ship's bunk covered with serviceable blue denim with white rope trim. There are no springs in the bed, the mattress being of special design which makes springs unnecessary. Below the bed are shelves and closets to hold clothes, toys and other boyish possessions.

The furniture is of maple and consists of a chest of drawers, a desk, a low book case and an early American design chair. There is a large closet in this room, the door of which is painted blue. Besides the other furniture, there is a maple bench covered with

denim in blue to match the bed. Large windows go around the corner of the room. The window curtains are red and white candy striped and made of a pique-like cloth.

On the desk stands a fountain pen set and a modern design desk lamp, made of spun aluminum, a



EVERYTHING TO DELIGHT A BOY—AND PLENTY OF STORAGE SPACE FOR BOYISH TREASURES UNDER THE COMFORTABLE BUNK

revolving globe of the world, books and magazines.

On the chest of drawers stand two unique non-tippable brass oil lamps. These lamps are of authentic ship design and there is a gaily colored red, blue and white wood lamp and parchment shade which stands on the book case next to the bunk-like bed. There is a mirror on the wall with a plain maple frame. Five marine pictures lend nautical interest.

FURNISHINGS AND EQUIPMENT OF THE BOY'S ROOM

- | | |
|-------------------------------------|----------------------------------|
| 1 Bunk red with blue denim covering | 1 Aluminum lamp |
| 1 Maple bookcase | 1 Fountain pen set |
| 1 Wood lamp with parchment shade | 2 Oil lamps |
| 1 Mirror with maple frame | 5 Nautical paintings |
| 1 Maple desk | National encyclopaedia |
| 1 Maple chair | Blue and white linoleum on floor |
| 1 Maple bench | 1 Globe |
| 1 Maple footstool | Gold starred blue ceiling paper |
| Red and white curtains | Cream wallpaper |
| | 1 Radio |

See page 42 for list of exhibiting manufacturers



THE BATHROOM
FOLLOWS THE MOST
MODERN IDEAS IN
DECORATION AND
EQUIPMENT

ACCESSORIES AND EQUIPMENT

- | | |
|--------------------------------------|--|
| 1 Bathtub | 2 Lighting fixtures |
| 1 Shower | Red rubberized window and shower curtain |
| 1 Lavatory | Imitation tile walls |
| 1 Toilet | Wallpaper |
| Built-in medicine cabinet and mirror | Drug products |
| Window | |

See page 42 for list of exhibiting manufacturers

BATHROOM

FOLLOWING modern ideas in decoration, the bathroom has both color and character and is not just a dead white cheerless room. The floor is of serviceable, imitation tile in grey and black checks. The walls of the bathroom are made of green imitation tile extending halfway to the ceiling and three quarters of the way to the ceiling where the shower and tub are located. This synthetic tile has a black border separating it from gaily colored wallpaper in a white, red and green floral design which completes the wall decoration to the white painted ceiling.

A large mirror, part of the medicine cabinet, stands over the wash-stand, and may be adjusted to various angles. Over the lavatory and medicine cabinet is a window which has two modern silver and frosted glass lighting fixtures at each end of the frame. On the window are two gay red rubberized curtains. The shower curtain is made of the same material.

As seen by the World's Fair visitors, the room is complete with equipment, drugs, soap, and other products which logically belong in the bathroom.

SUNDECK

23' x 25'

THE SUNDECK immediately above the garage is one of the newest ideas in modern rural building. This huge outdoor room will be the center of most of the family's relaxation time in the warm months. A huge awning extends the width of the porch and half its length.



THE SPACIOUS, AWNING-COVERED, SECOND FLOOR SUNDECK IS AN IDEAL PLACE TO RELAX

The floor is of smooth surfaced green asphalt roofing. A large reed rug covers half the floor surface. There is a railing which extends all the way around the porch and this is painted in cream.

Penthouse furniture decorates this outdoor room. There is a large black metal glider with gaily colored cushions and a black outdoor chaise lounge which matches. There is one black table of indestructible material, and modern in design. There is a white table of the same finish and two white chairs covered with black and green cretonne.

FURNISHINGS AND EQUIPMENT

- | | |
|--|-----------------------|
| Railing all around porch painted cream | 1 White table |
| Awning of two shades of green | 1 Black chaise lounge |
| 1 Glider | 1 Black chair |
| 2 Black tables | 2 White chairs |

See page 43 for list of exhibiting manufacturers

THE GARDEN AND GROUNDS

A MODEL FARM HOUSE would be unimportant with an ordinary garden. The Country Home Model Farm House garden is "a thing of joy forever" and makes the most of the entire plot at the Fair which measures 100' long by 73' 6" deep.

A patio walk of smooth brick surrounds the front portion of the house. In front of the dining-living room, and in full view of one who stands on the sundeck porch, is a square, neatly patterned flower bed, cut through fine grass in a mathematical design. To the right of this

stands the gem of the garden, a large pool, complete with gold fish and water lilies. This pool is fed with running water which trickles over a rock

garden built in the corner of the lot. Near this charming cool spot is a gaily painted table with a large sun umbrella and chairs. Here the family may have lunch or tea in warm weather.

Trees and shrubs abound, and at the right-rear of the lot, next to the kitchen door stands a high rustic wood fence. In front of this is a semi-circular flagstone terrace with hickory rustic furniture around a large tree.



THE GARDEN WITH ITS SHRUBBERY, TREES AND ROCK POOL IS A CHARMING SETTING FOR THE HOUSE



VIEW OF THE HOUSE FROM THE ROCK GARDEN AND POOL

ACCESSORIES AND EQUIPMENT OF THE GARDEN AND GROUNDS

•

- Rock garden and pool
- Flowers, shrubs and trees
- Rustic fence
- Rustic furniture
- Steel wire fence
- Garden table, chairs and umbrella
- Outdoor furniture
- Lawn mower and garden implements
- Sprinkler and garden hose
- Flagstone patio
- Brick walk

See page 43 for list of cooperating nurserymen

EXHIBITING MANUFACTURERS

The Country Home Model Farm House

•

To secure detailed information in regard to any of the products mentioned in the following pages, use the enclosed return postcard which lists the types of materials and products that have gone into the construction, equipment and furnishing of The Country Home Model Farm House. Check on the postcard the items in which you are particularly interested, sign your name and address and mail the card. It requires no postage.

STRUCTURAL

ARCHITECTS AND ENGINEERS—*Holsman & Holsman, Chicago, Illinois*
 FACE BRICK—*Chicago Face Brick Association, Chicago, Illinois, under the direction of the Chicago Face Brick Bureau*
 The making of reinforced brick slabs sponsored by Indiana-Illinois Face Brick Mfrs.—*Division American Face Brick Association*
 Rail Steel Reinforcing Bars—*Calumet Steel Company, Chicago, Illinois*
 Consulting Engineers—*Hugo Phillipi, Chicago, Illinois*
 ROOFING—Timbertex Dutch Lap Asbestos Shingles and Ruberoid Evergreen Roofing—*The Ruberoid Company, New York, N. Y.*
 I PAN FLOOR AND ROOF CONSTRUCTION—*Harvey W. Schick, Inc., Chicago, Illinois*
 SMOOTH SHEET STEEL USED IN I PAN CONSTRUCTION—*Inland Steel Company, Chicago, Illinois*
 SAYLITE-FILL IN I PAN CONSTRUCTION—*Material Service Corporation, Chicago, Illinois*
 STICKUM STRUCTURAL MASTIC CEMENT (used in Wallboard Construction)—*Paint Products Laboratories, Chicago, Illinois*
 STEEL DOOR TRIM, WINDOW TRIM AND BASE—*Knapp Bros. Mfg. Company, Chicago, Illinois*
 WINDOW GLASS—*Libbey-Owens-Ford Glass Company, Toledo, Ohio*
 "THERMOPANE" METHOD OF INSULATING GLASS—*Chas. D. Haven, Milwaukee, Wisconsin; J. Flint Foster, Chicago, Illinois*

TONCAN IRON SHEET METAL CORNICES—*Republic Steel Corporation, Youngstown, Ohio*
 "WIN-DOR" CASEMENT ADJUSTERS AND WINDOW CLEANING HINGES—*Casement Hardware Co., Chicago, Illinois*
 THERMAX ROOF INSULATING—*Thermax Corporation, Pittsburgh, Pennsylvania*
 HARDWARE—*National Brass Company, Grand Rapids, Michigan*
 EXTERIOR HOUSE PAINT—*Sherwin-Williams Company, Cleveland, Ohio*
 WEATHERSTRIPPING—*Monarch Metal Weatherstrip Company, St. Louis, Missouri*
 LIGHTNING RODS—*National Lightning Protection Company, St. Louis, Missouri*
 ALL BRONZE SCREENING—*New York Wire Cloth Company, New York, N. Y.*
 ALL ELECTRIC LIGHT BULBS, MAZDA LAMPS—*General Electric Company, Cleveland, Ohio*

COMBINATION LIVING-DINING ROOM

MASONITE CUSHIONED FLOORING—*Masonite Corporation, Chicago, Illinois*
 WALLS—Nuwood—*Wood Conversion Company, St. Paul, Minnesota*
 PAINT—"Flat-Tone"—*Sherwin-Williams Co., Cleveland, Ohio*
 WALL FIXTURES AND LAMPS—*Chase Brass & Copper Co., Waterbury, Connecticut*
 FURNITURE—*Kittinger Company, Buffalo, New York*
 OCCASIONAL TABLE—*Mersman Bros. Corp., Celina, Ohio*
 KIRSCH DRAPERY HARDWARE—*Kirsch Company, Sturgis, Michigan*

OLSON RUG—*Olson Rug Company, Chicago, Illinois*
 OZITE RUG CUSHION—*Clinton Carpet Company, Chicago, Illinois*
 WARREN TELECHRON CLOCK—*Warren Telechron Co., Ashland, Massachusetts*
 HEATILATOR—*Heatilator Company, Syracuse, New York*
 WESTINGHOUSE AIR CIRCULATING HEATER—*Westinghouse Electric & Manufacturing Co., Mansfield, Ohio*
 SILVERWARE—*King Cedric Community Plate, Oneida Community Ltd., Oneida, New York*
 CURTAINS AND FABRICS—*Schumacher-Waverly, Schumacher & Company, New York, New York*
 UPHOLSTERY FABRICS—*Shelton Looms, New York, New York*
 WESTCLOX CLOCK—*Western Clock Company, La Salle, Illinois*
 BOOKS—*P. F. Collier & Sons, New York, New York*
 ALADDIN FLOOR LAMP AND SHADE—*Mantel Lamp Co., Chicago, Illinois*
 RADIOS—*R. C. A. Victor—R. C. A. Victor Company, Camden, New Jersey; L. Tatro 6 Volt Radio—L. Tatro Products Corp., Decorah, Iowa; Crosley Radio—Crosley Radio Corp., Cincinnati, Ohio*

KITCHEN

WALL COVERING—Armstrong "Linowall"—*Armstrong Cork Company, Lancaster, Pennsylvania*
 WALLHIDE PAINT—CEILING AND TRIM—*Pittsburgh Plate Glass Co., Milwaukee, Wisconsin*
 WALL BOARD—"Quarter Board"—*Masonite Corporation, Chicago, Illinois*
 FLOOR—Armstrong Linoleum—*Armstrong Cork Company, Lancaster, Pennsylvania*

BUILT-IN STEEL CABINETS—*Dieterich Steel Cabinet Company, Chicago, Illinois*
 KITCHEN CABINETS—Hoosier-Aid Cabinet—*Hoosier Mfg. Co., Newcastle, Indiana; Sellers Space-Saver Kitchen Cabinet—G. I. Sellers & Sons Co., Elwood, Indiana*
 LIGHTING FIXTURES—*Chase Brass & Copper Company, Waterbury, Connecticut*
 MONEL METAL SINK—*International Nickel Company, Chicago, Illinois*
 SMARTLINE TABLE—*International Nickel Company, Chicago, Illinois*
 CRUMB CUP SINK STRAINER—*International Nickel Company, Chicago, Illinois*
 VENTILATING HOOD AND BLOWER OVER STOVE—*Universal Blower Company, Birmingham, Michigan*
 STOVES—Coleman Instant Gas DeLuxe Low Oven Range—*Coleman Lamp & Stove Co., Wichita, Kansas; Perfection Heat-or-Cook High-Power Oil Burning Range—Perfection Stove Co., Cleveland, Ohio; Florence White Wickless Oil Range—Florence Stove Co., Gardner, Massachusetts—Kalamazoo Stove—Kalamazoo Stove Company, Kalamazoo, Michigan; Majestic Stove—Majestic Stove Company, St. Louis, Mo.*
 MECHANICAL REFRIGERATORS—*G. E. Refrigerator—General Electric Company, Cleveland, Ohio; Norge Rollator—Norge Corporation, Detroit, Michigan; Superflex Oil Burning Refrigerator—Perfection Stove Company, Cleveland, Ohio*
 COOKING UTENSILS—"Nesco" Enamel Kitchenware—*Nat'l Enameling & Stamping Co., Milwaukee, Wisconsin; White-ware and Dovetone Cooking Utensils—Republic Stamping & Enameling Co., Canton, Ohio; Federal Enameling & Stamping Company, Pittsburgh, Pennsylvania; The Aluminum*

Kitchen—continued

Cooking Utensil Company, New Kensington, Pennsylvania;
Perfection Broiler—Perfection Stove Co., Cleveland, Ohio;
Perfection Wick with Red Triangle—Perfection Stove Co., Cleveland, Ohio
MIXMASTER—Chicago Flexible Shaft Company, Chicago, Illinois
ELECTRIC IRONS—General Electric Company, Bridgeport, Connecticut
ELECTRIC FANS—General Electric Company, Bridgeport, Connecticut
ELECTRIC TOASTER—General Electric Company, Bridgeport, Connecticut
ELECTRIC PERCOLATOR—General Electric Company, Bridgeport, Connecticut
ELECTRIC TOASTER—Robeson-Rochester Corp., Rochester, New York
WESTINGHOUSE MODERN HOME AND OFFICE DEBONAIRE FAN—Westinghouse Electric & Mfg. Co., Mansfield, Ohio
WESTINGHOUSE VACUUM COFFEE MAKER—Westinghouse Electric & Mfg. Co., Mansfield, Ohio
WESTINGHOUSE CHROME PLATE AUTOMATIC WAFFLE IRON—Westinghouse Electric & Mfg. Co., Mansfield, Ohio
WESTINGHOUSE NEW TURN OVER TOASTER, CHROME PLATED—Westinghouse Electric & Mfg. Co., Mansfield, Ohio
MAJESTIC UNDERGROUND GARBAGE RECEIVER—Majestic Company, Huntington, Indiana
KNIFE SHARPENER—Carborundum Company, Niagara Falls, New York
UNIFORM NUT MEAT CHOPPER—Metwood Mfg. Company, Rockford, Illinois

RICE-IT—Columbian Enamelling & Stamping Co., Inc., Terre Haute, Indiana
PYREX COOKING GLASS—Corning Glass Works, Corning, N. Y.
PRESS-IT KITCHEN CAN—Wheeling Corrugating Company, Wheeling, West Virginia
NATIONAL PRESSURE COOKER—Natl. Pressure Cooker Company, Eau Claire, Wisconsin
SPEEDO CAN OPENER—Speedo Can Opening Machine Co., St. Louis, Missouri
RUBBER COVERED SINK DISHRACK—B. F. Goodrich Company, Akron, Ohio
KITCHEN CLOCK—Westclox—Western Clock Company, LaSalle, Illinois
SUPER FYR FYTER EXTINGUISHER—Fyr Fyter Company, Dayton, Ohio
TANGLEFOOT FLYPAPER—The Tanglefoot Company, Grand Rapids, Michigan
PRESERVES—Kerr Fruit Jars and Caps—Kerr Glass Company, Sand Springs, Oklahoma; Ball Jars, Caps and Rubbers—Ball Brothers, Muncie, Indiana
PAPER KITCHEN ACCESSORIES—Dennison Mfg. Co., Framingham, Massachusetts
SUPPLIES—
Spices—Furst, McNess Company
Quaker Oats
Kellogg's Corn Flakes
Pillsbury Flour
Figaro Smoked Salt
Old Dutch Cleanser
Yeast Foam Tablets
Magic Yeast
Tanglefoot—Fly Paper and Ribbons
Certo
Karo Syrup
Postum
Bon Ami
Boston Woven Hose Jar Rings
U. S. Rubber Jar Rings
Jenkins Blue Target Jar Rings

Minute Tapioca
Grape-Nuts Flakes
Calumet Baking Powder
Crescent Mapleine
Monarch Coffee
Monarch Canned Goods
Shredded Wheat
National Biscuits
K.V.P. Cookery Parchment and Waxed Paper

LAUNDRY

WALLS AND FLOORS—Armstrong Linoleum and Linowall—Armstrong Cork Co., Lancaster, Pennsylvania
WALL BOARD—"Quarterboard"—Masonite Corporation, Chicago, Illinois
WALLHIDE PAINT—Pittsburgh Plate Glass Co., Milwaukee, Wisconsin
LIGHTING FIXTURES—Chase Brass & Copper Co., Waterbury, Connecticut
DOUBLE PORCELAIN LAUNDRY SINK—Kohler of Kohler, Kohler, Wisconsin
WESTINGHOUSE MASTER MATIC IRON—Westinghouse Electric & Mfg. Co., Mansfield, Ohio
WESTINGHOUSE STANDARD ADJUST-O-MATIC IRON—Westinghouse Electric & Mfg. Co., Mansfield, Ohio
WASHING MACHINES AND IRONERS—A. B. C. DeLuxe Washer and Ironer—Altorfer Bros. Co., Peoria, Ill.; Speed Queen Washer and Simplex Ironer—Barlow & Seelig Mfg. Co., Ripon, Wisconsin; Maytag Washer and Ironer—Maytag Co., Newton, Iowa; Thor "Electric Servant" Washer and Ironer—Hurley Machine Co., Chicago, Ill.; Horton Washer and Ironer—Horton Mfg. Co., Fort Wayne, Indiana
BRIGGS & STRATTON GASOLINE MOTOR—Briggs & Stratton Company, Milwaukee, Wisconsin
HOT WATER HEATERS—Coleman Lamp & Stove Co., Wichita,

Kansas; Perfection Stove Co., Cleveland, Ohio; Florence Stove Co., Gardner, Massachusetts
LAUNDRY STOVES—Perfection High-Power Junior Stove—Perfection Stove Co., Cleveland, Ohio; Coleman Lamp & Stove Co., Wichita, Kansas
HIGHBOY LAUNDRY BASKET—Wheeling Corrugating Co., Wheeling, West Virginia
ELASTIC STARCH
RINSO
P & G NAPTHA SOAP

CLEAN-UP ROOM

WALLS—"Temptrile"—Masonite Corporation, Chicago, Illinois
FLOOR—Armstrong Linoleum—Armstrong Cork Company, Lancaster, Pa.
PAINT—"Semi Lustre"—Sherwin-Williams Company, Cleveland, Ohio
LIGHTING FIXTURES—Chase Brass & Copper Company, Waterbury, Connecticut
"AMBASSADOR" SHOWER CABINET, CURTAINS AND SHOWER—Elkay Mfg. Company, Chicago, Illinois
TOILET AND LAVATORY—Kohler of Kohler, Kohler, Wisconsin
WHITE STEEL LOCKERS—Dieterich Steel Cabinet Corp., Chicago, Illinois
BALL BAND BOOTS—Mishawaka Rubber & Woolen Company, Mishawaka, Indiana
LEE OVERALLS—H. D. Lee Merchantile Company, Kansas City, Missouri
WOLVERINE SHELL HORSEHIDE WORK SHOES—Wolverine Shoe & Tanning Corp., Rockford, Michigan
JACKET—Browns Beach Jacket Co., Worcester, Massachusetts

Clean-Up Room—continued

LAVA SOAP—Procter & Gamble, Cincinnati, Ohio
BIXBY SHOE POLISH—Gold Dust Corp., New York, New York

FARM OFFICE

WALLS—Armstrong Linowall—Armstrong Cork Company, Lancaster, Pennsylvania
PAINT—"Flat-Tone" on Ceiling—Sherwin-Williams Co., Cleveland, Ohio
FLOORING—Armstrong Linoleum—Armstrong Cork Company, Lancaster, Pennsylvania
FURNITURE—Kittinger Company, Buffalo, N. Y.
DESK LAMP—Chase Brass & Copper Company, Waterbury, Connecticut
SHOT GUNS, RIFLES AND AMMUNITION—Remington Arms Company, Inc., Bridgeport, Connecticut; Winchester Repeating Arms Co., New Haven, Connecticut; Browning Arms Company, St. Louis, Mo.; Super-X Shells and Cartridges—Western Cartridge Co., East Alton, Illinois; Peters Ammunition, Kings Mills, Ohio
FOUNTAIN PEN DESK SET—Conklin Pen Co., Toledo, Ohio
BOOKS—P. F. Collier & Sons, New York, New York
FAIRFAX STORMGUIDE AND OUTDOOR WINDOW THERMOMETER—Taylor Instrument Companies, Rochester, New York
CLOCK—Westclox—Western Clock Company, La Salle, Illinois
EVEREADY FLASH LIGHT—National Carbon Company, New York, New York
SIR WALTER RALEIGH TOBACCO—Brown & Williamson Tobacco Co., Louisville, Ky.

WORKSHOP

FLOOR—Armstrong Linoleum—Armstrong Cork Company, Lancaster, Pennsylvania
WALLS—Insulite Wallboard—Insulite Company, Minneapolis, Minnesota
PAINT—"Semi-Lustre"—Sherwin-Williams Co., Cleveland, Ohio
LATHE, COMBINATION AND BAND SAW UNITS—Delta Mfg. Co., Milwaukee, Wisconsin
POWER TOOLS—Walker Turner Company, Inc., Plainfield, New Jersey
GRINDING WHEELS AND SHARPENERS—Carborundum Company, Niagara Falls, New York
SHEARS AND SAWS—Henry Disston & Sons, Inc., Philadelphia, Pennsylvania
SAWS, FILES AND KNIVES—E. C. Atkins Company, Indianapolis, Indiana
GARDEN AND FARM EQUIPMENT—American Fork & Hoe Company, Cleveland, Ohio
PLANET JR. SEEDER AND WHEEL HOE—S. L. Allen Company, Philadelphia, Pennsylvania
SO-LO—Perfect Mfg. Co., Cincinnati, Ohio
Union Fork & Hoe Company, Columbus, Ohio
COMPRESSED AIR SPRAYER—F. E. Myers & Bro. Co., Ashland, Ohio
"METALLIC X" LIQUID SOLDER—Lux-Visel Co., Elkhart, Indiana
S W P HOUSE PAINTS AND ENAMELS—Sherwin-Williams Company, Cleveland, Ohio
PAINTS—Lowe Brothers, Dayton, Ohio

WOOSTER PAINT, VARNISH, CALCIMINE AND STIPPLING BRUSHES—Wooster Brush Co., Wooster, Ohio
3-IN-1 OIL—3-In-1 Oil Company, New York, New York
SERGEANT'S DOG REMEDIES—Polk Miller Products Corp., Richmond, Virginia
GLOVER'S IMPERIAL ANIMAL MEDICINES—H. Clay Glover, New York, New York
PULVEX FLEA POWDER—Wm. Cooper & Nephews, Inc., Chicago, Illinois

GARAGE

WALLS—Insulite Wallboard—Insulite Company, Minneapolis, Minnesota
PAINT—"Semi-Lustre" and "Floor-Enamel"—Sherwin-Williams Co., Cleveland, Ohio
SLIDETITE GARAGE DOORS AND FIXTURES—Richards-Wilcox Mfg. Company, Aurora, Illinois
AUTOMOBILES—Plymouth—Chrysler Motors Corporation, Detroit, Michigan; Chevrolet—General Motors Corporation, Detroit, Michigan; Buick—General Motors Corporation, Flint, Michigan
INTERNATIONAL TRUCK—International Harvester Co., Chicago, Illinois
TIRES—Firestone Tires—Firestone Tire & Rubber Company, Akron, Ohio; Goodrich Tires—B. F. Goodrich Rubber Company, Akron, Ohio; Goodyear Tires—Goodyear Tire & Rubber Company, Akron, Ohio; Corduroy Tires—Corduroy Rubber Company, Grand Rapids, Michigan
WEED CHAINS—American Chain Company, Bridgeport, Connecticut

AUTOMOBILE BATTERIES—Willard Battery—Willard Storage Battery Co., Cleveland, Ohio; Globe Union Mfg. Company, Milwaukee, Wisconsin
ALEMITE LUBRICATION GUN—Alemite Mfg. Corp., Chicago, Illinois
PRESTONE—National Carbon Company, New York, New York
SIMONIZ—Simoniz Company, Chicago, Illinois
5-GALLON FIRE EXTINGUISHER—Fyr Fyter Company, Dayton, Ohio
CHAMPION SPARK PLUGS—Champion Spark Plug Co., Toledo, Ohio

MILK ROOM

WALLS—"Temprtile"—Masonite Corporation, Chicago, Illinois
PAINT—"Enameloid" and "Floor-Enamel"—Sherwin-Williams Co., Cleveland, Ohio
SEPARATORS—International Separator—Intl. Harvester Company, Chicago, Illinois; DeLaval Separator—DeLaval Company, New York, New York; Melotte Cream Separator—Babson Brothers, Chicago, Illinois
MILK COOLERS—Frigidaire Company, Dayton, Ohio; Waukesha Motors Company, Waukesha, Wisconsin
MAGNETIC MILK UNIT—DeLaval Company, New York, New York
CREAM CITY SEAMLESS, SOLDERLESS MILK CANS—Geuder, Paeschke & Frey, Milwaukee, Wisconsin
SKY TEST STRAINER AND OTHER MILK ROOM EQUIPMENT—Geuder, Paeschke & Frey, Milwaukee, Wisconsin
BABCOCK BUTTER TESTER, SCALES AND WASH SINK—Creamery Package Company, Chicago, Illinois

Milk Room—continued

ELECTRIFIED SCREEN DOOR—*Electro-Static Mfg. Co., Niles, Michigan*
TANGLEFOOT FLY RIBBON—*The Tanglefoot Co., Grand Rapids, Michigan*
TANGLEFOOT STOCK SPRAY—*The Tanglefoot Co., Grand Rapids, Michigan*
K. R. O. RODENT EXTERMINATOR—*K. R. O. Company, Springfield, Ohio*

HEATER ROOM

IDEAL RED FLASH BOILER AND "CORTO" RADIATORS (throughout the House)—*American Radiator Company, New York, N. Y.*
WATER SYSTEMS—*Fairbanks, Morse & Company, Chicago, Illinois; F. E. Myers & Bro. Company, Ashland, Ohio*
FARM LIGHT PLANT—*Fairbanks, Morse & Company, Chicago, Illinois*
BATTERIES FOR LIGHTING PLANT—*Willard Storage Battery Co., Cleveland, Ohio*
WALLS—*Insulite Wall Board—Insulite Company, Minneapolis, Minnesota*
PAINT—"Semi-Lustre" and "Floor-Enamel"—*Sherwin-Williams Co., Cleveland, Ohio*
ASH CAN—*Wheeling Corrugating Company, Wheeling, West Virginia*

SECOND FLOOR HALL

WALLS—*Armstrong "Linowall"—Armstrong Cork Company, Lancaster, Pennsylvania*
WALL BOARD—*Insulating Sheetrock—U. S. Gypsum Company, Chicago, Illinois*

FLOORS—*Armstrong Linoleum—Armstrong Cork Company, Lancaster, Pennsylvania*
PAINT—*Lowe Brothers, Dayton, Ohio*
LIGHTING FIXTURE—*Chase Brass & Copper Company, Waterbury, Connecticut*
STAIR CARPET—*Olson Rug Company, Chicago, Illinois*
OZITE STAIR CUSHION—*Clinton Carpet Co., Chicago, Illinois*

MASTER'S BEDROOM

WALLS AND CEILING—*Natural Celotex—Celotex Company, Chicago, Illinois*
FLOORS—*Armstrong Linoleum—Armstrong Cork Company, Lancaster, Pennsylvania*
PAINTED TRIM—*Lowe Brothers, Dayton, Ohio*
FLOOR WAX—*Dri-Brite—Miracul Wax Company, St. Louis, Missouri*
METAL FURNITURE AND BEDS, MATTRESSES AND SPRINGS—*Simmons Company, New York, New York*
ARMCHAIR—*Kroehler Mfg. Company, Chicago, Illinois*
ALADDIN FLOOR LAMP—*Mantle Lamp Company, Chicago, Illinois*
TABLE LAMP—*Chase Brass & Copper Company, Waterbury, Connecticut*
MASLAND RUG—*C. H. Masland & Sons, Carlisle, Pennsylvania*
OZITE RUG CUSHION—*Clinton Carpet Company, Chicago, Illinois*
RADIOS—*Sparton—Sparks-Withington Company, Jackson, Michigan; G. E.—General Electric Company, Schenectady, New York*
CLOPAY WINDOW SHADES—*Seinsheimer Paper Company, Cincinnati, Ohio*

BLANKETS—*West Unity Woolen Mills, West Unity, Ohio*
QUILTS—*Stearns & Foster Company, Lockland, Ohio*
KIRSCH DRAPERY HARDWARE—*Kirsch Company, Sturgis, Michigan*
PAINTINGS—*Rex Brasher, Kent, Connecticut*
WESTINGHOUSE IVORY HOME FAN—*Westinghouse Electric & Mfg. Co., Mansfield, Ohio*
WESTINGHOUSE RADIANT ROOM HEATER—*Westinghouse Electric & Mfg. Co., Mansfield, Ohio*
DU PONT "PYRALIN" BOUDOIR ACCESSORIES—*E. I. Du Pont De Nemours & Co., Inc., Wilmington, Delaware*

GIRL'S ROOM

CEILING AND WALL BOARD—*Insulating Sheetrock—U. S. Gypsum Co., Chicago, Illinois*
WALLPAPER—*Mayflower Wallpaper—Star-Peerless Mills, Chicago, Illinois*
PAINT—*Lowe Brothers, Dayton, Ohio*
FLOOR—*Armstrong Linoleum—Armstrong Cork Co., Lancaster, Pennsylvania*
FLOOR WAX—*Dri-Brite—Miracul Wax Company, St. Louis, Missouri*
METAL FURNITURE, BED AND MATTRESS—*Simmons Company, New York, New York*
WHITE TABLE—*Mersam Bros. Corp., Celina, Ohio*
ARM CHAIR—*Kroehler Mfg. Co., Chicago, Illinois*
RUG—*Masland Rug—C. H. Masland Sons, Carlisle, Pennsylvania*
OZITE RUG CUSHION—*Clinton Carpet Co., Chicago, Illinois*
FUR THROW—*Schumacher & Co., New York, New York*
DRESSING TABLE LAMPS—*Chase Brass & Copper Co., Waterbury, Connecticut*

DRAPERY HARDWARE—*Kirsch Co., Sturgis, Michigan*
CLOCK—*Warren Telechron Co., Ashland, Massachusetts*
CLOPAY SHADES—*Seinsheimer Paper Company, Cincinnati, Ohio*
DU PONT "PYRALIN" BOUDOIR ACCESSORIES—*E. I. Du Pont De Nemours & Co., Inc., Wilmington, Delaware*

GUEST ROOM

WALLS AND CEILING—*Celotex—Celotex Company, Chicago, Illinois*
FLOORS—*Armstrong Linoleum—Armstrong Cork Company, Lancaster, Pennsylvania*
PAINT—*Lowe Brothers, Dayton, Ohio*
FLOOR WAX—*Dri-Brite—Miracul Wax Company, St. Louis, Missouri*
RUG—*Olson Rug Company, Chicago, Illinois*
FURNITURE—*Heywood-Wakefield Company, Boston, Massachusetts*
TWIN BEDS, SPRINGS AND MATTRESSES—*Simmons Company, New York, New York*
WALLPAPER ON HEADBOARDS OF BEDS—*Imperial Paper & Color Co., Glens Falls, New York*
CURTAINS AND BED SPREADS—*Indian Head Cloth—Nashua Mfg. Co., Nashua, New Hampshire*
BLANKETS—*West Unity Woolen Mills, West Unity, Ohio*
DRAPERY HARDWARE—*Kirsch Company, Sturgis, Michigan*
SEWING MACHINE—*Singer Sewing Machine Company, New York, New York*
ELECTRIC CLOCK—*Warren Telechron Company, Ashland, Massachusetts*
CLOPAY SHADES—*Seinsheimer Paper Company, Cincinnati, Ohio*

BOY'S ROOM

WALL BOARD—Insulating Sheetrock—*U. S. Gypsum Co., Chicago, Illinois*
 WALLS—Wall-Tex—*Columbus Coated Fabrics Corp., Columbus, Ohio*
 CEILING—Imperial Wallpaper—*Imperial Paper & Color Co., Glens Falls, New York*
 FLOOR—Armstrong Linoleum Co., *Lancaster, Pennsylvania*
 FLOOR WAX—Dri-Brite—*Miracul Wax Company, St. Louis, Missouri*
 PAINT—*Lowe Brothers, Dayton, Ohio*
 FURNITURE—*Conant-Ball, Boston, Massachusetts*
 MATTRESS—*Simmons Company, New York, New York*
 SHIP LAMPS—*Seaway Equipment Co., New York, New York*
 DRAPERY HARDWARE—*Kirsch Co., Sturgis, Michigan*
 CLOPAY SHADES—*Seinsheimer Paper Company, Cincinnati, Ohio*
 RADIOS—*Stewart-Warner Mfg. Co., Chicago, Illinois; Atwater Kent Mfg. Co., Philadelphia, Pennsylvania*
 PAINTINGS—*J. O'H. Cosgrave, New York, New York*
 FOUNTAIN PEN SET—*Conklin Pen Company, Toledo, Ohio*

BATHROOM

PLUMBING FIXTURES—*Crane Company, Chicago, Illinois*
 WALL BOARD—Insulating Sheetrock—*U. S. Gypsum Company, Chicago, Illinois*
 WALLS—Newtile—*Ruberoid Company, New York, New York*
 FLOORS—Eternite Floor Tile—*Ruberoid Company, New York, New York*

PAINTS—*Lowe Brothers, Dayton, Ohio*
 ELECTRIC FIXTURES—*Chase Brass & Copper Company, Waterbury, Connecticut*
 WESTINGHOUSE CURLING IRON—*Westinghouse Electric & Mfg. Co., Mansfield, Ohio*
 SHOWER CURTAIN—*I. B. Kleinert Rubber Company, Inc., New York, New York*
 WINDOW CURTAINS—*I. B. Kleinert Rubber Company, Inc., New York, New York*
 WALLPAPER—*Imperial Paper and Color Company, Glens Falls, New York*
 TOWELS—*Cannon Mills Co., New York, New York*
 SUPPLIES—
 Blue Jay Corn Plasters Jonteel Face Powder
 Tums Junis Face Cream
 Scholl Zino Pads Golden Glint Shampoo
 Pepsodent Toothpaste Johnson & Johnson Baby
 P & G Cocoa Castile Soap Powder
 Lifebuoy Soap Gillette Razor
 Listerine Goodrich Hot Water Bottle
 Listerine Toothpaste Musterole
 Castoria Bon Ami
 Tincture of Iodine

LINEN CLOSET

WALL BOARD—Insulating Sheetrock—*U. S. Gypsum Company, Chicago, Illinois*
 PAINT—*Lowe Brothers, Dayton, Ohio*
 TOWELS, SHEETS AND PILLOWCASES—*Cannon Mills Co., New York, New York*
 BLANKETS—*West Unity Woolen Mills, West Unity, Ohio*

VACUUM CLEANER—Hoover Vacuum Cleaner—*Hoover Company, North Canton, Ohio*
 CARPET SWEEPER—Bissell "Silver Streak"—*Bissell Carpet Sweeper Co., Grand Rapids, Michigan*
 FLOOR WAX—Dri-Brite—*Miracul Wax Company, St. Louis, Missouri*
 EVEREADY WALL LIGHT—*National Carbon Company, New York, New York*
 "DIFUSOR" MOTH REPELLANT—*The Tanglefoot Company, Grand Rapids, Michigan*

SUN DECK PORCH

OUTDOOR FURNITURE—*H. C. White Company, North Bennington, Vermont; The Howell Company, Geneva, Illinois*
 FLOORS—Ruberoid Evergreen Roofing—*Ruberoid Company, New York, New York*
 REED RUG—*Waite Carpet Company, Oshkosh, Wisconsin*
 KIDDIE CAR—*H. C. White Company, North Bennington, Vermont*

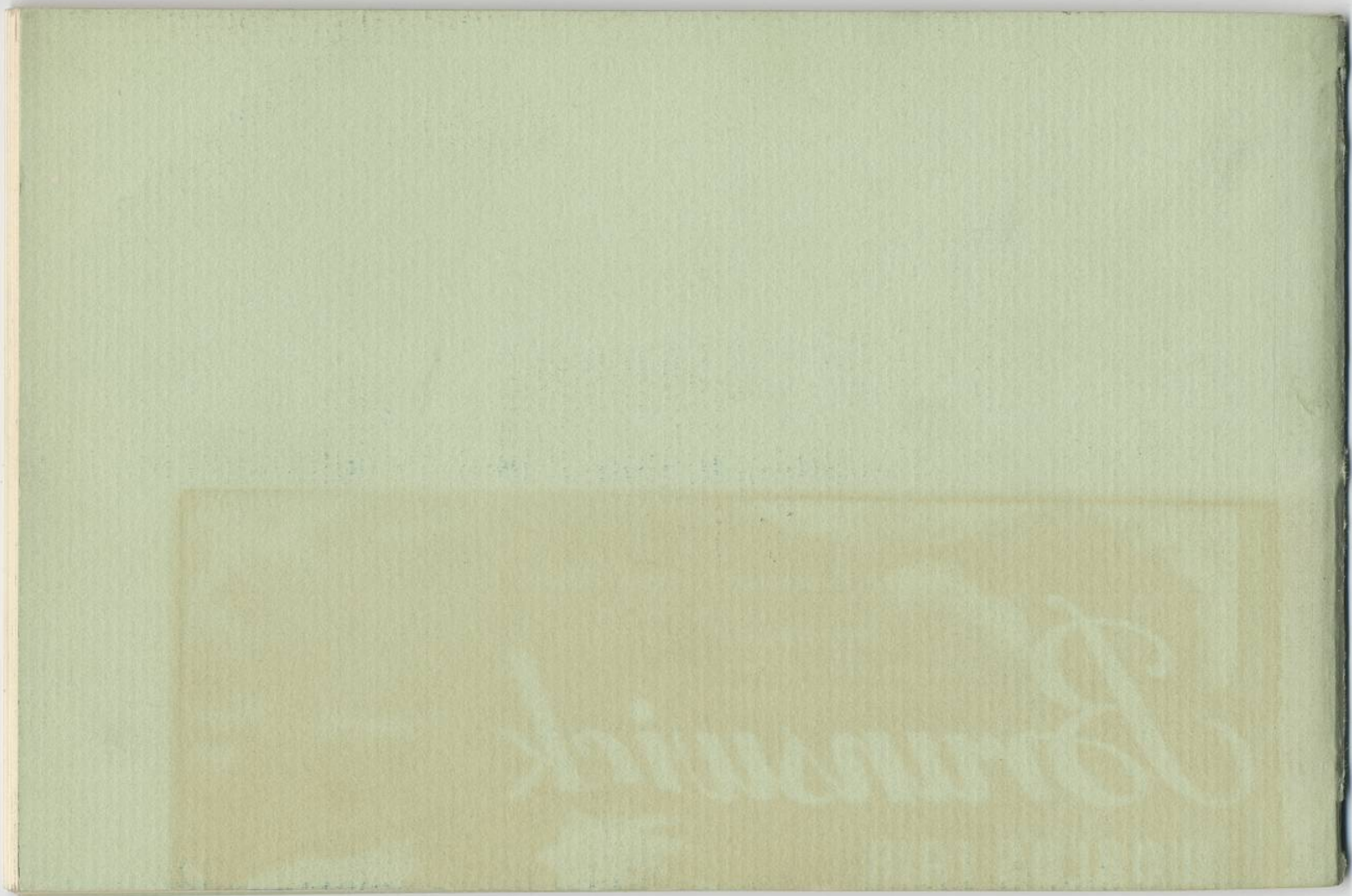
LANDSCAPING AND GARDEN

PATIO BRICK—*American Face Brick Association, Chicago, Illinois*

AMERICAN LAWN FENCE AND AMERICAN TUBULAR STEEL POSTS—*American Steel & Wire Company, Chicago, Illinois*
 GARDEN HOSE—Goodrich Multi-Spray—*B. F. Goodrich Company, Akron, Ohio*
 TREES, FLOWERS, SHRUBS, MOSS AND ROCK GARDEN POOL—*Wm. Tricker, Inc., Saddle River, New Jersey; Independence, Ohio; Pfund-Bell Nurseries, Elmhurst, Illinois; Stark Bros. Nurseries, Louisiana, Missouri; Jackson & Perkins Co., Newark, New Jersey; Atkins & Durbrow, New York, New York*
 RUSTIC GARDEN FURNITURE—*Rustic Hickory Furniture Company, LaPorte, Indiana*
 GARDEN FURNITURE—*H. C. White Company, North Bennington, Vermont; The Howell Company, Geneva, Illinois*
 TREE TANGLEFOOT—*The Tanglefoot Company, Grand Rapids, Michigan*
 ELECTRO-STATIC LAMP (insect trap)—*Electro-Static Mfg. Co., Niles, Michigan*
 BLACK LEAF 40 INSECT DESTROYER—*Tobacco By-Products & Chemical Corp., Louisville, Kentucky*
 LAWNMASTER LAWN SPRINKLERS—*National Brass Company, Grand Rapids, Michigan*
 NOVO BB LAWN MOWERS—*F. & N. Lawn Mower Company, Richmond, Indiana*

Complete blueprints of The Country Home
Model Farm House, with full building
specifications, may be secured by addressing
Architectural Editor, The Country Home,
250 Park Avenue, New York City.

Price two dollars a set.



Postage
will be paid by
The Crowell
Publishing
Company

No
Postage Stamp
Necessary
If Mailed in the
United States

Postage
will be paid by
The Crowell
Publishing
Company

No
Postage Stamp
Necessary
If Mailed in the
United States

BUSINESS REPLY CARD

FIRST-CLASS PERMIT No. 144 (Sec. 510, P. L. & R.), New York, N. Y.

The Country Home
250 Park Avenue
New York, N. Y.

BUSINESS REPLY CARD

FIRST-CLASS PERMIT No. 144 (Sec. 510, P. L. & R.), New York, N. Y.

The Country Home
250 Park Avenue
New York, N. Y.

The Country Home
250 Park Avenue
New York, N. Y.

Please see that I receive information pertaining to the subjects which I have checked.

- | | | |
|---|--|---|
| <input type="checkbox"/> Automobiles and trucks | <input type="checkbox"/> Garage equipment | <input type="checkbox"/> Plumbing and fixtures |
| <input type="checkbox"/> Blankets, quilts and bed-spreads | <input type="checkbox"/> Garden equipment | <input type="checkbox"/> Radios |
| <input type="checkbox"/> Drapery and curtains | <input type="checkbox"/> Heating equipment | <input type="checkbox"/> Structural materials |
| <input type="checkbox"/> Drug products | <input type="checkbox"/> Kitchen equipment | Walls |
| <input type="checkbox"/> Electric tools | <input type="checkbox"/> Laundry equipment | Roof |
| <input type="checkbox"/> Farm light plants | <input type="checkbox"/> Lighting fixtures | Floors |
| <input type="checkbox"/> Farm machinery | <input type="checkbox"/> Milk Room equipment | <input type="checkbox"/> Wall coverings and wall-papers |
| <input type="checkbox"/> Farm water systems | <input type="checkbox"/> Paintings and art objects | <input type="checkbox"/> Workshop tools and equipment |
| <input type="checkbox"/> Fencing | <input type="checkbox"/> Paints | |
- NAME _____
- ADDRESS _____
- TOWN _____ STATE _____

The Country Home
250 Park Avenue
New York, N. Y.

Please see that I receive information pertaining to the subjects which I have checked.

- | | | |
|---|--|---|
| <input type="checkbox"/> Automobiles and trucks | <input type="checkbox"/> Garage equipment | <input type="checkbox"/> Plumbing and fixtures |
| <input type="checkbox"/> Blankets, quilts and bed-spreads | <input type="checkbox"/> Garden equipment | <input type="checkbox"/> Radios |
| <input type="checkbox"/> Drapery and curtains | <input type="checkbox"/> Heating equipment | <input type="checkbox"/> Structural materials |
| <input type="checkbox"/> Drug products | <input type="checkbox"/> Kitchen equipment | Walls |
| <input type="checkbox"/> Electric tools | <input type="checkbox"/> Laundry equipment | Roof |
| <input type="checkbox"/> Farm light plants | <input type="checkbox"/> Lighting fixtures | Floors |
| <input type="checkbox"/> Farm machinery | <input type="checkbox"/> Milk Room equipment | <input type="checkbox"/> Wall coverings and wall-papers |
| <input type="checkbox"/> Farm water systems | <input type="checkbox"/> Paintings and art objects | <input type="checkbox"/> Workshop tools and equipment |
| <input type="checkbox"/> Fencing | <input type="checkbox"/> Paints | |
- NAME _____
- ADDRESS _____
- TOWN _____ STATE _____