

THE YOKOHAMA EXPORT TEXTILE MANUFACTURERS' GUILD.

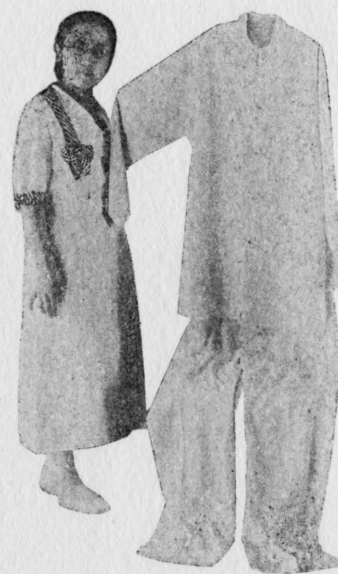




Manufacturing of Table Cloths.



Dressing Gown.



Home Dress.



Baby Dress.

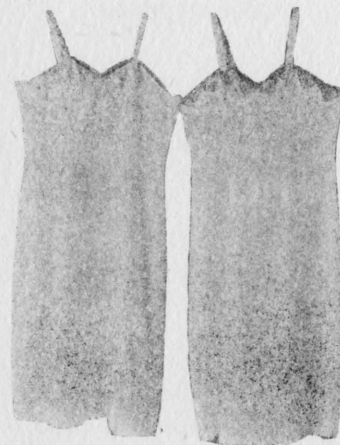
Half-coat.

Small Shirts.

Blazer.



Blazer.



Slip.

Night Gown.

THE manufacture of textile goods for export in Japan has appeared at Yokohama some sixty years ago. Since then Yokohama has made a great progress in either manufacturing or exporting of this line.

Our guild, accordingly, is the only public body organized under the Japanese law.

The guild is divided into 8 divisions according to the members' respective line of business.

I. Division

Manufacturers of Handkerchief, Mufflers.

II. Division

Table cloths, doily, centre piece, curtain frame, bed-spread, etc.

III. Division

Art Embroidery.

IV. Division

Kimono, Jacket, Mantle, etc.

V. Division

Pyjamas, Night-gown, Under-wear, Golf-coat, Happy-coat, Shawl made of pure silk.

VI. Division

Happy-coat, Bath-robcs, Pyjamas, Gown, Shawl made of Cotton and Rayon.

VII. Division

Shirts, Collar, Under-wear.

VIII. Division

Lamp-shade, Slippers, Baby-shoes.

Our members consists of manufacturers mentioned above numbering about five hundred in all. The workmen, however, employed in those factories numbered about 100,000. As the goods are all the handiwork of those skilful craftsmen, orders will be executed perfectly however big they may be and we trust that we will be able to get the customers' entire satisfaction.

It is really regrettable that the goods sent to the Chicago International Exposition are but a part of our manufactures, as it can not send all lines of our goods owing to the limit of space that is reserved for it in the exposition.

As for the business transactions, our guild will pay the best attention to this and will cheerfully answer any inquiries in regard to the business.

FUJITA SHOTEN

93 Furo-cho Itchome, Naka-ku, Yokohama City.

PHONE:—(3) 1934 (Chojamachi)

CABLE ADDRESS:—Wisteria Yokohama

CODE USED:—Bentley's and Universal Trade

Line of Business:

Various Cloth Goods
Renaissance, Drawn Work, Crochet Lace and
Embroidery made of Linen, Silk,
Rayon and Cotton, etc.

YASUDA & COMPANY

1341 Nakamura-cho, Naka-ku, Yokohama

Factories:

Yokohama, Enshu and Korea

PHONE: (2) 2680

Line of Business:

Manufacturers of
Various Linen goods & Lace.

M. KOJIMA SHOTEN

131, Okinacho, 3 chome, Naka-ku, Yokohama

Line of Business :

Manufacturer of and Dealer in
Table Cloths, Curtains and Saucers, etc.

M. USAWA SHOTEN

159, Furocho, 2 chome, Naka-ku, Yokohama

Line of Business :

Manufacturer of all kinds of Shirts

F. TAKASHIMA

146, Kotobukicho, 3 chome, Naka-ku,

YOKOHAMA

Line of Business :

Manufacturer of All Kinds of Shirts

T. OKAMURA SHOTEN

166, Kamie, Takigashira-machi, Isogo-ku,

YOKOHAMA

Line of Business :

Manufacturer of all kinds of Shirts

KYOSHINSHA WORKS

104 Tobecho, 3 chome, Naka-ku,
Yokohama

Tel. No. (3)-2150

Line of Business :

Linen Cut Work and
Rayon Sagara Embroidery

I. OSADA SHOTEN

138, Kotobukicho, 3 chome, Naka-ku,
YOKOHAMA

Line of Business :

Manufacturer of and dealer in
Table-cloths, Saucers.

T. MOTŌRI SHOTEN

52, Okinacho, 2 chome, Naka-ku,
YOKOHAMA

Line of Business :

Manufacturer of and dealer in
Silk, Cotton and Linen Pyjamas.

YAMASHITA SHOTEN

8, Matsukagecho, 1chome, Naka-ku, Yokohama
Tel. (3) 3452

Line of Business :

Manufacturer of and dealer in
Silk and Cotton, Night-clothes of all size,
and Embroidered, Kimono, Happy Coat,
Bed Clothes, etc.

N. HANYU SHOTEN

20, Bentendori, 1chome, Naka-ku,
YOKOHAMA

Line of Business :

Manufacturer of and dealer in
Table Cloths, Napkins, Linen Handkerchiefs.

K. TADOKORO

66, Nishimaecho, Naka-ku, Yokohama

Line of Business :

Manufacturer of and dealer in all kinds of
Japanese and Korean Linen Goods and Lace. etc.
Please communicate directly with my
address for orders.

T. FUJISAWA SHOTEN

No. 46, 2 chome, Okinacho, Naka-ku, Yokohama
Phone (3) 4250

Line of Business :

Manufacturer and Manufacturer's Agent of
Silk and Cotton Textile Goods and
General Sundries.

