

14

# STATE OF WEST VIRGINIA

H. G. KUMP, Governor



## ROAD MAP AND TOURIST GUIDE

COMPILED ESPECIALLY FOR

**"A Century of Progress"**

Chicago, 1934

ISSUED BY

**STATE ROAD COMMISSION OF  
WEST VIRGINIA**

CHARLESTON

NOTE: This map is not intended to show conditions of roads for travel. Motorists may obtain the regular free monthly road map at any garage, hotel, filling station, or auto club in West Virginia, or they may write direct to the Road Commission in Charleston.

## COMMERCIAL AIRPORTS

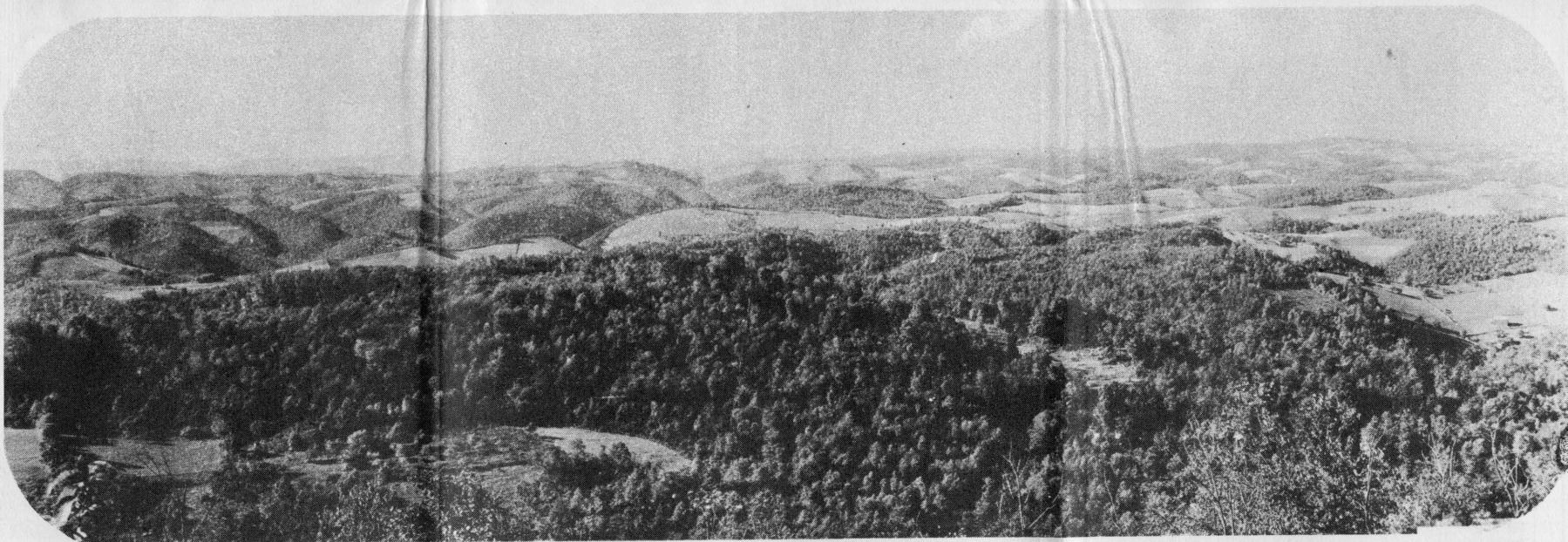
- BLUEFIELD—2 mi. S.W., N. of Bluefield Coll. Alt. 2,450. Rectangular; 48 acres, 4,800 by 600; sod, level, artificial drainage. Hills to N. and S. Service day only.
- CHARLESTON—Wertz Field. 9 mi. W. on Kanawha River. Alt. 600. Rectangular; 160 acres, 3,000 by 2,500; sod, level, natural drainage; 2 runways. Power lines to W.; water-tower, E. Radio-receiving. Day and night service. Station stop for American Airways, Cincinnati, O.-Washington, D. C.
- ELKINS—Harper Field. Municipal control. 2 mi. S. on Route 24-56. Alt. 1,900. Irregular, 110 acres. Runway 3,500 by 2,600. Sod; level, natural and artificial drainage. Four runways. Service day only. Radio receiving station.
- GLENDAL—12 mi. S. of Wheeling. Right bank of Ohio River. Service day only.
- HUNTINGTON—2 mi. W. on Ohio side of Ohio River, Between C. & O. and Dam 28. Alt. 570. Rectangular; 80 acres, 2,000 by 1,600; sod, level, natural drainage. Pole line on N., house and trees, S. Day and night service.
- MARTINSBURG—4 mi. S. Alt. 540. Irregular; 60 acres, 2,000 by 1,200; sod, level, natural drainage. Water-tower E., low spot NW. corner. Service day only.
- WESTON—Lt. Louis Bennett State Airport. 3 mi. N. of Weston, 11 mi. S. of Clarksburg. Alt. 996. Irregular; 75 acres, 1,800 by 1,400; 2,500 diagonal landing strip; sod, level, natural drainage, hill to E. Service day only. Interurban line to Clarksburg, Weston, Fairmont.
- WHEELING—3 mi. N. of city, across Ohio River, 2 mi. N. of Martins Ferry, Ohio. Alt. 650. Rectangular; 83 acres, 2,500 by 1,200; sod, level, natural drainage. One runway, N/S. Pole line at E. Green blinker lights at N. and S. ends. One blinker on tower at NW. end.
- WHITE SULPHUR SPRINGS—1.5 mi. SW. of city on State Highway 60, 1 mi. SW. of Greenbrier Hotel. Alt. 1,795. Irregular; 180 acres, 5,000 by 2,000; turf, level, natural and artificial drainage. Pole line to NW., woods to N., trees along creek to S. and W. Service day only.

## EMERGENCY FIELDS

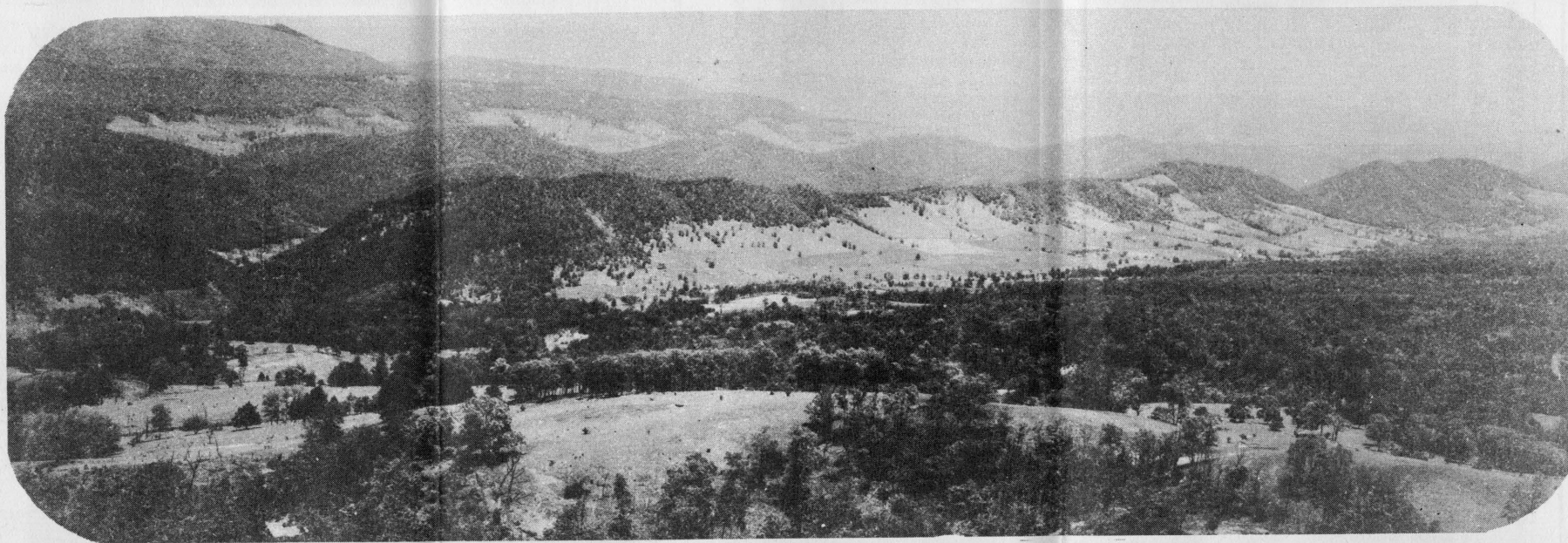
BURLINGTON	MORGANTOWN
CLARKSBURG (Craigmore)	PARKERSBURG (Waverly)
CRAIGSVILLE	PETERSBURG (American Airways)
FAIRMONT (Rivesville)	POINT PLEASANT (Ohio side)
MOOREFIELD	SPENCER

Actual Airport Locations are Noted on the Face of the Map





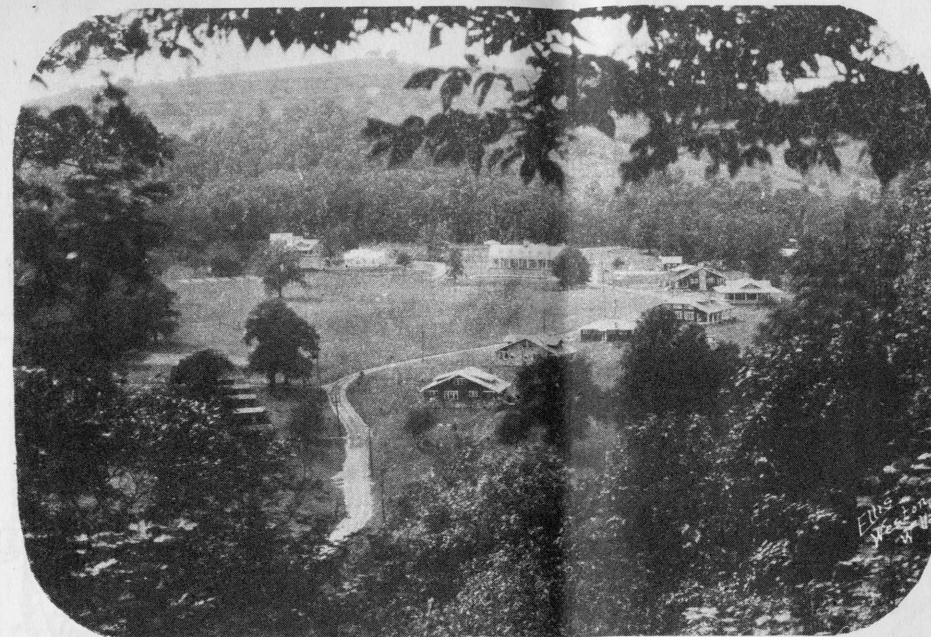
**A VIEW FROM ROUTE 24 IN POCAHONTAS COUNTY**—Scenery such as this caused world-travelers to dub West Virginia "The Switzerland of America."



**GERMANY VALLEY IN PENDLETON COUNTY**—A view from Route 5. Wide, sweeping vistas such as this make traveling in West Virginia a succession of never-to-be-forgotten sensations.



destroy its beauty.



**THE 4-H CAMP AT JACKSON'S MILL**—This is the first and largest camp of its kind in the world. Easily reached from Route U. S. 19. Airport in connection is one of the best in the state.



**A STUDY IN CONTRASTS**—Purebred cattle grazing in a mountain pasture so recently reclaimed from the frowning forest in the background that the stumps are still visible.



**A PASTORAL IDYLL**—West Virginia is one of the largest of sheep-growing states. This scene shows a browsing flock in a highland pasture.



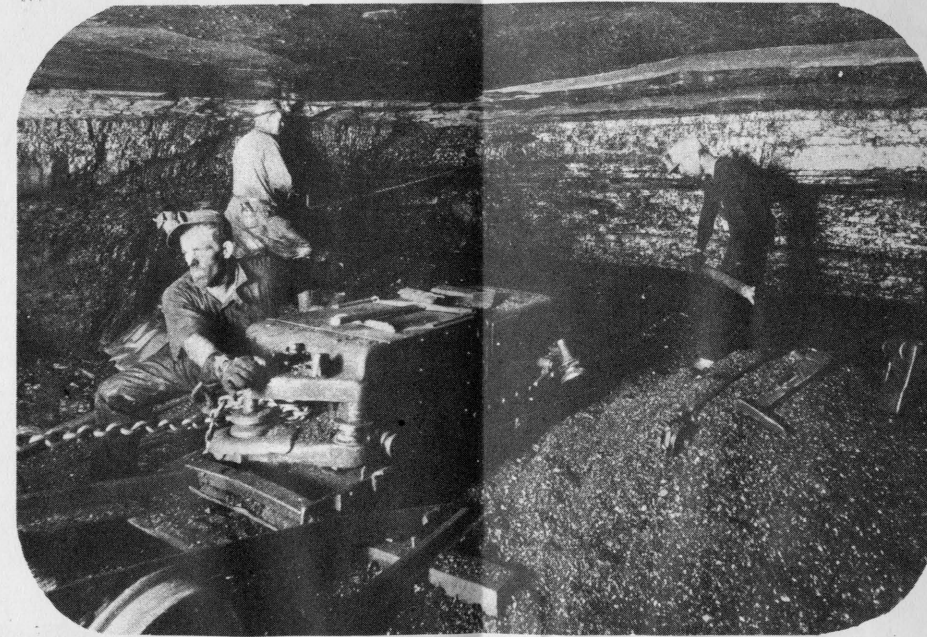
**A TYPICAL WEST VIRGINIA AIRPORT**—Landing fields such as this are scattered throughout the state, either on flat plateaus or in the midst of beautiful valleys. Flying in West Virginia gives one a grandstand seat in the theatre of the gods.



**A CENTRAL WEST VIRGINIA FARMING COMMUNITY**—Purebred cattle grazing in the shadow of forbidding hills. The hamlet in the background is but one of scores of small rural villages scattered among the mountains and valleys of the "Little Mountain State."



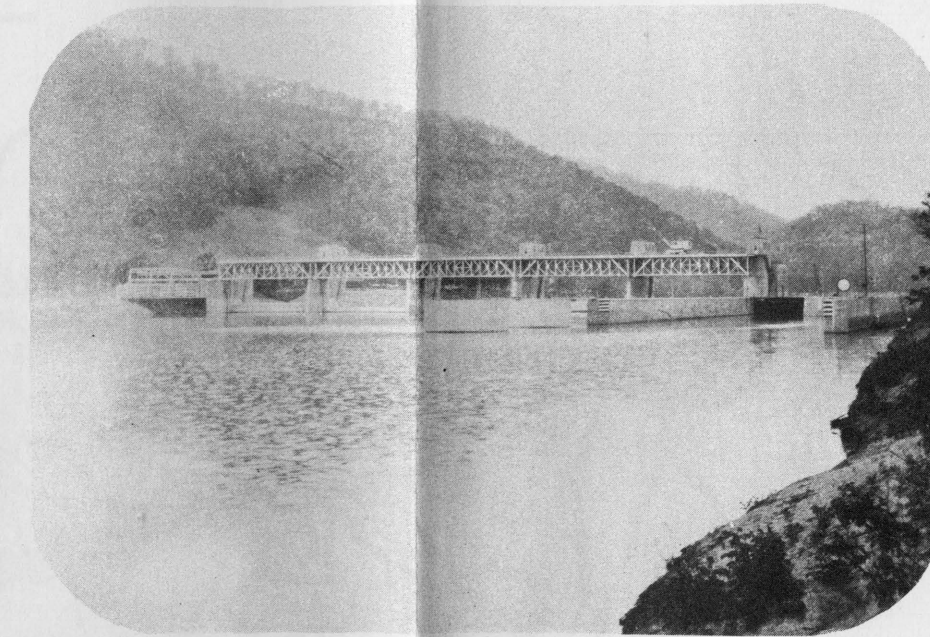
**LOGGING OPERATIONS** on a mountain plateau. Giant cedars being felled for West Virginia's great lumber market. West Virginia has a large lumber industry that operates in some of the most beautiful mountain country in the world.



**MINING BLACK DIAMONDS**—Interior scene in the depths of a coal mine in southern West Virginia. West Virginia alone could supply the world with coal for 100,000 years.

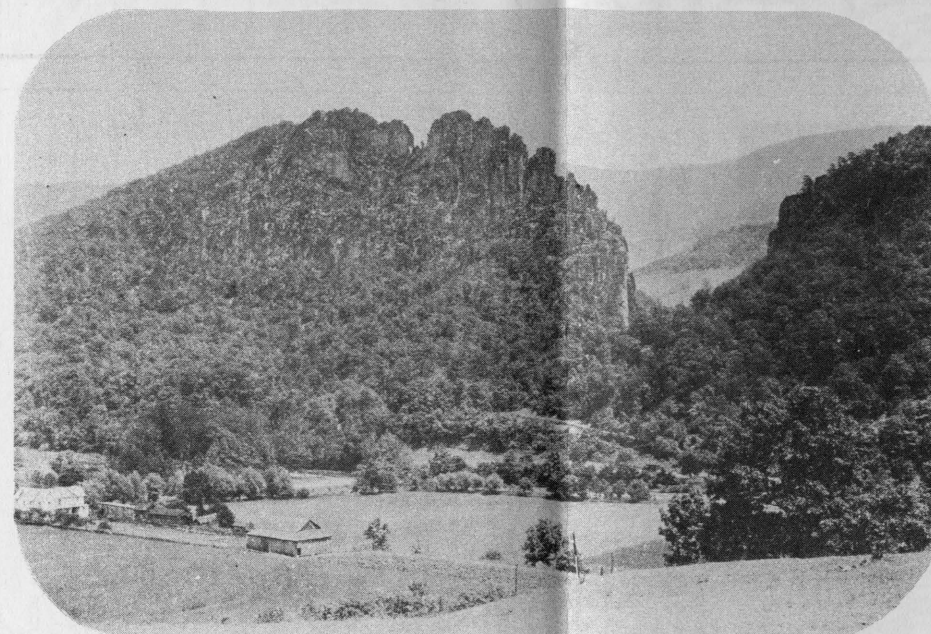


**A BRAWLING MOUNTAIN STREAM**, tumbling noisily over a precipice, becomes a thing of exceptional beauty, a delight to the ear and the eye. Similar waterfalls are legion in West Virginia.

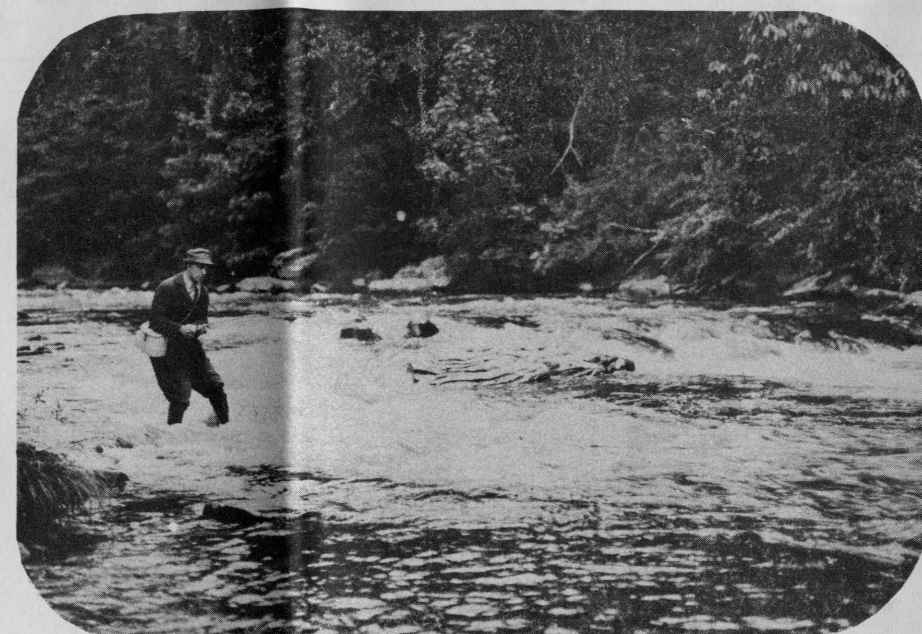


**U. S. LOCK AND DAM AT MARMET ON KANAWHA RIVER**—By means of similar huge engineering projects located on this river West Virginia has an outlet to the sea. It is quite possible for the "Switzerland of America" to go the real Switzerland one better and have a navy!





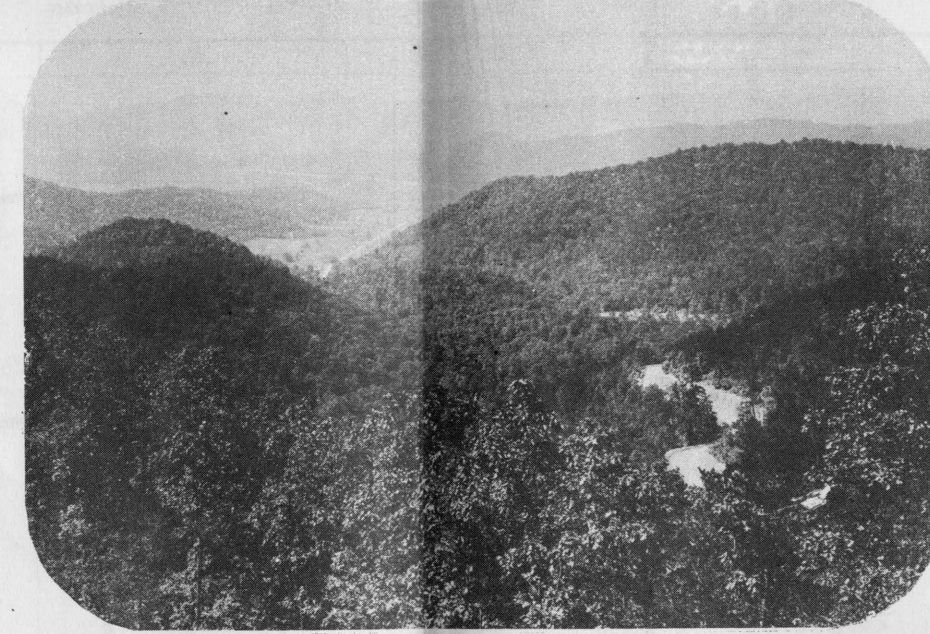
**SENECA ROCKS**—Older than time itself, these gigantic picture-rocks mark the last out-guard against man's relentless advance forward. Before them lies a rich and prosperous farmland country, behind them a gloomy prehistoric forest.



**FISHING FOR RAINBOW TROUT IN A MOUNTAIN RIVER**—West Virginia offers an inexhaustible stock of game fish, from the golden sun-perch to the fighting trout. A non-resident may fish for only \$1 for one day, or \$5 a season.



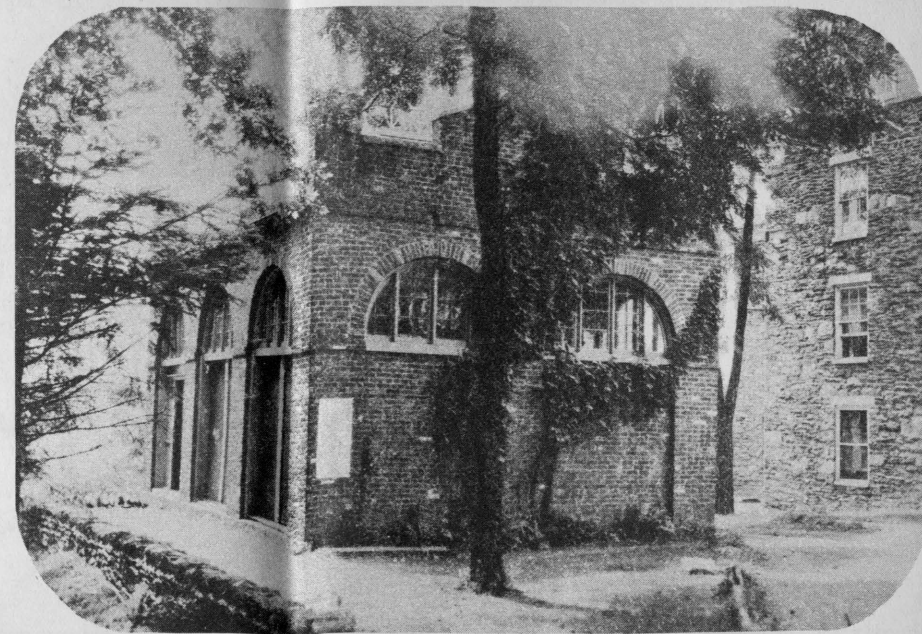
**THE BLACKWATER FALLS IN TUCKER COUNTY**, clothed in all its winter pomp and majesty. In summer this spot is a happy hunting ground for the trout fisherman; in winter it becomes a shrine of beauty, garbed in regal white.



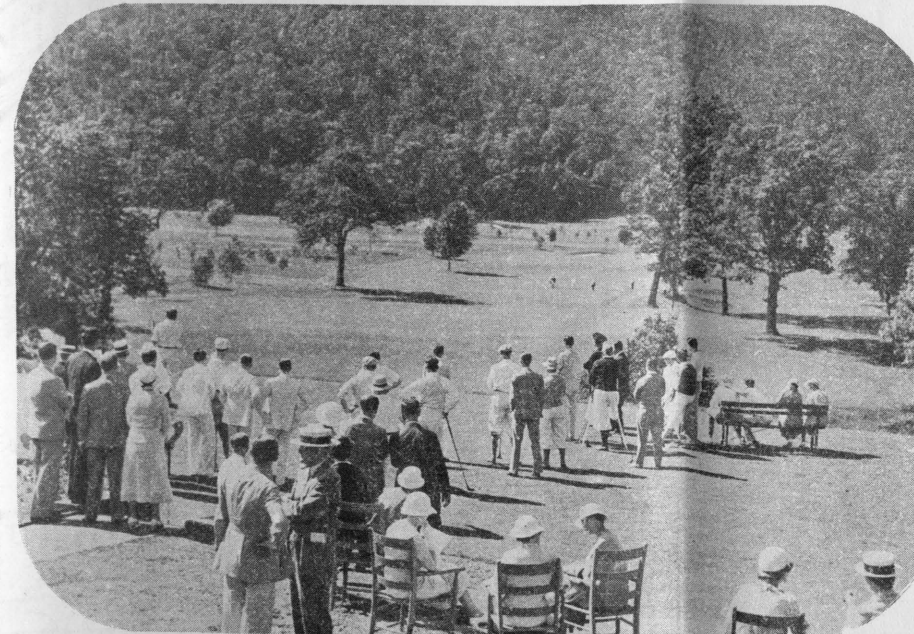
**A WINDING AND BREATH-TAKING MOUNTAIN HIGHWAY**—The building of roads in West Virginia was a magnificent feat of engineering. Today, 30,000 miles of paved roads lead into practically every beauty-spot in the state.



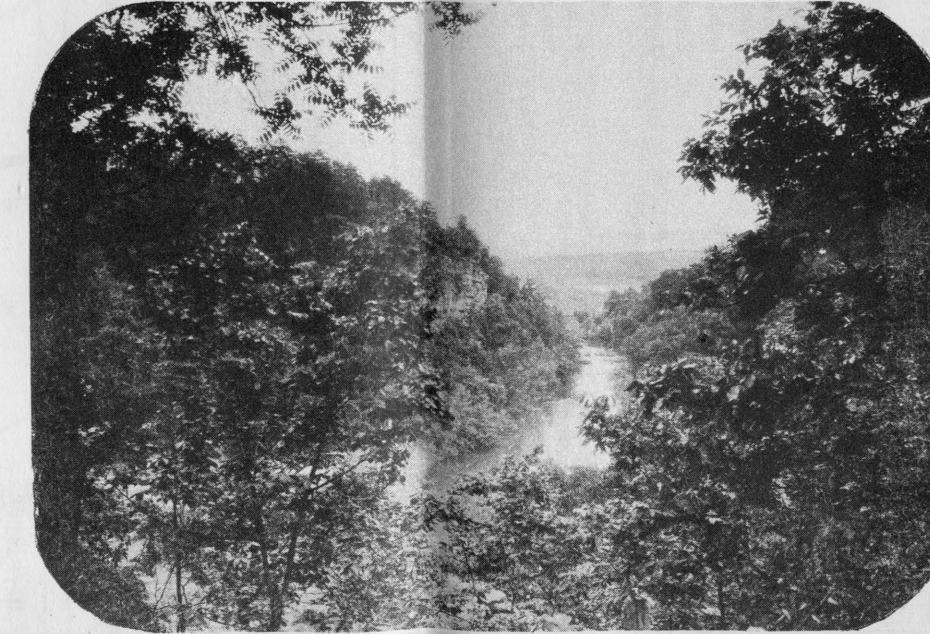
**THE FOREST PRIMEVAL**—This looks as though it were a scene from a lost world, or equatorial Africa. Actually it is but the valley of the Blackwater River in Tucker County, and can be reached by automobile from Route 32. Scenes such as this are found only in West Virginia where the hand of man has not been able to conquer the forces of nature and



**JOHN BROWN'S FORT** at Harpers Ferry. West Virginia, is especially rich in historical lore and tradition. It supplied men to both the Blue and the Grey, and thus from this long-past schism there has arisen an historical past that is not equalled in any other state. If you like history, come to West Virginia and drink your fill of the best.



**GOLF AT WHITE SULPHUR**—This is one of the finest courses in the east, and is the favorite of many champions. The Greenbrier Hotel and its environs at White Sulphur Springs constitute what is the best-known and largest spa in the United States. Famous the world over for the excellence of its sports facilities and the unsurpassed scenery of the surrounding



**THE TROUGH OF THE SOUTH BRANCH OF THE POTOMAC** in Hardy and Hampshire counties. Here the river is winding its way through a mighty rock gorge that it has cut for itself in ages past. A paradise for the fisherman, this renowned beauty-spot is the location of many camps and tourist homes.



# SPEND YOUR VACATION IN WEST VIRGINIA-THE SWITZERLAND OF AMERICA

## WEST VIRGINIA STATE CAPITOL

The Newest and Finest State Capitol in the United States. Cass Gilbert, Architect.



West Virginia's magnificent new Capitol Building, shown above, is situated in the east end of Charleston, on a tract of about fourteen acres. The building faces the Kanawha River, and has a background of towering hills. The total cost of building and grounds was approximately ten million dollars.

The Capitol was first located in Wheeling, from June 20, 1863, until April 1, 1870, when it was transferred to Charleston; and on May 21, 1875, it was changed back to Wheeling. Again, on May 1, 1885, it was moved to Charleston, where it has remained.

On January 3, 1921, the old Capitol building was destroyed by fire. A temporary wooden structure met the same fate March 2, 1927. The first unit of the new building was occupied in the summer of 1925 and the central unit early in 1932.



GOVERNOR H. G. KUMP

## A FEW OF THE POINTS OF INTEREST IN WEST VIRGINIA

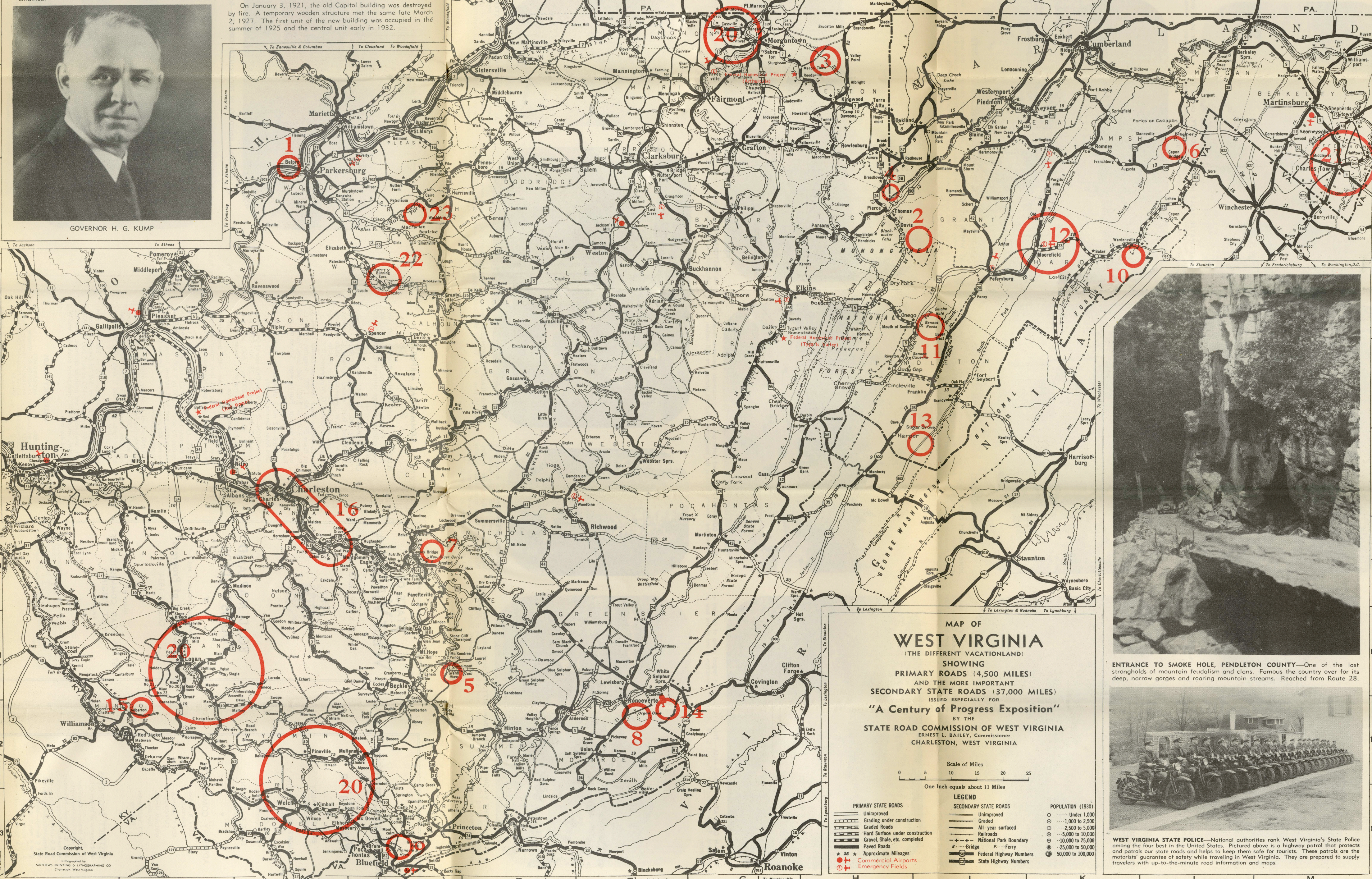
1. **BLennerHASSETT ISLAND**—In the Ohio River, within sight of Parkersburg. Where Aaron Burr plotted to form a Southwestern empire.
2. **CANAAN VALLEY**—A magnificent valley lying in an oval, surrounded by a ridge of hills.
3. **CHEAT RIVER REGION**—In Monongalia, Preston, and Tucker counties. Highlands and gorges, forests and rushing waters. Profusion of scenic views.
4. **FAIRFAX STONE**—Near Thomas, Tucker County. Was southern and western limit of the lands of Lord Fairfax.
5. **GRAND VIEW**—Northeast of Beckley in Raleigh County. Considered one of the most magnificent views in the State.
6. **ICE MOUNTAIN**—A natural refrigerator containing ice even on the hottest days. This phenomenon is in the eastern part of Hampshire County. At the base of a mountain along North River, for a space 200 yards long and 35 feet wide, ice in large quantities is found throughout the year.
7. **NEW RIVER GORGE**—One of the outstanding scenic attractions of West Virginia. Splendid views are obtained from U.S. No. 60 for a distance of several miles.
8. **ORGAN CAVE**—Large cave with passageways improved and lighted for about a mile. Used by Confederate forces for manufacture of saltpetre during war.
9. **PINNACLE ROCK**—Impressive eminence on U.S. 52 about six miles west of Bluefield.
10. **REYMAN MEMORIAL FARMS**—A magnificent tract near Wardsville, Hardy County, presented to the State for experimental purposes.
11. **SENECA ROCKS**—One of West Virginia's greatest natural scenic attractions. Huge picture rocks, famed the country over.
12. **SOUTH BRANCH VALLEY**—Extending through Pendleton, Grant, Hardy, and Hampshire counties. Widely acclaimed as West Virginia's most beautiful farming and grazing section. Location of historic homes, towers, and battlefields. A paradise for the fisherman, hunter, and vacationist. Traversed in its entirety by State Routes 28 and 42.
13. **SPRUCE KNOB**—Highest point in State.
14. **KATE'S MOUNTAIN**—Location of some of rarest flora and fauna in the world.
15. **WORLD'S LARGEST OAK TREE**—On Trace Mountain.
16. **KANAWHA VALLEY**—World's largest chemical manufacturing center. Scene of great river, dam, and lock development by the Army Engineers.
17. **WEIRTON**—Largest steel furnaces in the world.
18. **WHEELING**—Manufacturing city; largest patent-medicine plant in the world. Site of great steel mills.
19. **MOUNDSVILLE**—Site of America's largest prehistoric mound.
20. **GREAT COAL FIELDS**.
21. **JEFFERSON COUNTY**—Location of famous town of Harpers Ferry. A happy hunting ground for the historian, this county is steeped in tradition.
22. **BURNING SPRINGS**—Scene of world's greatest and most famous natural gas "boom."
23. **SITE OF ONLY ASPHALT MINE IN THE UNITED STATES.**

WE INVITE YOUR SPECIAL ATTENTION to the three Federal Homestead Projects in West Virginia. They are marked prominently on the map with a red star. The project at Arthurdale, in Preston County, is the favorite of Mrs. Roosevelt and she visits there often. A trip to any one of the three is made easy through the all-weather highways that have been built leading into them.

Few states can boast a more interesting background of business development over so short a span of years. Only a modern road system could bring the outside world into the state to see how lavishly Nature has here displayed her beauties. Tradition and history recognized all this, but it was our modern roads that brought the business and pleasure seekers within our borders in ever-increasing numbers. They are welcome. West Virginia offers the hospitality of a native courteous people who are conscious and proud of Nature's gifts.

One of West Virginia's greatest charms is her contrasts. Manufacturing centers and modern mining plants alternate with agricultural localities that breed prize-winning livestock for world markets. Mountain streams that are the angler's delight, and hardwood forests where a variety of game is plentiful in season, may be found just over the watershed from thriving industrial towns. West Virginia invites you to come and see these panoramic scenic treasures; these natural resources; these growing industries, and these inexhaustible coal fields.

For Fishing and Hunting Information, Consult the Map Issued by the State Conservation Commission



## MAP OF WEST VIRGINIA

(THE DIFFERENT VACATIONLAND)

SHOWING

PRIMARY ROADS (4,500 MILES)

AND THE MORE IMPORTANT

SECONDARY STATE ROADS (37,000 MILES)

ISSUED ESPECIALLY FOR

"A Century of Progress Exposition"

BY THE

STATE ROAD COMMISSION OF WEST VIRGINIA

ERNEST L. BAILEY, Commissioner

CHARLESTON, WEST VIRGINIA

Scale of Miles

One Inch equals about 11 Miles

LEGEND

PRIMARY STATE ROADS

SECONDARY STATE ROADS

POPULATION (1930)

Under 1,000

1,000 to 2,500

2,500 to 5,000

5,000 to 10,000

10,000 to 25,000

25,000 to 50,000

50,000 to 100,000

ENTRANCE TO SMOKE HOLE, PENDLETON COUNTY—One of the last strongholds of mountain feudalism and clans. Famous the country over for its deep, narrow gorges and roaring mountain streams. Reached from Route 28.



WEST VIRGINIA STATE POLICE—National authorities rank West Virginia's State Police among the four best in the United States. Pictured above is a highway patrol that protects and patrols our state roads and helps to keep them safe for tourists. These patrols are the motorists' guarantee of safety while traveling in West Virginia. They are prepared to supply travelers with up-to-the-minute road information and maps.

COME TO WEST VIRGINIA—WHERE THE TOURING COSTS ARE LOW AND THE MOUNTAINS COOL AND HIGH—WILD AND BEAUTIFUL



# State Road Commission OF West Virginia

▼  
ERNEST L. BAILEY  
Commissioner

MORTIMER W. SMITH  
Chief Engineer

H. O. WILES  
Asst. Chief Engineer

EDGAR F. DICKSON  
Secretary

▼  
ADVISORY COMMISSION

DR. J. B. GROVE  
Petersburg

ROY R. HORNOR  
Clarksburg

WILLIAM McKELL  
Glen Jean

E. T. HITCHMAN  
Wheeling

▼  
DISTRICT ENGINEERS

(And Location of District Offices)

1. G. W. McAlpin—Charleston.
2. C. M. Binford—Huntington.
3. W. H. Schimmel—Parkersburg.
4. Frank D. McEnteer—Clarksburg.
5. B. D. Johnson (Acting)—Keyser.
6. Harry McGraw—Moundsville.
7. E. C. Bennet—Weston.
8. M. R. Hamill (Acting)—Elkins.
9. E. L. Worthington—Lewisburg.
10. L. R. Taylor—Princeton.