

*The Travel and Transport Building, one of the Unique World's Fair Structures*

Members of the party will assemble at the hotel not later than 7.30 p. m., Central Standard time, to board motor coaches which will convey us to the Baltimore and Ohio R. R., Grand Central Station, to take the train en route home.

C. S. T.

Lv. Chicago (Baltimore and Ohio R. R.)..... 8.45 p. m.

Breakfast—luncheon—dinner served en route.

#### SATURDAY

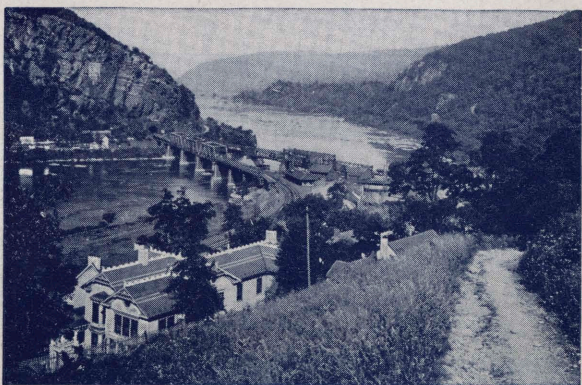
Ar. Chester..... E. S. T. 7.32 p. m.

Ar. Philadelphia..... 7.50 p. m.

It will be possible to join the Christian Endeavor Fellowship Tours at the following western points at the prices designated:

	Pullman	Coaches
Connellsville.....	\$34.45	\$25.65
McKeesport.....	32.95	24.45
Braddock.....	32.80	24.30
Pittsburgh.....	32.45	23.95
New Castle.....	30.95	22.65

**Special Note**—The railroad ticket applying in connection with these tours is limited to fifteen days (for members using Pullman) and ten days (for members using coaches), so if passengers wish to remain in Chicago for a period longer than that covered by the tour they may do so at their own expense, within the limit of the ticket



*Historic Harper's Ferry, W. Va., on the Baltimore & Ohio R. R., one of the many scenic points along our route*

### GENERAL CONDITIONS

The Christian Endeavor Fellowship Tours are sponsored by the Philadelphia Committee of the Thirty-fifth International Christian Endeavor Convention.

The itineraries may be affected by alterations in railroad schedules or by other causes. The right is reserved to withdraw any tour announced and to make such alterations in itineraries as may be found desirable for the convenience of the parties and the carrying out of the tours; also to decline to accept or retain any person as a member of any party at any time. In all such cases where money has been received, the full or a proportionate amount will be returned.

The Philadelphia Committee of the Thirty-fifth International Christian Endeavor Convention give notice that all tickets and coupons issued by them, and all arrangements for transportation or conveyance, or for hotel accommodations are made by them as agents upon the express condition that they shall not be liable for any injury, damage, loss, accident, delay or irregularity which may be occasioned either by reason or defect in any vehicle, or through the acts or the faults of any company or persons engaged in conveying the passenger, or any hotel proprietor or servant, or of any person engaged in carrying out the arrangements of the tours or otherwise in connection therewith.

The Philadelphia Committee of the Thirty-fifth International Christian Endeavor Convention accept no responsibility for losses or additional expenses due to delays or changes in train schedules, sickness, weather, strikes, war, quarantine or other causes; and all such losses and expenses will have to be borne by the passenger.

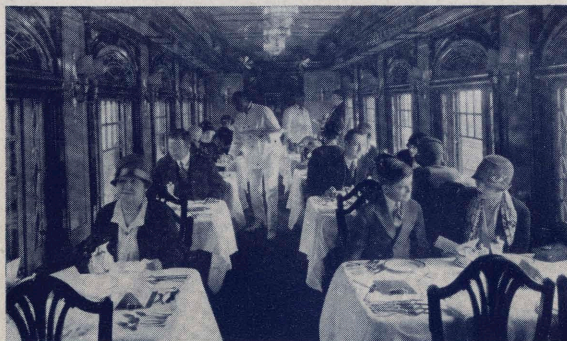
**Make Reservations Early, Sending a \$5.00 Deposit.**

Address all registrations and inquiries to—

LAWRENCE R. SHARP, Chairman,  
Transportation and Entertainment,  
1120 E. Montgomery Avenue,  
Philadelphia, Pa.

### BALTIMORE & OHIO RAILROAD

*"The Line of The CAPITOL LIMITED"*



*Our meals en route will be served in B. & O. Dining Cars—famous for food*



24A

## CHRISTIAN ENDEAVOR FELLOWSHIP TOURS

*TO THE BIGGER AND BETTER*

## 1934 WORLD'S FAIR



JULY 17-21

AND

AUG. 21-25

1934

**5-Day  
Escorted  
Tours**

**\$49.75**

(IN PULLMAN)

**\$37.95**

(IN COACHES)

*Arrives When Week-End Crowds Leave  
Leaves When Week-End Crowds Arrive*

—VIA—

**BALTIMORE & OHIO R. R.**



**T**HIS tour has been planned from the experience of a tourist to the Fair last year. The average visitor can cover all features without rushing or tiring oneself at the Fair in three days.

The Fair this year will be bigger and better than in 1933. Nearly all principal features and exhibitors have returned and there are a host of new and interesting additions.

Twenty-two million people attended the Fair in 1933. Surely twenty-two million people can't be wrong. You have wanted to see the World's Fair—this is your opportunity.

To take advantage of this opportunity we have arranged to operate two Five-Day All-Expense Tours as indicated, at an extremely low cost. Your transportation and hotel reservations are made in advance. You will be met in Chicago and taken directly to the hotel. Your admission into the Exposition and sight-seeing trip is furnished. In fact, everything has been planned in advance to save you from care and allow you to spend your time profitably.

The Christian Endeavor Fellowship Tours will be operated on the following dates:

**TUESDAY, JULY 17**

**TUESDAY, AUGUST 21**

The fare for the complete tour as outlined herein from Philadelphia and Chester, will be

**\$49.75 (Pullman)**

**\$37.95 (Coaches)**

which includes round-trip railroad ticket (via Baltimore and Ohio R. R.)—Pullman sleeping car accommodations, Pittsburgh to Chicago and return, or modern steel coaches—six meals in dining car en route—transfer between railroad stations

and hotel in Chicago—two nights' lodging at a well-known hotel in Chicago on basis of two persons to a double room with bath—two admissions to the Century of Progress Exposition—one Wonder Tour of the Fair Grounds.

While in Chicago no meals will be included as it is more convenient to the individual to make his own arrangements.

TIPS WHILE UNDER ESCORT will also be included.

## THE ITINERARY

### TUESDAY

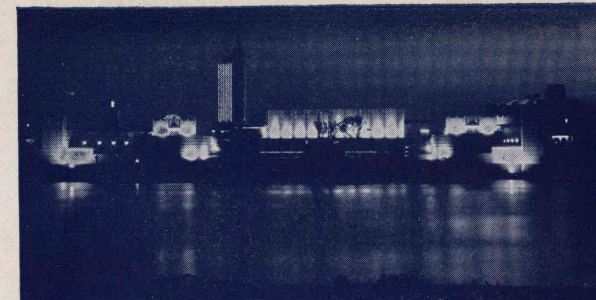
D. S. T.  
Lv. Philadelphia (B. & O. R. R.).....11.19 a. m.  
Lv. Chester, Pa.....11.36 a. m.

We travel in Baltimore and Ohio coaches of roomy and modern design, thus assuring the utmost in travel comfort. We will relax in our comfortable coaches to permit of becoming acquainted with our fellow-travelers, and soon the beauty of the scenery will occupy our interest. The train soon crosses the lovely Susquehanna River at Havre-de-Grace and soon we reach Baltimore, the birthplace of the Star-Spangled Banner, and a city of considerable interest.

Continuing onward, the train crosses the historic Patapsco River at Relay, Md., and before long the notable landmarks of the City of Washington, D. C., come into view.

Our train now turns directly westward from the Nation's Capitol and we traverse the renowned Potomac River Valley passing en route many places of historic interest and beauty, including famous Harper's Ferry and the Blue Ridge Mountains.

Luncheon and dinner served en route.



*Kaufman & Fabry Photo*

*The unusual lighting scheme transforms the World's Fair at night into a glowing wonderland*

### WEDNESDAY

6.45 a. m.—7.45 a. m. Breakfast served in dining car.

C. S. T.  
Ar. Chicago (Grand Central Station).....7.45 a. m.

Upon arrival in Chicago buses will be waiting to convey our party to our hotel where accommodations will be assigned on the basis of two persons to a double room with private bath, and here the three days will be spent.

Members of the party will be furnished with two souvenir admission tickets to the Century of Progress Exposition and one Wonder Tour of the Fair Grounds.

Hundreds of acres on the shores of Lake Michigan have been converted into a veritable fairyland of gaiety, life and color for your recreation, instruction and delight. Thousands of exhibits, millions of dollars worth of preparation have resulted in building up a gigantic pageant to astonish and entertain you in ways you have never experienced.

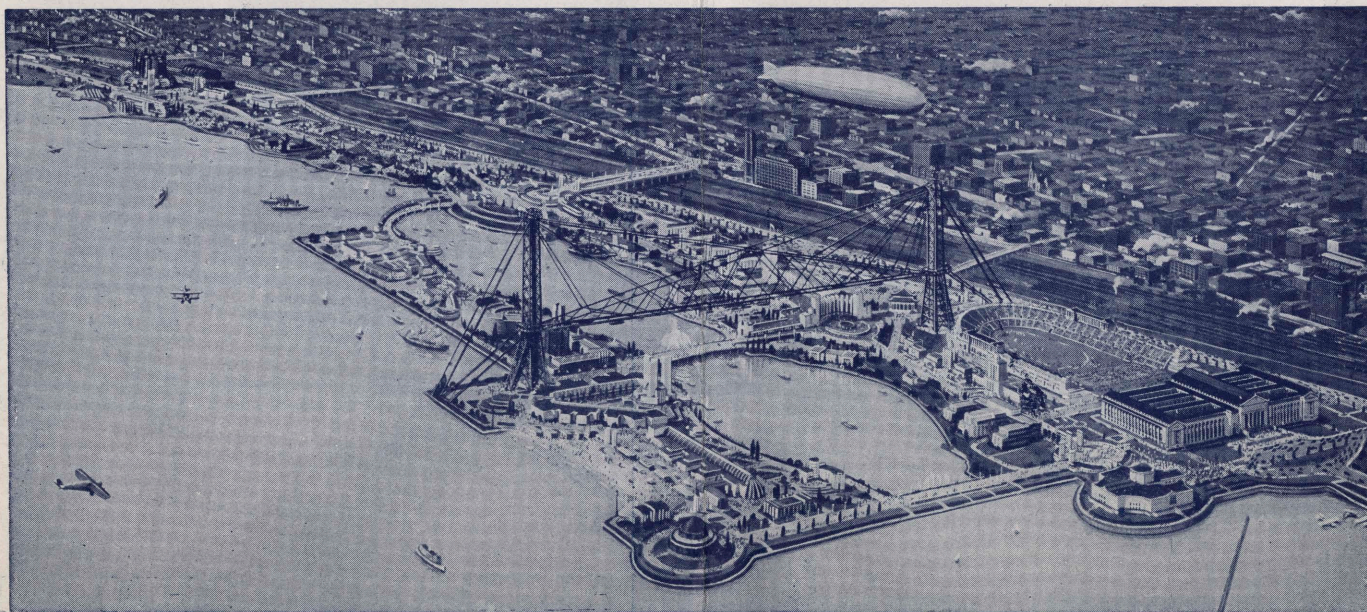
### THURSDAY

The full day is open for individual program.

### FRIDAY

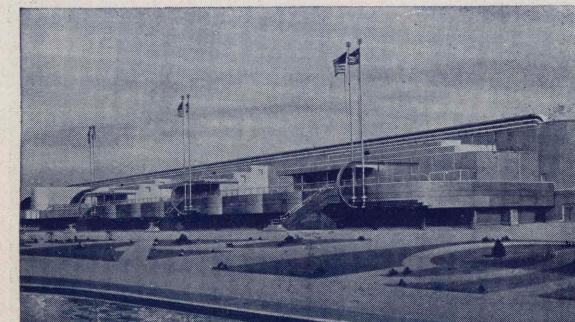
Many persons will doubtless return to the Century of Progress Exposition, or possibly to devote some time to seeing the City of Chicago.

Apart from the attractions of the great World's Fair, a visit to the City of Chicago is well worth the trip alone. This, the second largest metropolis in the United States, is the world's largest railway center.



© CHICAGO AERIAL SURVEY

*Birds-Eye View of "Century of Progress" International Exposition Grounds, Chicago, Ill.*



*In the World's Fair Agricultural Building a new kind of show interests both the farmer and city dweller alike*