

4196

24499

## BULLETIN No. 4

January 1, 1912

The Center is operated by the Executive Committee of the Hyde Park Juvenile Protective League, an incorporated organization, which seeks to promote the physical and moral welfare of the boys and girls of the community. The Executive Committee has appointed a Committee of Management to supervise the Center. This Committee holds regular meetings for the consideration of all matters affecting the Center, and reports its actions in full at the regular monthly meetings of the Executive Committee.

### OFFICERS OF THE LEAGUE AND EXECUTIVE COMMITTEE.

James R. Angell .....	President
Shailer Mathews	
Charles A. Marsh .....	Vice-Presidents
Frank B. Tarbell	
Mrs. Carl D. Buck .....	Secretary
Mrs. James P. Hall .....	Cor. Secy.
D. A. Peirce .....	Treasurer
Arthur J. Mason..	Chairman Finance Committee
Mrs. Lyman A. Walton .....	
.....	Chairman Management Committee
Miss Sarah B. Tunnickliff.....	
.....	Chairman Visiting Committee
Mrs. Charles S. Eaton.....	
.....	Chairman Membership Committee

### CHAIRMEN OF SUB-COMMITTEES OF MANAGEMENT COMMITTEE.

Boys' Work .....	Dr. T. G. Allen
Girls' Work .....	Mrs. A. V. Powell
Woman's Work .....	Miss S. B. Tunnickliff
Library .....	Mrs. F. J. Miller
Voluntary Librarian .....	Miss Margaret Miller

Delegates to Juvenile Protective Association—Mrs. A. V. Powell, Mrs. H. E. Ambler, Miss S. B. Tunnickliff.

## EMPLOYED OFFICER.

Miss Zelma Davidson .....  
.....Director of Boys' and Girls' Work

## SCHEDULE OF ACTIVITIES.

Mondays, Wednesdays, Fridays (Boys' Days)—

3—6:30 Ages 7-9. Play, Library; Gymnastic Dancing, Story Hour—Monday; Cooking, Wednesday; Handicraft, Friday.

7—9:00 Monday—Ages 13 and over, Play, Library. Wednesday and Friday—Ages 10-12, Play, Library, Singing.

7:30—9 Hyde Park High School Gymnasium, Ages 13-16, (or 110 lbs. weight) Wednesday, Ages 16 and over (or over 110 lbs.) Friday.

Tuesdays, Thursdays, Saturdays (Girls' Days),

3—6 Play, Library, Cooking, Sewing; the last omitted Saturday.

Tuesdays, Thursdays,

7—9 Play, Library, Cooking.

Assembly Hall—Boys' Honor Club—Ages 10-15.

Saturday,

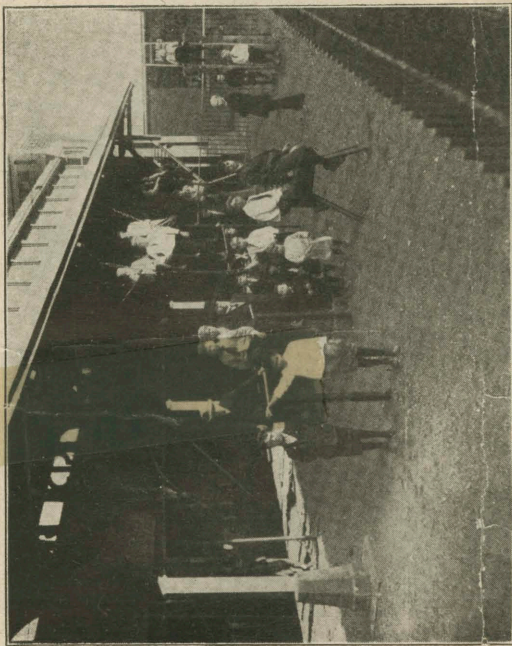
9—12 Play, Library, Story Hour.

7—11 Gymnastic and Social Dancing Boys and Girls over 14.

Visitors are welcome at all times.







## BOYS WORK.

During the summer the Center maintained its out-door gymnasium at the old quarters, 57th St. and Lake Ave. At present the gymnasium of the Hyde Park High School is being rented two evenings a week and about 80 boys are in attendance. Basket ball teams and general class exercises have been organized under Mr. Franklin of the Hyde Park Y. M. C. A. During the autumn a winning football team was organized among the older boys. A very successful dancing class has met Saturday evenings. Rosalie Hall was used for this purpose until the present quarters were secured.

## GIRLS WORK.

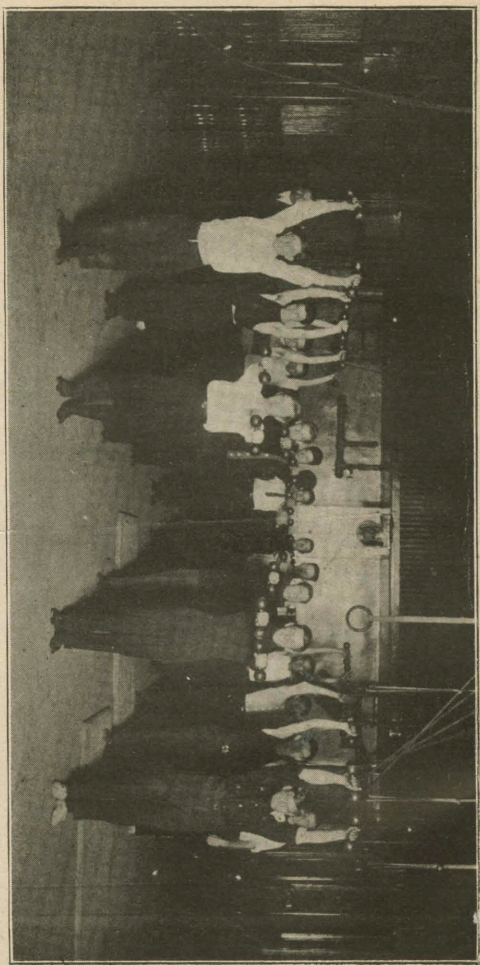
More than 300 girls have been connected with the Center. During the summer the play ground was used by an average of 50 to 60 a day, from the tiny children who enjoyed the sand pile to the older girls who found the swings, giant stride and flying rings attractive.

The kitchen is used by four classes, two of little girls, two of those over 14. There is a class in gymnastic dancing. Four groups of younger girls meet for sewing once a week and end with half an hour of games.

The Saturday evening parties have been already mentioned.

## WOMAN'S WORK.

The Woman's Club meeting the second Wednesday of each month, was organized for social and relief work in the neighborhood. Financial help in some cases has been rendered, employment found for a number of people, a large amount of clothing collected and distributed and





some entertaining lectures, parties and entertainments given.

### LIBRARY.

The Library and Reading Room of the Hyde Park Center contains over 1,000 volumes. Of these not more than 700 are really suited to our needs. Twenty magazines and other periodicals are also contributed regularly and placed on reading tables in the playroom. These magazines are sent each month, after using, to the Contagious Ward of the Cook County Hospital. A story hour is again an attraction as it was in the spring and helps to introduce the children to the Library. Books are lent for home reading. Over 100 volumes are regularly out on cards. More books for children are needed.

### FINANCE.

The Center is being administered on an average monthly expenditure of approximately \$180. Its monthly income averages \$200. The new quarters are in many respects superior to the old. We are reaching more children than previously and our hold on the neighbors is much firmer. We have their sympathy and confidence as never before. On the other hand our expenses are somewhat larger and we must have \$250 a month to continue. We particularly wish to increase our membership in order that we may have the moral backing of a larger number of the residents of our district. We invite investigation.

Persons who desire to join the League, or to make a contribution toward the support of its work, may fill out the accompanying form and forward it to Mrs. James P. Hall, Cor. Sec., 1308 East 58th St.

Chicago, ..... 191

**To HYDE PARK CENTER, Dr.**

Under the Auspices of the Hyde Park Juvenile Protective League

**CLUB HOUSE: 5435 Lake Ave.**

Telephone Midway 6131

**Annual Membership Dues for the year 191 \$2.00**

**Special Contributions for the work of the Center \$**

**Make checks payable to  
D. A. PEIRCE, Treasurer**