



EDELLYN CAMPEON MERCURY
PURCHASED BY SNL-A-BAR FARMS AT LAST YEARS TOP

Edellyn Farms

18th ANNUAL AUCTION SALE of
SCOTCH SHORTHORN CATTLE

...

Monday, June 7th, 1943

THOS. E. WILSON, Owner

PLEASE NOTE



To all those who desire to come to Edellyn on Sunday, the day prior to the sale, we extend a cordial invitation to inspect our sale offering and our breeding herd as well.



We wish to call your attention to the A. J. Bruce Dispersal—Robt. Macfarlane Draft Sale, Union Stock Yards, Chicago, on June 8th the day following our sale.

**PLEASE BRING THIS
CATALOG WITH YOU TO THE SALE**



*We
Invite
You to Our
Best Production Sale . . .*

The seventeen annual sales held at Edellyn Farms have been a lot of pleasure and satisfaction to me and I look forward eagerly each year to the gathering here at the farm of all those that are interested in Shorthorn cattle.

It is with genuine pleasure that we again extend to you a very cordial invitation to Edellyn Farms on the occasion of our eighteenth annual auction which will feature sons and daughters of our great stock bulls, Calrossie Mercury and Edellyn Command. We have sold some outstanding lots of cattle in the past, but for quality and uniformity of type throughout, these are without a doubt the **Best of all time**.

Study this catalog carefully, for in it you will find bulls that are destined to be outstanding improvers of the breed and they are going to be worth owning. You will also find as fine a bunch of well bred heifers as was ever in any auction sale. They too are going to be worth owning for only on such foundations of quality and type, and from ancestry that are dependable producers can real progress be made with Shorthorns.

We also want you to see the marvelous calves by Edellyn Royal Leader, see our great herd of brood cows, Calrossie Mercury and Edellyn Command, the new crop of calves coming on and Edellyn in June. We certainly hope you will honor us with your presence on June 7th.

Thos. E. Wilson

Edellyn Farms

EIGHTEENTH ANNUAL AUCTION SALE OF

Shorthorns

Thos. E. Wilson, *Owner* Allan C. Atlason, *Mgr.*

TERMS AND CONDITIONS

HEALTH—The Edellyn Herd is Federally Accredited for Tuberculosis (Certificate No. 130053) and every animal has passed the blood test for Bangs Disease within thirty days of the date of the sale and they are guaranteed to comply with the health requirements of any State or any herd.

GUARANTEE—All Cattle in this sale will be sold under the standard guarantee endorsed by the American Shorthorn Breeders Association. Certificates of registry and transfer will be furnished with each lot sold. Shipment will be made as soon as possible after the close of the sale without trouble to the purchaser, but at their risk of loss or injury.

TERMS—Cash, unless other arrangements are made before the sale.

HOW TO GET TO EDELLYN FARMS

Chicago, North Shore and Milwaukee Trains (electric). From Adams and Wabash Street Station (elevated), Chicago to North Chicago Junction on the hour. The distance is 38 miles. Conveyances will be provided from this station to the farm.

Edellyn Farms are located 2 miles west and 1 mile south of Waukegan city limits. It is also 2 miles due west of North Chicago. The Farms are bounded on the north by State Road 120 (McHenry-Waukegan), on the east by U. S. 41 (Milwaukee-Chicago) Skokie Highway and on the west by State Road 42A, and on which will be found the entrance.

MAIL BIDS

Those unable to be present and who desire to do so may send buying orders to Will Johnson, Hal Longley or Mervin Aegerter of The Shorthorn World; Clint Tomson, Secretary, American Shorthorn Breeders' Association, John E. Halsey of Wallaces' Farmer and Tom Sherlock of Cornbelt Farm Dailies.

Auctioneers: A. W. Thompson and J. E. Halsey

TO BE HELD AT EDELLYN FARMS

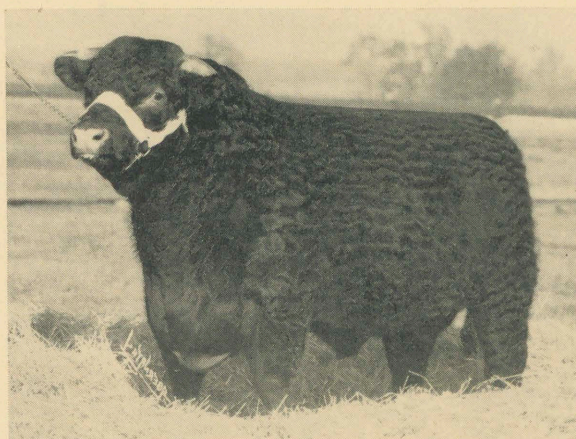
Wilson, Illinois
MONDAY, JUNE 7th, 1943

Sale Will Start at 1:00 O'Clock Central War Time

Lunch will be served at the farm.

Farm Telephone—Waukegan Majestic 952Y2

• • •
EDELLYN ROYAL LEADER, winner as a calf at both the American Royal and International and grand champion at the Indiana State fair was the grand champion at the Wisconsin State fair, the only time shown last year. He is the popular choice of All-American honors being recognized everywhere as one of the greatest bulls the breed has produced to date, anywhere or any place. His calves are Models of his own perfect form and color.



Edellyn Royal Leader

*Popular choice for
 All-American honors.*

Bull

For Reference Only

EDELLYN ROYAL LEADER 2057560

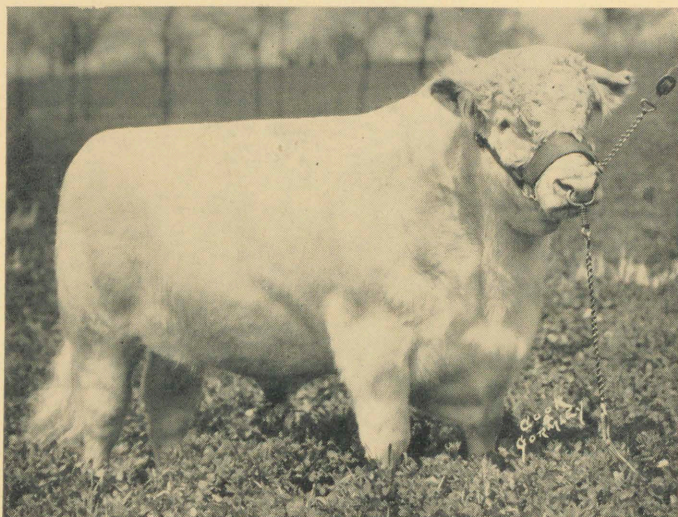
Red, calved December 9, 1940. Bred by W. McNair Snadden, Blairdrummond, Sterlingshire, Scot.; Imp. in dam November 27, 1940 by and calved the property of Thos. E. Wilson, Ill.

Dams	Breeders of Dams	Sires	Breeders of Sires
2031989			
Coldoch Bonny Rothes	W. McNair Snadden	Coldoch Sensation (275892)	W. M. Snadden
Coldoch Rothes Fairy	S. W. McNair	Balthayock Grand National	W. M. Snadden
Coldoch Rothes Queen 2d	W. M. Snadden	Collynie Red Eagle (214703)	D. Webster
Coldoch Rothes Queen	W. M. Snadden	Coldoch President (179661)	W. M. Snadden
Beaufort Baroness 6th	Lord Lovat	Eclipse of Collynie 1111523	W. Duthie
Rothes Baroness 4th	Lord Lovat	Marlborough (132206)	C. H. Jolliffe
Rothes Baroness	Lord Lovat	Nestor of Cluny (116733)	Lady G. Cathcart
Winter	Lord Lovat	Master Millicent (84080)	T. B. Earle
Beaufort Pride 2d	Lord Lovat	Ian (76895)	C. Munro
Beaufort Pride	Lord Lovat	Royal Star 151795	J. L. Reid
		Proud Duke 141840	W. Duthie

Coldoch Sensation, sire, Bapton Crocus Leader (261766) by Calrossie Ringleader (235690), out of Bapton Crocus 13th (116718). Dam, Aldie Rosemary (160049) by Calrossie Satisfaction (249387), out of Aldie Red Rose (120596).

Balthayock Grand National, sire, Calrossie Grand National (268893) by Calrossie Control (255913), out of Calrossie Golden Butterfly (140712). Dam, Balthayock Victoria 26th (158733) by Coldoch Union Jack (249823), out of Balthayock Victoria 21st (129336).

Collynie Red Eagle, sire, Calrossie Augusta Monarch (179178) by Doune Monarch (155390), out of Augusta Queen 2d v62-657E. Dam, Windmill Lady Mabel (20909) by Lord Mayor (132036), out of Lady Mabel 2d v64-1010E.



Calrossie Mercury

● ● ●

CALROSSIE MERCURY, supreme champion at Perth, 1939, and supreme champion, Northern Counties show, 1938, being the only bull ever to defeat his sire the famous Calrossie Control. Mercury's first calf, Calrossie Souvenir, was Supreme Champion at Perth, 1941, selling to the Cluny Castle herd where he is making a great record as a sire. Sons of Calrossie Mercury are furnishing the impulse for better heads, deeper lower set, more compact bodies and thicker, smoother flesh. His daughters are the last word in type, character and femininity. There is no greater sire in America today than—Calrossie Mercury.

*The incomparable Perth Champion
and head of the New Dynasty.*

For Reference Only

Bull

CALROSSIE MERCURY 1957318 (290877)

White, calved October 17, 1937. Bred by J. MacGillivray, Nigg Station, Rossshire, Scot.; Imp. May 1939 by and owned by Thomas E. Wilson, Wilson, Illinois.

Dams	Breeders of Dams	Sires	Breeders of Sires
Calrossie Aug. Opal (179796)	J. MacGillivray	Calrossie Control (255913)	J. MacGillivray
Calrossie Augusta Polly	J. MacGillivray	Calrossie Nonpareil Chief	J. MacGillivray
Calrossie Jeanie Augusta	J. MacGillivray	Collynie Royal Leader 1492017	D. Webster
Augusta Queen 2d	William Black	Naemoor Ian (209839)	J. J. Moubray
Queen Augusta	Mrs. E. Walsh	Whiterow Flagship (123611)	A. W. Law
Augusta 104th	James Bruce	Master Phoenix (112475)	Earl Manvers
Augusta 62d	James Bruce	Waverley 136405	A. Strachan
Augusta 16th	James Bruce	Cap-a-Pie 106717	James Bruce
Augusta 6th	James Bruce	Duke of Edinburg 130843	James Bruce
Augusta 3d	James Bruce	Privy Seal 109647	A. Cruickshank
		Lord of the Isles 45269	A. Cruickshank

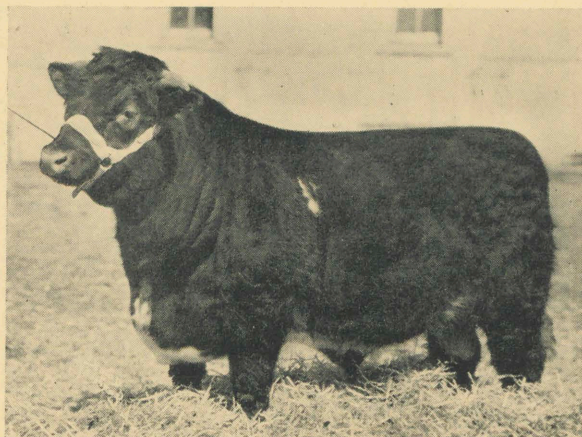
Calrossie Control, sire, Collynie Royal Leader 1492017 by Balcairn White Eagle 1259310, out of Eliza Lass v63-1226E. Dam, Calrossie Princess Mona (88109) by Naemoor Ian (209839), out of Calrossie Princess Marjory (64399).

Calrossie Nonpareil Chief, sire, Glastullich Waverley (237381) by Naemoor Jasper 1634156, out of Bruiach Margery (64430). Dam, Calrossie Nonpareil Fairy (110141) by Naemoor Jasper 1634156, out of Calrossie Nonpareil Princess (39349).

Collynie Royal Leader, sire, Balcairn White Eagle 1259318 by Collynie Golden Knight (135819), out of Edgcote White Mabel v61-722E. Dam, Eliza Lass v63-1226E by Masterstroke 650634, out of Eliza Lady v59-1055E.

• • •

EDELLYN COMMAND has always appealed to knowing cattlemen as their kind of a bull. As he matures this becomes more and more obvious. His sons are proving to be wonderful sires wherever they have gone and the popularity of Edellyn Command increases as this becomes evident. His daughters are held in high esteem, improving with age and making ideal brood cows that produce typy, good colored calves, and take extra good care of them. They have all proved to be extra good milkers.



Edellyn Command

*Sire of 10 wonderful heifers
in this sale.*

Bull**For Reference Only****EDELLYN COMMAND 2000000**

Roan, calved March 1, 1938. Bred by Charles A. Linzee Gordon, Cluny Castle, Aberdeenshire, Scot. Imported in dam December 1937. Calved the property of and owned by Thos. E. Wilson, Wilson, Ill.

Dams	Breeders of Dams	Sires	Breeders of Sires
1917362		Calrossie Command (275428)	J. MacGillivray
Cluny Rosewood 33d	C. A. Linzee Gordon	Cluny Sirdar Augustus	Lady G. Cathcart
Cluny Rosewood 26th	C. A. Linzee Gordon	Glastullich Sirdar 1719147	W. MacGillivray
Cluny Rosewood 5th	Lady G. Cathcart	Brawith Chieftain	K. P. MacGillivray
Cluny Rosewood	Lady G. Cathcart	President of the Mint 387170	D. Stewart
Rosewood 106th	A. T. Gordon	Lord Advocate 577175	A. T. Gordon
Rosewood 87th	T. F. Jamieson	Mountain Archer 149639	W. Duthie
Rosewood 72d	Jas. Bruce	Waverley 136405	A. Strachan
Rosewood 54th	Jas. Bruce	Cap-A-Pie 106717	Jas. Bruce
Rosewood 23d	Jas. Bruce	Duke of Edinburgh 130843	Jas. Bruce
Rosewood 13th	Jas. Bruce	Privy Seal 109647	A. Cruickshank

Calrossie Command, sire, Calrossie Contro. (255913) by Calrossie Royal Leader 1942-017, out of Calrossie Princess Mona (88108). Dam, Calrossie Cynthia (150436) by Glastullich Rover (237377), out of Calrossie Clipper Ella (130744).

Cluny Sirdar Augustus, sire, Glastullich Sirdar 1719147 by Naemoor Jasper 1634156, out of Doune Butterfly (40161). Dam, Cluny Augusta 21st (71720) by Brawith Chieftain (187661), out of Cluny Augusta 12th 1590749.

Glastullich Sirdar, sire, Naemoor Jasper 1634156 by Saltoun Crusader (184883), out of Naemoor Stella 7th (52915). Dam, Doune Butterfly (40161) by Eclipse of Collynie 1111523, out of Auchnacree Moth 17th v63-850E.



Edellyn Micah Mercury

● ● ●
EDELLYN MICAH MERCURY is so well balanced, so well proportioned and so short coupled and thick made, that no good judge will overlook this bull when looking for the best herd bull prospect that is for sale. This good headed calf is extremely level, smooth and carries out extremely well at the tail and is full and deep in the quarters. Out of one of Sultan Browndale's best daughters and a grandam, that is near perfect, and sired by Calrossie Mercury. There is every assurance that here is the "Breeding Bull of the year."

*A Mercury that will
 be The Breeding Bull of the Year.*

Lot 1

Bull

EDELLYN MICAH MERCURY 2112052

Red, calved January 29, 1942. Bred and owned by Thos. E. Wilson, Wilson, Illinois.

Dams	Breeders of Dams	Sires	Breeders of Sires
	1998432	Calrossie Mercury 1957318	J. MacGillivray
Edellyn Orange Blossom 36th	Thos. E. Wilson	Sultan Browndale 1772330	Thos. E. Wilson
Orange Shade (Imp.)	James Durno	Glastullich Watchman	W. MacGillivray
Uppermill Orange Bud	J. & L. Durno	Naemoor Kudos 1772996	J. J. Moubray
Orange Blossom 64th	J. & L. Durno	Millhills Clarion 1401582	Mrs. D. Stewart
Orange Blossom 50th	James Durno	Collynie Chief 828942	Wm. Duthie
Orange Bud	James Durno	Royal Mint 307807	Wm. Duthie
Orange Blossom 35th	J. K. Ledingham	Sittyton Prince 156731	Wm. Duthie
Orange Blossom 34th	J. Law	Reformer 149560	Wm. Duthie
Orange Blossom 31st	J. Law	May Day 157372	James Bruce
Orange Blossom 29th	A. Cruickshank	Pride of the Isles 45274	A. Cruickshank

Calrossie Mercury, sire, Calrossie Control (255913) by Collynie Royal Leader 1492017, out of Calrossie Princess Mona (88108). Dam, Calrossie Augusta Opal (179796) by Calrossie Nonpareil Chief (262369), out of Calrossie Augusta Polly (140698).

Sultan Browndale, sire, Glenburn Field Marshal 1709714 by Edellyn Favorite 1430250, out of Clipper Countess 2d 1215702. Dam, Rookwood Golden Chain 5th 1712052 by Golden Browndale 1498465, out of Golden Lady 13th 1307124.

Glastullich Watchman, sire, Naemoor Jasper 1634156 by Saltoun Crusader (184883), out of Naemoor Stella 7th (52915). Dam, Bruiach Waterloo Pam (99298) by Naemoor Ian (209839), out of Bruiach Margery (64430).

• • •
EDELLYN LORD MERCURY is a dark roan son of the Perth Champion, that is impressive in his extreme smoothness and thickness of flesh. A real low set, blocky bull that is true in his lines, rugged and well balanced. He is out of one of our top Collynie cows sired by a grandson of Naemoor Jasper, and is a full brother to Edellyn Major Mercury that is siring such great calves in the herd of T. E. Gordon of Ohio.



Edellyn Lord Mercury

*A Mercury out of a
 Collynie bred cow.*

Bull

Lot 2

EDELLYN LORD MERCURY 2112049

Roan, calved March 29, 1942. Bred and owned by Thos. E. Wilson, Wilson, Illinois.

Dams	Breeders of Dams	Sires	Breeders of Sires
Spring Crocus 1773089 (Imp.)	Duthie Webster	Calrossie Mercury 1957318	J. MacGillivray
Crocus Crescent	W. T. Malcolm	Sunstone 1773001	J. & L. Durno
Tullibody Crocus 2d	Tullibody L. Co. Ltd.	Dunglass Oscar 1772986	W. Peterkin
Tullibody Crocus	Tullibody L. Co. Ltd.	Sealands Elixir 1773000	J. Shields
Garguston Crocus	R. S. McWilliam	Clipper Billy 1772972	G. B. Shields
Stoneytown Crocus 2d	R. S. McWilliam	Naemoor Cock Robin 1529918	J. J. Moubray
Albert Crocus 3d	Albert Agr'l Col.	Edgcote Flatterer 63334	Edgcote Sh'n Co.
Albert Crocus	Albert Agr'l Col.	Albert Meteor 1634144	Albert Agr'l Col.
Crescent 11th	John Wilson	Gay Morning 893019	Wm. Duthie
Crescent 7th	John Wilson	Sittyton Champion 324903	Wm. Duthie
		Prince of Fashion 136634	Wm. Duthie

Calrossie Mercury, sire, Calrossie Control (255913) by Collynie Royal Leader 1492017, out of Calrossie Princess Mona (88108). Dam, Calrossie Augusta Opal (179796) by Calrossie Nonpareil Chief (262369), out of Calrossie Augusta Polly (140698).

Sunstone, sire, Calrossie Engagement (228723) by Naemoor Jasper 1634156, out of Inverness Diamond Eliza 3d (76351). Dam, Secret Sensation (92510) by King Royal 1772991, out of Sittyton Secret 10th (2537).

Dunglass Oscar, sire, Aldie Roan Prince (204376) by Calrossie White Prince (179192), out of Phyllis Dare v64-1084E. Dam, Orange Blossom 33d (6679) by Collynie Star 951412, out of Orange Blossom 19th v57-1048E.



Edellyn Marcus Mercury

● ● ●

EDELLYN MARCUS MERCURY
(Twin) See opposite page. Seldom, if ever, has there been such a remarkable good pair of twin bulls offered for sale. Out of an International first prize winning dam, with a grandam that was the top of our 1938 sale and the third dam the Imp. Collynie cow; and sired by Calrossie Mercury, these bulls are backed by the very best of individuality and breeding. This calf is so extremely short legged and well balanced that he will impress you as one of the best in the sale.

*A Mercury that has
Everything to Recommend him.*

Lot 3

Bull

EDELLYN MARCUS MERCURY 2140736 (Twin)

Roan, calved June 26, 1942. Bred and owned by Thos. E. Wilson, Wilson, Illinois.

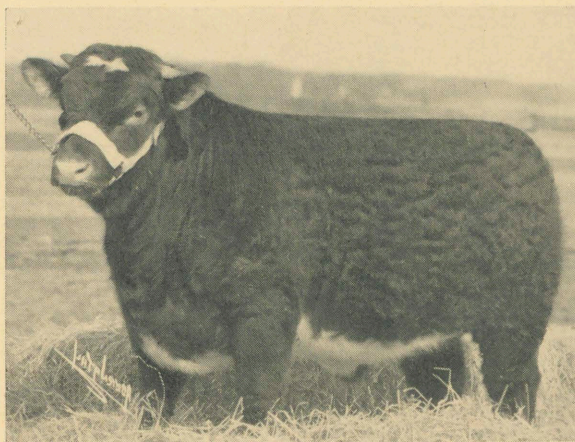
Dams	Breeders of Dams	Sires	Breeders of Sires
1965833		Calrossie Mercury 1957318	J. MacGillivray
Marellbar Golden Drop	Thos. E. Wilson	Brawith Count 1846144	David Douglas
Edellyn Golden Drop	Thos. E. Wilson	Sultan Browndale 1772330	Thos. E. Wilson
Pure Golden Drop (Imp.)	Duthie Webster	Golden Knight 1772989	H. M. Duncan
Royal Golden Drop 12th	H. M. Duncan	Balcairn Reliance 1772968	F. L. Wallace
Royal Golden Drop 2d	H. M. Duncan	Kingston of Edgcote	Edgcote Sh'n. Co.
Royal Golden Drop	Stephen Mitchell	Collynie King Royal 672000	Wm. Duthie
Boquhan Pure Gold	Stephen Mitchell	Gold Mint 632569	Wm. Duthie
Pure Gold	Wm. Duthie	Royal Edward 247838	Wm. S. Marr
Collynie Golden Drop	Wm. Duthie	Lovat Champion 157617	Lord Lovat
Golden Drop 11th	S. Campbell, Est.	Emancipator 130854	A. Robertson

Calrossie Mercury, sire, Calrossie Control (255913) by Collynie Royal Leader 1492017, out of Calrossie Princess Mona (88108). Dam, Calrossie Augusta Opal (179796) by Calrossie Nonpareil Chief (262369), out of Calrossie Augusta Polly (140698).

Brawith Count, sire, Brawith Boy 1836058 by Collynie Democrat (243063), out of Schivas Bonnie Bud (116272). Dam, Morning Blossom 22d 1846145 by Cruggleton Bugler 1831196, out of Morning Blossom 17th =225348=.

Sultan Browndale, sire, Glenburn Field Marshal 1709714 by Edellyn Favorite 1430250, out of Clipper Countess 2d 1215702. Dam, Rookwood Golden Chain 5th 1712052 by Golden Browndale 1498465, out of Golden Lady 13th 1307124.

• • •
EDELLYN MARCO MERCURY
 (Twin) see opposite page. This great pair of calves are out of the same dam as Edellyn Convoy Command, one of our top bulls, a year ago, selling to J. A. Collier and son of Oklahoma. This most certainly is one of the great calves that has been sold in years. His remarkable balance, his superb type and the extreme thickness of hind quarter stamp him as a leading contender for top honors. With such quality in the dam, grandam, and great granddam and their respective sires, no better background could be found for a herd bull.



Edellyn Marco Mercury

*A Mercury that would
 be hard to beat at any show.*

Bull

Lot 4

EDELLYN MARCO MERCURY 2140737 (Twin)

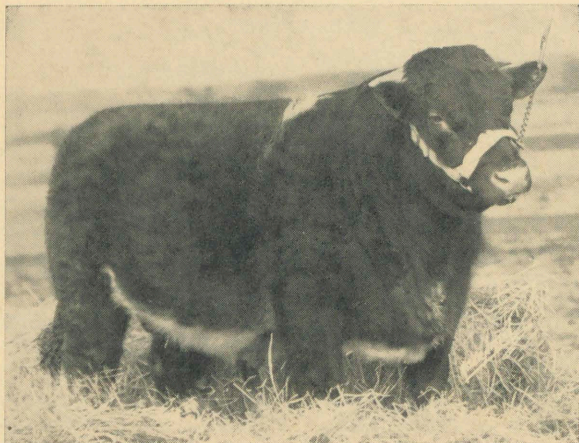
Roan, calved June 26, 1942. Bred and owned by Thos. E. Wilson, Wilson, Illinois.

Dams	Breeders of Dams	Sires	Breeders of Sires
	1965833	Calrossie Mercury 1957318	J. MacGillivray
Marellbar Golden Drop	Thos. E. Wilson	Brawith Count 1846144	David Douglas
Edellyn Golden Drop	Thos. E. Wilson	Sultan Browndale 1772330	Thos. E. Wilson
Pure Golden Drop (Imp.)	Duthie Webster	Golden Knight 1772989	H. M. Duncan
Royal Golden Drop 12th	H. M. Duncan	Balcairn Reliance 1772968	F. L. Wallace
Royal Golden Drop 2d	H. M. Duncan	Kingston of Edgcote	Edgcote Sh'n. Co.
Royal Golden Drop	Stephen Mitchell	Collynie King Royal 672000	Wm. Duthie
Boquhan Pure Gold	Stephen Mitchell	Gold Mint 632569	Wm. Duthie
Pure Gold	Wm. Duthie	Royal Edward 247838	Wm. S. Marr
Collynie Golden Drop	Wm. Duthie	Lovat Champion 157617	Lord Lovat
Golden Drop 11th	S. Campbell, Est.	Emancipator 130854	A. Robertson

Calrossie Mercury, sire, Calrossie Control (255913) by Collynie Royal Leader 1492017, out of Calrossie Princess Mona (88108). Dam, Calrossie Augusta Opal (179796) by Calrossie Nonpareil Chief (262369), out of Calrossie Augusta Polly (140698).

Brawith Count, sire, Brawith Boy 1836058 by Collynie Democrat (243063), out of Schivas Bonnie Bud (116272). Dam, Morning Blossom 22d 1846145 by Cruggleton Bugler 1831196, out of Morning Blossom 17th =225348=.

Sultan Browndale, sire, Glenburn Field Marshal 1709714 by Edellyn Favorite 1430250, out of Clipper Countess 2d 1215702. Dam, Rookwood Golden Chain 5th 1712052 by Golden Browndale 1498465, out of Golden Lady 13th 1307124.



Edellyn Premium Mercury



EDELLYN PREMIUM MERCURY, is a bulky, soggy kind of a bull with a great spread of rib, level in his top and carries out extremely square at the rump, and has a very full quarter. This calf will impress you with his ruggedness and bone and strong head. Out of a very thick fleshed red cow that through her beautiful Rosewood pedigree traces back to the great Rosewood 86th.

*A Mercury with Tremendous
Thickness of Hindquarter.*

Lot 5

Bull

EDELLYN PREMIUM MERCURY 2126865

Roan, calved May 18, 1942. Bred and owned by Thos. E. Wilson, Wilson, Illinois.

Dams

Rosewood 124th 1913833
Rosewood 123d
Rosewood 122d
Rosewood 120th
Crestmead Rosewood B.
Rosewood 87th
Rosewood 86th (Imp.)
Rosewood 81st
Rosewood 45th
Rosewood 27th

Breeder's of Dams

C. F. Curtiss
J. H. Degginger
Jos. Miller & Sons
Bellows Bros.
W. A. Betteridge
Carpenter & Ross
Geo. Walker
Jas. Bruce
Jas. Bruce
Jas. Bruce

Sires

Calrossie Mercury 1957318
Royal Regent 2d 1717475
Fancy Marshal 1248123
Villager's King 576159
Parkdale Baron 410363
Orange Model 317228
Whitehall Count 209775
Pride of Day 203941
Waverley 136405
Banadullae 149524
Duke of Edinburgh 130843

Breeder's of Sires

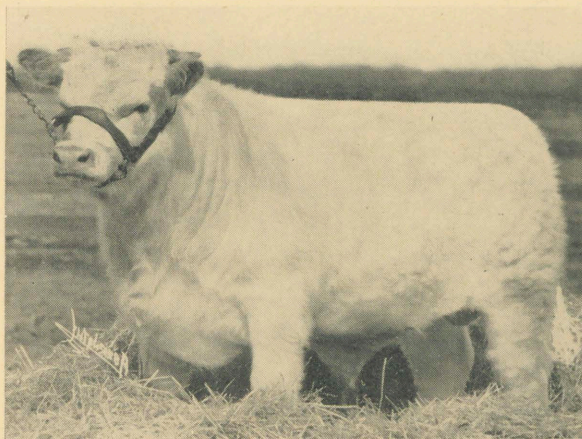
J. MacGillivray
C.F. Curtiss
Tomson Bros.
Uppermill Farm
Bellows Bros.
W. A. Betteridge
E. S. Kelly
Wm. Duthie
A. Strachan
Jas. Bruce
Jas. Bruce

Calrossie Mercury, sire, Calrossie Control (255913) by Collynie Royal Leader 1492017, out of Calrossie Princess Mona (88108). Dam, Calrossie Augusta Opal (179796) by Calrossie Nonpareil Chief (262369), out of Calrossie Augusta Polly (140698).

Royal Regent 2d, sire, Rookwood Regent 1399826 by Lavender Toft 1053384, out of Rookwood Butterfly 2d 840705. Dam, Rookwood Golden Chain 3d 1645485 by Golden Browndale 1498465, out of Golden Lady 13th 1307124.

Fancy Marshal, sire, Marshal's Crown 678827 by Village Marshal 427572, out of Marigold 3d 159480. Dam, Fancy 23d 755078 by Beaver Creek Sultan 352456, out of Fancy 19th 201281.

• • •
EDELLYN PEERLESS MERCURY is a full brother to the Sensational Edellyn Champion Mercury, purchased at the top of our last years sale by Sni-A-Bar Farms and who has developed into one of the greatest bulls of the breed. Edellyn Peerless Mercury has every qualification to develop along the same lines. His faultless and near perfect form, his great head and the best pedigree in America, stamp him as the one they have got to beat.



Edellyn Peerless Mercury

*A Mercury and a full brother
to Edellyn Campeon Mercury.*

Bull

Lot 6

EDELLYN PEERLESS MERCURY 2129645

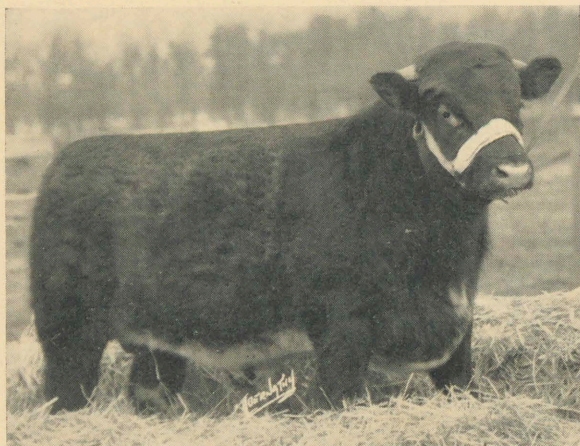
White, calved June 27, 1942. Bred and owned by Thos. E. Wilson, Wilson, Illinois.

Dams	Breeders of Dams	Sires	Breeders of Sires
Collynie Princess 51st (Imp.)	Duthie Webster	Calrossie Mercury 1957318	J. MacGillivray
Collynie Princess 45th	Duthie Webster	Bapton Boxing Day 1772969	C. H. E. Chubb
Collynie Princess 41st	Wm. Duthie, Est.	Collynie Royal Leader	Duthie Webster
Collynie Princess 25th	Wm. Duthie	Max of Cluny 769878	Lady G. Cathcart
Collynie Princess 22d	Wm. Duthie	Knight of the Thistle 769877	Wm. Duthie
Collynie Princess 12th	Wm. Duthie	Danesfield Storm King 577672	R. W. Hudson
Collynie Princess 4th	Wm. Duthie	Pride of Avon 311139	C. H. Joliffe
Collynie Princess	Wm. Duthie	Silver Crest 317107	W. S. Marr
Pride of the Dairy 2d	W. S. Marr	Scottish Archer 117301	A. Cruickshank
Princess Royal 31st	W. S. Marr	Royal George 184978	W. S. Marr
		Lord Raglan 99225	A. Scott

Calrossie Mercury, sire, Calrossie Control (255913) by Collynie Royal Leader 1492017, out of Calrossie Princess Mona (88108). Dam, Calrossie Augusta Opal (179796) by Calrossie Nonpareil Chief (262369), out of Calrossie Augusta Polly (140698).

Bapton Boxing Day, sire, Roan Robin (202241) by Naemoor Cock Robin 1529918, out of Augusta's Pride 2d (42627). Dam, Princess Alice (71907) by Cluny Prince Regent (179639), out of Princess Agnes v65-1202E.

Collynie Royal Leader, sire, Balcairn White Eagle 1259318 by Collynie Golden Knight (135819), out of Edgcote White Mabel v61-722E. Dam, Eliza Lass v63-1226E by Masterstroke 650634, out of Eliza Lady 1773033.



Edellyn Noble Mercury

● ● ●
EDELLYN NOBLE MERCURY is another son of Calrossie Mercury out of an outstanding daughter of the International Grand Champion Sultan Browndale. This calf is very close to ground, has good width and depth of body, plenty of bone and has a real head. He comes from a great producing family having the same grandam as Edellyn Orange Blossom 18th, one of the extreme tops in the Miles of View herd.

*A Mercury that's Tops
 as to Conformation and Breeding.*

Lot 7

Bull

EDELLYN NOBLE MERCURY 2129676

Roan, calved April 26, 1942. Bred by Allendale Farm, Libertyville, Illinois; calved property of Thos. E. Wilson, Wilson, Illinois.

Dams	Breeders of Dams	Sires	Breeders of Sires
	1998433	Calrossie Mercury 1957318	J. MacGillivray
Edellyn Orange Blossom 37th	Thos. E. Wilson	Sultan Browndale 1772330	Thos. E. Wilson
Cambus Apple Blo. (Imp.)	Alexander & Addie	Calrossie Rangefinder	J. MacGillivray
Apple Blossom 11th	Alexander & Addie	Calrossie President 1558533	J. MacGillivray
Apple Blossom 7th	John Alexander	Edgcote Masterpiece	Edgcote Sh'n. Co.
Apple Blossom	John Alexander	Doune Diamond 2d 992009	Earl of Moray
Almond Blossom	A. Robertson	Victor Royal 592838	J. Durno
Lyndedoch Blossom	J. Durno	Lord Lynedoch 206982	J. Durno
Crimson Blossom	J. Durno	Lord Douglas 132003	Wm. Duthie
Cherry Blossom	J. Durno	Sittyton Fame 131992	A. Cruickshank
Chief Blossom	W. Duthie	Border Chief 58562	W. S. Marr

Calrossie Mercury, sire, Calrossie Control (255913) by Collynie Royal Leader 1492017, out of Calrossie Princess Mona (88108). Dam, Calrossie Augusta Opal (179796) by Calrossie Nonpareil Chief (262369), out of Calrossie Augusta Polly (140698).

Sultan Browndale, sire, Glenburn Field Marshal 1709714 by Edellyn Favorite 1430250, out of Clipper Countess 2d 1215702. Dam, Rookwood Golden Chain 5th 1712052 by Golden Browndale 1498465, out of Golden Lady 13th 1307124.

Calrossie Rangefinder, sire, White Prince 1634159 by Cupbearer of Collynie 548990, out of Blood Royal 2d 1753598. Dam, Butterfly Bee v65-936E by Millhills Rothes King 770527, out of Aldie Butterfly v63-984E.



EDELLYN LOYAL MERCURY is the product of mating a Perth champion with a daughter of an International Grand Champion. This calf is as smooth and full of meat as any bull ever sold. Remarkably straight in his lines, deep bodied and close to the ground. He will please those that want them, smooth in the shoulder, good at the tail head and with a full heavy quarter. Collynie Fairy Flower, the imported cow, was one of the top cows ever to come from Scotland.



Edellyn Loyal Mercury

*A Mercury out of a daughter
of the International Grand
Champion.*

Bull

Lot 8

EDELLYN LOYAL MERCURY 2126863

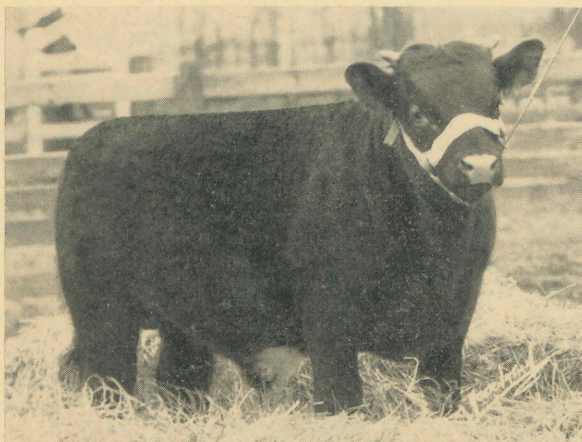
Red, calved May 21, 1942. Bred and owned by Thos. E. Wilson, Wilson, Illinois.

Dams	Breeders of Dams	Sires	Breeders of Sires
1916788		Calrossie Mercury 1957318	J. MacGillivray
Edellyn Fairy Flower 4th	Thos. E. Wilson	Sultan Browndale 1772330	Thos. E. Wilson
Collynie Fairy Flower (Imp.)	Duthie Webster	Rosehaugh Mandarin	Mrs. L. M. A. Fletch
Menie Lady Rothes	Wm. Angus	Collynie Lord Nonpareil 1772982	Wm. Duthie
Lady Rothes 5th	John Gill	Cullisse Royalist 752428	J. Gordon
Lady Rothes	John Gill	Strowan Christopher 719041	C. H. G. Stirling
Collynie Pride 4th	Wm. Duthie	Merry Stamp 410884	H. H. Smiley
Collynie Pride 2d	Wm. Duthie	Scottish Fancy 157741	Wm. S. Marr
Beaufort Pride 4th	Lord Lovat	Royal Star 151795	J. L. Reid
Beaufort Pride	Lord Lovat	Proud Duke 141840	Wm. Duthie
Queen of Rothes 2d	J. L. Reid	Knickerbocker 61392	Duke of Buccleuch

Calrossie Mercury, sire, Calrossie Control (255913) by Collynie Royal Leader 1492017, out of Calrossie Princess Mona (88108). Dam, Calrossie Augusta Opal (179796) by Calrossie Nonpareil Chief (262369), out of Calrossie Augusta Polly (140698).

Sultan Browndale, sire, Glenburn Field Marshal 1709714 by Edellyn Favorite 1430250, out of Clipper Countess 2d 1215702. Dam, Rookwood Golden Chain 5th 1712052 by Golden Browndale 1498465, out of Golden Lady 13th 1307124.

Rosehaugh Mandarin, sire, Cluny Mandarin (214630) by Brawith Chieftain (187661), out of Gainford Beauty 3d v63-873E. Dam, Rosehaugh Clipper 12th (73552) by Notlaw Luck (138276), out of Rosehaugh Clipper 2d (2926).



Edellyn Bugler Command

**EDELLYN BUGLER COMMAND**

is a full brother to the \$1100 Edellyn Orange Blossom 38th that sold in our 1941 sale to Allendale Farms. Here is a real chunk of a calf that will be a popular choice on sale day. Faultless color, extremely close to the ground, short and compactly made, and with a grand head. He will go out and breed them typy. Here is a son of Edellyn Command that will get the job done.

*A Command that will breed them
short legged, compact and the
right color.*

Lot 9**Bull****EDELLYN BUGLER COMMAND 2140729**

Red, calved August 16, 1942. Bred and owned by Thos. E. Wilson, Wilson, Illinois.

Dams	Breeders of Dams	Sires	Breeders of Sires
	1874950	Edellyn Command	2000000
Orange Blossom 21st	Jas. Douglas & Sons	Cruggleton Bugler 1831196	C. A. Linzee Gordon
Orange Blossom 14th	Jas. Douglas & Sons	Browndale Coronet 1488771	A. J. Marshall
Congalton Orange Blossom (Imp.)	J. G. Scott	Newton Royal Beau	Jas. Douglas
Balthayock Orange Blsm. 4th	R. W. Will	Edgcote Watson 1653007	A. T. Gordon, Est.
Sweet Orange	G. Anderson	Strowan 551715	Edgcote Sh'n. Co.
Orange Flower	G. Anderson	Merry Minstrel 323991	C. H. G. Stirling
Cherry Bud	J. Gilmour	Braw Duke 157581	Wm. Duthie
Cherry Blossom	T. Lawson	Cherry Shoot 151726	J. D. Fletcher
Orange Jelly 3d	J. Drummond	Lord of Alabama 150975	G. Torrance
Orange Jelly 2d	J. Drummond	Baron of the Isles 151713	Earl of Dunmore
			A. Cruickshank

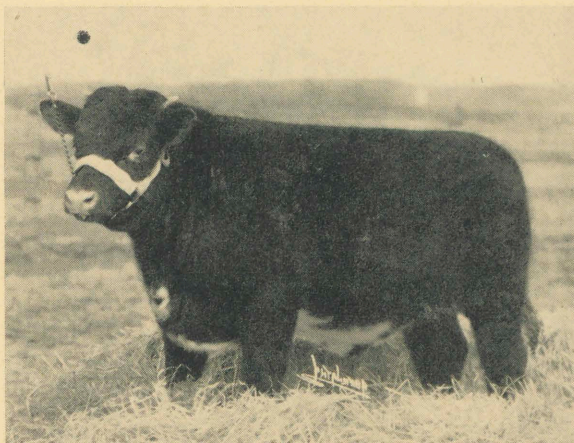
Edellyn Command, sire, Calrossie Command (275428) by Calrossie Control (255913), out of Calrossie Cynthia (150436). Dam, Cluny Rosewood 33d 1917362 by Cluny Sirdar Augustus (262734), out of Cluny Rosewood 26th (158083).

Cruggleton Bugler, sire, Lutwyche Grafter 1529910 by Lutwyche Cloudburst (182815), out of Eliza Lady 3d (31574). Dam, Illona Broadhooks (76839) by Champion of Ireland 1482257, out of Broadhooks Cameo v65-954E.

Browndale Coronet, sire, Browndale Count 1156438 by Browndale 334947, out of Morning Blossom 2d 1023473. Dam, Willow Bank Jilt 1488776 by Browndale 334947, out of Riverview Jilt 3d 504043.

● ● ●

EDELLYN DOUBLE MERCURY is sired by Edellyn Golden Mercury, the \$4200 son of Calrossie Mercury and out of one of the Perth Champion's outstanding daughters. This compact, good headed smooth youngster is a herd bull prospect for the best herds in the country. He is absolutely faultless in conformation and he comes from the very best of imported breeding. Here is a real one to develop into your next herd sire.



Edellyn Double Mercury

*A grand son of Mercury
that would win at any show.*

Bull

Lot 10

EDELLYN DOUBLE MERCURY 2140734

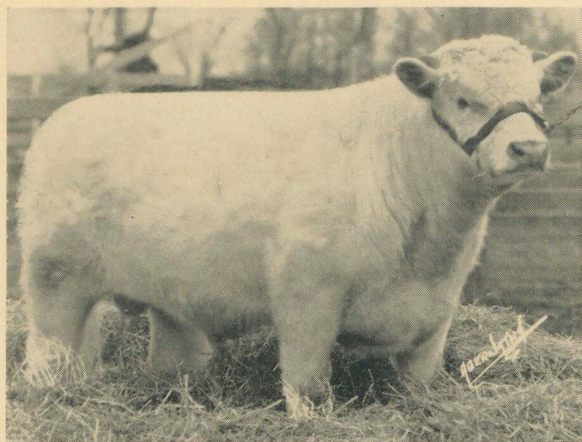
Red, calved September 1, 1942. Bred and owned by Thos. E. Wilson, Wilson, Illinois.

Dams	Breeders of Dams	Sires	Breeders of Sires
		2024600	
Ed. Broadhooks 13th 2024081	Thos. E. Wilson	Edellyn Golden Mercury	Thos. E. Wilson
Collynie Broadh. 12th (Imp.)	Duthie Webster	Calrossie Mercury 1957318	J. MacGillivray
Stella 11th	Mrs. Duncan Stewart	Bapton Boxing Day 1772969	C. H. E. Chubb
Stella 7th	Duncan Stewart	MillhillsDiamond	Mrs. Duncan Stewart
Stella 3d	Duncan Stewart	Collynie Bright Star 750097	Wm. Duthie
Stella 2d	Duncan Stewart	Golden Gift 226585	W. S. Marr
Stella	Lord Lovat	Evening Star 180002	A. Robertson
Rose of Underley 2d	Lord Lovat	Royal Star 151794	J. L. Reid
Rose of Undeley	Lord Lovat	Lord Violet 144899	Wm. Duthie
Beaufort Rose 3d	Lord Lovat	Star of Undeley 144843	G. Inglis
		Duke of Beaufort 141833	Earl of Dunmore

Edellyn Golden Mercury, sire, Calrossie Mercury 1957318 by Calrossie Control (255913), out of Calrossie Augusta Opal (179796). Dam, Lavender 70th 1713728 by Browndale Goldspur 1464101, out of Lavender Queen 5th 1348512.

Calrossie Mercury, sire, Calrossie Control (255913) by Collynie Royal Leader 1492017, out of Calrossie Princess Mona (88108). Dam, Calrossie Augusta Opal (179796) by Calrossie Nonpareil Chief (262369), out of Calrossie Augusta Polly (140698).

Bapton Boxing Day, sire, Roan Robin (202241) by Naemoor Cock Robin 1529918, out of Augusta's Pride 2d (42627). Dam, Princess Alice (71907) by Cluny Prince Regent (179639), out of Princess Agnes v65-1202E.



Edellyn Gay Mercury

• • •

EDELLYN GAY MERCURY is a full brother to Edellyn Clipper 33d, our prize winning summer yearling of 1942. This good headed, thick and deep bodied son of Calrossie Mercury is exceptionally well bred, having in his pedigree the most outstanding Browndale bulls ever used. Edellyn Gay Mercury has the conformation and character to make a great breeding bull and we predict that he will be one.

*A Mercury with a Browndale
Count background.*

Lot 11

Bull

EDELLYN GAY MERCURY 2126862

White, calved May 20, 1942. Bred and owned by Thos. E. Wilson, Wilson, Illinois.

Dams	Breeders of Dams	Sires	Breeders of Sires
Brawith Clipper 1941447	Jas. Douglas & Sons	Calrossie Mercury 1957318	J. MacGillivray
Glenburn Clipper 2d	F. H. Deacon	Brawith Boy 1836058	Hugh S. Black
Edellyn Clipper 8th	Thos. E. Wilson	Glenburn Coronet =209576=	F. H. Deacon
Edellyn Clipper 3d	Thos. E. Wilson	Browndale Standard 1518814	Thos. E. Wilson
Vaneth Clipper	Carpenter & Ross	Browndale Count 1156438	J. Douglas
Pine Grove Clipper 19th	W. C. Edwards & Co.	Maxwalton Monarch 699471	Carpenter & Ross
Pine Grove Clipper 5th	W. C. Edwards & Co.	Prince of Orange 306633	W. C. Edwards & Co.
Pine Grove Clipper	W. C. Edwards & Co.	British Knight 160052	W. C. Edwards & Co.
Sittyton Clipper 2d (Imp.)	Wm. Duthie	Knight of Lancaster 116172	Wm. Duthie
Cluster Rose	A. Cruickshank	William of Orange 95736	A. Cruickshank
		Gondolier 98287	A. Cruickshank

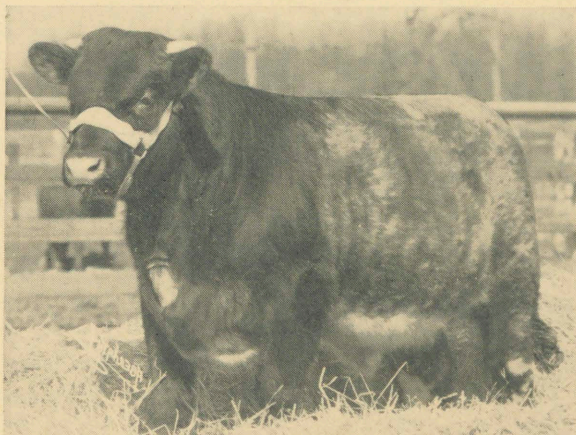
Calrossie Mercury, sire, Calrossie Control (255913) by Collynie Royal Leader 1492017, out of Calrossie Princess Mona (88108). Dam, Calrossie Augusta Opal (179796) by Calrossie Nonpareil Chief (262369), out of Calrossie Augusta Polly (140698).

Brawith Boy, sire, Collynie Democrat (243063) by Baron Nonsuch 1551028, out of Dainty Belle (8920). Dam, Schivas Bonnie Bud (116272) by Collynie Barnone (222200), out of Schivas Brawith Bud (83288).

Glenburn Coronet, sire, Edellyn Mercury 1518815 by Browndale Archer 1406824, out of Greenwood Bessie 2d 1335190. Dam, Edellyn Beauty 3d 1464110 by Browndale Count 1156438, out of Larbert Beauty 1219186.

• • •

EDELLYN LEGION MERCURY is an imported heifer's first calf. She is by a son of Calrossie Conquest, a second prize winner at Perth, and a full brother to the great Cluny stock bull, Calrossie Command. Conquest sold for 2000 gns. in the Argentine. Collynie Red Prince was a full brother to Collynie Royal Princess, champion female at the Royal in 1930. Millhills Rover was a first prize winner at Perth and sold for 2000 gns. in the Argentine. Edellyn Legion Mercury is not only one of the very best bred bulls in the sale but will impress you sale day for the thick, chunky, good headed and good quartered bull that he is.



Edellyn Legion Mercury

*A Mercury from the best of
imported breeding.*

Bull

Lot 12

EDELLYN LEGION MERCURY 2142460

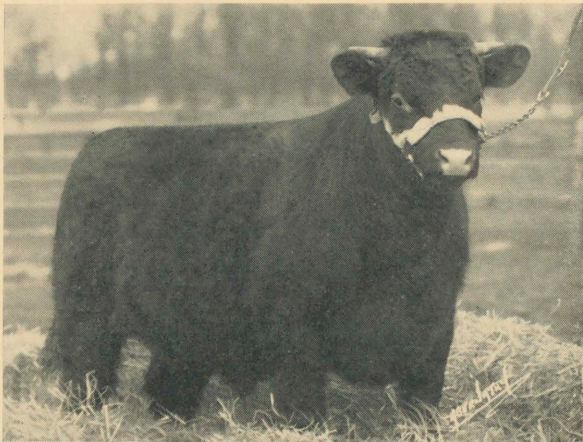
Roan, calved August 23, 1942. Bred and owned by Thos. E. Wilson, Wilson, Illinois.

Dams	Breeders of Dams	Sires	Breeders of Sires
	(Imp.)		
Pitpointie Golden Drop 23d	R. L. P. Duncan	Calrossie Mercury 1957318	J. MacGillivray
Pitpointie Golden Drop 14th	R. L. P. Duncan	Pitpointie Thistle	Robert L. P. Duncan
Pitpointie Golden Drop 3d	R. L. P. Duncan	Collynie Red Prince (243076)	D. Webster
Pitpointie Golden Drop	R. L. P. Duncan	Millhills Rover (174130)	Mrs. D. Stewart
Royal Golden Drop 4th	H. M. Duncan	Boquhan Rothes King 1558532	S. Mitchell
Royal Golden Drop	S. Mitchell	Boquhan Pride (111114)	S. Mitchell
Boquhan Pure Gold	S. Mitchell	Collynie King Royal 67200	W. Duthie
Pure Gold	Wm. Duthie	Gold Mint 632569	W. Duthie
Collynie Golden Drop	Wm. Duthie	Royal Edward 247838	W. S. Marr
Golden Drop 11th	S. Campbell, Est.	Lovat Champion 157617	Lord Lovat
		Emancipator 130854	A. Robertson

Calrossie Mercury, sire, Calrossie Control (255913) by Collynie Royal Leader 1492017, out of Calrossie Princess Mona (88108). Dam, Calrossie Augusta Opal (179796) by Calrossie Nonpareil Chief (262369), out of Calrossie Augusta Polly (140698).

Pitpointie Thistle, sire, Calrossie Conquest (284420) by Calrossie Control (255913), out of Calrossie Cynthis (150436). Dam, Pitpointie Princess Royal 10th (176937), by Beaufort Legion (255432), out of Pitpointie Princess Royal 4th (147771).

Collynie Red Prince, sire, Quetta (218391) by Quartermaster (132925), out of Blythesome 43d (38513). Dam, Collynie Princess 45th 1773023 by Collynie Royal Leader 1492017, out of Collynie Princess 41st 1726759.



Edellyn Favorite Leader

• • •

EDELLYN FAVORITE LEADER, sired by the popular Lawton Favorite and out of a very choice red daughter of the All-American Junior Champion Raveni Leader, is a solid dark red and his ancestry should also guarantee his ability to reproduce his remarkably, blocky, compact, short legged form as well as his thick, mellow flesh. This sappy calf is highly recommended. Ivy Clipper, the grandam is recognized as one of the most valuable brood cows ever at Edellyn.

A son of Lawton Favorite out of a daughter of the All-American Junior Champion.

Lot 13

Bull

EDELLYN FAVORITE LEADER 2112047

Red, calved April 6, 1942. Bred by J. D. Allen, Libertyville, Illinois; calved property of Thos. E. Wilson, Wilson, Illinois.

Dams	Breeders of Dams	Sires	Breeders of Sires
Edellyn Clipper 22d 1880312	Thos. E. Wilson	Lawton Favorite 2009158	William Henderson
Ivy Clipper (Imp.)	A. J. Marshall	Raveni Leader 1680652	T. Dorsey Jones
Mullantean Clipper	Mrs. C. M. Kennedy	Lutwyche Challenger 1555172	R. Cornelius
Clipper Empress 3d	R. W. Bell	Newmills Augustus King 1558542	D. G. McKee
Montrave Empress	J. Gilmour	Lavender Victor 682116	Wm. Duthie
Esther 2d	G. Fortune	Royal Archer 654731	J. Gilmour
Esther	A. M. Gordon	Michigan 654619	W. S. Marr
Ruth	A. M. Gordon	Actor 139994	Wm. Duthie
Mercy	A. M. Gordon	Doctor A Duff 118693	J. Williamson
Charity 2d	A. Cruickshank	Lord Mayor 120025	A. Longmore
		Scotland's Pride (25100)	A. Cruickshank

Lawton Favorite, sire, Collynie State Express (286968) by Aldie Conqueror (261324), out of Collynie Eliza 16th (173580). Dam, Lawton Blossom 4th (188150), by Lawton Jamie (251936), out of Blossom's Princess (121936).

Raveni Leader, sire, Browndale Pilot 1653006 by Browndale Coronet 1488771, out of Congalton Orange Blossom 1653009. Dam, Raveni Beauty 4th 1594098 by Browndale Star 1368844, out of Doorless Beauty 1071040.

Lutwyche Challenger, sire, King William 1517882 by Balcairn White Eagle 1259318, out of Eliza Lass v63-1226E. Dam, Cudham Orange Blossom 7th (15576) by Cluny Sir Augustus 1015825, out of Orange Blossom 47th v63-750E.

• • •
EDELLYN SELECT MERCURY is one of the very choicest prospects of the entire lot. Study his picture—that near perfect head, that top line and that depth of body and that flank. Seen from the rear he will impress you with his width, smoothness at the hooks and a wonderful tail setting. Lots of bone and substance, he would be a certain winner at any show. His dam was one of the tops in the Miles-of-View Sale as a yearling.



Edellyn Select Mercury

A Mercury of perfect color, type, breeding and a real prospect.

Bull

Lot 14

EDELLYN SECRET MERCURY 2140741

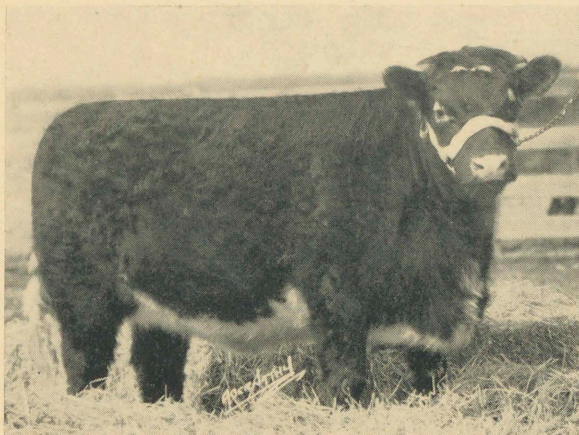
Red, calved September 2, 1942. Bred and owned by Thos. E. Wilson, Wilson, Illinois.

Dams	Breeders of Dams	Sires	Breeders of Sires
Winifred 20th 1942404	Miles of View Farms	Calrossie Mercury 1957318	J. MacGillivray
Winifred 19th	Tomson Bros.	Scotston Airman 1873325	Wm. B. Robertson
Winifred 8th	Tomson Bros.	Proud Archer 1593974	The Allen Cattle Co.
Winifred 7th	Bellows Bros.	Scottish Sultan 1025095	Tomson Bros.
Winifred May (Imp.)	Henry H. Kuper	Radium Reserve 576171	Bellows Bros.
Winifred 6th (Imp.)	Henry H. Kuper	Scottish Sentinel 353283	T. B. Earle
Winifred 4th	Wm. Duthie	Strowan Star 289990	C. H. G. Stirling
Winifred 2d	S. Campbell	Scottish Archer 117301	A. Cruickshank
Winifred	S. Campbell	Gravesend 98361	A. Cruickshank
Wimple 13th	S. Campbell	Vermont 78225	A. Cruickshank
		Golden Prince 64901	S. Campbell

Calrossie Mercury, sire, Calrossie Control (255913) by Collynie Royal Leader 1492017, out of Calrossie Princess Mona (88108). Dam, Calrossie Augusta Opal (179796) by Calrossie Nonpareil Chief (262369), out of Calrossie Augusta Polly (140698).

Scotston Airman, sire, Balcairn Boleta (241653) by Naemoor Crusader (225141), out of Balcairn Betty (92274). Dam, Augusta Esta (140940) by Collynie Royal Escort (229212), out of Augusta Fairy (88417).

Proud Archer, sire, Browndale Archer 1406824 by Browndale Count 1156438, out of Poplar Camelia 952145. Dam, Divide Maid 4th 1419895 by Richland Conqueror 1050333, out of Divide Maid 504774.



Edellyn Rosewood 34th

• • •

EDELLYN ROSEWOOD 34th is one of the most valuable females we have ever offered for sale. She is by Calrossie Mercury and out of an excellent daughter of Browndale Hero, and the next dam Imp. Cluny Rosewood 33d is the dam of Edellyn Command 2000000. This sweet headed typy heifer has everything that is required of a real foundation female and she is offered only as a very special attraction. This is the best family in the Cluny herd.

A daughter of Mercury from same ancestry as Edellyn Command.

Lot 15

Cow

EDELLYN ROSEWOOD 34th 2114663

Roan, calved February 6, 1942. Bred and owned by Thos. E. Wilson, Wilson, Illinois.

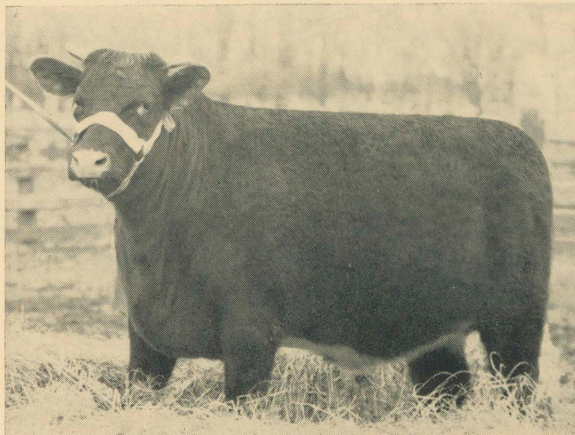
Dams	Breeders of Dams	Sires	Breeders of Sires
1984491		Calrossie Mercury 1957318	J. MacGillivray
Edellyn Rosewood 28th	Thos. E. Wilson	Browndale Hero 1580518	Thos. E. Wilson
Cluny Rose. 33d (Imp.)	C. A. Linzee Gordon	Cluny Sirdar Augustus	Lady G. Cathcart
Cluny Rosewood 26th	C. A. Linzee Gordon	Glastullich Sirdar 1719147	W. MacGillivray
Cluny Rosewood 5th	Lady G. Cathcart	Brawith Chieftain	K. P. MacGillivray
Cluny Rosewood	Lady G. Cathcart	President of the Mint 387170	D. Stewart
Rosewood 106th	A. T. Gordon	Lord Advocate 577175	A. T. Gordon
Rosewood 87th	T. F. Jamieson	Mountain Archer 149639	W. Duthie
Rosewood 72d	Jas. Bruce	Waverley 136405	A. Strachan
Rosewood 54th	Jas. Bruce	Cap-A-Pie 106717	Jas. Bruce
Rosewood 23d	Jas. Bruce	Duke of Edinburgh 130843	Jas. Bruce

Calrossie Mercury, sire, Calrossie Control (255913) by Collynie Royal Leader 1492017, out of Calrossie Princess Mona (88108). Dam, Calrossie Augusta Opal (179796) by Calrossie Nonpareil Chief (262369), out of Calrossie Augusta Polly (140698).

Browndale Hero, sire, Browndale Count 1156438 by Browndale 334947, out of Morning Blossom 2d 1023473. Dam, Edellyn Rosina 1310877 by Meadowbrook Count 1085325, out of Rosina 647434.

Cluny Sirdar Augustus, sire, Glastullich Sirdar 1719147 by Naemoor Jasper 1634156, out of Doune Butterfly (40161). Dam, Cluny Augusta 21st (71720) by Brawith Chieftain (187661), out of Cluny Augusta 12th 1590749.

• • •
EDELLYN PRINCESS ROYAL 20th is a half sister to Connor Prairie's Perth Champion, Royal Rothes, being sired by the same bull, and is out of a half sister to Edellyn Royal Leader, having been sired by Coldoch Sensation. Here is an imported heifer, the equal of which cannot be bought in Scotland carrying the same breeding as two of the best bulls in America. This is your opportunity to buy an imported female of proven ancestry.



Edellyn Princess Royal 20th

Imp. heifer by Calrossie Sweepstake out of a dam by Coldoch Sensation.

Cow

Lot 16

EDELLYN PRINCESS ROYAL 20th 2114798 (Imp.)

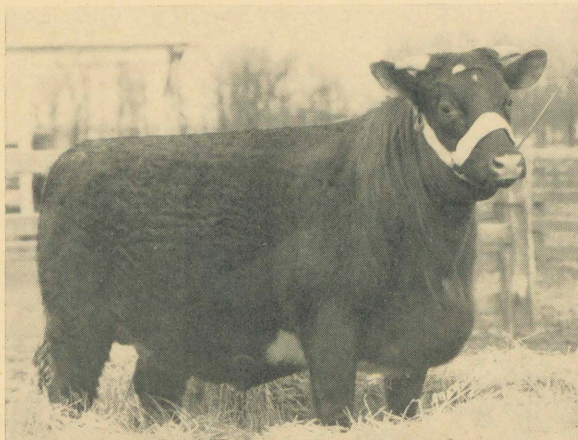
Red, calved January 1, 1942. Bred by W. McNair Snadden, Blair Drummond by Stirling, Stirlingshire, Scot. Imp. in dam October 26, 1941 by and calved property of Thos. E. Wilson, Wilson, Illinois.

Dams	Breeders of Dams	Sires	Breeders of Sires
		(290897)	
2084398		Calrossie Sweepstake	John MacGillivray
Coldoch Marina (Imp.)	W. McNair Snadden	Coldoch Sensation (275892)	W. M. Snadden
Aldie Princess Betty	Finley Macgillivray	Calrossie Upright (235702)	J. MacGillivray
Aldie Princess Mary	Finley MacGillivray	Naemoor Jasper 1634156	J. J. Moubray
Abbeymains Princess Royal 2d	T. Kirk	Stoneytown Challenger	A. S. McWilliam
Whittinghame Princess Royal	A. J. Balfour	Edgcote Sceptre 1026341	Edgcote Sh'n. Co.
Woodborough Prin. Royal 2d	F. B. Beauchamp	Adbolton Ruddy King 1599169	A. W. Hickling
Albert Princess Royal 5th	Albert A. College	Bapton Banner (85232)	J. Deane Willis
Princess Royal 100th	J. A. Horn	Border Raider (80530)	J. Wilson
Pride of the Dairy 3d	W. Duthie	Gravesend 98361	A. Cruickshank
Pride of the Dairy		William of Orange 95736	A. Cruickshank
Princess Royal 26th	W. S. Marr	Earl of Mar (47815)	W. S. Marr

Calrossie Sweepstake, sire, Calrossie Randolph (275440) by Calrossie Grand National (268893), out of Calrossie Miss Rosebud (160065). Dam, Calrossie Broadhooks Maggie (150434) by Collynie Royal Leader 1492017, out of Calrossie Broadhooks Pride (110124).

Coldoch Sensation, sire, Bapton Crocus Leader (261766) by Calrossie Ringleader (235690), out of Bapton Crocus 13th (116718). Dam, Aldie Rosemary (160049) by Calrossie Satisfaction (249387), out of Aldie Red Rose (120596).

Calrossie Upright, sire, Calrossie Excelsior (221730) by Naemoor Ian (209839), out of Lutwyche Wileen 2d (59815). Dam, Calrossie Jean Undine (76438) by Millhills Regalia 1504629, out of Una Undine v65-936E.



Edellyn Duchess Gloster 10th

• • •

EDELLYN DUCHESS GLOSTER 10th, by Edellyn Command is one of the top heifers to be sold anywhere. If you like them compact, thick made, smooth and close to the ground here is the heifer to buy. This branch of the Duchess of Glosters has gained its popularity by the superior quality of its females. This fine heifer is one of the best of the tribe.

*A daughter of Command and
a contender for top honors.*

Lot 17

Cow

EDELLYN DUCHESS GLOSTER 10th 2087428

Red, calved October 28, 1941. Bred and owned by Thos. E. Wilson, Wilson, Illinois.

Dams

Breeder of Dams Sires

Breeder of Sires

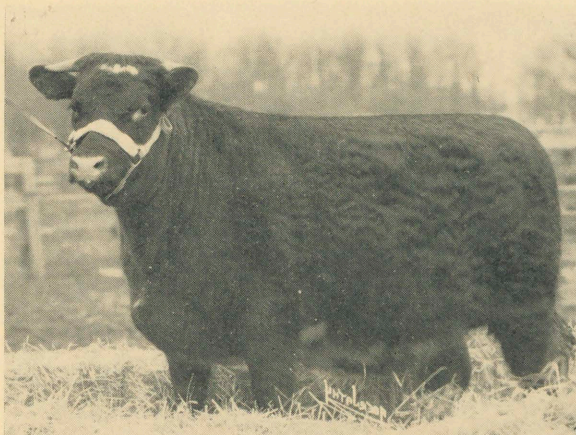
			2000000
	1592691	Edellyn Command	Chas. A. Linzee Gordon
50th Duchess of Gloster	Woodruff Farm	Maxwalton Clansman 2d	Carpenter & Ross
College Duchess 3d	Kans. St. Agr'l. Col.	Marauder 616972	Carpenter & Ross
College Duchess 2d	Kans. St. Agr'l. Col.	Matchless Dale 291609	Carpenter & Ross
College Duchess	Kans. St. Agr'l. Col.	Baron Marr 286261	F. O. Lowden
44th Duchess of Gloster	H. C. Stuart	Knight of the Thistle 108656	Luther Adams
35th Duch. of Gloster (Imp.)	Arthur Johnston	Northern Light 99701	A. Cruickshank
34th Duchess of Gloster	A. Cruickshank	Dunblane 65995	A. Cruickshank
Duchess of Gloster 21st	A. Cruickshank	Barmpton Prince 45247	A. Cruickshank
Duchess of Gloster 13th	A. Cruickshank	Grand Duke of Gloster	A. Cruickshank
Duchess of Gloster 12th	A. Cruickshank	Champion of England (17526)	A. Cruickshank

Edellyn Command, sire, Calrossie Command (275428) by Calrossie Control (255913), out of Calrossie Cynthia (150436). Dam, Cluny Rosewood 33d 1917362 by Cluny Sirdar Augustus (262734), out of Cluny Rosewood 26th (158083).

Maxwalton Clansman 2d, sire, Rodney 753273 by Sanquhar Dreadnought 680399, out of Rosetta 7th 753278. Dam, Maxwalton Clipper 11th 201399 by Maxwalton Renown 367543, out of Clarinda v64-665.

Marauder, sire, Revolution 388359 by Avondale 245144, out of Roan Rosebud 12th 59553. Dam, Maxwalton Mina 8th 176765 by Avondale 245144, out of Maxwalton Mina 2d 86601.

● ● ●
EDELLYN ROSEBUD 5th is just as good as her picture, and this wonderful daughter of Calrossie Mercury will make one of the outstanding matrons of the sale. We certainly recommend this heifer to those that want the best of individuality and old country breeding. She is out of a very low set, red imported Durno bred dam whose last daughter is one of the best cows in Kentucky.



Edellyn Rosebud 5th

A daughter of Mercury out of a great Imported Cow.

Cow

Lot 18

EDELLYN ROSEBUD 5th 2114662

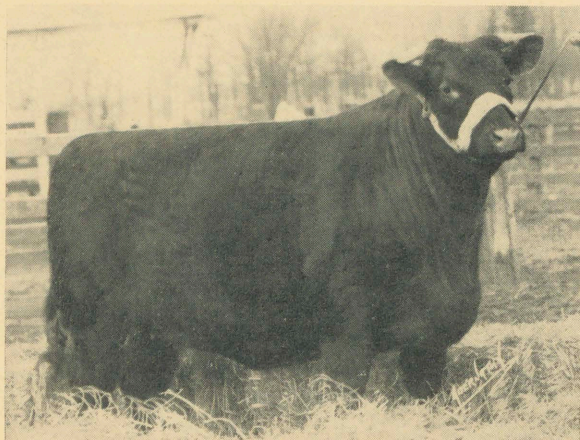
Roan, calved January 31, 1942. Bred and owned by Thos. E. Wilson, Wilson, Illinois.

Dams	Breeders of Dams	Sires	Breeders of Sires
Robina Rosebud (Imp.)	Jas. Durno	Calrossie Mercury 1957318	J. MacGillivray
Lynegar Rosebud 10th	John Robson, Jr.	Schivas Lord Ramsden 1772999	J. R. Burr
Lynegar Rosebud 6th	John Robson, Jr.	Cluny Lord Eric 1772974	Lady G. Cathcart
Lynegar Rosebud	John Robson, Jr.	Cluny Brilliant 1772973	Lady G. Cathcart
Rosebud A. 2d	Wm. Craigie	Strowan Clavehouse 992238	C. H. G. Stirling
Rosadora	A. Leslie	Golden Flash 324878	J. L. Reid
Roselite	A. Leslie	Clarence 650356	A. Leslie
Roan Rosebud 3d	A. Leslie	Count March 145543	J. Wilson
Roan Rosebud 2d	S. Campbell	Pride of Aberdeen 145550	G. Bruce
Roan Rosebud	S. Campbell	Gravesend 98361	A. Cruickshank
		Borough Member 64872	J. Bowman

Calrossie Mercury, sire, Calrossie Control (255913) by Collynie Royal Leader 1492017, out of Calrossie Princess Mona (88108). Dam, Calrossie Augusta Opal (179796) by Calrossie Nonpareil Chief (262369), out of Calrossie Augusta Polly (140698).

Schivas Lord Ramsden, sire, Collynie Barnone (222200) by Baron Nonsuch 1551028, out of Collynie Secret 14th (69070). Dam, Fernhill Miss Ramsden 2d (91623) by Rothiebrisbane Bulwark (202379), out of Tongswood Miss Ramsden (3500).

Cluny Lord Eric, sire, Brawith Chieftain (187661) by Millhills Regent 1253329, out of Cullisse Vinolia 11th v63-844E. Dam, Cluny Lady Eliza 2d (46787) by Cluny Regal Star 1270433, out of Eliza Max (12419).



Edellyn Rosewood 33d

• • •
EDELLYN ROSEWOOD 33d is out of the same dam as Edellyn Modest Mercury the \$4500 bull now at the head of the Curtiss Candy Company herd at Marengo, Illinois. This wonderful daughter of Edellyn Command is a real breeding prospect. She is out of a cow that was shown as a calf and was sired by an International Junior Champion, and the next four dams were also shown by their respective breeders.

A daughter of Command out of the same dam as the top bull of our 1941 sale.

Lot 19

Cow

EDELLYN ROSEWOOD 33d 2087434

Red, calved October 13, 1941. Bred and owned by Thos. E. Wilson, Wilson, Illinois.

Dams	Breeders of Dams	Sires	Breeders of Sires
		2000000	
Edellyn Rosewood 17th	1772341	Edellyn Command	Chas. A. Linzee Gordon
Winmoor Rosewood 4th	Thos. E. Wilson	Calrossie Lord Rothes	John MacGillivray
Ravendale Rosewood	W. H. Schendorf	Linwood Rodney 1020043	Carpenter & Ross
Rosewood 93d	John O. Pew & Son	Glaryford Augustus 716421	M. Dysart
Maxwalton Rosewood 6th	Carpenter & Ross	Revolution 388359	Carpenter & Ross
Rosewood 92d (Imp.)	Carpenter & Ross	Maxwalton Renown 367543	Carpenter & Ross
Rosewood 76th	W. D. Morrison	Golden Prince 306267	R. Copland
Rosewood 54th	J. Bruce	Waverley 136405	A. Strachan
Rosewood 23d	J. Bruce	Cap-A-Pie 106717	J. Bruce
Rosewood 13th	J. Bruce	Duke of Edinburgh 130843	J. Bruce
		Privy Seal 109647	A. Cruickshank

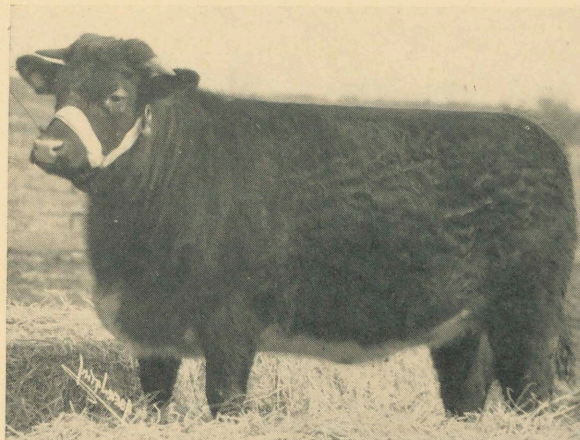
Edellyn Command, sire, Calrossie Command (275428) by Calrossie Control (255913), out of Calrossie Cynthia (150436). Dam, Cluny Rosewood 33d 1917362 by Cluny Sirdar Augustus (262734), out of Cluny Rosewood 26th (158083).

Calrossie Lord Rothes, sire, Royal Banker 1634157 by Naemoor Gaffer 1219127, out of Goldie 18th (64410). Dam, Inverness Queen Rothes 3d 1634174 by Adbolton King Tulip 1634143, out of Inverness Queen Rothes 1634173.

Linwood Rodney, sire, Rodney 753273 by Sanquhar Dreadnought 680399, out of Rosetta 7th 753278. Dam, Baroness Undine 794380 by Baron's Pride 306627, out of Nonpareil Undine 794391.

• • •

EDELLYN SECRET 4th is a very excellent daughter of Edellyn Command and out of the choicest of our four Glastullich Watchman by Naemoor Jasper, cows. Susanne is one of the smoothest, lowest set cows in America, and this great daughter by Command will be an ideal foundation female to found a Secret family. Note the Jameson, Durno and Duthie breeding.



Edellyn Secret 4th

*A Command out of a very excellent
Imported Durno Bred Dam.*

Cow

Lot 20

EDELLYN SECRET 4th 2112057

Roan, calved January 21, 1942. Bred and owned by Thos. E. Wilson, Wilson, Illinois.

Dams

Breeders of Dams Sires

Breeders of Sires

		2000000	
Susanne 1773092 (Imp.)	James Durno	Edellyn Command	Chas. A. Linzee Gordon
Sarcelle	J. & L. Durno	Glastullich Watchman	W. MacGillivray
Secrecy	James Durno	Collynie Crown Prince 1219846	Wm. Duthie
Secret Sadie	James Durno	Mesmerist 762960	Wm. Duthie
Secret Sylvia	James Durno	Collynie Chief 828942	Wm. Duthie
Sally 13th	T. F. Jamieson	Royal Mint 307807	Wm. Duthie
Sally 4th	T. F. Jamieson	Hero 613583	T. F. Jamieson
Sally 2d	T. F. Jamieson	Neil Cow 158852	T. F. Jamieson
Sally	T. F. Jamieson	Robin Hood 149643	A. Cruickshank
Sylvia	T. F. Jamieson	Darnlee 118629	A. Cruickshank
	T. F. Jamieson	Viscount 149647	T. F. Jamieson

Edellyn Command, sire, Calrossie Command (275428) by Calrossie Control (255913), out of Calrossie Cynthia (150436). Dam, Cluny Rosewood 33d 1917362 by Cluny Sirdar Augustus (262734), out of Cluny Rosewood 26th (158083).

Glastullich Watchman, sire, Naemoor Jasper 1634156 by Saltoun Crusader (184883), out of Naemoor Stella 7th (52915). Dam, Bruiach Waterloo Pam (99298) by Naemoor Ian (209839), out of Bruiach Margery (64430).

Collynie Crown Prince, sire, Max of Cluny 769878 by Dunglass Commodore 680169, out of Cecilia 9th v57-564E. Dam, Collynie Princess 25th v62-769E by Knight of the Thistle 769877, out of Collynie Princess 22d 1726757.

Lot 21

Cow

EDELLYN FLORA 5th 2114659

Roan, calved February 10, 1942. Bred and owned by Thos. E. Wilson, Wilson, Illinois.

Dams	Breeders of Dams	Sires	Breeders of Sires
	1847242	Calrossie Mercury 1957318	J. MacGillivray
Milky Way Flora 10th	Milky Way Farms	Collynie Royal Pilot 1726753	Duthie Webster
Collynie Flora 2d	Easton & Ward	Collynie Clipper Crest 1259323	Wm. Duthie
Cluny Flora 128th (Imp.)	Lady G. Cathcart	Captain Augustus 1259320	H. M. Duncan
Cluny Flora 111th	Lady G. Cathcart	Dunglass Commodore	W. & J. W. Peterkin
Cluny Flora 102d	Lady G. Cathcart	Fitzroy of Cluny 680170	Lady G. Cathcart
Cluny Flora 99th	Lady G. Cathcart	Lord Rector 346742	Wm. Duthie
Cluny Flora 72d	Lady G. Cathcart	Radnor of Cluny 175047	Lady G. Cathcart
Cluny Flora 64th	Lady G. Cathcart	Washington 141560	J. A. Gordon
Cluny Flora 2d	Lady G. Cathcart	Deas 150680	J. Gordon
Flora 20th	Mrs. Gordon	Lollius Booth 75977	J. Gordon

Calrossie Mercury, sire, Calrossie Control (255913) by Collynie Royal Leader 1492017, out of Calrossie Princess Mona (88108). Dam, Calrossie Augusta Opal (179796) by Calrossie Nonpareil Chief (262369), out of Calrossie Augusta Polly (140698).

Collynie Royal Pilot, sire, Rosehaugh Mandarin 1726754 by Cluny Mandarin (214630), out of Rosehaugh Clipper 12th (73552). Dam, Collynie Princess 48th 1726760 by Collynie Golden Key 1558536, out of Collynie Princess 41st 1726759.

Collynie Clipper Crest, sire, Marquis of Milhills 989081 by Cupbearer of Collynie 548-990, out of Countess of Luino v58-943E. Dam, Collynie Clipper 9th 1259361 by Masterstroke 650634, out of Collynie Clipper 6th 1259360.

Edellyn Flora 5th 2114659—Is a full sister to Edellyn Flora 4th, sold for \$725 in our 1942 sale to Allendale Farms. This well bred daughter of Calrossie Mercury is out of a quality dam by a son of Rosehaugh Mandarin. This excellent heifer with this great Cluny Flora pedigree will make an ideal purchase for establishing this family in your herd. This is a real opportunity and a real heifer to go with it.

Lot 22

Cow

EDELLYN GOLDEN CHAIN 5th 2126870

Roan, calved April 19, 1942. Bred and owned by Thos. E. Wilson, Wilson, Illinois.

Dams	Breeders of Dams	Sires	Breeders of Sires
		2000000	
		Edellyn Command	C. A. Linzee Gordon
Golden Damsel (Imp.)	A. J. Marshall	Cruggleton Patrician (229491)	A. J. Marshall
Golden Gift	A. J. Marshall	Lutwyche Challenger 1555172	R. Cornelius
Cudham Golden B. 9th	A. W. Maconochie, Est.	Cluny Sir Augustus 1015825	Lady G. Cathcart
Golden Bud 3d	H. M. Duncan	Beauty's Favourite (118928)	Wm. Duthie
Golden Bud 2d	H. M. Duncan	Boquhan Pride (111114)	S. Mitchell
Golden Bud	R. L. P. Duncan	Royal Charter (84585)	Wm. Duthie
Golden Dawn	Mr. Proctor	Prince of the Blood (96532)	Wm. Duthie
Golden Garnet	J. Deane Willis	Violet's Fame 78078	Wm. Duthie
Golden Gift	J. Deane Willis	Proud Duke of Gloster 155861	Wm. Duthie
Golden Geraldine	J. Deane Willis	Count Lavender 132575	Wm. Duthie

Edellyn Command, sire, Calrossie Command (275428) by Calrossie Control (255913), out of Calrossie Cynthia (150436). Dam, Cluny Rosewood 33d 1917362 by Cluny Sirdar Augustus (262734), out of Cluny Rosewood 26th (158083).

Cruggleton Patrician, sire, Balcairn Baronet (1482255) by Edgcote Baronet (136355), out of Edgcote Dazzle Queen v62-773E. Dam, Princess Christina v63-999E. by Broadhooks Diamond (124530), out of Princess Agnes v59-853E.

Lutwyche Challenger, sire, King William 1517882 by Balcairn White Eagle 1259318, out of Eliza Lass v63-1226E. Dam, Cudham Orange Blossom 7th (15576) by Cluny Sir Augustus 1015825, out of Orange Blossom 47th v63-750E.

Edellyn Golden Chain 5th 2126870—Is a full sister to Edellyn Golden Chain 4th, purchased in our 1942 sale by E. Arthur Ball of Indiana. She is out of a very good imported Marshall bred dam and the granddam is sired by a son of a full brother to Collynie Royal Leader. This is imported breeding at its best and this heifer will make a choice addition to any herd.

• • •

EDELLYN BROADHOOKS 16th is one of the choicest heifers that we have ever sold. She is tremendously deep, short coupled and close to the ground. Out of our great producing Broadhooks family, she has everything to recommend her. Out of one of the top Browndale Hero heifers and the grandam the Collynie cow, we don't see how this heifer can fail to give a good account of herself. These Broadhooks are all good milkers.



Edellyn Broadhooks 16th

*A daughter of Command from
Edellyn's Famous Broadhooks
Family.*

Cow

Lot 23

EDELLYN BROADHOOKS 16th 2087424

Red, calved September 20, 1941. Bred and owned by Thos. E. Wilson, Wilson, Illinois.

Dams	Breeders of Dams	Sires	Breeders of Sires
		2000000	
Edellyn Broadhooks 9th	1978831 Thos. E. Wilson	Edellyn Command	Chas. A. Linzee Gordon
Collynie Broadh. 12th (Imp.)	Duthie Webster	Browndale Hero 1580518	Thos. E. Wilson
Stella 11th	Mrs. Duncan Stewart	Bapton Boxing Day 1772969	C. H. E. Chubb
Stella 7th	Duncan Stewart	Millhills Diamond	Mrs. Duncan Stewart
Stella 3d	Duncan Stewart	Collynie Bright Star 750097	Wm. Duthie
Stella 2d	Duncan Stewart	Golden Gift 226585	W. S. Marr
Stella	Lord Lovat	Evening Star 1800C2	A. Robertson
Rose of Underley 2d	Lord Lovat	Royal Star 151794	J. L. Reid
Rose of Underley	Lord Lovat	Lord Violet 144899	Wm. Duthie
Beaufort Rose 3d	Lord Lovat	Star of Underley 144843	G. Inglis
		Duke of Beaufort 141833	Earl of Dunmore

Edellyn Command, sire, Calrossie Command (275428) by Calrossie Control (255913), out of Calrossie Cynthia (150436). Dam, Cluny Rosewood 33d 1917362 by Cluny Sirdar Augustus (262734), out of Cluny Rosewood 26th (158083).

Browndale Hero, sire, Browndale Count 1156438 by Browndale 334947, out of Morning Blossom 2d 1023473. Dam, Edellyn Rosina 1310877 by Meadow Brook Count 1085325, out of Rosina 647434.

Bapton Boxing Day, sire, Roan Robin (202241) by Naemoor Cock Robin 1529918, out of Augusta's Pride 2d (42627). Dam, Princess Alice (71907) by Cluny Prince Regent (179639), out of Princess Agnes v65-1202E.

Lot 24

Cow

EDELLYN ORANGE BLOSSOM 49th 2140746

Roan, calved July 3, 1942. Bred and owned by Thos. E. Wilson, Wilson, Illinois.

Dams	Breeders of Dams	Sires	Breeders of Sires
		2000000	
19th 1817445		Edellyn Command	C. A. Linzee Gordon
Edellyn Orange Blossom	Thos. E. Wilson	Raveni Leader 1680652	T. Dorsey Jones
Edellyn Orange Blossom 8th	Thos. E. Wilson	Balcain Regal Star 1558529	F. L. Wallace
Edellyn Orange Blossom 4th	Thos. E. Wilson	Browndale Count 1156438	Jas. Douglas
Max Orange Blossom 4th	Carpenter & Ross	Rodney 753273	C. H. Jolliffe
Orange Blossom 7th	W. C. Edwards & Co.	Royal Butterfly 432756	W. C. Edwards & Co.
Orange Blossom 4th	W. C. Edwards & Co.	Missie Champion 236025	W. C. Edwards & Co.
Orange Blossom 2d	W. C. Edwards & Co.	Marquis of Zenda 157854	Wm. S. Marr
Flora (Imp.)	Thos. F. Jamieson	Topsman 149645	S. Campbell
Flower of the Vale	J. Law	Fairfax Royal 159107	E. Cruickshank
Orange Blossom 34th	J. Law	Reformer 149560	Wm. Duthie

Edellyn Command, sire, Calrossie Command (275428) by Calrossie Control (255913), out of Calrossie Cynthia (150436). Dam, Cluny Rosewood 33d 1917362 by Cluny Sirdar Augustus (262734), out of Cluny Rosewood 26th (158083).

Raveni Leader, sire, Browndale Pilot 1653006 by Browndale Coronet 1488771, out of Congalton Orange Blossom 1653009. Dam, Raveni Beauty 4th 1594098 by Browndale Star 1368844, out of Doorless Beauty 1071040.

Balcain Regal Star, sire, Balcain Crescent 1558528 by Calrossie Ramsden Monarch (188134), out of Balcain Cherry (43745). Dam, Balcain Royal Bride 1558554 by Earl of Kingston 613050, out of Edgcote Royal Bride 1558572.

Edellyn Orange Blossom 49th 2140746—Is out of a very good breeding daughter of the All-American Junior Champion, Raveni Leader and sired by Edellyn Command. You can depend on this sweet, low set, typy heifer to retain her perfect form and develop into the kind of a cow that will be tops. All her immediate ancestors are right on the ground and have all been profitable cattle to own.

Lot 25

Cow

EDELLYN ROSEMARY 20th 2140748

Red, calved July 7, 1942. Bred and owned by Thos. E. Wilson, Wilson, Illinois.

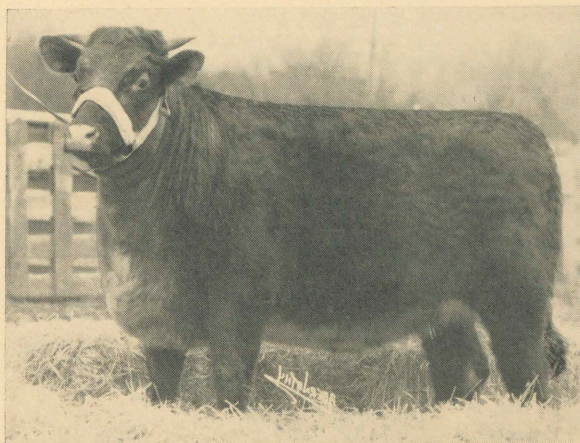
Dams	Breeders of Dams	Sires	Breeders of Sires
		2000000	
		Edellyn Command	C. A. Linzee Gordon
Anoka Rosemary 1908415	F. W. Harding	Phingask Bank Roll 1844925	George Dawson
Rosemary 117th	Milky Way Farms	Balmuchy Landlord 1719126	A. P. Gordon
Rosemary 116th	W. H. Miner	Lothian May Duke 993227	Earl of Rosebery
Rosemary 108th	W. H. Miner	Fond Memory 320270	F. W. Harding
Rosemary 105th (Imp.)	G. Bartlet	Red Rober 612508	G. Bartlet
Rosemary 101st	G. Bartlet	Pride of the Goldies 317091	Wm. Duthie
Rosemary 100th	W. Henderson	Elrington Samp 217853	R. & W. Henderson
Rosemary 96th	R. & W. Henderson	Recorder 612507	R. & W. Henderson
Rosemary 92d	G. Shepherd	Prince Palatine 135616	A. Cruickshank
Rosemary 55th	G. Shepherd	Kamouraska 182758	A. Scott

Edellyn Command, sire, Calrossie Command (275428) by Calrossie Control (255913), out of Calrossie Cynthia (150436). Dam, Cluny Rosewood 33d 1917362 by Cluny Sirdar Augustus (262734), out of Cluny Rosewood 26th (158083).

Phingask Bank Roll, sire, Rhingask Roll Call (259306) by Schivas Bank Roll (247042), out of Phingask Secret 8th (127477). Dam, Phingask Broadhooks Beauty (127474) by Kinellar Judge (224169), out of Broadhooks Beauty 3d (65351).

Balmuchy Landlord, sire, Naemoor Landlord 1719128 by Aldie Knight 1558527, out of Naemoor Molly 6th (89110). Dam, Naemoor Buttercup 4th 1719130 by Pitpointie Herald 1713127, out of Naemoor Buttercup 2d 1719129.

Edellyn Rosemary 20th 2140748—A beautifully bred Shepherd Rosemary by Edellyn Command out of a good red daughter of the good breeding bull Phingask Bank Roll, and the granddam by the Kansas City Royal Grand Champion Balmuchy Landlord. This calf will make a real matron, as have all the daughters of Edellyn Command and they invariably are good milkers.



Edellyn Broadhooks 17th

• • •
EDELLYN BROADHOOKS 17th has all the quality of ancestry to make her one of the outstanding females anywhere. She is by Calrossie Mercury and out of a show heifer that's as near the ideal in type as any cow at Edellyn. Dean Blizzard picked the grandam for the Okla. A. & M. when given the choice of the first calf heifers, and everyone is aware of his judgment.

*We Recommend this heifer very
 Highly for a Real Foundation
 Female.*

Cow

Lot 26

EDELLYN BROADHOOKS 17th 2087425

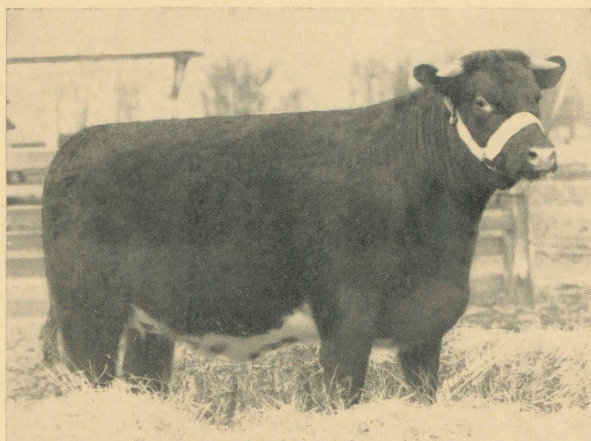
Roan, calved October 28, 1941. Bred and owned by Thos. E. Wilson, Wilson, Illinois.

Dams	Breeders of Dams	Sires	Breeders of Sires
1978832		Calrossie Mercury 1857318	J. MacGillivray
Edellyn Broadhooks 10th	Thos. E. Wilson	Brawith Count 1846144	David Douglass
Edellyn Broadhooks 4th	Thos. E. Wilson	Raveni Leader 1680652	T. Dorsey Jones
Collynie Broad. 12th (Imp.)	Duthie Webster	Bapton Boxing Day 1772969	C. H. E. Chubb
Stella 11th	Mrs. Duncan Stewart	Millhills Diamond	Mrs. Duncan Stewart
Stella 7th	Duncan Stewart	Collynie Bright Star 750097	W. Duthie
Stella 3d	Duncan Stewart	Golden Gift 226585	W. S. Marr
Stella 2d	Duncan Stewart	Evening Star 180002	A. Robertson
Stella	Lord Lovat	Royal Star 151796	J. L. Reid
Rose of Underley 2d	Lord Lovat	Lord Violet 144899	Wm. Duthie
Rose of Underley	Lord Lovat	Star of Underley 144843	G. Inglis

Calrossie Mercury, sire, Calrossie Control (255913) by Collynie Royal Leader 1492017, out of Calrossie Princess Mona (88108). Dam, Calrossie Augusta Opal (179796) by Calrossie Nonpareil Chief (262369), out of Calrossie Augusta Polly (140698).

Brawith Count, sire, Brawith Boy 1836058 by Collynie Democrat (243063), out of Schivas Bonnie Bud (116272). Dam, Morning Blossom 22d 1846145 by Cruggleton Bugler 1831196, out of Morning Blossom 17th =225348=.

Raveni Leader, sire, Browndale Pilot 1653006 by Browndale Coronet 1488771, out of Congalton Orange Blossom 1653009. Dam, Raveni Beauty 4th 1594098 by Browndale Star 1368844, out of Doorless Beauty 1071040.



Edellyn Clipper 35th

• • •
EDELLYN CLIPPER 35th is a three-quarters sister to Calrossie Souvenir, the 1941 Perth Champion, being by Calrossie Mercury, the 1939 Perth Champion, and out of half sisters. This is a very smooth, deep bodied heifer of the very fashionable Gordon Clipper family, topped by the best of MacGillivray breeding. She will make a very valuable brood cow with famous ancestry.

A Mercury that is a three-quarters sister to Calrossie Souvenir the 1941 Perth Champion.

Lot 27

Cow

EDELLYN CLIPPER 35th 2087426

Red, calved November 18, 1941. Bred and owned by Thos. E. Wilson, Wilson, Illinois.

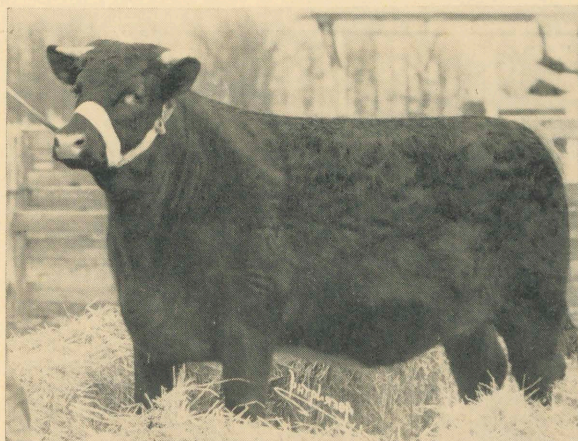
Dams	Breeders of Dams	Sires	Breeders of Sires
Clipper Cristobel (Imp.)	K. P. MacGillivray	Calrossie Mercury 1957318	J. MacGillivray
Connie Clipper	K. P. MacGillivray	Royal Mayor (273072)	K.P. MacGillivray
Cudham Clipper 5th	A. W. Maconochie	Calrossie Orange King	J. MacGillivray
Clipper Countess	W. M. Scott	Cluny Sir Augustus 1015825	Lady G. Cathcart
Boquhan Royal Clipper	S. Mitchell	Hean Monitor (131417)	Lord Merthyr
Consolation	A. T. Gordon	Collynie King Royal 672000	Wm. Duthie
Czarina	A. M. Gordon	Chancellor (85558)	F. Simmers
Camilla	A. M. Gordon	Corner Stone 150676	A. M. Gordon
Red Ruth	A. M. Gordon	Mario 2d 145418	A. M. Gordon
Ruth	A. M. Gordon	Star of Morning 121243	Wm. Duthie
		Doctor A. Duff 118693	J. Williamson

Calrossie Mercury, sire, Calrossie Control (255913) by Collynie Royal Leader 1492017, out of Calrossie Princess Mona (88108). Dam, Calrossie Augusta Opal (179796) by Calrossie Nonpareil Chief (262369), out of Calrossie Augusta Polly (140698).

Royal Mayor, sire, Calrossie Officer Commanding (221735) by Bruiach Royal Broadhooks (205637), out of Calrossie Augusta 112th (51847). Dam, Windmill Mabel 2d (82580) by Millhills Battle Axe (192159), out of Windmill Lady Mabel 3d (45718).

Calrossie Orange King, sire, White Prince 1634159 by Cupbearer of Collynie 548990, out of Blood Royal 2d v64-1302E. Dam, Cudham Orange Blossom 9th (27253) by Golden Charm 1015826, out of Orange Blossom 47th v63-750E.

● ● ●
EDELLYN ORANGE BLOSSOM 46th is out of the grandam of Edellyn Mascot Mercury, the \$2000 Wisconsin Junior Champion, now owned by Mr. T. C. Potts of Mississippi, his dam having sold in our 1941 sale for \$1500.00. This heifer has every qualification for a great cow. Golden Blossom is 13 years old and has produced 11 calves, among them Browndale Golden the sire of the dam of the International Grand Champion, Sultan Browndale, two cows in Mr. Henry Knight's herd, two at Edellyn and Edellyn Merry Mercury purchased by Judge Frank E. Woods of Ohio in 1942.



Edellyn Orange Blossom 46th

A Daughter of Command whose dam is sired by a half brother to Collynie Royal Leader.

Cow

Lot 28

EDELLYN ORANGE BLOSSOM 46th 2114660

Red, calved January 24, 1942. Bred and owned by Thos. E. Wilson, Wilson, Illinois.

Dams	Breeders of Dams	Sires	Breeders of Sires
		2000000	
1377673		Edellyn Command	C. A. Linzee Gordon
Golden Blossom	C. H. Prescott & Sons	Collynie Golden Ring 1266688	Wm. Duthie
Cherry Blossom 5th	C. H. Prescott & Sons	Newton Champion 650059	A. T. Gordon
Sunnyside Blossom	A. E. Stevenson	Diamond King 308534	A. E. Stevenson
Cherry Blossom 7th	A. Chrystal	Lovat Champion 157617	Lord Lovat
Cherry Blossom 4th	J. Knox Ledingham	Sittyton Prince 156731	Wm. Duthie
Cherry Blossom	A. I. Fortescue	Star of Morning 121243	Wm. Duthie
Orange Blossom 34th	J. Law	Reformer 149560	Wm. Duthie
Orange Blossom 31st	J. Law	May Day 157372	J. Bruce
Orange Blossom 29th	A. Cruickshank	Pride of the Isles 45274	A. Cruickshank
Orange Blossom 21st	A. Cruickshank	Caesar Augustus (25704)	A. Cruickshank

Edellyn Command, sire, Calrossie Command (275428) by Calrossie Control (255913, out of Calrossie Cynthia (150436). Dam, Cluny Rosewood 33d 1917362 by Cluny Sirdar Augustus (262734), out of Cluny Rosewood 26th (158083).

Collynie Golden Ring, sire, Balcairn White Eagle 1259318 by Collynie Golden Knight (135819), out of Edgcote White Mabel v61-722E. Dam, Collynie Rosebud 1266690 by Quartermaster 829849, out of Star's Rose 1067108.

Newton Champion, sire, Grand Champion 616773 by Champion of Scotland 387167, out of Golden Wreath 17th v57-593E. Dam, Newton Molly 2d 650063 by Newton Crystal 340-775, out of Lady Molly 650062.

Lot 29

Cow

EDELLYN AUGUSTA 19th 2112056

Roan, calved November 27, 1941. Bred and owned by Thos. E. Wilson, Wilson, Illinois.

Dams	Breeders of Dams	Sires	Breeders of Sires
Augusta Agnes 1558550 (Imp.)	Jas. Durno	Calrossie Mercury 1957318	J. MacGillivray
Augusta 103d	W. & J. W. Peterkin	Golden Dawn 1558537	R. M. Wilson
Augusta Olive	A. J. Marshall	Collynie Star 951412	Wm. Duthie
Augusta Primrose 2d	A. J. Marshall	Collingwood 949841	C. H. Jolliffe
Augusta Primrose	M. Marshall	Choir Boy 342641	C. H. Jolliffe
Augusta 95th	J. Bruce	Primrose Knight 342646	C. H. Jolliffe
Augusta 56th	J. Bruce	Waverley 136405	A. Strachan
Augusta 11th	J. Bruce	Marplot 141539	A. M. Gordon
Augusta 7th	J. Bruce	Cetewayo 106768	A. Cruickshank
Augusta 2d	J. Bruce	Privy Seal 109647	A. Cruickshank
		Le Premier 108708	J. Bruce

Calrossie Mercury, sire, Calrossie Control (255913) by Collynie Royal Leader 1492017, out of Calrossie Princess Mona (88108). Dam, Calrossie Augusta Opal (179796) by Calrossie Nonpareil Chief (262369), out of Calrossie Augusta Polly (140698).

Golden Dawn, sire, Collynie Cavalier 1713113 by Quartermaster 829849, out of Lady Clara 13th v60-869E. Dam, Collynie Golden Rose v62-768E by Knight of Collynie 607440, out of Collynie Goldie v57-679E.

Collynie Star, sire, Clipper Star 816581 by Collynie Cruickshank 613049, out of Clipper Princess v58-432 E. Dam, Gainford Hilda v60-811E by Proud Broadhooks 950325, out of Hilda v59-730E.

Edellyn Augusta 19th 2112056—A very well bred Bruce Augusta by Calrossie Mercury and out of an imported Durno bred dam. This family has come through good hands and nothing but good bulls have been used throughout. Augusta Agnes, the dam of this heifer, has been a consistent producer of good cattle.

Lot 30

Cow

EDELLYN GOLDIE 12th 2087429

Roan, calved November 19, 1941. Bred and owned by Thos. E. Wilson, Wilson, Illinois.

Dams	Breeders of Dams	Sires	Breeders of Sires
	1558571	Edellyn Command	2000000 Chas. A. Linzee Gordon
Doune Goldie 12th (Imp.)	Earl of Moray	Aldie Knight 1558527	F. MacGillivray
Doune Goldie 6th	Earl of Moray	Eclipse of Collynie 1111523	Wm. Duthie
Doune Goldie 4th	Earl of Moray	Proud Warrior 530144	W. Anderson
Doune Goldie	Earl of Moray	Diamond Earl 525472	J. Durno
Golden Thistle	J. McWilliam	Scotch Thistle 151800	W. S. Marr
Golden Queen	J. McWilliam	Clarendon 149047	J. Wilson
Golden Lady	J. McWilliam	Abbot 206943	J. McWilliam
Golden Rose	J. McWilliam	Knickerbocker 61392	Duke of Buccleuch
Goldie 17th	W. S. Marr	Heir of Englishman 21595	G. R. Barclay
Goldie 9th	W. S. Marr	Macduff (26773)	Mr. Bruce

Edellyn Command, sire, Calrossie Command (275428) by Calrossie Control (255913), out of Calrossie Cynthia (150436). Dam, Cluny Rosewood 33d 1917362 by Cluny Sirdar Augustus (262734), out of Cluny Rosewood 26th (158083).

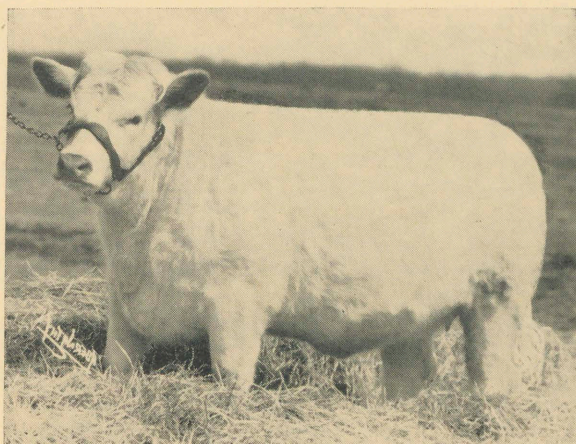
Aldie Knight, sire, Calrossie White Prince (179192) by White Prince 1634159, out of Una Undine v65-936E. Dam, Rosewood 92d (40472) by Balcairn Diamond (160948), out of Rosewood 89th (6166).

Eclipse of Collynie, sire, Max of Cluny 769878 by Dunglass Commodore 680169, out of Cecilia 9th v57-564E. Dam, Collynie Estelle 1259362 by Knight of Collynie 607440, out of Stella 3d 1259389.

Edellyn Goldie 12th 2087429—Only a last minute switch placed this heifer in the sale. We did not take her picture because she was going into the breeding herd. Here is an ideal daughter of Edellyn Command out of an imported cow that has been a real producer. One of her daughters in the Beath herd in Canada produced the dam of Edellyn Mission Mercury, the sensational Nelson Trophy winner of 1941. We had to replace another heifer or this one would never have been sold. Buy her—she is a good one to own.



EDELLYN BROADHOOKS 18th is certainly a sweet daughter of Edellyn Modern Mercury, the \$2500 son of Calrossie Mercury, now the head of the F. S. Davidson herd in Ohio. The next dam is one of the best daughters of Edellyn Command, and was in our show herd in 1941. The grandam was Junior Champion at Ohio as a yearling and the next dam was the top heifer of her year and now in the Oklahoma A&M herd. These are all heavy milking cows.



Edellyn Broadhooks 18th

A grand daughter of Mercury out of a show heifer.

Cow

Lot 31

EDELLYN BROADHOOKS 18th 2114657

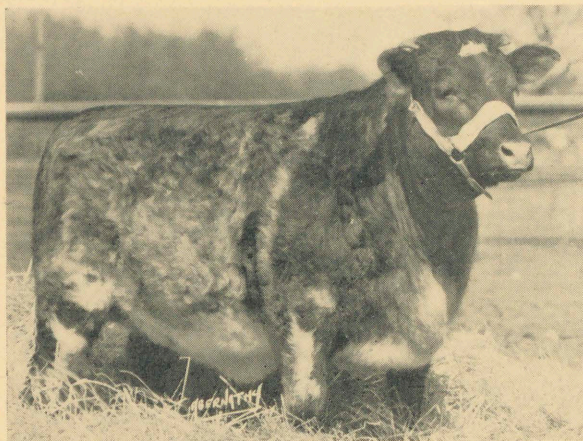
White, calved March 28, 1942. Bred and owned by Thos. E. Wilson, Wilson, Illinois.

Dams		Breeders of Dams	Sires	Breeders of Sires
	2014786		Edellyn Modern Mercury	2024078
Edellyn Broadhooks 12th	Thos. E. Wilson	Edellyn Command	Thos. E. Wilson	
Edellyn Broadhooks 6th	Thos. E. Wilson	Brawith Count 1846144	C. A. Linzee Gordon	
Edellyn Broadhooks 4th	Thos. E. Wilson	Raveni Leader 1680652	David Louglass	
Collynie Broad. 12th (Imp.)	Duthie Webster	Bapton Boxing Day 1772969	T. Dorsey Jones	
Stella 11th	Mrs. Duncan Stewart	Millhills Diamond	C. H. E. Chubb	
Stella 7th	Duncan Stewart	Collynie Bright Star 750097	Mrs. Duncan Stewart	
Stella 3d	Duncan Stewart	Golden Gift 226585	W. Duthie	
Stella 2d	Duncan Stewart	Evening Star 180002	W. S. Marr	
Stella	Lord Lovat	Royal Star 151796	A. Robertson	
Rose of Underley 2d	Lord Lovat	Lord Violet 144899	J. L. Reid	
Rose of Underley	Lord Lovat	Star of Underley 144843	Wm. Duthie	
			G. Ingles	

Edellyn Modern Mercury, sire, Calrossie Mercury 1957318 by Calrossie Control (255913), out of Calrossie Augusta Opal (179796). Dam, Glenburn Ramsden Lass 1711819 by Edellyn Favorite 1430250, out of Miss Ramsden 3d =232223=.

Edellyn Command, sire, Calrossie Command (275428) by Calrossie Control (255913), out of Calrossie Cynthia (150436). Dam, Cluny Rosewood 33d 1917362 by Cluny Sirdar Augustus (262734), out of Cluny Rosewood 26th (158083).

Brawith Count, sire, Brawith Boy 1836058 by Collynie Democrat (243063), out of Schivas Bonnie Bud (116272). Dam, Morning Blossom 22d 1846145 by Cruggleton Bugler 1831196, out of Morning Blossom 17th =225348=.



Edellyn Golden Chain 6th

● ● ●
EDELLYN GOLDEN CHAIN 6th is a real block of a heifer that certainly would be in anybody's show herd. She comes by it rightfully as she is by Edellyn Command and out of the same family that produced the International grand champion Sultan Browndale. This is a rare combination of Command and Browndale Count breeding and a heifer of the right type and sweetness to go with it.

A Command out of the same family as Sultan Browndale.

Lot 32

Cow

EDELLYN GOLDEN CHAIN 6th 2126871

Roan, calved May 17, 1942. Bred and owned by Thos. E. Wilson, Wilson, Illinois.

Dams	Breeders of Dams	Sires	Breeders of Sires
	1886692	Edellyn Command	2000000 C. A. Linzee Gordon
Rookwood Golden Chain 9th	C. F. Curtiss	Browndale Grand 1717472	C. F. Curtiss
Rookwood Golden Chain 3d	C. F. Curtiss	Golden Browndale 1498465	Thos. E. Wilson
Golden Lady 13th	W. F. Barber	Village Perfection 555709	Uppermill Farm
Golden Lady 9th	Geo. Allen & Sons	Victor Sultan 296335	F. W. Harding
Golden Chain (Imp.)	J. Deane Willis	Silver Plate 145554	J. Bruce
Golden Genista	J. Deane Willis	Bapton Javelin 141831	J. Deane Willis
Golden Geraldine	J. Deane Willis	Count Lavender 132575	Wm. Duthie
Gwendoline	A. Cruickshank	Feudal Chief 92299	A. Cruickshank
Genista	A. Cruickshank	Cawdor 65412	A. Cruickshank
Garnish	A. Cruickshank	Royal Duke of Gloster 20901	A. Cruickshank

Edellyn Command, sire, Calrossie Command (275428) by Calrossie Control (255913), out of Calrossie Cynthia (150436). Dam, Cluny Rosewood 33d 1917362 by Cluny Sirdar Augustus (262734), out of Cluny Rosewood 26th (158083).

Browndale Grand, sire, Golden Browndale 1498465 by Edellyn Stamp 1406827, out of Golden Blossom 1377673. Dam, 58th Duchess of Gloster 1338229 by Lavender Toft 1053-384, out of 57th Duchess of Gloster 1068177.

Golden Browndale, sire, Edellyn Stamp 1406827 by Browndale Count 1156438, out of Maxwalton Beauty 6th 1044668. Dam, Golden Blossom 1377673 by Collynie Golden Ring 1266688, out of Cherry Blossom 5th 1229721.



Edellyn Orange Blossom 47th

• • •
EDELLYN ORANGE BLOSSOM 47th is out of the same dam as the \$1300.00 Edellyn Pioneer Mercury that sold to the University of Minnesota in the 1941 sale. Out of a daughter of a very good, well bred imported cow, this sweet heifer will make a very useful kind of a cow. This family has bred true to type.

*A Command that will be
 a good heifer for Herd Foundation.*

Cow

Lot 33

EDELLYNN ORANGE BLOSSOM 47th 2114661

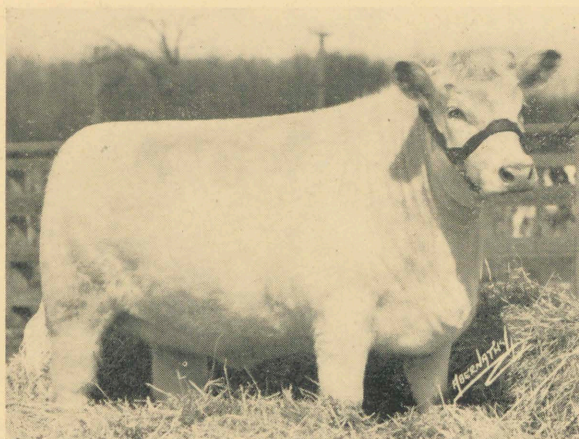
Red, calved January 26, 1942. Bred and owned by Thos. E. Wilson, Wilson, Illinois.

Dams	Breeders of Dams	Sires	Breeders of Sires
		2000000	
Orange Belle 2d 1892764	Chas. F. Fothergill	Edellyn Command	C. A. Linzee Gordon
Orange Belle (Imp.)	W. Anderson	Cumberland =219254=	J. Miller, Jr.
Orange Queen 3d	W. Anderson	Collynie Count Lavender (243061)	D. Webster
Orange Queen	W. Anderson	Balcairn Bursar (220693)	F. L. Wallace
Proud Orange Blossom	W. Duthie	Golden Champion (156084)	W. Anderson
Orange Blossom 31st	W. & J. W. Peterkin	Cluny Proud Augustus	Lady G. Cathcart
Orange Blossom 28th	W. & J. W. Peterkin	Dunglass Star (136268)	W. & J. W. Peterkin
Orange Blossom 19th	W. & J. W. Peterkin	Collynie King (111336)	W. Duthie
Orange Blossom 15th	W. & J. W. Peterkin	Jim Sidey (99230)	A. Robertson
Excellent 2d	W. Peterkin	Royal Banner (87152)	W. Duthie
		Invader 1022507	J. Bruce

Edellyn Command, sire, Calrossie Command (275428) by Calrossie Control (255913), out of Calrossie Cynthia (150436). Dam, Cluny Rosewood 33d 1917362 by Cluny Sirdar Augustus (262734), out of Cluny Rosewood 26th (158083).

Cumberland, sire, Collynie Royal Purse (243083) by Rosehaugh Mandarin 1726754, out of Tarty Princess Royal 32d (81614). Dam, Countess Selma 9th =249677= by Augusta Commander =190892=, out of Countess Selma 6th =185751=.

Collynie Count Lavender, sire, Collynie Golden Key 1558536 by Masterstroke 650634, out of Collynie Clipper 6th 1259360. Dam, Collynie Lavender 30th 1773017 by Marquis of Millhills 989081, out of Sittyton Lavender 29th 1773081.



Edellyn Dorothy 18th

• • •
EDELLYN DOROTHY 18th is out of a full sister to the International grand champion, Browndale Goldspur, and is a full sister to Edellyn Count Mercury that sold in our 1942 sale to Merl Whalin. Henry Knight of Kentucky bought a very choice heifer out of the same cow in our 1941 sale. Here is a foundation female of the right kind and certainly bred to reproduce the very tops of the breed.

*A Mercury out of a full sister
 to Browndale Goldspur.*

Lot 34

Cow

EDELLYN DOROTHY 18th 2126869

White, calved April 18, 1942. Bred and owned by Thos. E. Wilson, Wilson, Illinois.

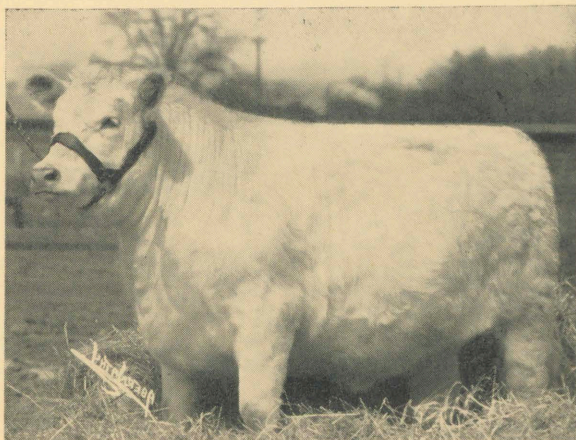
Dams	Breeders of Dams	Sires	Breeders of Sires
Edellyn Dorothy 5th 1518818	Thos. E. Wilson	Calrossie Mercury 1957318	J. MacGillivray
Edellyn Dorothy	Thos. E. Wilson	Browndale Count 1156438	Jas. Douglas
Dundee Dorothy	W. H. Miner	Kingwood 682218	C. B. Portman
Red Dorothy 3d	W. H. Miner	Right Stamp 412396	Anoka Farms
Red Dorothy 2d	W. H. Miner	Augusta Baron 392270	Uri Pierce
Red Dorothy (Imp.)	Geo. Campbell	Primrose Monarch 343580	Wm. Duthie
Dorothy Bessie	J. Paterson	Royal Fame 343463	G. Campbell
Lady Dorothy 38th	J. Paterson	Court Favourite (83196)	W. S. Marr
Lady Dorothy 32d	J. Paterson	Goldspur (64107)	Wm. Duthie
Lady Dorothy 13th	J. Paterson	Redstart (63194)	A. M. Gordon
		Courtier (42984)	Wm. Duthie

Calrossie Mercury, sire, Calrossie Control (255913) by Collynie Royal Leader 1492017, out of Calrossie Princess Mona (88108). Dam, Calrossie Augusta Opal (179796) by Calrossie Nonpareil Chief (262369), out of Calrossie Augusta Polly (140698).

Browndale Count, sire, Browndale 334947 by Avondale 245144, out of Maxwalton Mina 2d 86601. Dam, Morning Blossom 2d 1023473 by Roan Chief 361556, out of Morning Blossom 711477.

Kingwood, sire, Proud Matadore 770122 by Lord Matadore 638606, out of Primrose Girl v54-682E. Dam, Rosewood Girl v59-666E. by Strowan Clarion 1040011, out of Collynie Rosewood 5th v57-678E.

• • •
EDELLYN AUGUSTA 21st is one of the most desirable females in the sale. She is a very deep bodied, typy, good headed heifer, out of the same dam as the \$4000 Edellyn Radiant Command now siring such wonderful calves for Dillard Clark. Sired by Mercury out of an Aldie Masterstroke dam and the grand-dam by a son of Cupbearer of Collynie, this heifer carries the best Bruce Augusta pedigree in the country. And there is a mighty sweet heifer to go with it.



Edellyn Augusta 21st

*A Mercury out of the same Dam as
 Edellyn Radiant Command.*

Cow

Lot 35

EDELLYN AUGUSTA 21st 2126868

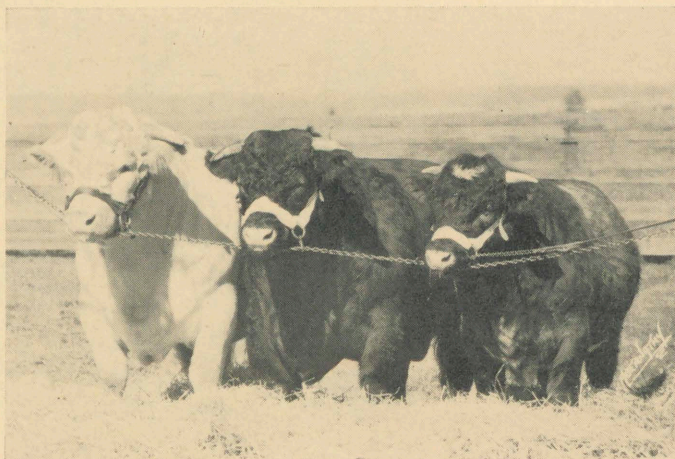
White, calved May 14, 1942. Bred and owned by Thos. E. Wilson, Wilson, Illinois.

Dams	Breeders of Dams	Sires	Breeders of Sires
	(Imp.)		
Millhills Augusta 25th	Duncan M. Stewart	Calrossie Mercury 1957318	J. MacGillivray
Millhills Augusta 10th	Duncan M. Stewart	Aldie Masterstroke 1753585	F. MacGillivray
Augusta Maid	Robt. Bruce	Radiant 1529922	J. Durno, Est.
Lady Augusta	Robt. Bruce	Merry Morning 956334	J. Marr
Spicy Augusta	Robt. Bruce	Sittyton Chief 593255	Wm. Duthie
Augusta First	Robt. Bruce	Spicy Gift 610659	W. Anderson
Augusta Hope	Robt. Bruce	First Fiddle 317072	Wm. Duthie
Augusta 87th	Jas. Bruce	Winning Hope 273854	Robt. Bruce
Augusta 61st	Jas. Bruce	Waverley 136405	A. Strachan
Augusta 14th	Jas. Bruce	Cap-a-Pie 106717	Jas. Bruce
		Cetewayo 106768	A. Cruickshank

Calrossie Mercury, sire, Calrossie Control (255913) by Collynie Royal Leader 1492017, out of Calrossie Princess Mona (88108). Dam, Calrossie Augusta Opal (179796) by Calrossie Nonpareil Chief (262369), out of Calrossie Augusta Polly (140698).

Aldie Masterstroke, sire, Naemoor Jasper 1634156 by Saltoun Crusader (184883), out of Naemoor Stella 7th (52915). Dam, Aldie Broadhooks Nellie (64382) by Calrossie White Prince (179192), out of Dargill Broadhooks (24151).

Radiant, sire, Cupbearer of Collynie 548990 by Merry Stamp 410884, out of Proud Queen v55-671E. Dam, Roan Rosebud 5th v65-1121E by Abbott (123762), out of Redemption v60-932E.



Edellyn Mission Mercury, Edellyn Royal Leader and Edellyn Mascot Mercury. The first prize group of three bulls where shown last year.

Lot 36

Cow

EDELLYN AUGUSTA 20th 2126867

Roan, calved April 21, 1942. Bred and owned by Thos. E. Wilson, Wilson, Illinois.

Dams	Breeders of Dams	Sires	Breeders of Sires
	1944443	Calrossie Mercury 1957318	J. MacGillivray
Sni-A-Bar Augusta 28th	Sni-A-Bar Farms	Cluny Clarendon	Chas. A. Linzee Gordon
Kalarama Augusta 15th	Kalarama Farm	Kalarama Augustus 1466739	Kalarama Farm
Kalarama Augusta 4th	Kalarama Farm	Anoka Rodney 1190082	Anoka Farms
Augusta Heather	C. E. Tilton	Gainford Champion 410269	J. A. Watt
Augusta Crocus (Imp.)	Robt. Bruce	Cumberland 593252	J. Gill
Augusta Lee	Robt. Bruce	Sittyton Chief 593255	Wm. Duthie
Augusta Burn	Robt. Bruce	Colonel Burn 610650	James Durno
Augusta First	Robt. Bruce	First Fiddle 317072	Wm. Duthie
Augusta Hope	Robt. Bruce	Winning Hope 273854	Robt. Bruce
Augusta 87th	James Bruce	Waverley 136405	A. Strachan

Calrossie Mercury, sire, Calrossie Control (255913) by Collynie Royal Leader 1492017, out of Calrossie Princess Mona (88108). Dam, Calrossie Augusta Opal (179796) by Calrossie Nonpareil Chief (262369), out of Calrossie Augusta Polly (140698).

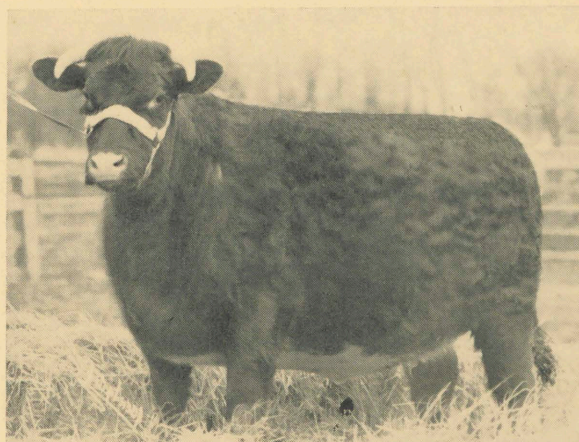
Cluny Clarendon, sire, Calrossie Scout Leader (249388) by Collynie Royal Leader 1492017, out of Calrossie Beres Butterfly (299261). Dam, Cluny Clara 7th (94991) by Red Robin (210743), out of Cluny Clara 6th (59316).

Kalarama Augustus, sire, Anoka Rodney 1190082 by Ballylin Rodney 945251, out of Wini-fred 19th 971611. Dam, Lespedeza Augusta 14th 795556 by Lespedeza Sultan 406929, out of Diamond Augusta 93419.

Edellyn Augusta 20th 2126867—Picture was not taken as she was slated for the breeding herd up to the very hour that this catalog went to press. This daughter of Calrossie Mercury will be one of the most desirable in the sale. Look her up and you will see why we wanted to keep her. The heifer speaks for herself and you can't beat her pedigree. One of the best females to be sold this year.

• • •

EDELLYN ROSEWOOD 32d will make a great foundation family for a Rosewood 86th tribe in your herd. She is a daughter of Mercury and in calf since November 19th to Edellyn Command. This should prove an outstanding mating and this very thick good headed heifer comes from a line of ancestry that is modern in type and character.



Edellyn Rosewood 32d

A daughter of Mercury tracing to Rosewood 86th.

Cow

Lot 37

EDELLYN ROSEWOOD 32d 2043442

Roan, calved September 25, 1940. Bred and owned by Thos. E. Wilson, Wilson, Illinois.

Dams	Breeders of Dams	Sires	Breeders of Sires
Rosewood 124th 1913833	C. F. Curtis	Calrossie Mercury 1957318	J. MacGillivray
Rosewood 123d	J. H. Degginger	Royal Regent 2d 1717475	C.F. Curtiss
Rosewood 122d	Jos. Miller & Sons	Fancy Marshal 1248123	Tomson Bros.
Rosewood 120th	Bellows Bros.	Villager's King 576159	Uppermill Farm
Crestmead Rosewood B.	W. A. Betteridge	Parkdale Baron 410363	Bellows Bros.
Rosewood 87th	Carpenter & Ross	Orange Model 317228	W. A. Betteridge
Rosewood 86th (Imp.)	Geo. Walker	Whitehall Count 209775	E. S. Kelly
Rosewood 81st	Jas. Bruce	Pride of Day 203941	Wm. Duthie
Rosewood 45th	Jas. Bruce	Waverley 136405	A. Strachan
Rosewood 27th	Jas. Bruce	Banadullae 149524	Jas. Bruce
		Duke of Edinburgh 130843	Jas. Bruce

Calrossie Mercury, sire, Calrossie Control (255913) by Collynie Royal Leader 1492017, out of Calrossie Princess Mona (88108). Dam, Calrossie Augusta Opal (179796) by Calrossie Nonpareil Chief (262369), out of Calrossie Augusta Polly (140698).

Royal Regent 2d, sire, Rookwood Regent 1399826 by Lavender Toft 1053384, out of Rookwood Butterfly 2d 840705. Dam, Rookwood Golden Chain 3d 1645485 by Golden Browndale 1498465, out of Golden Lady 13th 1307124.

Fancy Marshal, sire, Marshal's Crown 678827 by Village Marshal 427572, out of Marigold 3d 159480. Dam, Fancy 23d 755078 by Beaver Creek Sultan 352456, out of Fancy 19th 201281.

EDELLYN ROAN LADY 15th 2126877

White, calved May 27, 1942. Bred and owned by Thos. E. Wilson, Wilson, Illinois.

Dams	Breeders of Dams	Sires	Breeders of Sires
	1800407	Calrossie Mercury 1957318	J. MacGillivray
Raveni Roan Lady 10th	T. Dorsey Jones	Raveni Leader 1680652	T. Dorsey Jones
Raveni Roan Lady 7th	T. Dorsey Jones	Lavender Stamp 1594096	T. Dorsey Jones
Roan Lady 23d	Jas. Durno	Collynie Golden Dream 551712	Wm. Duthie
Red Lady 22d	Jas. Durno	Golden Sittyton 649146	Wm. Duthie
Royal Lady	Jas. Durno	Pride of the Herd 401144	Wm. Duthie
Rosetta 19th	J. Young	Sittyton Choice 284634	Wm. Duthie
Rosetta 7th	J. Young	John Bull 141532	Geo. Bruce
Rosetta 2d	J. Young	Vice Chancellor 110492	A. Cruickshank
Rosetta	W. S. Marr	Elocutionist 92221	W. S. Marr
Roan Lady 8th	W. S. Marr	Shere Ali 100814	W. S. Marr

Calrossie Mercury, sire, Calrossie Control (255913) by Collynie Royal Leader 1492017, out of Calrossie Princess Mona (88108). Dam, Calrossie Augusta Opal (179796) by Calrossie Nonpareil Chief (262369), out of Calrossie Augusta Polly (140698).

Raveni Leader, sire, Browndale Pilot 1653006 by Browndale Coronet 1488771, out of Congalton Orange Blossom 1653009. Dam, Raveni Beauty 4th 1594098 by Browndale Star 1368844, out of Doorless Beauty 1071040.

Lavender Stamp, sire, Browndale Star 1368844 by Browndale Count 1156438, out of Lady Venus 1022530. Dam, Lavender N. 3d 1024401 by Missie's Stamp 427924, out of Lavender N. 2d 598069.

Edellyn Roan Lady 15th 2126877—Is certainly the right kind to buy. She is by the Perth Champion and out of a very typy and breedy dam by the All-American Junior Champion, Raveni Leader. Out of the same dam as Edellyn Daily Command, one of the best bulls in our 1942 sale and purchased by Judge Woods of Ohio, and Edellyn Roan Lady 12th, purchased by Henry Knight of Kentucky. There is not a breeder in this entire pedigree that isn't well known for the quality of his Shorthorns. She will improve any herd.

Will Johnson Says:

Now you have come to the end of this catalog. I am sure that you will agree with me that though for a quarter of a century Edellyn Farms have been recognized to be the **Herd Bull Headquarters** of the United States and a most prolific source of foundation females of the highest class, the sale offering described and pictured in this catalog is superior to any that heretofore have been sold at Edellyn and that it contains the fourteen best bulls ever offered by one breeding establishment in one sale in America.

Alvin H. Sanders, author of *The History of Shorthorn Cattle*, said recently in the columns of *The Shorthorn World*, "There is nothing that will quite displace the human eye and hand as a judge of Shorthorn conformation." That being true, I can assure you that the good impression that you have formed of this great offering of Shorthorns will be greatly augmented when, on June 7, you will see these grand cattle without the aid of the camera and you will feel their quality and the thickness and smoothness of flesh with your own hands. Truly this is Edellyn's Best of All Times Sale.

Will Johnson

EDELLYNS BREEDING • • •

BRINGS OUT THE BEST

PLACE THE EDELLYN CROSS • •

ACROSS YOUR PEDIGREES

**PLEASE BRING THIS CATALOG
WITH YOU TO THE SALE.**

1000
1000
4000
3200
9200. total income Broadhooks family

THE FRED HAHNE PRINTING COMPANY
Live Stock Sale Catalog Printers
Webster City, Iowa