

**22nd
ANNUAL
SALE**

Edellyn Farms

Scotch Shorthorn Cattle

• • •

Monday, June 2nd, 1947

THOS. E. WILSON, Owner

We
Invite You
To Our
Annual
Sale



Thos. E. Wilson and Calrossie Mercury

The twenty-one annual sales held at Edellyn Farms have been a lot of pleasure and satisfaction to me and I look forward eagerly each year, to the gathering here at the farm of all those that are interested in good Shorthorn Cattle.

It is with genuine pleasure that we again extend to you a very cordial invitation to Edellyn Farms on the occasion of our 22nd annual auction which will feature our greatest bull offering to date and a group of females that for quality, uniformity of type and breeding are without equal in our history.

The record of our show herd at the major shows during the past year, and the performance of cattle that trace their ancestry to bulls and females that have been purchased at prior sales are ample evidence that buying at the fountain head of the Mercurys and the Royal Leaders is your surest and safest method to real accomplishment with Shorthorn Cattle.

We are indeed proud to present this offering to you, knowing full well that they will aid you in reaching your desired goal and most certainly hope that you will honor us with your presence on this occasion.

Thos. E. Wilson

ATTEND THIS CIRCUIT OF SALES

May 29—Tomson Bros., Wakarusa, Kan.

May 30-31—Sni-A-Bar dispersion—Kansas City, Mo.

June 2—Edellyn Farms, Wilson, Ill.

June 3—Northwest Chicago Sales, Chicago.

Edellyn Farms

TWENTY SECOND ANNUAL AUCTION

Thos. E. Wilson, Owner Allan C. Atlason, Mgr.

Wm. Pepper Harry Ackerman Kenneth Arzt
Herdsmen

TERMS AND CONDITIONS

HEALTH—The Edellyn Herd is Federally Accredited for Tuberculosis (Certificate No. 130053) and every animal has passed the blood test for Bangs Disease within thirty days of the date of the sale and they are guaranteed to comply with the health requirements of any State or any herd.

GUARANTEE—All Cattle in this sale will be sold under the standard guarantee endorsed by the American Shorthorn Breeders Association. Certificates of registry and transfer will be furnished with each lot sold. Shipment will be made as soon as possible after the close of the sale without trouble to the purchaser, but at their risk of loss or injury.

TERMS—Cash.

HOW TO GET TO EDELLYN FARMS

Chicago, North Shore and Milwaukee Trains (electric). From Adams and Wabash Street Station (elevated), Chicago to North Chicago Junction on the hour. The distance is 38 miles. Conveyances will be provided from this station to the farm.

Edellyn Farms are located 2 miles west and 1 mile south of Waukegan city limits. It is also 2 miles due west of North Chicago. The Farms are bounded on the north by State Road 120 (McHenry-Waukegan), on the east by U. S. 41 (Milwaukee-Chicago) Skokie Highway and on the west by State Road 42A, and on which will be found the entrance.

MAIL BIDS

Those unable to be present and who desire to do so may send buying orders to Will Johnson or Hal Longley of The Shorthorn World; Clint Tomson, Secretary, American Shorthorn Breeders' Association; John E. Halsey of Wallaces' Farmer and Tom Sherlock of Cornbelt Farm Dailies

Auctioneers: J. E. Halsey and Ham James

Congress Hotel, Chicago—Sale Headquarters
Mention EDELLYN in making reservations

TO BE HELD AT EDELLYN FARMS

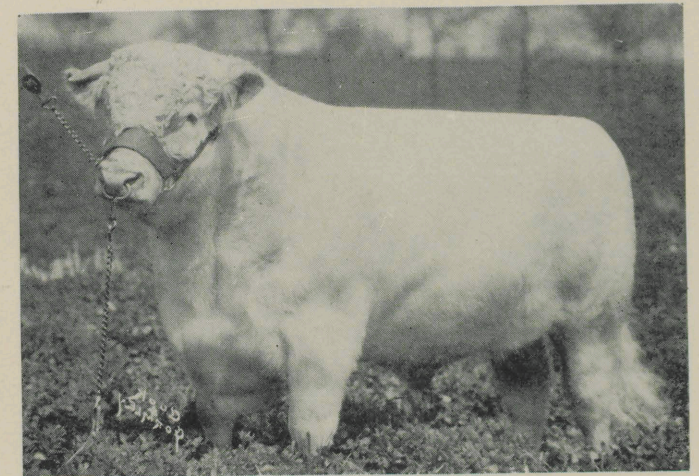
Wilson, Illinois
MONDAY, JUNE 2nd, 1947

Sale Will Start at 1:00 O'Clock Central Standard Time

Lunch will be served at the farm.

Farm Telephone—Waukegan Majestic 952Y2

EDELLYN'S PATTERN . . . IS THE ALL-AMERICAN PATTERN



Calrossie Mercury

The Perth Champion -1939
Sire of a Perth Champion -1941
Grand Sire of a Perth Champion -1945
Grand Sire of International Champion -1946

Bull

For References Only

CALROSSIE MERCURY 1957318 (290877)

White, calved Oct. 17, 1937. Bred by J. MacGillivray, Nigg Station, Rosshire, Scot;
Imp. May, 1939 by and owned by Thomas E. Wilson, Wilson, Ill.

Collynie Royal Leader 1492017
Roan, Duthie Webster

{ Balcairn White Eagle 1259318
White, F. L. Wallace
Eliza Lass V63-1226E
Red, J. D. Webster

SIRE
Calrossie Control 255913
White, J. MacGillivray

Calrossie Princess Mona 88109
Roan, J. MacGillivray

{ Naemoor Ian 209839
Red, J. J. Moubray
Calrossie Princess Marjory 64399
Roan, J. MacGillivray

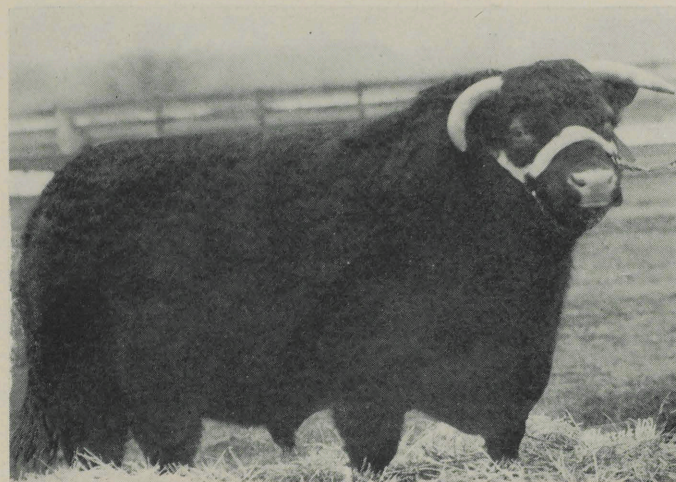
Calrossie Nonpareil Chief 262369
Roan, J. MacGillivray

{ Glastullich Waverley 237381
Red, W. MacGillivray
Calrossie Nonpareil Fairy 110141
Roan, J. MacGillivray

DAM
Calrossie Augusta Opal 179796
Roan, J. MacGillivray

Calrossie Augusta Polly 140698
Red, J. MacGillivray

{ Collynie Royal Leader 1492017
Roan, D. Webster
Calrossie Jeanie Augusta 88103
Red, J. MacGillivray



Edellyn Royal Leader
(at 6 years of age)

*All-American Favorite
Sire 1944, 1945 and 1946
International Congress High
Selling Bulls*

For Reference Only

EDELLYN ROYAL LEADER 2057560

Red, calved Dec. 9, 1940. Bred by W. McNair Snadden, Blairdrummond, Sterlingshire, Scot.; Imp. in dam Nov. 27, 1940 by and calved the property of Thos. E. Wilson, Wilson, Ill.

Bapton Crocus Leader 261766
Red, Bapton Shorthorn Co.

(Calrossie Ringleader 235690
Roan, J. MacGillivray
Bapton Crocus 13th 116718
Red, C. H. E. Chubb

SIRE
Coldoch Sensation 275892
Red, W. M. Snadden

Aldie Rosemary 160049
Red, Finlay MacGillivray

(Calrossie Satisfaction 249387
Roan, J. MacGillivray
Aldie Red Rose 120596
Red, F. MacGillivray

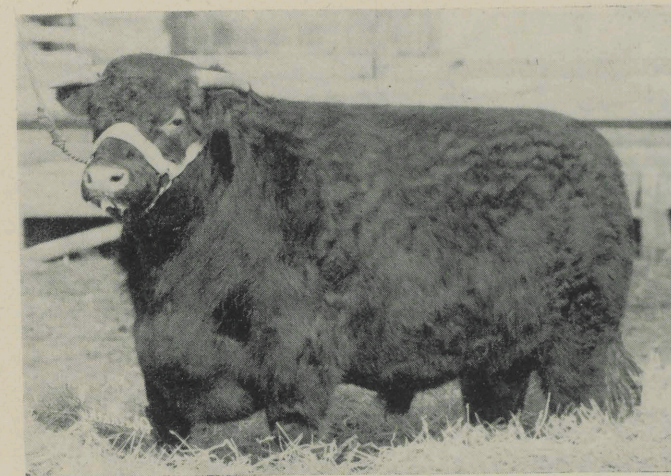
Balthayock Grand National 283376
Roan, R. Wyle Hill

(Calrossie Grand National 268893
Roan, J. MacGillivray
Balthayock Victoria 26th 158733
Roan, R. Wyle Hill

DAM
Coldoch Bonny Rothes 2031989
Roan, W. McNair Snadden

Coldoch Rothes Fairy 162726
Red, W. McNair Snadden

(Collynie Red Eagle 214703
Red, D. Webster
Coldoch Rothes Queen 2d 67638
Red, W. M. Snadden



Edellyn Royal Leader 23rd

• • •
EDELLYN ROYAL LEADER 23rd
—A favorite son of the All-American Favorite, out of one of Calrossie Mercury's Favorite daughters, outstanding and undefeated in 1946 senior yearling class, including the Royal and International, Grand Champion at Indiana State Fair and member of prize winning groups. Combining the good qualities of the Mercurys and the Royal Leaders, he is destined, and bred to breed. His calves are outstanding and as this is written his first calf at Edellyn attracts the nod of the good judges.

*A Royal Leader
Undefeated Senior Yearling Bull -1946*

Bull

For Reference Only

EDELLYN ROYAL LEADER 23D 2263178

Red, calved Sept. 17, 1944. Bred and owned by Thos. E. Wilson, Wilson, Ill.

Coldoch Sensation (275892)
Red, W. M. Snadden

(Bapton Crocus Leader (261766)
Red, Bapton Shorthorn Co.
Aldie Rosemary (160049)
Red, Finlay MacGillivray

SIRE
Edellyn Royal Leader 2057560
Red, W. McNair Snadden

Coldoch Bonny Rothes 2031989
Roan, W. McNair Snadden

(Balthayock Grand National (283376)
Dark Roan, R. Wyle Hill
Coldoch Rothes Fairy (162726)
Red, W. McNair Snadden

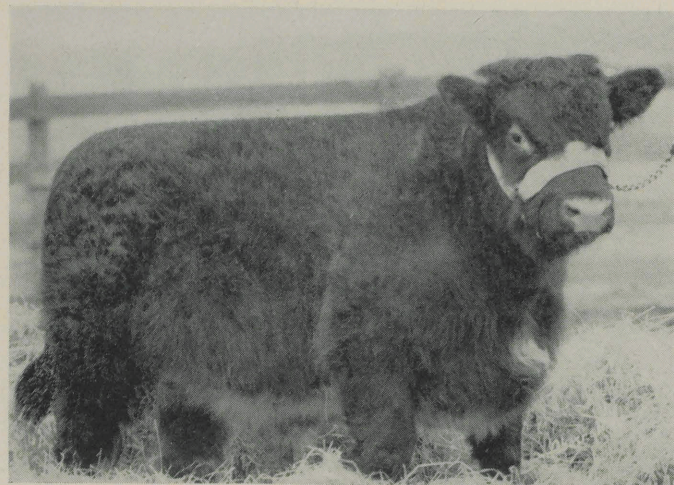
Calrossie Mercury 1957318
White, J. MacGillivray

(Calrossie Control (255913)
White, J. MacGillivray
Calrossie Augusta Opal (179796)
Dk. Roan, John MacGillivray

DAM
Edellyn Jealousy 3d 2126873
Red, Thos. E. Wilson

Scotston Jealous Jean (Imp.) 1917365
Red, Wm. B. Robertson

(Sundial (267072)
Roan, J. Durno
Jealousy (132707)
Dk. roan, J. & D. Robertson



Edellyn Diamond Mercury

• • •
EDELLYN DIAMOND MERCURY

—The son of Calrossie Mercury that is out of the same dam as Edellyn Royal Leader. Exceptional breeding, outstanding from the very first, he was chosen early in life for service at Edellyn. Sired by a Perth champion and out of a cow that was reserve grand champion at the Highland and as a yearling, and recognized as one of the most valuable cows in the country. (See page 44) Several females in this sale are by him and we recommend them very highly to you.

*A Calrossie Mercury Out of
Same Dam as Edellyn Royal Leader*

For Reference Only

Bull

EDELLYN DIAMOND MERCURY 2190521

Roan, calved July 1, 1943. Bred and owned by Thos. E. Wilson, Wilson, Ill.

SIRE

Calrossie Mercury 1957318
White, J. MacGillivray

Calrossie Augusta Opal 179796
Dark roan, J. MacGillivray

Balthayock Grand National (283376)
Red, R. Wylie Hill

DAM

Coldock Bonny Rothes 2031989
Roan, W. McNair Snadden

Coldock Rothes Fairy (162726)
Red, W. McNair Snadden

(Collynie Royal Leader 1492017
Roan, Duthie Webster
Calrossie Princess Mona (88108)
Dark roan, J. MacGillivray

(Calrossie Nonpareil Chief (262369)
Dark roan, J. MacGillivray
Calrossie Augusta Polly (140698)
Red, J. MacGillivray

(Calrossie Grand National (268894)
Dark roan, John MacGillivray
Balthayock Victoria 26th (158733)
Roan, R. Wylie Hill

(Collynie Red Eagle (214703)
Dark roan, Duthie Webster
Coldock Rothes Queen 2d 67638
Red, W. McNair Snadden

• • •

SALTOUN SQUADRON LEADER

—Purchased at Perth, 1946, where he stood third in the younger March class and bred to order for service at Edellyn. He represents no violent outcross but a further infusion of blood-lines already well established in the herd thru the Mercurys and Royal Leaders. His sire won his class at Perth, 1944, and sold for 1700 gns. to Capt. Fletcher. His dam is also the dam of Saltoun Air Marshall, first at Perth, 1945 and sold to Laidlow Smith of Pitodrie for 2,000 gns. Aldie Conqueror, a grandson of Collynie Royal Leader, recognized as one of the greatest sires of the breed today; and the dam is by a grandson of Naemoor Jasper, the combination of which has produced the world's best bulls.



Saltoun Squadron Leader

*A Grand Combination of Old Country
Breeding and Individual Merit*

Bull

For References Only

SALTOUN SQUADRON LEADER 2371578

Dark roan, calved March 23, 1945. Bred by A. M. T. Fletcher, Pencaitland, East Lothian, Scotland; Imp. June 6, 1946 by and owned by Thos. E. Wilson, Wilson, Ill.

SIRE

Uppermill Sentinel (325869)
Red, James Durno

Aldie Conqueror (261324)
Dark roan, Finlay MacGillivray

Secret Sally (197300)
Red, James Durno

Calrossie Endeavor (297338)
Red, John MacGillivray

DAM

Rosebud Brenda (250954)
Dark roan, K. P. MacGillivray

Rosebud Bertha (230687)
Roan, K. P. MacGillivray

(Calrossie Satisfaction (249387)
Dark roan, John MacGillivray
Gladys Cooper (140696)
Red, Finlay MacGillivray

(Calrossie Signet (275442)
Dark roan, John MacGillivray
Secret Poppy (147835)
Roan, James Durno

(Calrossie Randolph (275440)
Dark roan, John MacGillivray
Calrossie Rosewood Beres (110144)
Red, John MacGillivray

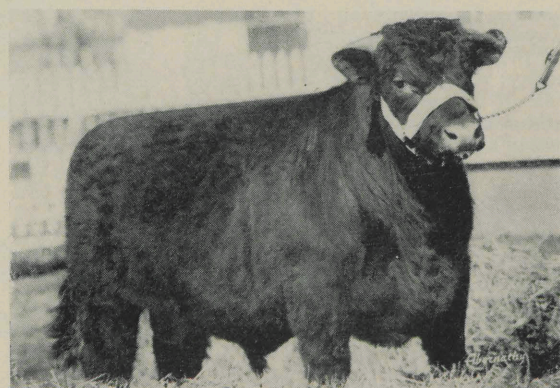
(Aldie Edwin (297318)
Red, Finlay MacGillivray
Rosebud Briar (189821)
Roan, K. P. MacGillivray



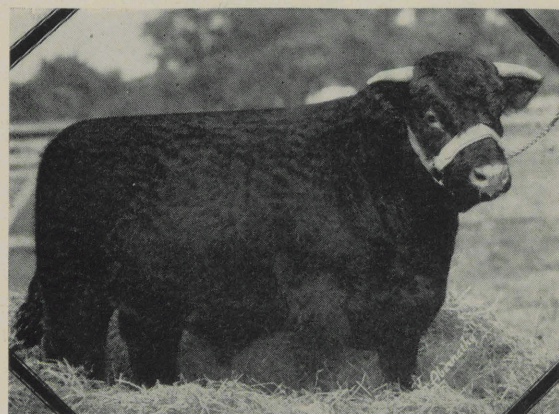
INTERNATIONAL SHORTHORN

1946

EDELLYN ROYAL LEADER 29TH—High selling bull of the 1946 Congress, selling to P. A. Rasmussen and Sons of Iowa. This was the third consecutive Edellyn Royal Leader bull out of Calrossie Mercury dams to win this honor. From the very family that produced Browndale Count, he inherits the three blood lines that have been responsible for the high standard of Edellyn Shorthorns.



Edellyn Royal Leader 29th



Edellyn Royal Leader 21st

1945

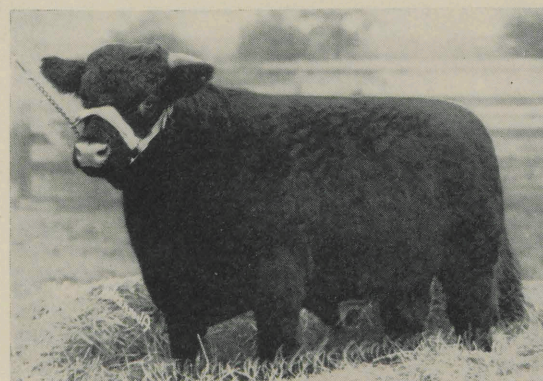
EDELLYN ROYAL LEADER 21ST—Grand champion and high selling bull of the 1945 Congress, selling to Hal Williams of California. Sired by Edellyn Royal Leader and out of a Calrossie Mercury dam, who was a full sister to the 1943 champion and a full sister to the dam of the 1944 winner. From Edellyn's famous Broadhooks family, this bull has made a tremendous impression in California by the excellence of his calves.



CONGRESS LEADERS

1944

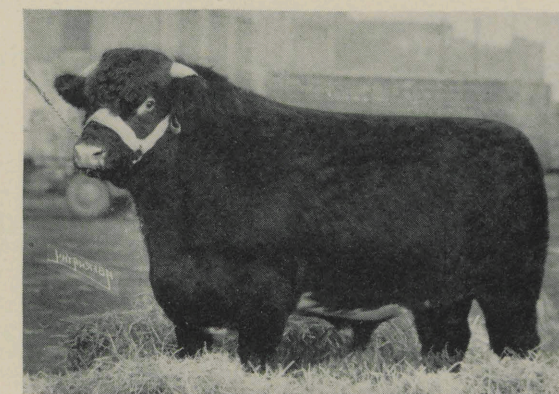
EDELLYN ROYAL LEADER 11th—Grand champion and high selling bull of the 1944 Congress, selling to Byron Hawks of Washington. Sired by the All-American favorite and out of one of Calrossie Mercury's top daughters, this bull is a blood brother to the 1945 winner and his dam is a full sister to the 1943 champion. As one of our best judges said recently: "He is sure siring a popping bunch of calves for Byron."



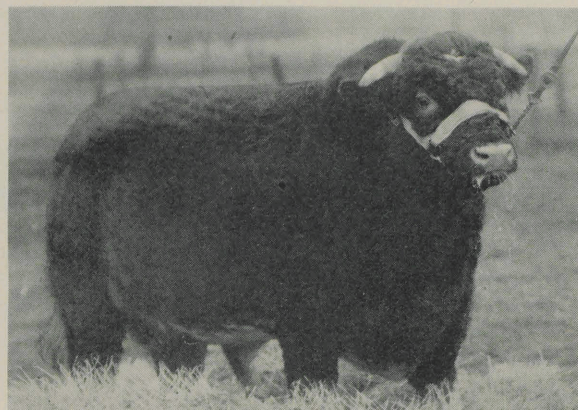
Edellyn Royal Leader 11th

1943

EDELLYN ROMAN MERCURY—Grand champion and high selling bull of the 1943 Congress, selling to Harry Greene and Capt. Cyril Mumford of Ontario. Sired by the Perth champion, Calrossie Mercury and out of Collynie Broadhooks 12th the great foundation cow of this family. His first two bull calves were the tops of the 1946 February sale in Ontario and from the general excellence of his calves he is one of the leading breeding bulls in Canada.



Edellyn Roman Mercury



Edellyn Formost Mercury

• • •
EDELLYN FORMOST MERCURY—A favorite son of Calrossie Mercury out of one of the greatest cows in America. He is a full brother to the dam of Edellyn Royal Leader 23rd and Edellyn Royal Leader 46th, outstanding Leaders held back for service. He is out of the same dam as the top bull of last year's sale. He was used as herd bull insurance for the past year and his calves are on display. They are the thick lowset compact type that will win at the shows. We are retaining another outstanding Mercury for herd bull insurance and passing on to you a real breeding bull. Have a look at Edellyn Utmost Mercury in this sale. (Lot 14)

*A Calrossie Mercury
 of Proven Worth
 See his Calves.*

Lot 1

Bull

EDELLYN FORMOST MERCURY 2247140 (RE 979)

Dark roan, calved June 6, 1944. Bred and owned by Thos. E. Wilson, Wilson, Ill.

Calrossie Control (255913)
 White, J. MacGillivray

(Collynie Royal Leader (1492017)
 Roan, Duthie Webster
 Calrossie Princess Mona (88108)
 Dark Roan, J. MacGillivray

SIRE
 Calrossie Mercury 1957318
 White, J. MacGillivray

Calrossie Augusta Opal (179796)
 Dark roan, J. MacGillivray

(Calrossie Nonpareil Chief (262869)
 Dark roan, J. MacGillivray
 Calrossie Augusta Polly (140698)
 Red, J. MacGillivray

Sundial (267072)
 Roan, J. Durno

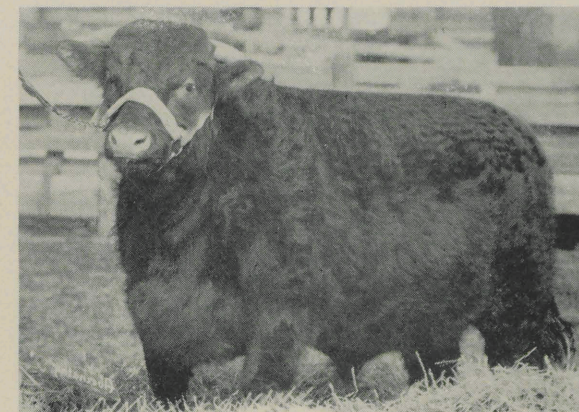
(Larbert Ensign (251898)
 White, P. F. Jones
 Secret Sunray (127960)
 Red, J. & L. Durno

DAM
 Scotston Jealous Jean (Imp) 1917365
 Red, William B. Robertson

Jealousy (132707)
 Dark roan, J. & D. Robertson

(Glastullich Diamond (223298)
 Dark roan, W. MacGillivray
 Naemoor Jealousy 4th V-65-984E
 Dark roan, J. J. Moubray

• • •
EDELLYN ROYAL LEADER 43RD is a full brother to Edellyn Royal Leader 11th, grand champion and high selling bull of the 1944 International Shorthorn Congress, selling to Byron Hawks at \$6,750. He is also a blood brother, being by the same sire and out of a full sister, to Edellyn Royal Leader 21st, grand champion and high selling bull at the 1945 International Congress, selling to Hal Williams at \$7,000. His dam is a full sister to Edellyn Roman Mercury, the champion and high selling bull of the 1943 International Congress, selling to Harry Greene and Capt. Mumford of Canada at \$3,650. An outstanding member of our 1946 show herd he combines the best of everything at Edellyn.



Edellyn Royal Leader 43rd

*An Edellyn Royal Leader
 Whose Kin have been the Champions*

Bull

Lot 2

EDELLYN ROYAL LEADER 43D 2322791 (RE 1072)

Red, calved Sept. 23, 1945. Bred and owned by Thos. E. Wilson, Wilson, Ill.

Coldoch Sensation (275892)
 Red, W. M. Snadden

(Bapton Crocus Leader (261766)
 Red, Bapton Shorthorn Co.
 Aldie Rosemary (160049)
 Red, Finlay MacGillivray

SIRE
 Edellyn Royal Leader 2057560
 Red, W. McNair Snadden

Coldoch Bonny Rothes 2031989
 Roan, W. McNair Snadden

(Balthayock Grand National (283376)
 Dark roan, R. Wylie Hill
 Coldoch Rothes Fairy (162726)
 Red, W. McNair Snadden

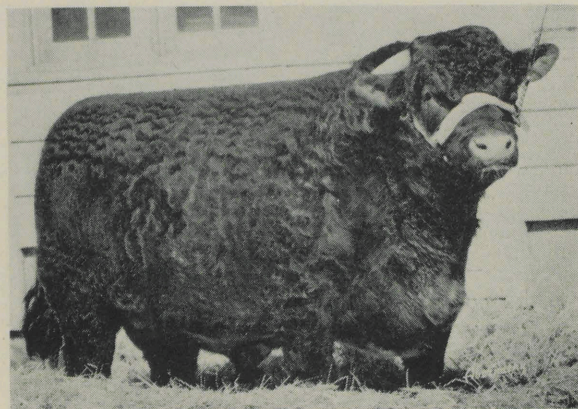
Calrossie Mercury 1957318
 White, John MacGillivray

(Calrossie Control (255913)
 White, John MacGillivray
 Calrossie Augusta Opal (179796)
 Dark roan, John MacGillivray

DAM
 Edellyn Broadhooks 13th 2024081
 Red, Thos. E. Wilson

Collynie Broadhooks 12th (Imp)
 1773004
 Red, Duthie Webster

(Bapton Boxing Day 1772969
 Red, C. H. E. Chubb
 Stella 11th 1489198
 Roan, Mrs. Duncan Stewart



Edellyn Reserve Mercury

. . .
EDELLYN RESERVE MERCURY is out of a half sister to Edellyn Royal Leader, a cow worthy of being the dam of a great breeding bull. This bull is impressive in his extreme smoothness, depth of body, full quarters, rich color, rugged bone and one look at his picture will indicate a real masculine head. This is imported breeding at its very best, thru the two blood lines that have done the most for Edellyn. This is one of the good bulls backed by the best MacGillivray breeding.

*A Calrossie Mercury Out of
A Half Sister to Edellyn Royal Leader*

Lot 3

Bull

EDELLYN RESERVE MERCURY 2322796 (RE 1058)

Red, calved Sept. 2, 1945. Bred and owned by Thos. E. Wilson, Wilson, Ill.

Calrossie Control (255913)
White, John MacGillivray

{ Callynie Royal Leader 1492017
Roan, Duthie Webster
Calrossie Princess Mona (88108)
Dark roan, John MacGillivray

SIRE
Calrossie Mercury 1957318
White, John MacGillivray

Calrossie Augusta Opal (179796)
Dark roan, John MacGillivray

{ Calrossie Nonpareil Chief (262369)
Dark roan, John MacGillivray
Calrossie Augusta Polly (140698)
Red, John MacGillivray

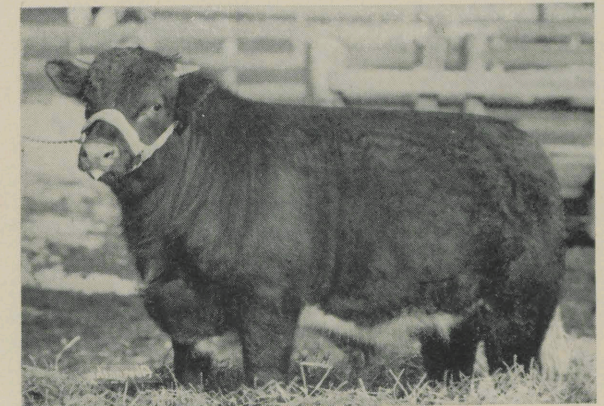
Coldoch Sensation (275892)
Red, W. M. Snadden

{ Bapton Crocus Leader (261766)
Red, Bapton Shorthorn Co.
Aldie Rosemary (160049)
Red, Finlay MacGillivray

DAM
Coldoch Marina (Imp) 2084398
Red, W. McNair Snadden

Aldie Princess Betty (160047)
Dark roan, Finlay MacGillivray

{ Calrossie Upright (235702)
Red, John MacGillivray
Aldie Princess Mary (110112)
Roan, Finlay MacGillivray



Edellyn Royal Leader 53d

. . .
EDELLYN ROYAL LEADER 53RD—A full brother to Edellyn Royal Leader 9th now in service in the Blotz Bros. herd in Wisconsin and who is the sire of lots 31 and 35 in this sale. Out of the dam of Edellyn Mission Mercury the Nelson trophy and International first prize winner. Goldie 8th was one of top heifers in the Beath Sale and Edellyn Goldie 6th is one of the best cows in the Beath herd. These are all low set thick cattle.

*A Royal Leader Bred
To Be Low Set*

Bull

Lot 4

EDELLYN ROYAL LEADER 53D 2379060 (RE 1112)

Dark roan, calved June 19, 1946. Bred and owned by Thos. E. Wilson, Wilson, Ill.

Coldoch Sensation (275892)
Red, W. M. Snadden

{ Bapton Crocus Leader (261766)
Red, Bapton Shorthorn Co.
Aldie Rosemary (160049)
Red, Finlay MacGillivray

SIRE
Edellyn Royal Leader 2057560
Red, W. McNair Snadden

Coldoch Bonny Rothes 2031989
Roan, W. McNair Snadden

{ Balthayock Grand National (283376)
Dark roan, R. Wylie Hill
Coldoch Rothes Fairy (162726)
Red, W. McNair Snadden

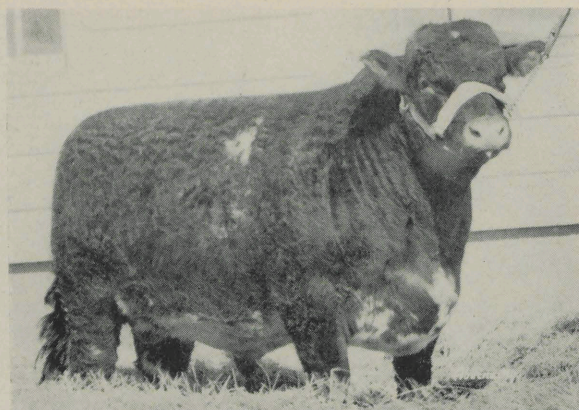
Roland Clipper (225957)
Red Beath Farms

{ Drynie Roland 1853433
Roan, R. Maclean
Clipper 5th (261583)
Red, Beath Farms

DAM
Goldie 8th 1983560
Roan, Beath Farms

Edellyn Goldie 6th 1843534
Roan, Thos. E. Wilson

{ Raveni Leader 1680652
Roan, T. Dorsey Jones
Doune Goldie 12th 1558571
Roan, Earl of Moray



Edellyn Minardo Mercury

• • •
EDELLYN MINARDO MERCURY — A beautifully bred son of Calrossie Mercury out of a very typy, very smooth and thick fleshed granddaughter of Calrossie Lord Rothes, the 1930 International junior champion and the next dam one of the famous imported Collynie cows by Rosehaugh Mandarin. Sons of Calrossie Mercury have done a wonderful job wherever they have gone and this good headed bull will improve a good herd.

*A Calrossie Mercury Out of
 A Grand-Daughter of Calrossie
 Lord Rothes*

Lot 5

Bull

EDELLYN MINARDO MERCURY 2322795 (RE 1065)

Roan, calved Nov. 16, 1945. Bred and owned by Thos. E. Wilson, Wilson, Ill.

SIRE

Calrossie Mercury 1957318
 White, John MacGillivray

Calrossie Control (255913)
 White, John MacGillivray

Calrossie Augusta Opal (179796)
 Dark roan, John MacGillivray

Glenburn Envoy 1946465
 Red, F. H. Deacon

DAM

E. Fairy Ring 6th 2023028
 Red, Leo P. Duer

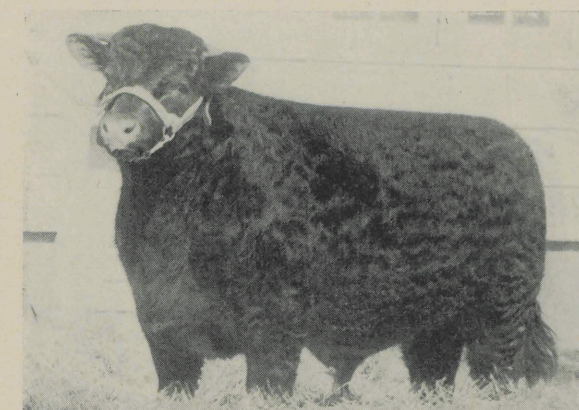
Edellyn Fairy Ring 3d 1803421
 Red, Thos. E. Wilson

{ Collynie Royal Leader 1492017
 Roan, Duthie Webster
 { Calrossie Princess Mona (88108)
 Dark roan, John MacGillivray

{ Calrossie Nonpareil Chief (262369)
 Dark roan, John MacGillivray
 { Calrossie Augusta Polly (140698)
 Red, John MacGillivray

{ Melba's McDuff 1875671
 Red, J. E. Leask
 { Glenburn Clara 6th 1986449
 Red, F. H. Deacon

{ Calrossie Lord Rothes 1634147
 Roan, John MacGillivray
 { Collynie Fairy Ring (Imp.) 1517884
 Roan, Duthie Webster



Edellyn Royal Leader 50th

• • •
EDELLYN ROYAL LEADER 50th is sired by the only bull ever to beat Sni-A-Bar Control in the show ring, and out of a granddaughter of Cruggleton Aspiration, the \$95,000 bull in the Argentine. The grand dam is sired by a son of the International grand champion, Sni-A-Bar Ensign. In 1946 Oklahoma A. & M. College purchased a very sweet heifer out of the same dam and in 1945 Lomas Farms bought a daughter bred to Edellyn Royal Leader and got a real herd bull.

*A Royal Leader Out of
 A Daughter of Cruggleton Aspiration*

Bull

Lot 6

EDELLYN ROYAL LEADER 50TH 2379057 (RE 1122)

Red, calved May 10, 1946, bred and owned by Thomas E. Wilson, Wilson, Ill.

SIRE

Edellyn Royal Leader 16th 2222171
 Red, Thos. E. Wilson

Edellyn Royal Leader 2057560
 Red, M. McNair Snadden

Maxwalton Jealousy 23d 1975877
 Roan, Maxwalton Farms, Inc.

Cruggleton Aspiration 1989959
 Red, A. J. Marshall

DAM

Sni-A-Bar Lavender 7th 2083330
 Red, Sni-A-Bar Farms

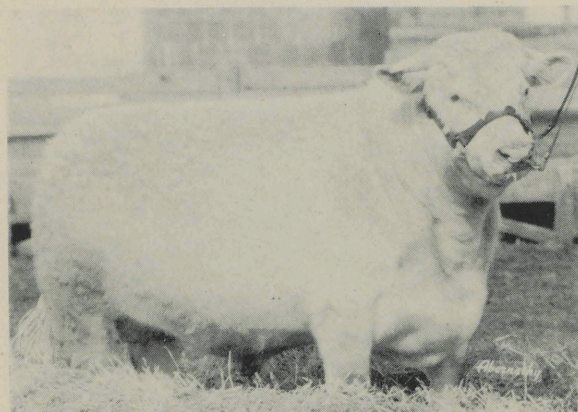
Lavender Girl 15th 1966656
 Red, McNeill Bros.

{ Coldoch Sensation (275892)
 Red, W. M. Snadden
 { Coldoch Bonny Rothes 2031989
 Roan, W. McNair Snadden

{ Browndale Cumberland 1883723
 Roan, T. Dorsey Jones
 { Maxwalton Jealousy 18th 1792449
 Red, Reid Carpenter

{ Cruggleton Captivator (276163)
 RLW, A. J. Marshall
 { Augusta Gardenia (120936)
 Dark roan, A. J. Marshall

{ Sni-A-Bar Baron Gipsy 1869550
 Red, Sni-A-Bar Farms
 { Lavender Girl 11th 1876628
 Red, McNeill Bros.



Edellyn Starry Mercury

• • •
EDELlyn STARRY MERCURY is out of the same dam as Edellyn Royal Leader 2nd, the outstanding breeding bull in the Cherry Hill herd. Here is the best Calrossie breeding concentrated in a bull that stood high up in the summer class at last year's shows. Sired by a Perth champion and out of a cow that is a half sister to a Perth champion and with three crosses of Calrossie Control in his pedigree it is a safe bet that he will carry on this line of breeding with distinction.

*A Mercury Out of the
Same Dam as Edellyn Royal Leader 2nd*

Lot 7

Bull

EDELlyn STARRY MERCURY 2322797 (RE 1040)

White, calved May 23, 1945. Bred and owned by Thos. E. Wilson, Wilson, Ill.

Calrossie Control (255913)
White, John MacGillivray

(Collynie Royal Leader 1492017
Roan, Duthie Webster
Calrossie Princess Mona (88108)
Dark roan, John MacGillivray

SIRE

Calrossie Mercury 1957318
White, John MacGillivray

Calrossie Augusta Opal (179796)
Dark roan, John MacGillivray

(Calrossie Nonpareil Chief (262369)
Dark roan, John MacGillivray
Calrossie Augusta Polly (140698)
Red, John MacGillivray

Calrossie Sweepstake (290897)
Red, John MacGillivray

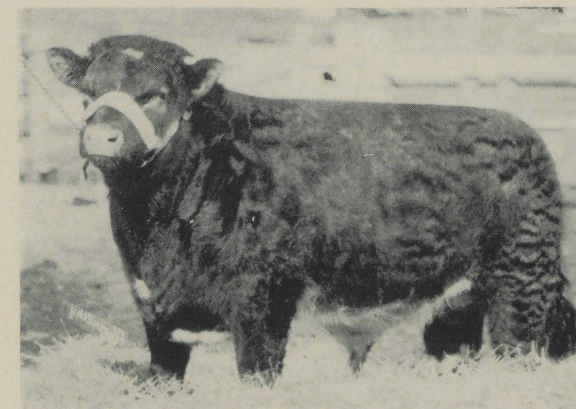
(Calrossie Randolph (275440)
Dark roan, John MacGillivray
Calrossie Broadhooks Maggie (150434)
Red, John MacGillivray

DAM

Bertha (Imp.) 2069643
Roan, James Durno

Bridget (207355)
Dark roan, James Durno

(Calrossie Signet (275442)
Dark roan, John MacGillivray
Butterscotch (137995)
Red, James Durno



Edellyn Royal Leader 52nd

• • •
EDELlyn ROYAL LEADER 52nd—A full brother to Edellyn Royal Leader 39th purchased last year by Sumption Bros. of S. Dak. He is also a full brother to Edellyn Broadhooks 24th, one of Leaders best daughters, purchased by Curtiss Candy Co. He is of the same family that produced the champions at the International Congress in 1943-44 and 45 and sired by the same bull as the last two. Edellyn Command was the grand sire of Tomahawk, the International grand champion steer. Edellyn Broadhooks 6th is the dam of the two Broadhooks heifers in our last year's show string.

*A Royal Leader
From the Family of Champions*

Bull

Lot 8

EDELlyn ROYAL LEADER 52D 2379059 (RE 1119)

Dark roan, calved June 3, 1946. Bred and owned by Thos. E. Wilson, Wilson, Ill.

Coldoch Sensation (275892)
Red, W. M. Snadden

(Bapton Crocus Leader (261766)
Red, Bapton Shorthorn Co.
Aldie Rosemary (160049)
Red, Finlay MacGillivray

SIRE

Edellyn Royal Leader 2057560
Red, W. McNair Snadden

Coldoch Bonny Rothes 2031989
Roan, W. McNair Snadden

(Balthayock Grand National (283376)
Dark roan, R. Wylie Hill
Coldoch Rothes Fairy (162726)
Red, W. McNair Snadden

Edellyn Command 2000000
Roan, Chas. A. Linzee Gordon

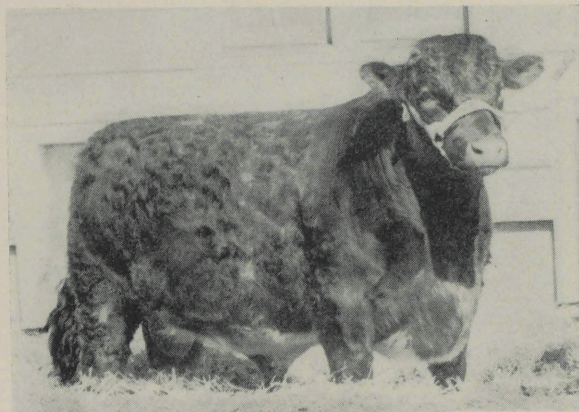
(Calrossie Command (275428)
Dark roan, J. MacGillivray
Cluny Rosewood 33d 1917362
Red, Chas. A. Linzee Gordon

DAM

Edellyn Broadhooks 12th 2014786
White, Thos. E. Wilson

Edellyn Broadhooks 6th 1929053
Roan, Thos. E. Wilson

(Brawith Count 1846144
Roan, David Douglas
Edellyn Broadhooks 4th 1852318
Roan, Thos. E. Wilson



Edellyn Reliant Mercury

• • •
EDELLYN RELIANT MERCURY—A full brother to Edellyn Ian Mercury siring such wonderful calves for Russell Broughton of Ill.; also a full brother to Edellyn Buttercup 4th, purchased by Geo. Rossetter in our 1944 sale; also full brother to Edellyn Renown Mercury purchased by Geo. Cox of North Dakota at \$6,200. Out of one of the tops of the T. A. Russell Dispersion, his grand dam is sired by Naemoor Ian, the sire of the dam of Calrossie Control, Calrossie Prince Peter and Calrossie Royal Emblem, all winners of the Supreme Championship at Perth. There is thickness of flesh bred into this bull.

A Calrossie Mercury of Extreme Smoothness and Thickness of Flesh

Lot 9

Bull

EDELLYN RELIANT MERCURY 2354624 (RE 1078)

Dark roan, calved Jan. 12, 1946. Bred and owned by Thos. E. Wilson, Wilson, Ill.

Calrossie Control (255913)
 White, J. MacGillivray

(Collynie Royal Leader 1492017
 Roan, Duthie Webster
 Calrossie Princess Mona (88108)
 Dark roan, J. MacGillivray

SIRE
 Calrossie Mercury 1957318
 White, J. MacGillivray

Calrossie Augusta Opal (179796)
 Dark roan, J. MacGillivray

(Calrossie Nonpareil Chief (262369)
 Dark roan, J. MacGillivray
 Calrossie Augusta Polly (140698)
 Red, J. MacGillivray

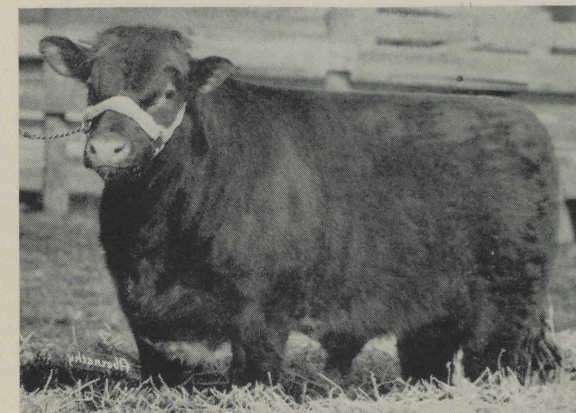
Brae Lodge Footprint (219078)
 Dark roan, T. A. Russell

(Collynie Marathon (211679)
 Dark roan, Duthie Webster
 Puslinch Flower Girl 2d 1578800
 Roan, A. G. Auld

DAM
 Brae Lodge Buttercup 5th 2054978
 Red, T. A. Russell

Glastullich Buttercup (Imp.) 1986448
 Red, W. MacGillivray

(Naemoor Ian (209839)
 Red, J. J. Moubray
 Strowan Buttercup 36th (8000)
 Roan, C. N. Graham Stirling



Edellyn Royal Leader 54th

• • •
EDELLYN ROYAL LEADER 54th—A full brother to Edellyn Royal Leader 21st, the 1945 International Shorthorn Congress grand champion that sold to Hal Williams of California for \$7,000. He is by the same sire and is out of a full sister as Edellyn Royal Leader 11th, the 1944 Congress champion that Byron Hawks of Wash. bought at \$6,750 and also Edellyn Royal Leader 43rd, selling in this sale as Lot 2. A Royal Leader out of a Mercury daughter of Collynie Broadhooks 12th is a wonderful recommendation, considering their performance.

A Royal Leader Out of a Calrossie Mercury Dam

Bull

Lot 10

EDELLYN ROYAL LEADER 54TH 2379061 (RE 1115)

Red, calved June 25, 1946. Bred and owned by Thos. E. Wilson, Wilson, Ill.

Coldoch Sensation (275892)
 Red, W. M. Snadden

(Bapton Crocus Leader (261766)
 Red, Bapton Shorthorn Co.
 Aldie Rosemary (160049)
 Red, Finlay MacGillivray

SIRE
 Edellyn Royal Leader 2057560
 Red, W. McNair Snadden

Coldoch Bonny Rothes 2031989
 Roan, W. McNair Snadden

(Balthayock Grand National (283376)
 Dark roan, R. Wylie Hill
 Coldoch Rothes Fairy (162726)
 Red, W. McNair Snadden

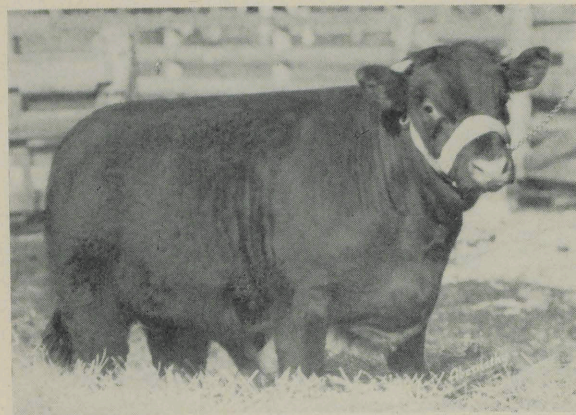
Calrossie Mercury 1957318
 White, J. MacGillivray

(Calrossie Control (255913)
 White, J. MacGillivray
 Calrossie Augusta Opal (179796)
 Dark roan, J. MacGillivray

DAM
 Edellyn Broadhooks 15th 2071118
 Red, Thos. E. Wilson

Collynie Broadhooks 12th (Imp.)
 1773004
 Red, Duthie Webster

(Bapton Boxing Day 1772969
 Red, C. H. E. Chubb
 Stella 11th 1489198
 Roan, Mrs. Duncan Stewart



Edellyn Favorite Mercury

. . .
EDELlyn FAVORITE MERCURY is out of one of the best of our Collynie cows, and who was the dam of Edellyn Sultan Royal, the sire of Khan Sultan, the International junior champion. She was also the dam of Edellyn Golden Drop, the top of our 1938 sale and now one of the top cows at Marellbor, having produced one International first prize winner. This calf is a full brother to Edellyn Golden Drop 4th, second high open heifer in our 1944 sale, selling to Geo. Rossetter. She is now a very valuable brood cow. This could be one of the best buys yet.

*A Calrossie Mercury Out of
A Famous Collynie Cow*

Lot 11

Bull

EDELlyn FAVORITE MERCURY 2379048 (RE 1117)

Red, calved July 25, 1946. Bred and owned by Thos. E. Wilson, Wilson, Ill.

Calrossie Control (255913)
White, J. MacGillivray

{ Collynie Royal Leader 1492017
Roan, Duthie Webster
{ Calrossie Princess Mona (88108)
Dark roan, J. MacGillivray

SIRE
Calrossie Mercury 1957318
White, J. MacGillivray

Calrossie Augusta Opal (179796)
Dark roan, J. MacGillivray

{ Calrossie Nonpareil Chief (262369)
Dark roan, J. MacGillivray
{ Calrossie Augusta Polly (140698)
Red, J. MacGillivray

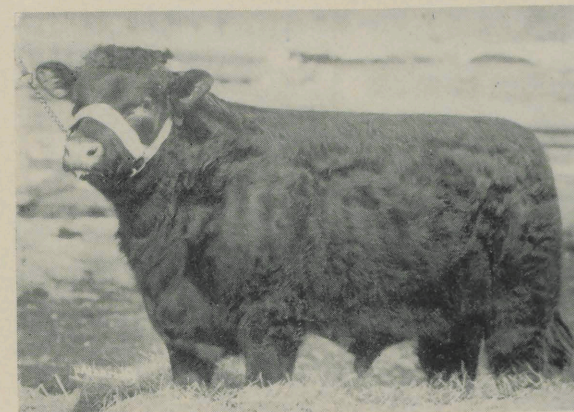
Golden Knight 1772989
Red, H. M. Duncan

{ Kinellar Joker (224168)
Red, S. Campbell
{ Royal Golden Drop 7th (48051)
Roan, H. M. Duncan

DAM
Pure Golden Drop 1773063
Roan, Duthie Webster

Royal Golden Drop 12th 1773074
Roan, H. M. Duncan

{ Balcairn Reliance 1772968
Roan, F. L. Wallace
{ Royal Golden Drop 2d 1773073
Red, H. M. Duncan



Edellyn Royal Leader 51st

. . .
EDELlyn ROYAL LEADER 51st is out of the grand dam of Edellyn Royal Leader 10th, now in service at Ohio State University. He is a full brother to Edellyn Royal Leader 17th, owned by Otto Johnson of Wis., and Edellyn Royal Leader 38th owned by Holecek Bros. of Montana. The record of performance of this family of Clippers is your guarantee of success with this calf. Brawith Clipper was one of the tops in the James Douglas sale and her calves always have done well.

*A Royal Leader from
A Real Bull Producing Family*

Bull

Lot 12

EDELlyn ROYAL LEADER 51ST 2379058 (RE 1120)

Red, calved June 3, 1946. Bred and owned by Thos. E. Wilson, Wilson, Ill.

Coldoch Sensation (275892)
Red, W. M. Snadden

{ Bapton Crocus Leader (261766)
Red, Bapton Shorthorn Co.
{ Aldie Rosemary (160049)
Red, Finlay MacGillivray

SIRE
Edellyn Royal Leader 2057560
Red, W. McNair Snadden

Coldoch Bonny Rothes 2031989
Roan, W. McNair Snadden

{ Balthayock Grand National (283376)
Dark roan, R. Wylie Hill
{ Coldoch Rothes Fairy (162726)
Red, W. McNair Snadden

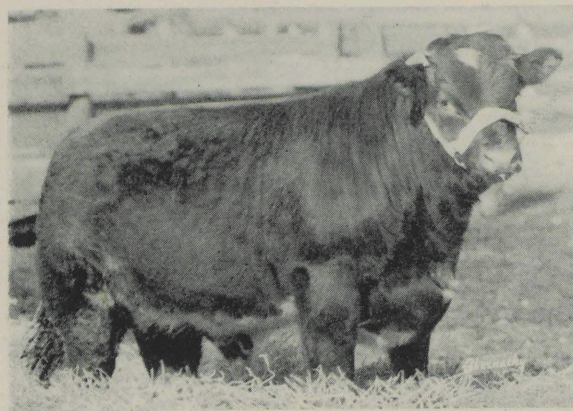
Brawith Boy 1836058
Roan, Hugh S. Black

{ Collynie Democrat (243063)
Red, D. Webster
{ Schivas Bonnie Bud (116272)
Dark roan, J. R. Burr

DAM
Brawith Clipper 1941447
Roan, James Douglas & Sons

Glenburn Clipper 2d 1841722
Roan, F. H. Deacon

{ Glenburn Coronet (209576)
Red, F. H. Deacon
{ Edellyn Clipper 8th 1671072
Roan, Thos. E. Wilson



Edellyn Forward Mercury

• • •
EDELLYN FORWARD MERCURY—A full brother to Edellyn Formost Mercury selling as Lot 1 in this sale. He is out of the same dam as Edellyn Royal Leader 33rd, the top of last year's sale and he is also a full brother to the dam of Edellyn Royal Leader 23rd, our junior herd sire. This bull is out of a wonderful cow, one that is so good that we are keeping her daughters in the herd. We recommend this bull very highly.

*A Calrossie Mercury
 Full Brother to Edellyn Formost Mercury*

Lot 13

Bull

EDELLYN FORWARD MERCURY 2379050 (RE 1110)

Dark roan, calved June 28, 1946. Bred and owned by Thos. E. Wilson, Wilson, Ill.

Calrossie Control (255913)
 White, J. MacGillivray

(Collynie Royal Leader 1492017
 Roan, Duthie Webster
 Calrossie Princess Mona (88108)
 Dark roan, J. MacGillivray

SIRE
 Calrossie Mercury 1957318
 White, J. MacGillivray

Calrossie Augusta Opal (179796)
 Dark roan, J. MacGillivray

(Calrossie Nonpareil Chief (262869)
 Dark roan, J. MacGillivray
 Calrossie Augusta Polly (140698)
 Red, J. MacGillivray

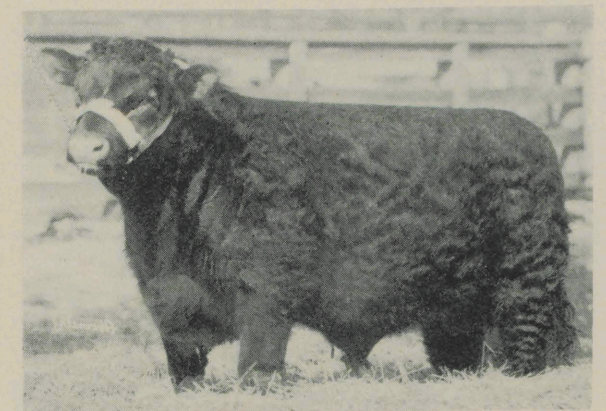
Sundial (267072)
 Roan, J. Durno

(Larbert Ensign (251898)
 White, P. F. Jones
 Secret Sunray (127960)
 Red, J. & L. Durno

DAM
 Scotston Jealous Jean (Imp.) 1917365
 Red, William B. Robertson

Jealousy (132707)
 Dark roan, J. & D. Robertson

(Glastullich Diamond (223298)
 Dark roan, J. MacGillivray
 Naemoor Jealousy 4th V-65-984E
 Dark roan, J. J. Moubray



Edellyn Utmost Mercury

• • •
EDELLYN UTMOST MERCURY—A son of Edellyn Formost Mercury selling as Lot 1 in this sale. Formost is out of the same dam as Edellyn Royal Leader 33rd, the top of last year's sale. He is a full brother to the dam of Edellyn Royal Leader 23rd, undefeated senior yearling bull last year. This calf's dam was a show heifer and won at Denver and was champion at Wisconsin. Her full sister was undefeated in fall shows last year and another full sister is coming along for next year. From the family that produces good ones every year.

*A Formost Mercury Out of
 A Edellyn Royal Leader Dam*

Bull

Lot 14

EDELLYN UTMOST MERCURY 2379065 (RE 1127)

Red, calved Aug. 14, 1946. Bred and owned by Thos. E. Wilson, Wilson, Ill.

Calrossie Mercury 1957318
 White, J. MacGillivray

(Calrossie Control (255913)
 White, J. MacGillivray
 Calrossie Augusta Opal (179796)
 Dark roan, J. MacGillivray

SIRE
 Edellyn Formost Mercury 2247140
 Dark roan, Thos. E. Wilson

Scotston Jealous Jean 1917365
 Red, Wm. B. Robertson

(Sundial (267072)
 Roan, J. Durno
 Jealousy (132707)
 Dark roan, J. & D. Robertson

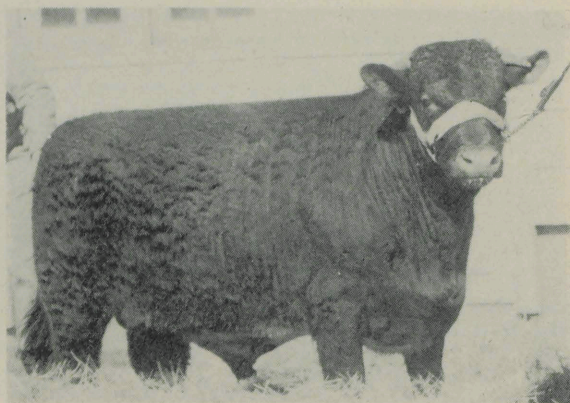
Edellyn Royal Leader 2057560
 Red, W. McNair Snadden

(Coldoch Sensation (275892)
 Red, W. M. Snadden
 Coldoch Bonny Rothes 2031989
 Roan, W. McNair Snadden

DAM
 Edellyn Broadhooks 22d 2186580
 Red, Thos. E. Wilson

Edellyn Broadhooks 6th 1929053
 Roan, Thos. E. Wilson

(Brawith Count 1846144
 Roan, David Douglas
 Edellyn Broadhooks 4th 1852318
 Roan, Thos. E. Wilson



Edellyn Proviso Mercury

• • •
EDELLYN PROVISO MERCURY—A son of the Perth champion and out of an imported in dam cow that carries 7 crosses of the breeding of Robert Duncan, one of the greatest cattlemen of all time. This family produced Pitpointie Herald, a Perth champion and the great bull, William of Orange. The grand dam is the dam of Edellyn Royal Leader 14th, the C. M. Caraway and Sons bull that is breeding so well in Texas. He is out of the same dam as Edellyn Orange Blossom 55th that sold for \$1,525 in our 1945 sale and Edellyn Workman Mercury that sold to Joel Hopkins for \$1,350 in the 1946 sale.

*A Calrossie Mercury from an
 Incomparable Line of Dams*

Lot 15

Bull

EDELLYN PROVISO MERCURY 2354623 (RE 1077)

Red, calved March 3, 1946. Bred and owned by Thos. E. Wilson, Wilson, Ill.

Calrossie Control (255913)
 White, J. MacGillivray

(Collynie Royal Leader 1492017
 Roan, Duthie Webster
 Calrossie Princess Mona (88108)
 Dark roan, J. MacGillivray

SIRE

Calrossie Mercury 1957318
 White, J. MacGillivray

Calrossie Augusta Opal (179796)
 Dark roan, J. MacGillivray

(Calrossie Nonpareil Chief (262369)
 Dark roan, J. MacGillivray
 Calrossie Augusta Polly (140698)
 Red, J. MacGillivray

Pittodrie Workman (305287)
 Red, R. L. Smith

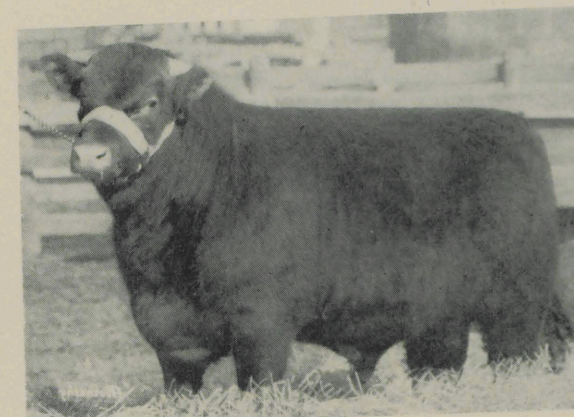
(Pittodrie Jubilee (279002)
 Dark roan, R. L. Smith
 Collynie Lovely 2d (163790)
 Red, R. L. Smith

DAM

Edellyn Orange Blossom 44th (Imp.) 2071081
 Red, Robert L. P. Duncan

Pitpointie Orange Blossom 40th 2031992
 Roan, Robert L. P. Duncan

(Beaufort Legion (255432)
 Dark roan, Lord Lovat
 Pitpointie Orange Blossom 27th (157348)
 Roan, R. L. P. Duncan



Edellyn Royal Leader 49th

• • •
EDELLYN ROYAL LEADER 49th—A calf with a world of red color and breeding behind him. By the All-American Favorite and out of a cow that is all Marshall breeding. Cruggleton Essander is the sire of Cruggleton Captivator that sold in the Argentine in 1937 for \$95,000 and the grand sire of Cruggleton Wellington, one of Marshall's leading sires and the sire of Cruggleton Proud Prince, the outstanding breeding bull in the Arnold Bros. herd.

*A Royal Leader Out of
 An Imported Marshall Dam*

Lot 16

Bull

EDELLYN ROYAL LEADER 49TH 2379056 (RE 1107)

Red, calved May 3, 1946. Bred and owned by Thos. E. Wilson, Wilson, Ill.

Coldoch Sensation (275892)
 Red, W. M. Snadden

(Bapton Crocus Leader (261766)
 Red, Bapton Shorthorn Co.
 Aldie Rosemary (160049)
 Red, Finlay MacGillivray

SIRE

Edellyn Royal Leader 2057560
 Red, W. McNair Snadden

Coldoch Bonny Rothes 2031989
 Roan, W. McNair Snadden

(Balthayock Grand National (283376)
 Dark roan, R. Wylie Hill
 Coldoch Rothes Fairy (162726)
 Red, W. McNair Snadden

Cruggleton Essander (250076)
 Red, A. J. Marshall

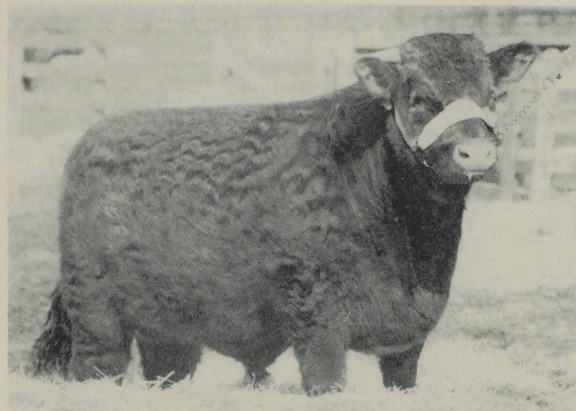
(Cruggleton Colonel (23644)
 Red, A. J. Marshall
 Merry Estelle (120996)
 Red, A. J. Marshall

DAM

Louisa Red Lady (Imp.) 1917363
 Red, A. J. Marshall

Bridgebank Roan Lady 3d (88494)
 Roan, A. J. Marshall

(Bridgebank Annum (187694)
 Dark roan, A. J. Marshall
 Bridgebank Roan Lady (39704)
 Dark roan, A. J. Marshall



Edellyn Fordoun

• • •
EDELLYN FORDOUN—By about the best son of Collynie Royal Barrage, and who was out of the great cow Coldoch Sunshine, the half sister to Edellyn Royal Leader. His dam is sired by a half brother to Calrossie Mercury. Calrossie Fearless purchased at Perth by Lawton, where he sired Lawton Marvel, sold in the Argentine in 1942 for 2,500 pounds. In 1943 his son Kair Banker sold for 2,000 pounds. Klaymor Buttercup 5th was the top female in the 1945 Klaymor sale.

*Combining Barrage, Coldock
 Sensation and Calrossie Control*

Lot 17

Bull

EDELLYN FORDOUN 2380431 (RE 1121)

Red, calved May 7, 1946. Bred by W. J. Russell, Unionville, Ont., Canada, calved property of Thos. E. Wilson, Wilson, Ill.

Collynie Royal Barrage 1873801 { Rosehaugh Mandarin 1726754
 Roan, D. Webster { Roan, Mrs. L. M. R. Fletcher
 { Collynie Butterfly 6th (103413)
 { Roan, Duthie Webster

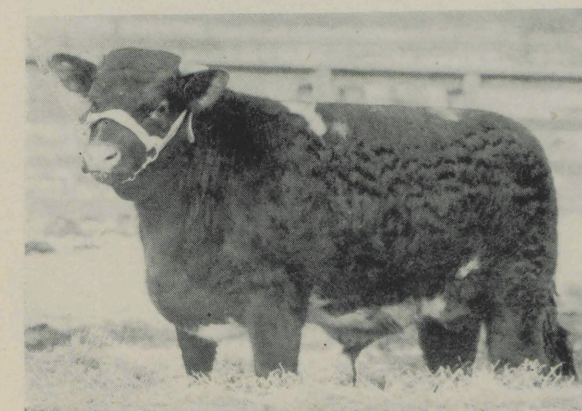
SIRE
 Klaymor Insignia (271521)
 Dark roan, W. J. Russell

Coldoch Sunshine 288202 { Coldoch Sensation (275892)
 Red, W. McNair Snadden { Red, W. McNair Snadden
 { Sheila (176999)
 { Roan, James Durno

Calrossie Fearless (297340) { Calrossie Control (255913)
 Dark roan, John MacGillivray { White, John MacGillivray
 { Calrossie Augusta Susette (189782)
 { Red, John MacGillivray

DAM
 Klaymor Buttercup 5th (Imp.) 2320642
 Red, G. J. C. Anderson

Kair Buttercup 2320640 { Balthayock Orange Command (296347)
 Red, G. J. C. Anderson { Dark roan, R. Wylie Hill
 { Balthayock Buttercup 7th (198543)
 { Red, R. Wylie Hill



Edellyn Control Mercury

• • •
EDELLYN CONTROL MERCURY—Sired by the grand champion Sni-A-Bar Control, grand sire the grand champion Edellyn Campeon Mercury and then the Perth champion, Calrossie Mercury. This calf has everything it takes to continue this continuity and will be a very difficult calf to beat in this year's shows. Out of a very excellent Shallenberger Maud by Cruggleton Aspiration and the next dam by a grandson of Browndale Count.

*A Mercury By the
 Champion Sni-A-Bar Control*

Bull

Lot 18

EDELLYN CONTROL MERCURY 2379049 (RE 1128)

Roan, calved May 13, 1946. Bred by Sni-A-Bar Farms, Grain Valley, Mo., calved property of Thos. E. Wilson, Wilson, Ill.

Edellyn Campeon Mercury 2071109 { Calrossie Mercury 1957318
 White, Thos. E. Wilson { White, J. MacGillivray
 { Collynie Princess 51st 1773024
 { Roan, Duthie Webster

SIRE
 Sni-A-Bar Control 2255555
 White, Sni-A-Bar Farms

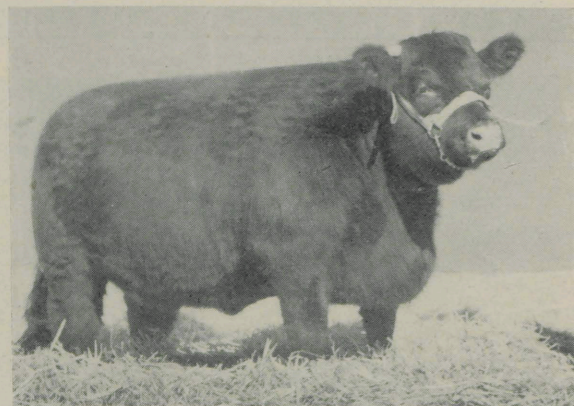
Rosewood Morlunda 1947004 { Edellyn Goldfinder 1786376
 Roan, Oscar Nelson { Roan, Thos. E. Wilson
 { Rosewood 112th 1895463
 { Roan, Beath Farms

Cruggleton Aspiration 1989959 { Cruggleton Captivator (276163)
 Red, A. J. Marshall { RLW, A. J. Marshall
 { Augusta Gardenia (120936)
 { Dark roan, A. J. Marshall

DAM
 Maud 119th 2232065
 Red, Sni-A-Bar Farms

Maud 116th 1895778
 Red, A. C. Shallenberger

Divide Superb 1693191 { Red, The Allen Cattle Co.
 { Maud 94th 1449756
 { Red, A. C. Shallenberger

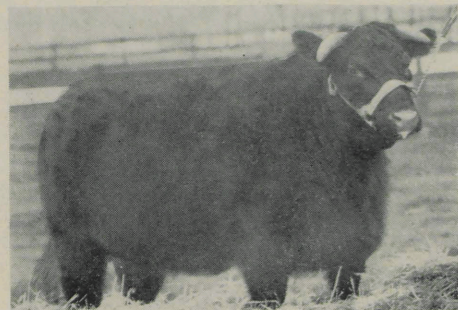


Edellyn Dorothy 21st

Undeclared calf. Reserve champion Illinois, Iowa, Royal and International. Grand at Indiana.

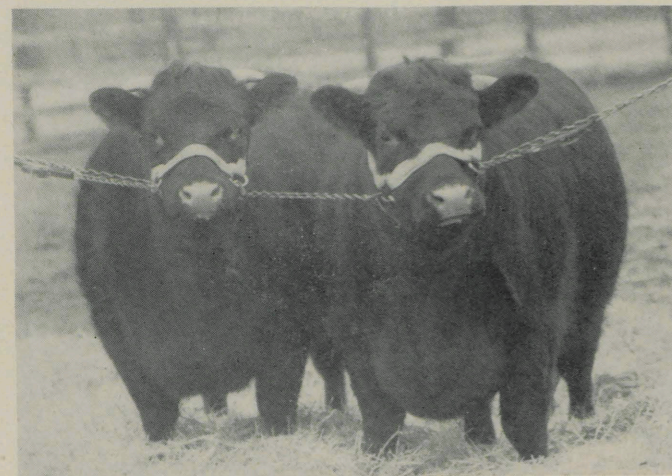
Fair Circuit . . .

Illinois State Fair
Wisconsin State Fair
Iowa State Fair
Indiana State Fair
Kansas City Royal
International Livestock Show



Edellyn Broadhooks 28th

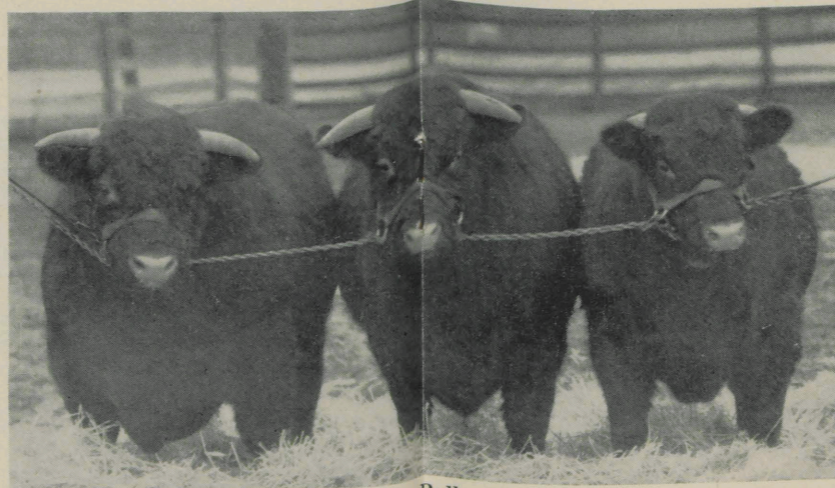
Grand at Wisconsin. Reserve Indiana. First Illinois and Iowa.



Pair of Females

First Wisconsin and Indiana; second all other shows.

EDELLYN'S ALL-AMERICAN PATTERN 1946 MODELS

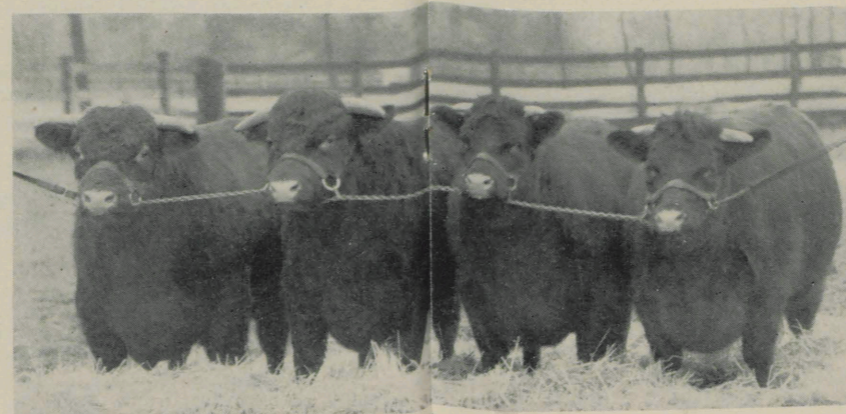


Three Bulls

First Indiana; second Wisconsin and Iowa; third Illinois Royal and International

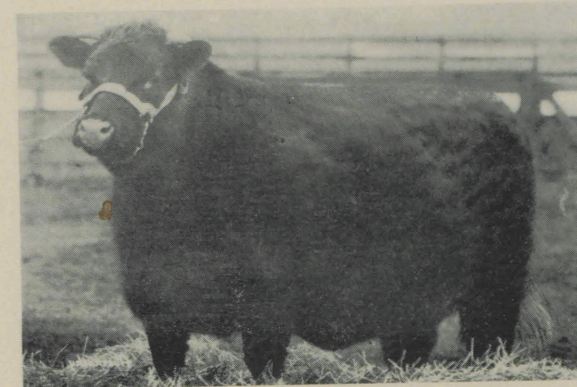


Best 10 Head—Kansas City Royal and International
9 sired by Edellyn Royal Leader, one by a son.



Get of Sire (Edellyn Royal Leader)

First Wisconsin and Indiana; second at all other shows.

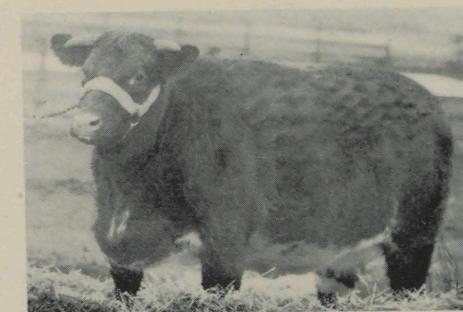


Edellyn Jealousy 5th

First Wisconsin and Iowa; second International.

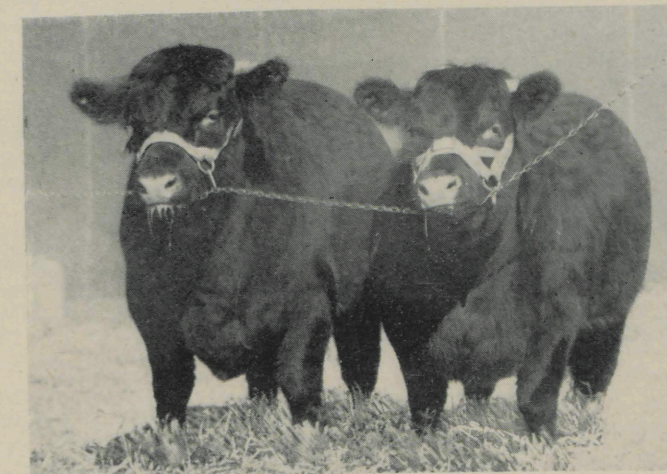
Winners of . . .

9 Championships
Undeclared 10 Head
44 First Prizes
23 Second Prizes
22 Third Prizes
7 Fourth Prizes

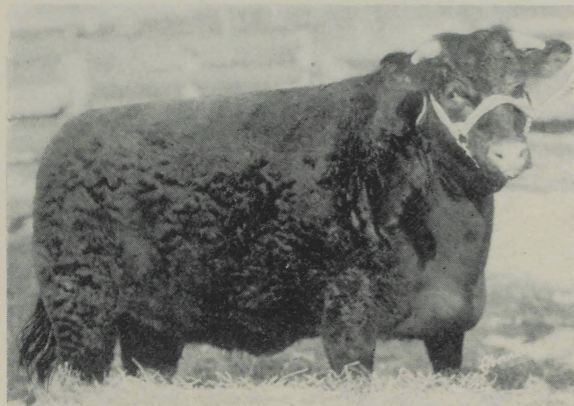


Edellyn Princess Royal 22nd

First Wisconsin and Indiana; third Iowa, Royal and Illinois.



Undeclared Pair of Calves



Edellyn Nonpareil 16th

• • •
EDELlyn NONPAREIL 16th is a grand combination of Edellyn Royal Leader and Marshall breeding. The dam of the 7th is sired by a half brother to Cruggleton Captivator, the \$95,000 bull and the sire of Cruggleton Aspiration, the great Sni-A-Bar bull. Garguston Sovereign, second to the champion at Perth, 1938, and the sire of Cruggleton Perfect, whose calves in 1944 averaged 1,680 pounds, among them being Cruggleton Aircraft, first and second reserve at Perth and the sire of Cruggleton Bounce, Otis Carter's very good herd bull. Viola Nonpareil was one of the tops of the 1942 Allendale sale. Bred to Saltoun Squadron Leader on Nov. 29th.

*A Royal Leader Bred
To Saltoun Squadron Leader*

Lot 19

Cow

EDELlyn NONPAREIL 16TH 2322805 (RE 1046)

Red, calved July 26, 1945. Bred and owned by Thos. E. Wilson, Wilson, Ill.

Edellyn Royal Leader 2057560
Red, W. McNair Snadden

{ Coldoch Sensation (275892)
Red, W. M. Snadden
{ Coldoch Bonny Rothes 2031989
Roan, W. McNair Snadden

SIRE
Edellyn Royal Leader 7th 2197009
Red, Thos. E. Wilson

Zona Nonpareil 1921260
Roan, A. J. Marshall

{ Cruggleton Prosperitas (269664)
Red, A. J. Marshall
{ Deene Nonpareil 3d (105517)
White, G. L. T. Brudenell

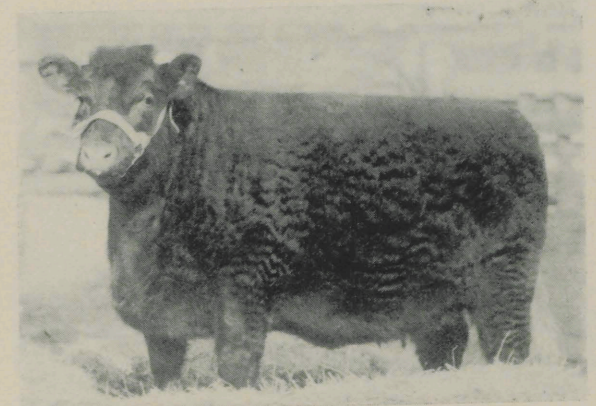
Garguston Sovereign (291047)
Red, S. R. McWilliam

{ Kinellar Observer (258300)
Red, S. Campbell
{ Garguston Augusta 13th (150636)
Dark roan, R. S. McWilliam

DAM
Allendale Nonpareil (Imp.) 1982130
Red, A. J. Marshall

Viola Nonpareil 1982135
Roan, A. J. Marshall

{ Cruggleton Evergreen (269604)
Red, A. J. Marshall
{ Violetta Nonpareil (131220)
Dark roan, A. J. Marshall



Edellyn Beauty 24th

• • •
EDELlyn BEAUTY 24th—A full sister to Edellyn Royal Leader 19th, an outstanding breeding bull, purchased by Dr. S. A. Donahoe of South Dakota in our 1945 sale. Village Beauty A 4th was one of the best heifers in the Sims-Arnold sale and Village Beauty A is considered by Harry Ackerman as one of the top females to leave Edellyn Farms, and she is the dam of Achtoi Field Marshall, sensational calf, purchased by Rudy Boeger from Arnold Bros. in the 1943 International Congress. This heifer has everything to maintain this family's tradition. Bred to Saltoun Squadron Leader on Nov. 2nd.

*An Edellyn Royal Leader
Bred to Saltoun Squadron Leader*

Cow

Lot 20

EDELlyn BEAUTY 24TH 2322799 (RE 1028)

Red, calved June 19, 1945. Bred and owned by Thos. E. Wilson, Wilson, Ill.

Coldoch Sensation (275892)
Red, W. M. Snadden

{ Bapton Crocus Leader (261766)
Red, Bapton Shorthorn Co.
{ Aldie Rosemary (160049)
Red, Finlay MacGillivray

SIRE
Edellyn Royal Leader 2057560
Red, W. McNair Snadden

Coldoch Bonny Rothes 2031989
Roan, W. McNair Snadden

{ Balthayock Grand National (283376)
Dark roan, R. Wylie Hill
{ Coldoch Rothes Fairy (162726)
Red, W. McNair Snadden

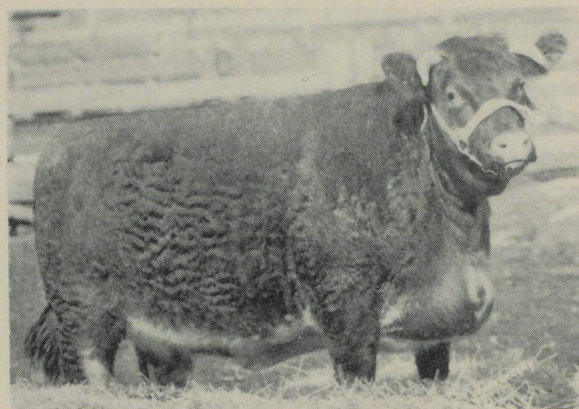
Shore Acres Command 1945446
Roan, C. A. Linzee Gordon

{ Calrossie Command (275428)
Dark roan, John MacGillivray
{ Cluny Augusta 49th 1923541
Red, Chas. A. Linzee Gordon

DAM
Village Beauty A 4th 2115187
Roan, Arnold Bros.

Village Beauty A 1802315
Red, Thos. E. Wilson

{ Glenburn Field Marshal 1709714
Red, F. H. Deacon
{ Village Beauty 8th 1606908
Red, Hopley Stock Farm



Edellyn Rosemary 22nd

. . .
EDELLYN ROSEMARY 22nd—Sired by the son of Calrossie Mercury that is out of the same dam as Edellyn Royal Leader. and out of a very well bred Shepherd Rosemary, sired by the good breeding bull Phingask Bank Roll and the granddam by the Kansas City Royal grand champion Balmucky Landlord. Millgate Farm bought a good heifer in our 1944 sale from this same dam. She is bred to Edellyn Royal Leader and this combination should really do well. Bred April 18th.

*A Diamond Mercury
Bred to Edellyn Royal Leader*

Lot 21

Cow

EDELLYN ROSEMARY 22D 2354636 (RE 1088)

Dark roan, calved Nov. 26, 1945. Bred and owned by Thos. E. Wilson, Wilson, Ill.

Calrossie Mercury 1957318
White, John MacGillivray

{ Calrossie Control (255913)
White, John MacGillivray
Calrossie Augusta Opal (179796)
Dark roan, John MacGillivray

SIRE
Edellyn Diamond Mercury 2190521
Roan, Thos. E. Wilson

Coldoch Bonny Rothes 2031989
Roan, W. McNair Snadden

{ Balthayock Grand National (283376)
Dark roan, R. Wylie Hill
Coldoch Rothes Fairy (162726)
Red, W. McNair Snadden

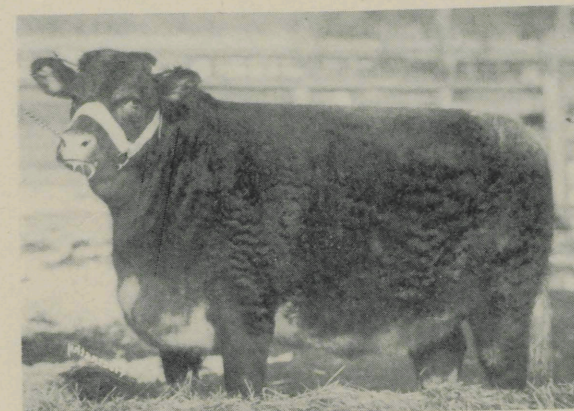
Phingask Bank Roll 1844925
Red, George Dawson

{ Phingask Roll Call (259306)
Red, G. Dawson
Phingask Broadhooks Beauty (127474)
Red, George Dawson

DAM
Anoka Rosemary 1908415
Red, F. W. Harding

Rosemary 117th 1781104
Roan, Milky Way Farms

{ Balmucky Landlord 1719126
Red, A. P. Gordon
Rosemary 116th 1455018
Roan, W. H. Miner



Edellyn Augusta 27th

. . .
EDELLYN AUGUSTA 27th—By a wonderful sire and out of one of our good producing families. Whitaker, Curtiss Candy and Millgate have purchased outstanding heifers out of the dam of this heifer and the Illinois Central bought a good Mercury bull out of her. Sni-A-Bar Augusta 28th is the right kind and she is sired by a son of the famous Calrossie Scout Leader by Collynie Royal Leader. Add to this, she is bred to Edellyn Royal Leader.

*A Mercury Out of a Grand-Daughter
of Calrossie Scout Leader*

Cow

Lot 22

EDELLYN AUGUSTA 27TH 2322798 (RE 1050)

Roan, calved Oct. 18, 1945. Bred and owned by Thos. E. Wilson, Wilson, Ill.

Calrossie Mercury 1957318
White, John MacGillivray

{ Calrossie Control (255913)
White, John MacGillivray
Calrossie Augusta Opal (179796)
Dark roan, John MacGillivray

SIRE
Edellyn Diamond Mercury 2190521
Roan, Thos. E. Wilson

Coldoch Bonny Rothes 2031989
Roan, W. McNair Snadden

{ Balthayock Grand National (283376)
Dark roan, R. Wylie Hill
Coldoch Rothes Fairy (162726)
Red, W. McNair Snadden

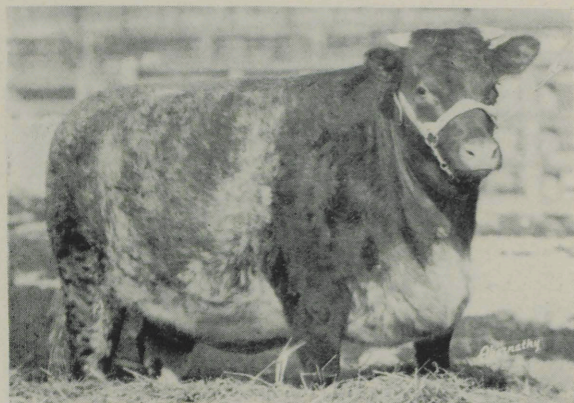
Cluny Clarendon 1848503
Red, Chas. A. Linzee Gordon

{ Calrossie Scout Leader (249388)
Dark roan, John MacGillivray
Cluny Clara 7th (94991)
Dark roan, Lady Cathcart

DAM
Sni-A-Bar Augusta 28th 1944443
Red, Sni-A-Bar Farms

Kalarama Augusta 15th 1580508
Red, Kalarama Farm

{ Kalarama Augustus 1466739
Red, Kalarama Farm
Kalarama Augusta 4th 1339102
Roan, Kalarama Farm



Curtiss Candy E. Bessie

• • •
CURTISS CANDY E. BESSIE—Sired by Edellyn Peerless Mercury, the full brother to Edellyn Campeon Mercury, the great Sni-A-Bar herd sire. She is out of a good red cow, of the popular Bessie family, sired by a son of Cruggleton Commander. She is well along in calf to a very excellent breeding son of Edellyn Royal Leader and who is out of a granddaughter of Calrossie Command and the next dam is the famous Scotston Bonny Broadhooks (Imp.) in the Arnold Bros. herd. Bred Oct. 11th.

*A Peerless Mercury
Bred to Curtiss Candy Leader*

Lot 23

Cow

CURTISS CANDY E. BESSIE 2302778 (RE 43)

Roan, calved April 13, 1945. Bred by Curtiss Candy Co., Chicago. Owned by Thos. E. Wilson, Wilson, Ill.

Calrossie Mercury 1957318
White, J. MacGillivray

(Calrossie Control (255913)
White, J. MacGillivray
Calrossie Augusta Opal (179796)
Dark roan, J. MacGillivray

SIRE
Edellyn Peerless Mercury 2129645
White, Thos. E. Wilson

Collynie Princess 51st (Imp.) 1773024
Roan, Duthie Webster

(Bapton Boxing Day 1772969
Red, C. H. E. Chubb
Collynie Princess 45th 1773023
Roan, Duthie Webster

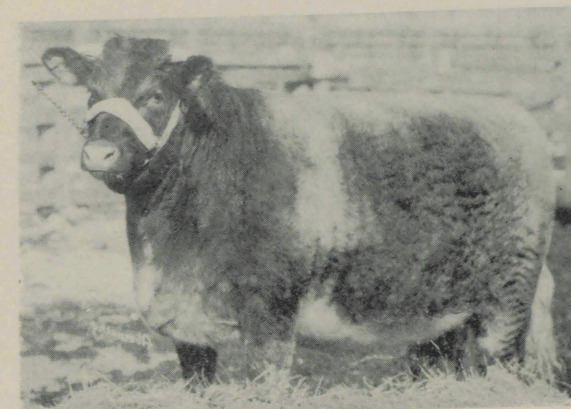
Susanna's Cruggleton 1931887
Roan, A. J. Marshall

(Cruggleton Commander (276172)
Red, A. J. Marshall
Augusta Noona 1921250
Red, A. J. Marshall

DAM
Susanna's Bessie E 3rd 2070365
Red, S. J. O. Bryan

Bessie E 4th 1813014
Roan, Carl Brechtel & Son

(Browndale Crest 1680863
Red, Carl Brechtel & Sons
Bessie E 1675578
Roan, Carl Brechtel & Sons



Edellyn Orange Blossom 64th

• • •
EDELLYN ORANGE BLOSSOM 64th is a full sister to Edellyn Mascot Mercury that heads the herd of T. C. Potts in Mississippi and is out of the same dam as Edellyn Orange Blossom 57th, the outstanding heifer Mr. Potts bought in our 1945 sale. Edellyn Orange Blossom 34th, the dam, was a winning senior heifer calf in our 1940 show herd. This Orange Blossom family has been prolific and profitable for us. The grand dam is sired by a half brother to Collynie Royal Leader. Bred Mar. 14th.

*A Calrossie Mercury
Bred to Edellyn Royal Leader*

Lot 24

Cow

EDELLYN ORANGE BLOSSOM 64TH 2354634 (RE 1087)

Roan, calved Dec. 12, 1945. Bred and owned by Thos. E. Wilson, Wilson, Ill.

Calrossie Control (255913)
White, J. MacGillivray

(Collynie's Royal Leader 1492017
Roan, Duthie Webster
Calrossie Princess Mona (88108)
Dark roan, J. MacGillivray

SIRE
Calrossie Mercury 1957318
White, J. MacGillivray

Calrossie Augusta Opal (179796)
Dark roan, J. MacGillivray

(Calrossie Nonpareil Chief (262369)
Dark roan, J. MacGillivray
Calrossie Augusta Polly (140698)
Red, J. MacGillivray

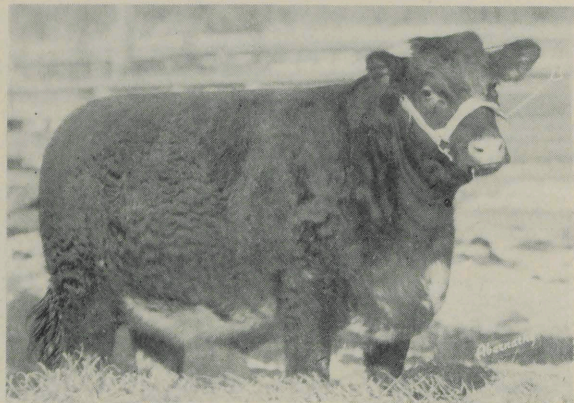
Matchless Leader 1875218
Roan, Thos. E. Wilson

(Raveni Leader 1680652
Roan, T. Dorsey Jones
Proud Violet 1773062
Roan, James Durno

DAM
Edellyn Orange Blossom 34th 1998430
Red, Thos. E. Wilson

Golden Blossom 1377673
Red, C. H. Prescott & Sons

(Collynie Golden Ring 1266688
Roan, W. Duthie
Cherry Blossom 5th 1229721
Roan, C. H. Prescott & Sons



Roanridge Cherry Bud 2nd

ROANRIDGE CHERRY BUD 2nd—Sired by Edellyn Campeon Mercury, the undefeated champion, and Calrossie Mercury's greatest son. This heifer is developing into an outstanding individual. She is out of a family that has produced well in the Sni-A-Bar and Bluemont herds. Village Gipsy 2nd is the dam of Sni-A-Bar Village Count used so successfully in the W. C. Anderson herd in Iowa. Cherry Bud, the dam of this heifer, is a very typy cow and a consistent producer of good ones. Bred to Edellyn Royal Leader 23rd.

*A Campeon Mercury
Bred to Edellyn Royal Leader 23rd*

Lot 25

ROANRIDGE CHERRY BUD 2D 2315192 (RE 599)

Roan, calved Aug. 30, 1945. Bred by W. A. Cochel, Kansas City, Mo.
Owned by Thos. E. Wilson, Wilson, Ill.

Cow

Calrossie Mercury 1957318
White, J. MacGillivray

(Calrossie Control (255913)
White, J. MacGillivray
Calrossie Augusta Opal (179796)
Dark roan, J. MacGillivray

SIRE
Edellyn Campeon Mercury 2071109
White, Thos. E. Wilson

Collynie Princess 51st 1773024
Roan, Duthie Webster

(Bapton Boxing Day 1772969
Red, C. H. E. Chubb
Collynie Princess 45th 1773023
Roan, Duthie Webster

Sni-A-Bar Claymore 1657259
Red, Sni-A-Bar Farms

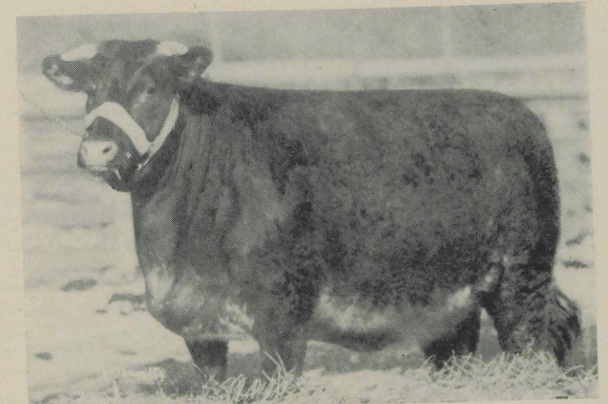
(Saltoun Claymore 1529924
Roan, A. M. T. Fletcher
Village Gipsy 2d 1487130
Red, S. P. Emmons & Son

DAM
Cherry Bud 1983528
Roan, Bluemont Farm

Cherry Blossom 15th 1864913
Roan, Bluemont Farm

(Marshal's Emblem 1490086
Roan, A. O. Stanley
Cherry Blossom 14th 1767546
R. & W. Bluemont Farms

EDELLYN ROSEWOOD 47th—Sired by a full brother to Edellyn Diamond Mercury—a son of Calrossie Mercury out of the same dam as Edellyn Royal Leader. This good heifer is out of the same dam as Edellyn Modest Mercury, the top selling bull of our 1941 sale and the sire of lot 29 in this catalog. She is also the grand dam of Edellyn Rosewood 44th, the outstanding female that P. F. Law of Canada bought in our 1945 sale. Edellyn Rosewood 17th was good enough to be the summer heifer in our show herd in 1934. She is sired by an International junior champion bull and her dam and grand dam were both shown as calves. This is her tenth calf. Bred to Edellyn Royal Leader 23rd.



Edellyn Rosewood 47th

*A Bonny Mercury Out of
A Calrossie Lord Rothes Dam*

Cow

EDELLYN ROSEWOOD 47TH (RE 1049)

Roan, calved Sept. 4, 1945. Bred and owned by Thos. E. Wilson, Wilson, Ill.

Lot 26

Calrossie Mercury 1957318
White, J. MacGillivray

(Calrossie Control (255913)
White, J. MacGillivray
Calrossie Augusta Opal (179796)
Dark roan, J. MacGillivray

SIRE
Edellyn Bonny Mercury 2140728
White, Thos. E. Wilson

Coldoch Bonny Rothes 2031989
Roan, W. McNair Snadden

(Balthayock Grand National (283376)
Dark roan, R. Wylie Hill
Coldoch Rothes Fairy 162726)
Red, W. McNair Snadden

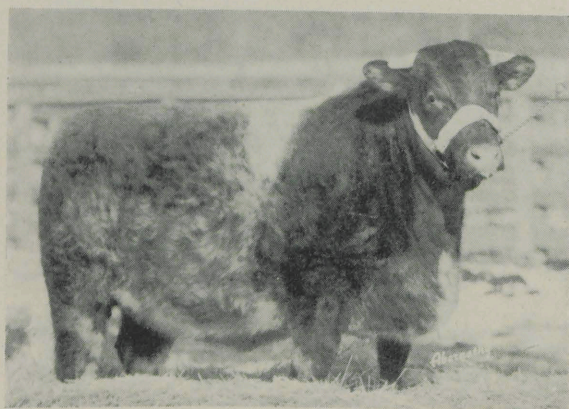
Calrossie Lord Rothes 1634147
Roan, John MacGillivray

(Royal Banker 1634157
Red, K. P. MacGillivray
Inverness Queen Rothes 3d 1634174
Roan, Wm. McAllister

DAM
Edellyn Rosewood 17th 1772341
Red, Thos. E. Wilson

Winmoor Rosewood 4th 1378327
Red, W. H. Schendorf

(Linwood Rodney 1020043
Roan, Carpenter & Ross
Ravendale Rosewood 1047308
Roan, Jno. O. Pew & Son



Ark Lea Nonpareil Lady 2nd

• • •
ARK LEA NONPAREIL LADY 2nd—Sired by a full brother to Edellyn Golden Mercury the son of Calrossie Mercury that was used so successfully in the Edellyn herd. She is out of a very excellent, very thick and low set Struve Nonpareil. Her sire was used in the Woodruff herd where all his daughters were retained in the herd. This heifer comes by all her thickness and low set conformation thru just that kind of ancestry. She was bred to Edellyn Royal Leader, on Feb. 20.

*A Banner Mercury Bred
to Edellyn Royal Leader*

Lot 27

Cow

ARK LEA NONPAREIL LADY 2D 2310045 (RE 59)

Roan, calved Nov. 18, 1945. Bred by S. O. Harris, St. Louis, Okla.
Owned by Thos. E. Wilson, Wilson, Ill.

Calrossie Mercury 1957318
White, J. MacGillivray

(Calrossie Control (255913)
White, J. MacGillivray
(Calrossie Augusta Opal (179796)
Dark roan, J. MacGillivray

SIRE
Edellyn Banner Mercury 2087411
White, Thos. E. Wilson

Lavender 70th 1713728
Roan, Hopley Stock Farm

(Browndale Goldspur 1464101
Roan, Thos. E. Wilson
(Lavender Queen 5th 1348512
Roan, Hopley Stock Farm

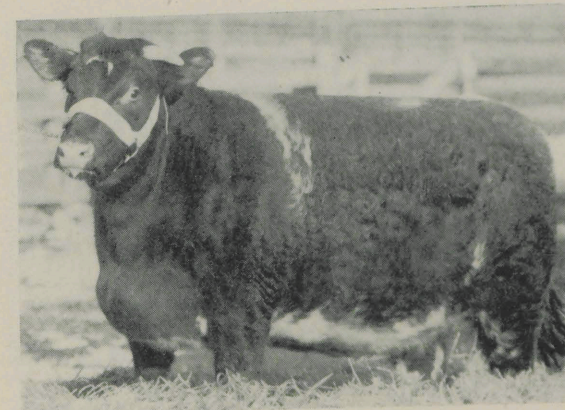
Divide Statesman 1833171
Red, The Allen Cattle Co.

(Divide Banner 2d 1643722
Roan, The Allen Cattle Co.
(Divide Verbena 1718863
Red, The Allen Cattle Co.

DAM
Nonpareil Lady 49th 2142506
Red, Geo. Struve & Sons

Nonpareil Lady 27th 1807733
Red, Geo. Struve

(Gainford Browndale 1588602
Roan, L. E. Crews
(Nonpareil Lady 19th 1621799
Roan, Geo. Struve



Edellyn Rosewood 46th

• • •
EDELLYN ROSEWOOD 46th—A very sweet daughter of the All-American Favorite out of a Rosewood family that has been very good in producing the right kind of cattle such as Edellyn Modest Mercury, top selling bull in our 1941 sale, Edellyn Rosewood 33rd, one of the tops in our 1943 sale, Edellyn Rosewood 44th top open heifer of our 1945 sale. Out of a granddaughter of Browndale Count and then comes such famous bulls as Glaryford Augustus and Revolution. She is bred Saltoun Squadron Leader.

*An Edellyn Royal Leader Bred
to Saltoun Squadron Leader*

Lot 28

Cow

EDELLYN ROSEWOOD 46TH 2322808 (RE 1064)

Roan, calved Aug. 26, 1945. Bred and owned by Thos. E. Wilson, Wilson, Ill.

Coldoch Sensation (275892)
Red, W. M. Snadden

(Bapton Crocus Leader (261766)
Red, Bapton Shorthorn Co.
(Aldie Rosemary (160049)
Red, Finlay MacGillivray

SIRE
Edellyn Royal Leader 2057560
Red, W. McNair Snadden

Coldoch Bónny Rothes 2031989
Roan, W. McNair Snadden

(Balthayock Grand National (283376)
Dark Roan, R. Wylie Hill
(Coldoch Rothes Fairy (162726)
Red, W. McNair Snadden

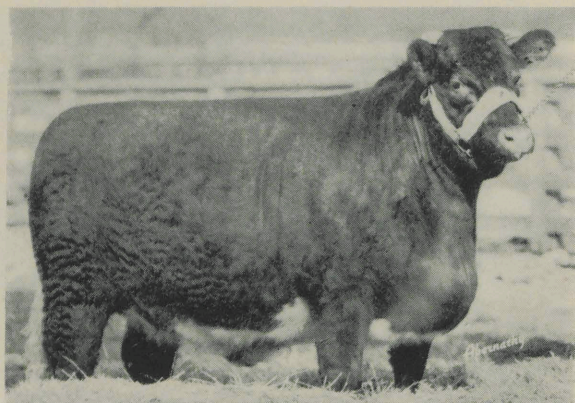
Brawith Count 1846144
Roan, David Douglas

(Brawith Boy 1836058
Roan, Hugh S. Black
(Morning Blossom 22d 1846145
Red, James Douglas & Sons

DAM
Edellyn Rosewood 26th 1950789
Roan, Thos. E. Wilson

Edellyn Rosewood 9th 1580535
Roan, Thos. E. Wilson

(Browndale Count 1156438
Roan, James Douglas
(Winmoor Rosewood 4th 1378327
Red, W. H. Schendorf



Modest Golden Drop 3rd

• • •
MODEST GOLDEN DROP 3rd—A daughter of Edellyn Modest Mercury, the top selling bull of our 1941 sale and a half sister to Curtiss Candy Modesty, one of the top heifers in our 1945 sale, selling to Ed-Ru Farms of Missouri. Out of a very good cow by Maxwalton Superb, a bull that is siring an exceptionally good typy lot of females. He is out of same dam as the sire of the dam of the Urice Bros. Royal Leader bull that was champion at the 1946 Congress. Bred to Edellyn Royal Leader 23rd on April 2.

*A Modest Mercury Bred
 to Edellyn Royal Leader 23rd*

Lot 29

Cow

MODEST GOLDDROP 3D 2318537 (LE G M 08)

Dr. roan, calved Dec. 31, 1945. Bred by Glen McComas, Allerton, Ill.
 Owned by Thos. E. Wilson, Wilson, Ill.

Calrossie Mercury 1957318
 White, J. MacGillivray

{ Calrossie Control (255913)
 White, J. MacGillivray
 { Calrossie Augusta Opal (179796)
 Dark roan, J. MacGillivray

SIRE
 Edellyn Modest Mercury 2043436
 Roan, Thos. E. Wilson

Edellyn Rosewood 17th 1772341
 Red, Thos. E. Wilson

{ Calrossie Lord Rothes 1634147
 Roan, J. MacGillivray
 { Winmoor Rosewood 4th 1378327
 Red, W. H. Schendorf

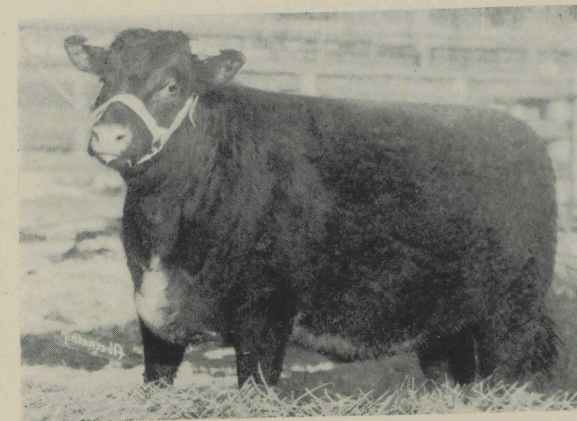
Maxwalton Superb 1916656
 Roan, Maxwalton Farms, Inc.

{ Maxwalton Pure Gold 1773685
 White, Reid Carpenter
 { Maxwalton Jealous Lady 2nd 1848035
 Red, Maxwalton Farms, Inc.

DAM
 Lakeside Lady Golddrop 23rd 2053481
 Roan, Ben W. Lake

Lakeside Lady Golddrop 11th 1954261
 Red, Ben W. Lake

{ Raveni Duke 1515812
 Red, T. Dorsey Jones
 { Lakeside Lady Golddrop 4th 1831347
 Red, Ben W. Lake



Edellyn Doris 4th

• • •
EDELLEYN DORIS 4th—A full sister to Edellyn Doris 2nd, one of the tops in our 1942 sale and selling to P. H. Rasmussen & Sons of Iowa. She is also a full sister to Edellyn Rival Mercury, sire of the good Rosewood heifer that Geo. Fisher & Son of Ohio bought in last year's sale. Roble Doris has been a very good producer of good cattle and transmits the thickness and smoothness that she showed in winning at Chicago International as a calf. She is bred to Edellyn Royal Leader on April 6th.

*A Calrossie Mercury Bred
 to Edellyn Royal Leader*

Lot 30

Cow

EDELLEYN DORIS 4TH 2337394 (RE 1074)

Roan, calved Oct. 25, 1945. Bred and owned by Thos. E. Wilson, Wilson, Ill.

Calrossie Control (255913)
 White, J. MacGillivray

{ Collynie Royal Leader 1492017
 Roan, Duthie Webster
 { Calrossie Princess Mona (88108)
 Dark roan, J. MacGillivray

SIRE
 Calrossie Mercury 1957318
 White, J. MacGillivray

Calrossie Augusta Opal (179796)
 Dark roan, J. MacGillivray

{ Calrossie Nonpareil Chief (262369)
 Dark roan, J. MacGillivray
 { Calrossie Augusta Polly (140698)
 Red, J. MacGillivray

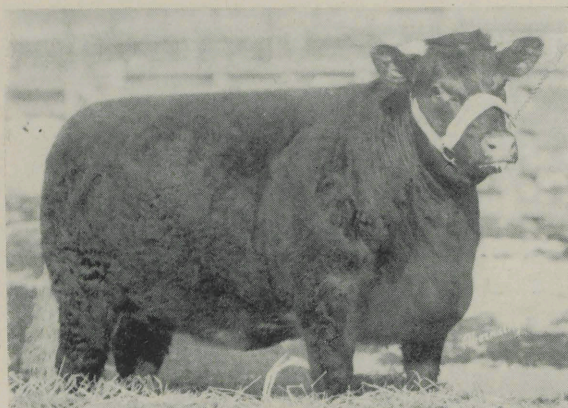
Princeton Leader 1763344
 Red, Prince of Wales

{ Master Gaffer 1762782
 Roan, Wm. C. Hunter
 { Balcairn Baroness 1763345
 Red, F. L. Wallace

DAM
 Roble Doris 1820420
 Red, C. E. Sampson

Kenwood Doris 1575641
 Red, The Prince of Wales

{ Climsland Goldsmith 1474198
 Red, The Prince of Wales
 { Lady Doris 1574744
 RLW, Earl of Minto



Crimson May 90th

• • •
CRIMSON MAY 90th is sired by a full brother to lot 4 selling in this sale. He has sired the best cattle ever produced by Blotz Bros. and this heifer is a good sample. She combines the blood of Edellyn Royal Leader, Roland Clipper Collynie Royal Barrage and Browndale Count and being mated to Saltoun Squadron Leader—all adds up to a very good heifer to own. This is Blotz Bros. leading family and a very good one. Bred Jan. 13th.

*A Edellyn Royal Leader 9th
Bred to Saltoun Squadron Leader.*

Lot 31

Cow

CRIMSON MAY 90TH 2334061 (LE A28)

Red, calved Sept. 28, 1945. Bred by Blotz Bros., Dodgeville, Wis.
Owned by Thos. E. Wilson, Wilson, Ill.

Edellyn Royal Leader 2057560
Red, W. McNair Snadden

(Coldoch Sensation (275892)
Red, W. McNair Snadden
(Coldoch Bonny Rothes 2031989
Roan, W. McNair Snadden

SIRE
Edellyn Royal Leader 9th 2197011
Roan, Thos. E. Wilson

Goldie 8th 1983560
Roan, Beath Farms

(Roland Clipper (225957)
Red, Beath Farms
(Edellyn Goldie 6th 1843534
Roan, Thos. E. Wilson

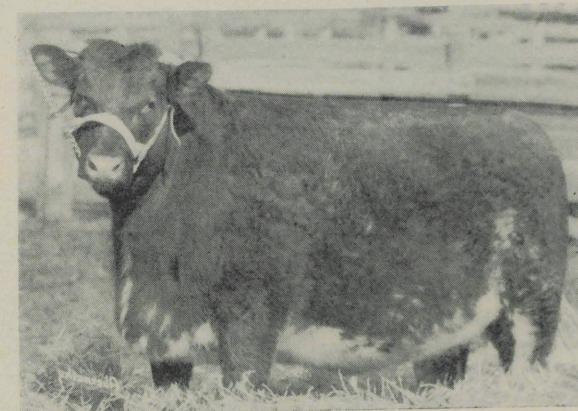
Marellbar Guard 1989505
Roan, Wm. Bartholomay, Jr.

(Edellyn Emigrant 1776373
Roan, R. S. McWilliam
(Klaymor Simplicity 3d 1944747
Roan, W. J. Russell

DAM
Crimson May 9th 2190653
Roan, Blotz Bros.

Crimson May 3d 1785176
Roan, Blotz Bros.

(Browndale Robin 1680091
Roan, Blotz Bros.
(Crimson Maid 1474466
Red, Blotz Bros.



Edellyn Flossy Shane 7th

• • •
EDELLYN FLOSSY SHANE 7th—Sired by the only bull ever to defeat Sni-A-Bar Control in the show ring (Denver 1945), and out of a heifer that is one of Edellyn Royal Leader's top senior heifer calves to date and a full sister to Edellyn Flossy Shane 6th that topped our last year's sale, selling to Broadfield Farms of Indiana. The grand dam is one of the very few cows by Collynie Royal Leader that has ever come to America. MacGillivray of Calrossie sells more high priced bulls from this family than any other. Here is incomparable quality. Bred Mar. 21st.

*A Edellyn Royal Leader Bred
to Saltoun Squadron Leader*

Cow

Lot 32

EDELLYN FLOSSY SHANE 7TH 2354632 (RE 1095)

Roan, calved Dec. 2, 1945. Bred and owned by Thos. E. Wilson, Wilson, Ill.

Edellyn Royal Leader 2057560
Red, W. McNair Snadden

(Coldoch Sensation (275892)
Red, W. M. Snadden
(Coldoch Bonny Rothes 2031989
Roan, W. McNair Snadden

SIRE
Edellyn Royal Leader 16th 2222171
Red, Thos. E. Wilson

Maxwalton Jealousy 23d 1975877
Roan, Maxwalton Farms, Inc.

(Browndale Cumberland 1883723
Roan, T. Dorsey Jones
(Maxwalton Jealousy 18th 1792449
Red, Reid Carpenter

Edellyn Royal Leader 2057560
Red, W. McNair Snadden

(Coldoch Sensation (275892)
Red, W. M. Snadden
(Coldoch Bonny Rothes 2031989
Roan, W. McNair Snadden

DAM
Edellyn Flossy Shane 4th 2197016
Red, Thos. E. Wilson

Calrossie Flossy Shane (Imp.) 1753602
Red, John MacGillivray

(Collynie Royal Leader 1492017
Roan, Duthie Webster
(Calrossie Flossy Eileen 1753601
Roan, John MacGillivray



Coldoch Bonny Rothes and Son, Edellyn Royal Leader

GOSSHALL NONPAREIL 19th—Sired by Calrossie Security, a prize winner at Perth, and a member of Calrossie's winning 3 bull show and who was sired by Muirside Ramsden King, supreme champion at the Highland, the Royal and the Northern Counties show of 1939. He and Edellyn Royal Leader have the same grand sire, Bapton Crocus Leader. Calrossie Sweet Eileen is by Calrossie Control and Calrossie Prince Landlord was a Perth first prize winner. Glastullich Sudan is by Naemoor Jasper. This is a well bred Calrossie Nonpareil and she is in calf since Sept. 30 to Edellyn Royal Leader.

Lot 33

GOSSHALL NONPAREIL 19TH (IMP.) 2271423 (258054 (CTS-A36)

Red, calved June 3, 1943. Bred by T. S. and T. P. Coleman, Canterbury, Kent, England.
Imported Feb. 15, 1945 by and owned by Thos. E. Wilson, Wilson, Ill.

SIRE

Calrossie Security (309539)
Dark roan, J. MacGillivray

Calrossie Flossy Betty (210267)
Dark roan, J. MacGillivray

Beaufort Overture (261893)
Red, Lord Lovat

DAM

Gosshall Nonpareil 11th (186096)
Red, Thos. S. Coleman

Gosshall Nonpareil (106281)
Dark roan, T. S. Coleman

(Coldoch Salute (275891)
Red, W. M. Snadden
(Muirside Miss Ramsden 2d (178755)
Roan, Jas. F. Innes

(Calrossie Prince Landlord (284438)
Red, J. MacGillivray
(Calrossie Sweet Eileen (189809)
Dark roan, J. MacGillivray

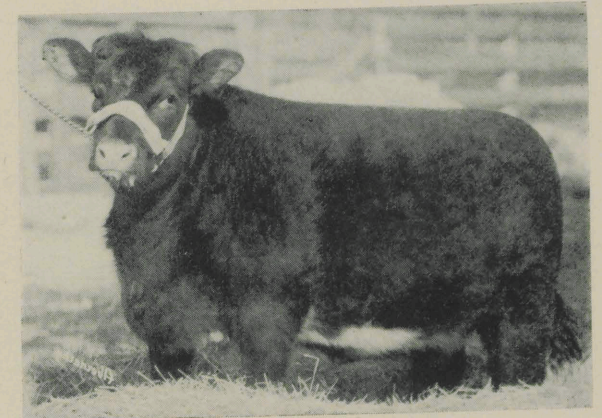
(Glastullich Sudan (244311)
Red, W. MacGillivray
(Beaufort Rothes Baroness 17th (130543)
Dark roan, Lord Lovat

(Havensham Director (208068)
Roan, H. Price Jones
(Stella Nonpareil 2d V64-1085
Red, J. MacGillivray

EDELLEYSN PATTERN . . . IS THE ALL-AMERICAN PATTERN

. . .

EDELLEYN ORANGE BLOSSOM 66th is a full sister to Edellyn Royal Leader 22nd, the top of our 1945 sale, selling to Elcona Farms of Indiana. Whenever we breed Edellyn Royal Leader to daughters of Calrossie Mercury we get something extra good, and here is a real sample. Edellyn Orange Blossom 42nd and Edellyn Orange Blossom 23rd were the top heifers of their year and this is the family of Browndale Count. Sultan Browndale was the 1935 International grand champion. If you want a summer yearling show heifer for next year here is one that will get the job done.



Edellyn Orange Blossom 66th

*A Royal Leader That can
Win Championships this Fall*

Cow

EDELLEYN ORANGE BLOSSOM 66TH 2379073 (RE 1075)

Red, calved May 18, 1946. Bred and owned by Thos. E. Wilson, Wilson, Ill.

Coldoch Sensation (275892)
Red, W. M. Snadden

SIRE

Edellyn Royal Leader 2057560
Red, W. McNair Snadden

Coldoch Bonny Rothes 2031989
Roan, W. McNair Snadden

Calrossie Mercury 1957318
White, J. MacGillivray

DAM

Edellyn Orange Blossom 42d 2071129
Roan, Thos. E. Wilson

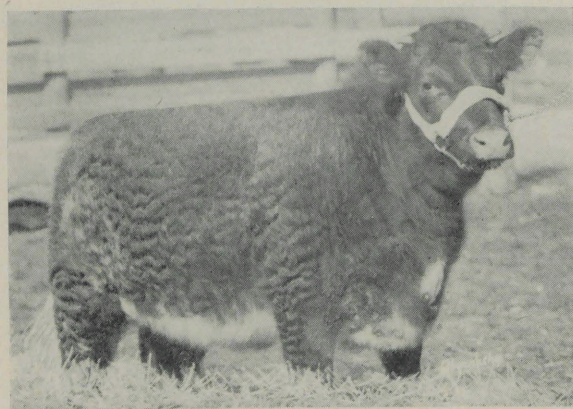
Edellyn Orange Blossom 23d 1923701
Red, Thos. E. Wilson

(Bapton Crocus Leader (261766)
Red, Bapton Shorthorn Co.
(Aldie Rosemary (160049)
Red, Finlay MacGillivray

(Balthayock Grand National (283376)
Dark roan, W. McNair Snadden
(Coldoch Rothes Fairy (162726)
Red, W. McNair Snadden

(Calrossie Control (255913)
White, J. MacGillivray
(Calrossie Augusta Opal (179796)
Dark roan, J. MacGillivray

(Sultan Browndale 1772330
Roan, Thos. E. Wilson
(Morning Blossom 22d 1846145
Red, J. Douglas & Sons



Edellyn Rosewood 49th

. . .
EDELLYN ROSEWOOD 49th—A sweet heifer by Edellyn Royal Leader 9th, the very good breeding son of the All-American Favorite in service in the Blotz herd in Wisconsin. Out of a good Rosewood dam sired by an outstanding son of Edellyn Emigrant the imported in dam bull used jointly by Edellyn and Marellbor Farms. This heifer is the right type, to not only make a real show heifer, but a brood cow that will stay typy. She is bred that way.

*A Edellyn Royal Leader 9th
Out of a Good Rosewood Family*

Lot 35

Cow

EDELLYN ROSEWOOD 49TH 2354638 (RE 1082)

Roan, calved March 29, 1946. Bred by Blotz Bros., Dodgeville, Wis.
Calved property of Thos. E. Wilson, Wilson, Ill.

Edellyn Royal Leader 2057560
Red, W. McNair Snadden

{ Coldoch Sensation (275892)
Red, W. McNair Snadden
{ Coldoch Bonny Rothes 2031989
Roan, W. McNair Snadden

SIRE
Edellyn Royal Leader 9th 2197011
Roan, Thos. E. Wilson

Goldie 8th 1983560
Roan, Beath Farms

{ Roland Clipper (225957)
Red, Beath Farms
{ Edellyn Goldie 6th 1843534
Roan, Thos. E. Wilson

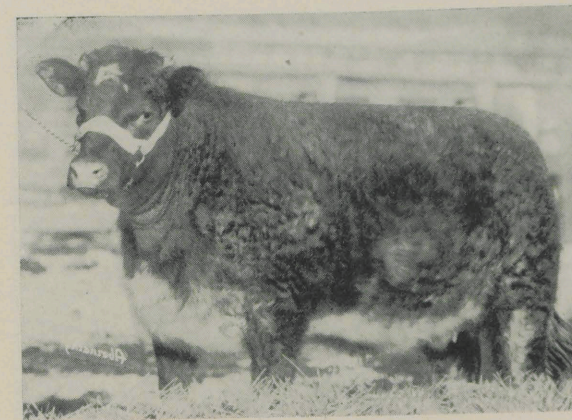
Marellbar Guard 1989505
Roan, Wm. Bartholomay, Jr.

{ Edellyn Emigrant (Imp.) 1776373
Roan, R. S. McWilliam
{ Klaymor Simplicity 3d 1944747
Roan, W. J. Russell

DAM
Rosewood Lady 65th 2241458
Red, Blotz Bros.

Rosewood Lady 61st 2074582
Red, Blotz Bros.

{ Glenburn Brigadier 1837123
Roan, F. H. Deacon
{ Rosewood Lady 6th 1924955
White, Blotz Bros.



Edellyn Rosewood 48th

. . .
EDELLYN ROSEWOOD 48th—Combines the blood lines of Calrossie Mercury, Edellyn Royal Leader, Browndale Count and Edellyn Command on a real Cluny Rosewood foundation that produced Tomahawk, the International grand champion steer of 1945. Merryvale Farms and Millgate Farms have purchased heifers out of Edellyn Rosewood 28th. This is a real family of cattle and this sweet headed typy heifer will make a great brood cow.

*A Diamond Mercury
From same Family as Edellyn Command*

Cow

Lot 36

EDELLYN ROSEWOOD 48TH 2354637 (RE 1089)

Roan, calved March 3, 1946. Bred and owned by Thos. E. Wilson, Wilson, Ill.

Calrossie Mercury 1957318
White, John MacGillivray

{ Calrossie Control (255913)
White, John MacGillivray
{ Calrossie Augusta Opal (179796)
Dark roan, John MacGillivray

SIRE
Edellyn Diamond Mercury 2190521
Roan, Thos. E. Wilson

Coldoch Bonny Rothes 2031989
Roan, W. McNair Snadden

{ Balthayock Grand National (283376)
Dark roan, R. Wylie Hill
{ Coldoch Rothes Fairy (162726)
Red, W. McNair Snadden

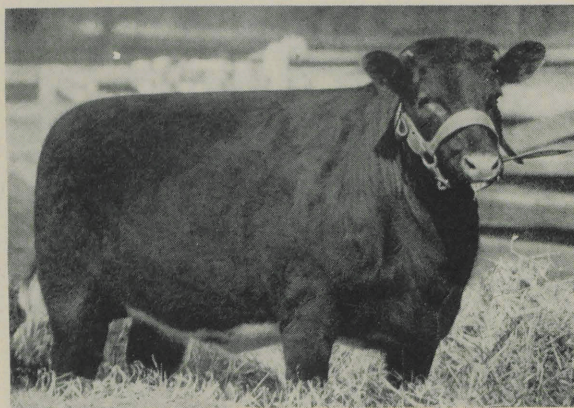
Browndale Hero 1580518
Roan, Thos. E. Wilson

{ Browndale Count 1156438
Roan, James Douglas
{ Edellyn Rosina 1310877
Roan, Thos. E. Wilson

DAM
Edellyn Rosewood 28th 1984491
Roan, Thos. E. Wilson

Cluny Rosewood 33rd (Imp.) 1917362
Red, Chas. A. Linzee Gordon

{ Cluny Sirdar Augustus (262734)
Dark roan, Lady Cathcart
{ Cluny Rosewood 26th (158083)
Dark roan, Chas. A. Linzee Gordon



Edellyn Victoria 19th

• • •

EDELLYN VICTORIA 20th is out of the same dam as Edellyn Victoria 19th, the grand little heifer that Mary Jane Whitten bought in last year's sale and which is pictured herewith. Sired by a great breeding bull and out of one of the famous Geishecker Victoria cows by Browndale Hero. This is faultless breeding with no less than six generations of Cruickshank breeding behind her. There is nothing but good cattle all the way down in this pedigree.

*A Diamond Mercury Art
of a Cruickshank Victoria*

Lot 37

Cow

EDELLYN VICTORIA 20TH 2379079 (RE 1111)

White, calved May 21, 1946. Bred and owned by Thos. E. Wilson, Wilson, Ill.

Calrossie Mercury 1957318
White, John MacGillivray

(Calrossie Control (255913)
White, John MacGillivray
Calrossie Augusta Opal (179796)
Dark roan, John MacGillivray

SIRE
Edellyn Diamond Mercury 2190521
Roan, Thos. E. Wilson

Coldoch Bonny Rothes 2031989
Roan, W. McNair Snadden

(Balthayock Grand National (283376)
Dark roan, R. Wylie Hill
Coldoch Rothes Fairy 162726
Red, W. McNair Snadden

Browndale Hero 1580518
Roan, Thos. E. Wilson

(Browndale Count 1156438
Roan, James Douglas & Sons
Edellyn Rosina 1310877
Roan, Thos. E. Wilson

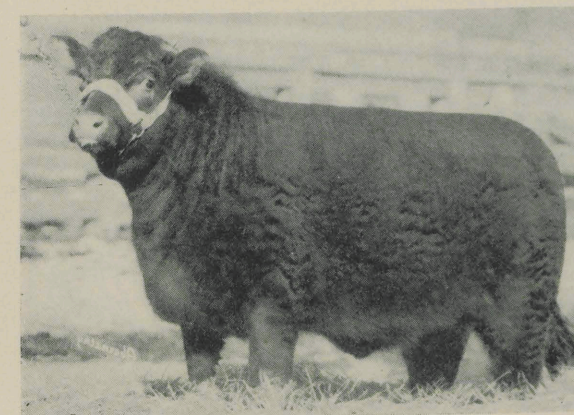
DAM
Victoria 18th 1869678
Roan, Geishecker Bros.

Victoria 15th 1441683
Roan, Bellows Bros.

(Radium Emblem 1281991
RLW, Bellows Bros.
Victoria 11th 698460
Roan, N. A. Lind.

• • •

EDELLYN BROADHOOKS 32nd—A Edellyn Royal Leader heifer out of Edellyn's famous Collynie Broadhooks family and whose dam is by Calrossie Mercury is about as great a recommendation as any female could have. Three consecutive International Shorthorn Congress grand champions came out of this very family and two of the best bulls in this sale descend from the same foundation. There is nothing finer on the market than this breeding and here is a heifer that goes with it.



Edellyn Broadhooks 32nd

*An Edellyn Royal Leader
Out of a Calrossie Mercury Dam*

Cow

Lot 38

EDELLYN BROADHOOKS 32D 2379067 (RE 1129)

Red, calved May 26, 1946. Bred and owned by Thos. E. Wilson, Wilson, Ill.

Coldoch Sensation (275892)
Red, W. M. Snadden

(Bapton Crocus Leader (261766)
Red, Bapton Shorthorn Co.
Aldie Rosemary (160049)
Red, Finlay MacGillivray

SIRE
Edellyn Royal Leader 2057560
Red, W. McNair Snadden

Coldoch Bonny Rothes 2031989
Roan, W. McNair Snadden

(Balthayock Grand National 283376
Dark roan, R. Wylie Hill
Coldoch Rothes Fairy (162726)
Red, W. McNair Snadden

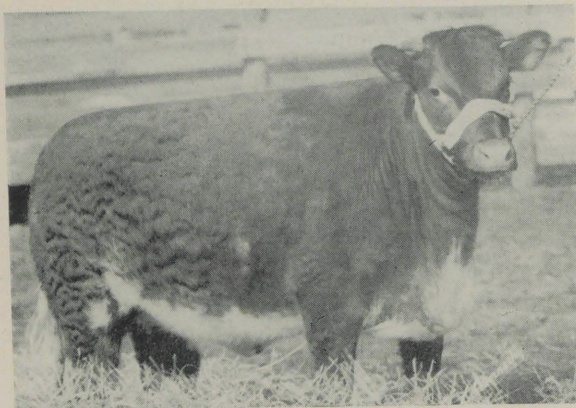
Calrossie Mercury 1957318
White, J. MacGillivray

(Calrossie Control (255913)
White, J. MacGillivray
Calrossie Augusta Opal (179796)
Dark roan, John MacGillivray

DAM
Edellyn Broadhooks 17th 2087425
Roan, Thos. E. Wilson

Edellyn Broadhooks 10th 1978832
Red, Thos. E. Wilson

(Brawith Count 1846144
Roan, David Douglas
Edellyn Broadhooks 4th 1852318
Roan, Thos. E. Wilson



Edellyn Broadhooks 33rd

• • •
EDELLYN BROADHOOKS 33rd—Here is another heifer from Edellyn's Collynie Broadhooks family sired by Edellyn Command's outstanding breeding son and out of a Calrossie Mercury dam that was one of the tops of our sale in 1944 and was the top in the Ed-Ru dispersion sale. She is one of Calrossie Mercury's outstanding daughters. All of our best breeding is wrapped up in this little lady.

*A Grand-Daughter of Command
Out of a dam by Calrossie Mercury*

Lot 39

Cow

EDELLYN BROADHOOKS 33D 2390233 (RE 1161)

Roan, calved May 10, 1946. Bred by Leslie Young, Wayland, Mo.;
Second owner Thos. E. Wilson, Wilson, Ill.

Edellyn Command 2000000
Roan, Chas. A. Linzee Gordon

(Calrossie Command (275428)
Dark roan, John MacGillivray
Cluny Rosewood 33rd 1917362
Red, Chas. A. Linzee Gordon

SIRE
Ed-Ru Command 2041305
Roan, Thos. E. Wilson

Edellyn Princess Royal 13th 1950788
Roan, Thos. E. Wilson

(Sultan Browndale 1772330
Roan, Thos. E. Wilson
Collynie Royal Princess 1773026
Roan, Duthie Webster

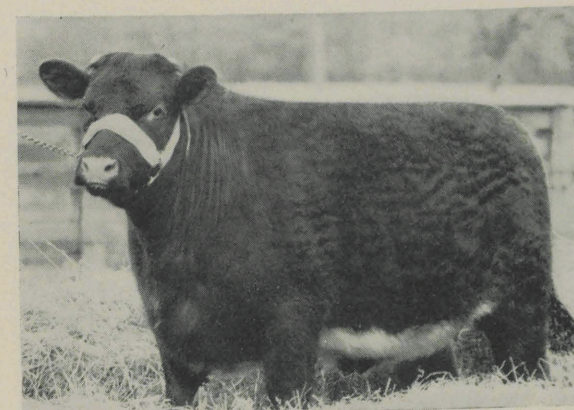
Calrossie Mercury 1957318
White, John MacGillivray

(Calrossie Control (255913)
White, John MacGillivray
Calrossie Augusta Opal (179796)
Dark roan, John MacGillivray

DAM
Edellyn Broadhooks 21st 2155993
Red, Thos. E. Wilson

Edellyn Broadhooks 10th 1978832
Red, Thos. E. Wilson

(Brawith Count 1846144
Roan, David Douglas
Edellyn Broadhooks 4th 1852318
Roan, Thos. E. Wilson



Edellyn Orange Blossom 52nd

• • •
EDELLYN ORANGE BLOSSOM 63rd—A daughter of Edellyn Diamond Mercury, the son of Calrossie Mercury, that is out of the same dam as Edellyn Royal Leader, and out of a very good Orange Blossom cow sired by Edellyn Modern Mercury, one of Calrossie Mercury's best breeding sons owned by F. S. Davidson of Ohio. This heifer is from the same family as Edellyn Orange Blossom 52nd purchased in our 1944 sale by Oklahoma A. & M. College. Orange Shade by a son Naemoor Jasper has been a great producer.

*A Diamond Mercury
From Famous Ancestry*

Cow

Lot 40

EDELLYN ORANGE BLOSSOM 63D 2354633 (RE 1081)

White, calved Dec. 16, 1945. Bred and owned by Thos. E. Wilson, Wilson, Ill.

Calrossie Mercury 1957318
White, John MacGillivray

(Calrossie Control (255913)
White, John MacGillivray
Calrossie Augusta Opal (179796)
Dark roan, John MacGillivray

SIRE
Edellyn Diamond Mercury 2190521
Roan, Thos. E. Wilson

Coldoch Bonny Rothes 2031989
Roan, W. McNair Snadden

(Balthayock Grand National (283376)
Dark roan, R. Wylie Hill
Coldoch Rothes Fairy (162726)
Red, W. McNair Snadden

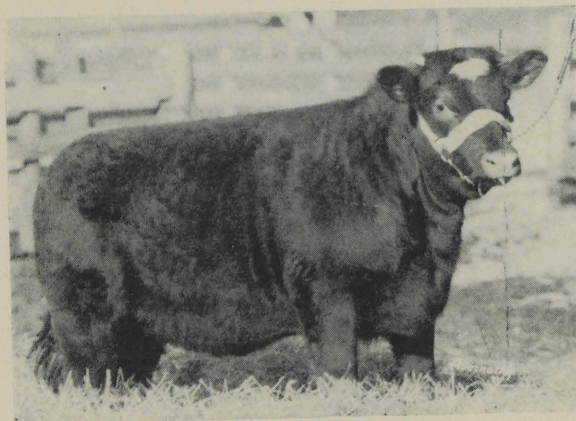
Edellyn Modern Mercury 2024078
Roan, Thos. E. Wilson

(Calrossie Mercury 1957318
White, J. MacGillivray
Glenburn Ramsden Lass 1711819
Roan, F. H. Deacon

DAM
Edellyn Orange Blossom 51st 2155999
White, Thos. E. Wilson

Orange Shade (Imp.) 1773052
Roan, James Durno

(Glastullich Watchman 1772988
Red, W. MacGillivray
Uppermill Orange Bud 1773100
Roan, J. & L. Durno



Edellyn Rosewood 50th

.

EDELLEYN ROSEWOOD 50th—Another Edellyn Diamond Mercury heifer and an extremely smooth and even made one. She is out of the same dam as Edellyn Rosewood 42nd purchased in our 1945 sale by A. W. Whitten of Texas and Edellyn Rosewood 32nd, one of Calrossie Mercury's good daughters that we have retained in the herd. This heifer would do to fit for the summer yearling class this year and she will make a great Rosewood on which to found a family.

*A Diamond Mercury
Tracing back to Rosewood 86th*

Lot 41

Cow

EDELLEYN ROSEWOOD 50TH 2379076 (RE 1109)

Red, calved June 5, 1946. Bred and owned by Thos. E. Wilson, Wilson, Ill.

Calrossie Mercury 1957318
White, John MacGillivray

{ Calrossie Control (255913)
White, John MacGillivray
Calrossie Augusta Opal (179796)
Dark roan, John MacGillivray

SIRE
Edellyn Diamond Mercury 2190521
Roan, Thos. E. Wilson

Coldoch Bonny Rothes 2031989
Roan, W. McNair Snadden

{ Balthayock Grand National (283376)
Dark roan, R. Wylie Hill
Coldoch Rothes Fairy (162726)
Red, W. McNair Snadden

Royal Regent 2d 1717475
Roan, C. F. Curtiss

{ Rookwood Regent 1399826
Roan, C. F. Curtiss
Rookwood Golden Chair 3d 1625485
Red, C. F. Curtiss

DAM
Rosewood 124th 1913833
Red, C. F. Curtiss

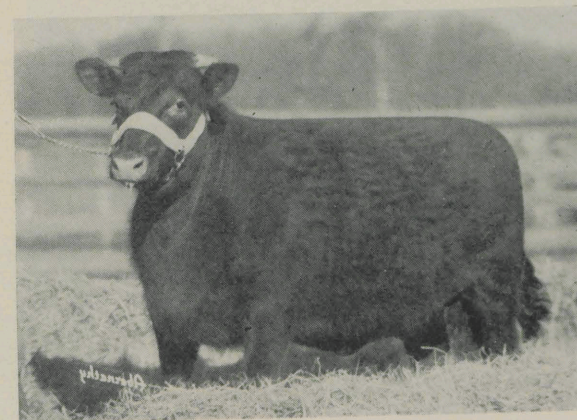
Rosewood 123d 1620936
Red, J. H. Degginger

{ Fancy Marshal 1248123
White, Tomson Bros.
Rosewood 122d 1082534
Roan, Jos. Miller & Sons

**EDELLEYS . . .
APPROVED TYPE**

1946

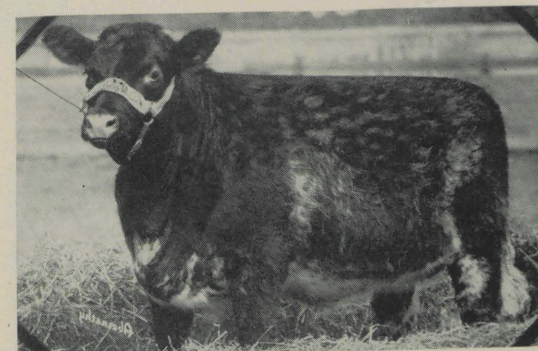
EDELLEYN FLOSSY SHANE 6th—High selling female of our 1946 sale, selling to E. Arthur Ball of Indiana.



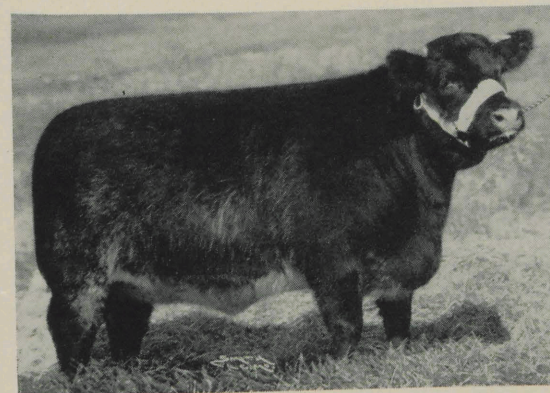
Edellyn Flossy Shane 6th

1945

EDELLEYN CLIPPER 40th—Reserve grand champion at the 1945 International Congress selling to Cherry Hill Farm of Maryland.



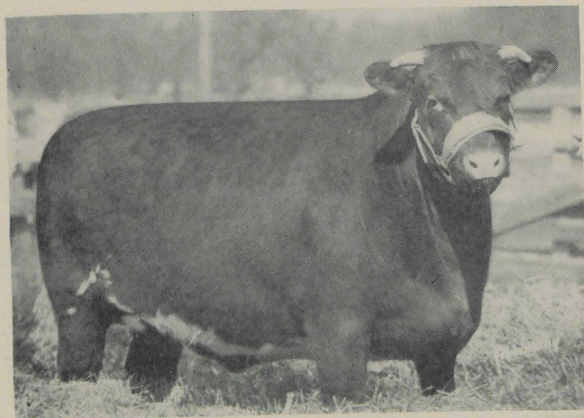
Edellyn Clipper 40th



Edellyn Violet 12th

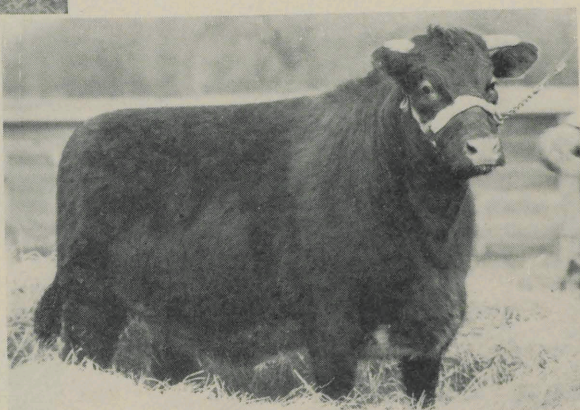
1944

EDELLEYN VIOLET 12th—Reserve grand champion at the 1944 International Congress selling to Dr. W. A. Taylor of Wisconsin.

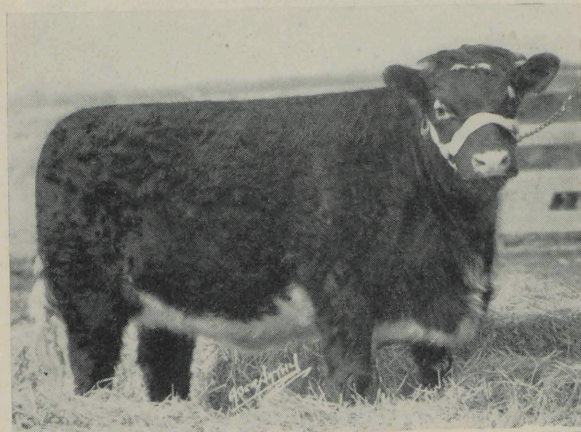


Edellyn Rosebud 6th

EDELLYN ORANGE BLOSSOM 48th—Purchased in our 1944 sale by John Regier and Sons, Whitewater, Kansas.

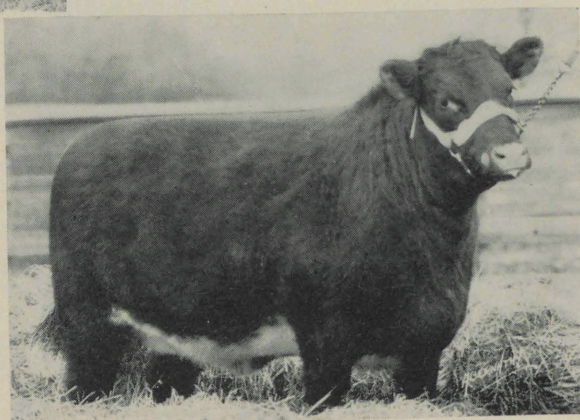


Edellyn Orange Blossom 48th



Edellyn Rosewood 34th

EDELLYN BROADHOOKS 24th—Purchased in our 1944 sale by Curtiss Candy Co. of Chicago, Ill.



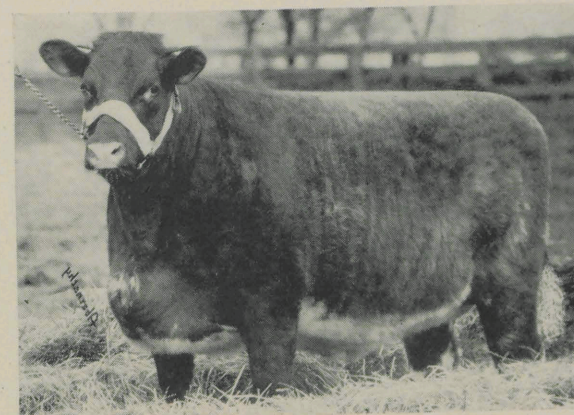
Edellyn Broadhooks 24th

A FEW EDELLYN FEMALES

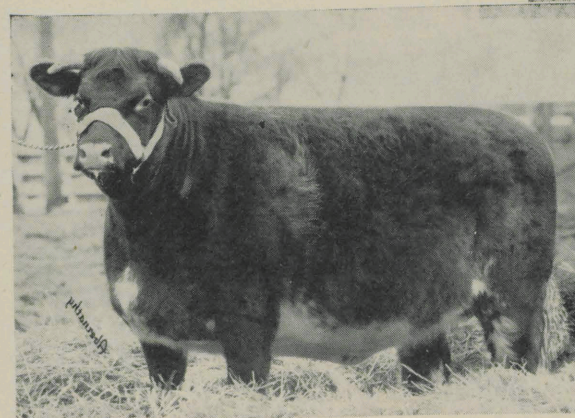
EDELLYN ROSEBUD 6th—Purchased in our 1946 sale by W. F. McCanless Circle M Ranch, Salisbury, North Carolina.

SOLD IN RECENT SALES

EDELLYN GOLDEN DROP 40th—Purchased in our 1945 sale by Marrelbar Farms, Libertyville, Ill., as the top female.



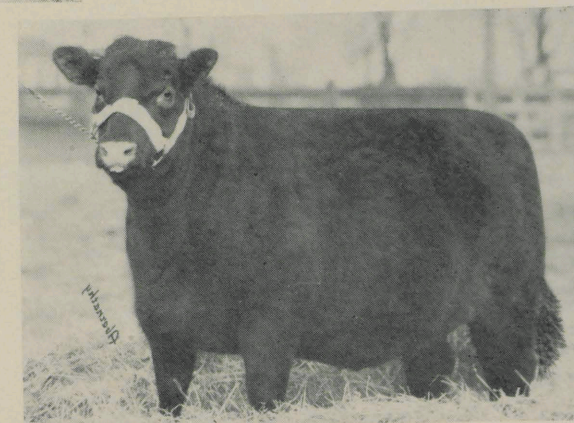
Edellyn Golden Drop 40th



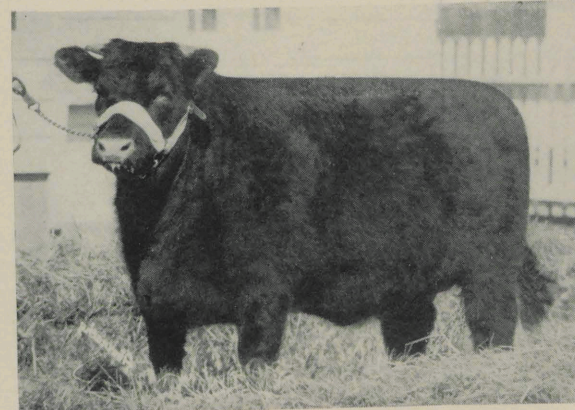
Edellyn Beauty 22nd

EDELLYN BEAUTY 22nd—Purchased in our 1945 sale by Malcolm Lomas, Lomas Farms, Villisca, Iowa.

EDELLYN ORANGE BLOSSOM 57th—Purchased in our 1945 sale by T. C. Potts, Burton Farms, Crenshaw, Miss.

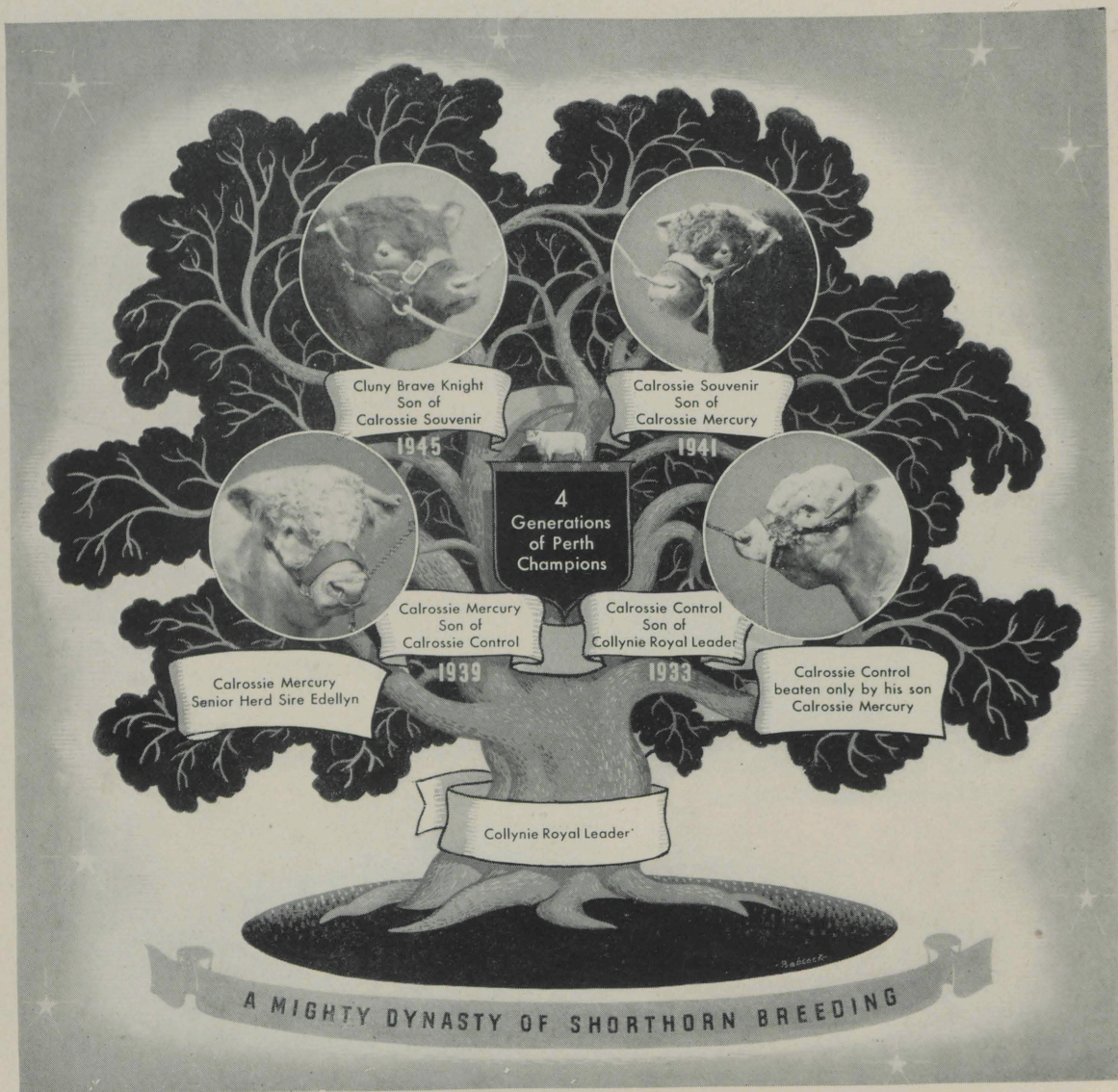


Edellyn Orange Blossom 57th



Edellyn Orange Blossom 58th

EDELLYN ORANGE BLOSSOM 58th—Purchased in our 1946 sale by E. Arthur Ball, Broadfields Farm, Ridgeville, Ind.



Will Johnson Says . . .

Another year has passed since the 1946 Edellyn Farms sale. The record of Edellyn Farms' Shorthorns for producing champions continues to grow. An Edellyn bred bull, Edellyn Campeon Mercury, sired the grand and reserve grand champions, at the most recent International stock show. For the fourth time in succession the International Congress show was topped by a bull from the Edellyn consignment. Throughout the length and breadth of North America, cattle of Edellyn breeding have been preeminent.

It seems almost incredible that any herd that has reached the top in intrinsic excellence and in public estimation could continue to improve without interruption year after year. Yet Edellyn Shorthorns have done just that and the sale offering this year is a reflection of that improvement. Never before were their eighteen as good bulls and twenty-three as admirable females sold in one sale as are those that are listed in this catalog.

Edellyn Farms remains the source of the best Shorthorns that can be purchased. The best of Edellyn productions will be sold in this sale.

Will Johnson