

The get of Edellyn Royal Leader 23rd. First prize at the 1951 American Royal Show. Exhibited by Edellyn Farms, Wilson, Illinois. First also at Illinois, Wisconsin, Iowa, Indiana and the National Shorthorn Show at Omaha.

Edellyn Farms -

27th Annual Sale of
Scotch Shorthorn Cattle

Monday, June 2, 1952

Thomas E. Wilson, Owner

*We
Invite You to
Our Annual
Shorthorn Sale*

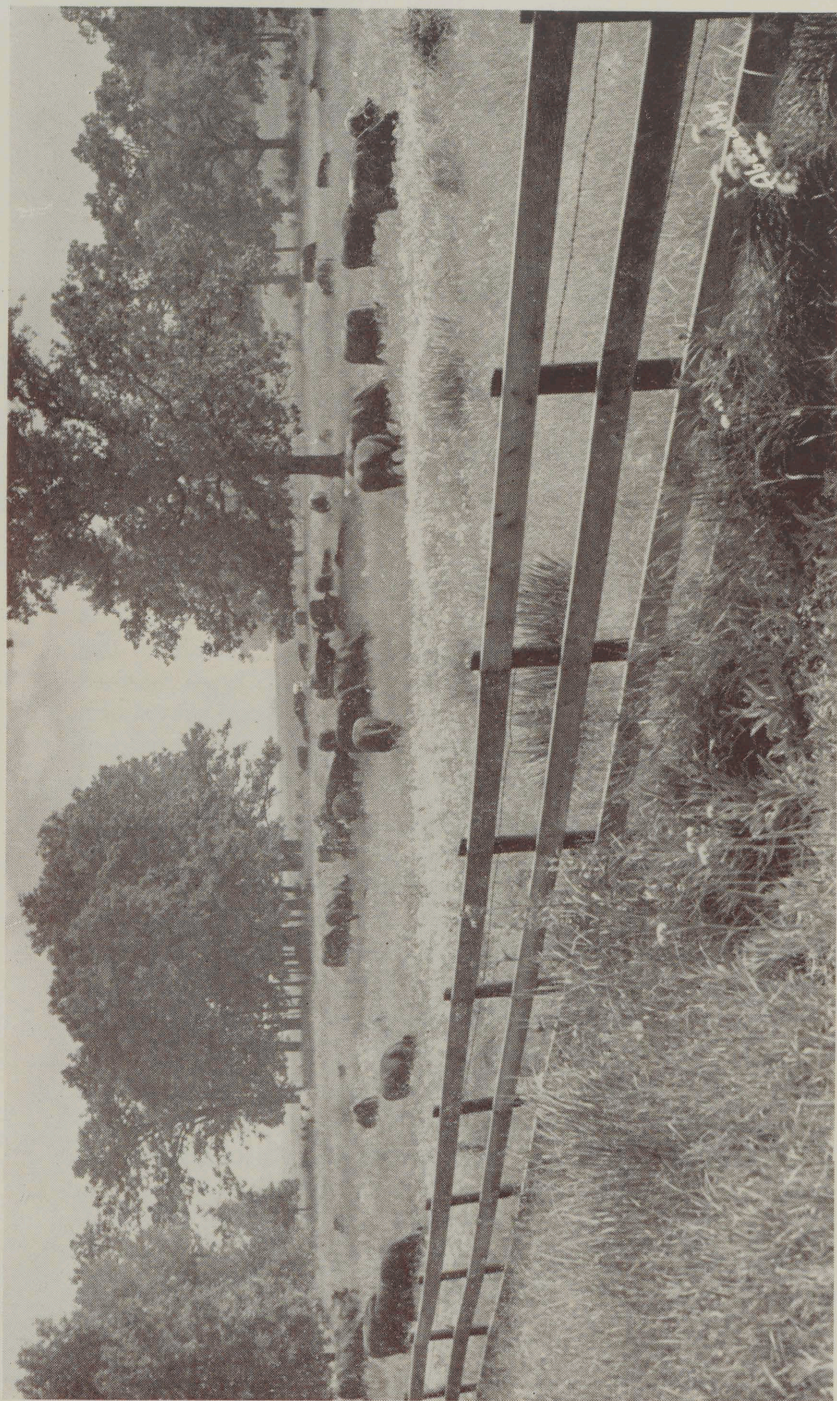


It is with great pleasure that we invite all of our friends to join us at Edellyn Farms on the occasion of our 27th Annual Auction Sale. All but two of the animals in this sale were bred at Edellyn Farms. Since we have reached that point in our breeding program when we can provide an offering made up so completely of Edellyn bred animals, we feel that this is somewhat of a milestone in Edellyn history.

Nearly one thousand Shorthorns have been sold through the annual Edellyn auctions. We have followed their careers with interest and have rejoiced in their success. It has been our observation, however, that the individuals bred at Edellyn and backed by Edellyn's carefully planned matings have worked the greatest improvement. It is such a group that have been provided for this 27th Annual Sale and we offer them with confidence.

We sincerely hope you will honor us with your presence on this important day at Edellyn Farms. Please plan to arrive on Sunday, the day prior to our sale, for a leisurely inspection of the sale cattle and the breeding herd.

Thos. E. Wilson



The Edellyn Herd is maintained under conditions that insure the proper health and development of each calf.



Here are the grand champions at the 1951 American Royal, Edellyn Royal Leader 114th and Edellyn Princess Royal 27th. Both are out of Edellyn bred females. Both are sired by Edellyn Royal Leader 23rd. The get and service of Edellyn Royal Leader 23rd and 114th will be a feature of the 1952 Edellyn offering.

*Every day . . .
Everywhere . . .
Edellyn bloodlines
are improving the
Shorthorn breed*

General Sale Data

SALE TO be held on Edellyn Farms on Monday, June 2, 1952 at 12:30 P.M., Central Standard Time. Lunch will be served at the farm.

Edellyn Farms are located in Lake Co., 2 miles west of Waukegan and North Chicago city limit, and are bounded on the north by Route 120 (Belvidere Road), on the east by U.S. 41 (Skokie Highway) and on the west by Route 42A, on which will be found the entrances. Also 3 miles north of Route 176, and 40 miles north of Chicago Loop on US. 41.

Those coming by train from Chicago, take the Milwaukee train on the Skokie Valley route of Chicago, North Shore and Milwaukee railroad at Adams & Wabash Street Station, every hour on the hour to North Chicago Junction. Time of trip 55 minutes. Conveyance will be provided to the farm.

All cattle sold under standard guarantee endorsed by American Shorthorn Breeders' Assn. Certificate of registry and transfer will be furnished with each lot sold. Herd is Federally Accredited for T.B. under certificate No. 130053. Every animal has been blood tested for Bangs within 30 days of the sale. We have practiced calfhoo vaccination for 20 years.

Those unable to be present may send buying orders to Hal Longley, Mervin Aegerter or Don Longley of the Shorthorn World, Allan C. Atlason of the American Shorthorn Breeders Assn., Clint Tomson of the firm of Harding & Harding, or to the auctioneers or fieldmen. Late bids by phone or Western Union thru Waukegan in care of Allan C. Atlason.

We will not be responsible for accidents that may occur but we will do everything possible to provide for the comfort and safety of our guests.

Hotels Karcher and Waukegan in Waukegan and Congress in Chicago are headquarters. We will be happy to assist in making reservations.

Auctioneers—J. E. Halsey and C. D. Swaffar.

Farm Phone—Majestic 952Y2—Waukegan, Illinois.

Monday, June 2, 1952 Wilson, Illinois

THOS. E. WILSON Owner

FRED McWILLIAM, Mgr.

Harry Ackerman, Bud Myers, Al Martin, Don Griffith—Herdsman

HAL LONGLEY, Sale Manager, 16 S. Locust St., Aurora, Illinois.

Something to Think About . . .

Four championships are awarded at each major show along with one first prize in the get-of-sire class. These are the awards that really count . . . the awards most coveted by all breeders. In the six year period since shows were resumed following World War II, a total of 60 such prizes have been awarded at the American Royal Show and the International Live Stock Exposition. A total of 45% . . . nearly half . . . of all these top awards at the two greatest purebred livestock events in America have been won by Edellyn bred animals or by animals directly descended from Edellyn bred sires. More than that . . . five of the last nine International Congress champion bulls have been either Edellyn bred or directly descended from Edellyn bred sires.

Every day . . . everywhere . . . Edellyn bloodlines
are producing the champions and top sellers.



Get of Edellyn Royal Leader. First at 1950 American Royal. His get was undefeated in 1949 and won all but once in 1948.

Edellyn's Breeding Program . . . Proves By Performance

1951

The get of Edellyn Royal Leader 23rd. First prize 1951 American Royal Show.



1950

The get of Edellyn Royal Leader 23rd. First prize 1950 International Live Stock Show.

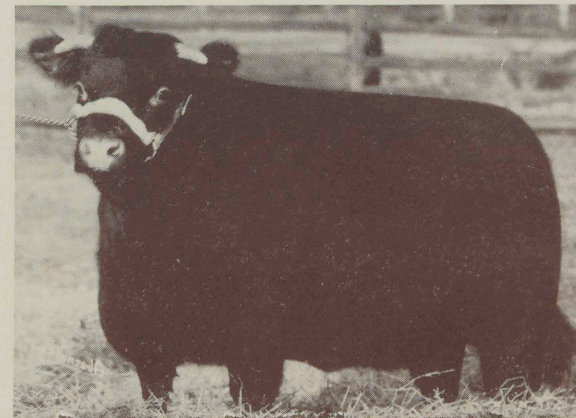


1949

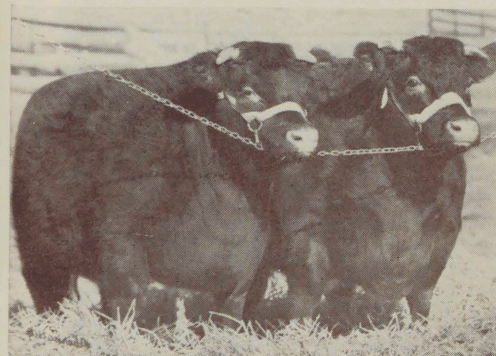
The get of Edellyn Royal Leader. First prize 1949 International Live Stock Show.

*We Have Made
Them the Finest*

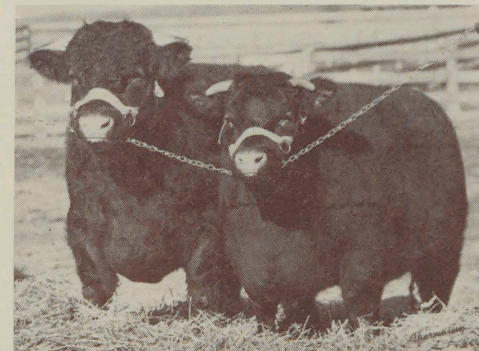
*You Have Made
Them the Favorites*



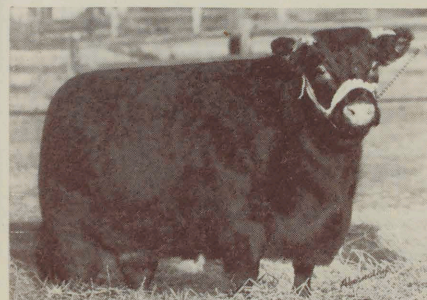
Edellyn Bonny Rothes 5th by Edellyn Royal Leader 23rd. First prize 1951 International and undefeated junior yearling heifer of the year. Has won at 14 shows in succession. Bred and exhibited by Edellyn Farms.



First prize pair of females, Illinois, Indiana, Wisconsin State Fairs, the National Show and the American Royal, 1951. Bred and exhibited by Edellyn Farms.

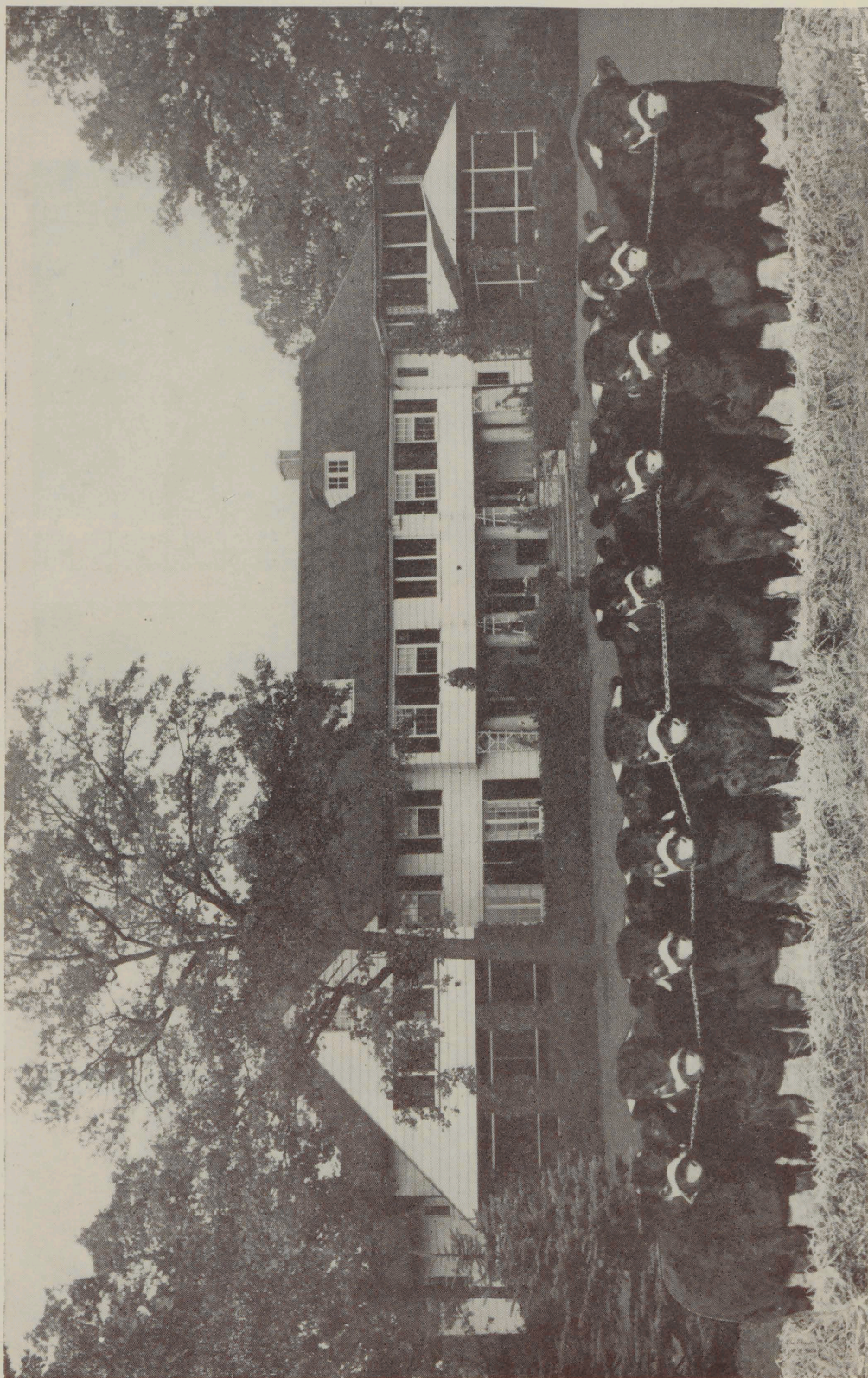


First-prize pair of yearlings at the Indiana state fair at Indianapolis and the American Royal Livestock Show at Kansas City. Bred and exhibited by Edellyn Farms, Wilson, Illinois.



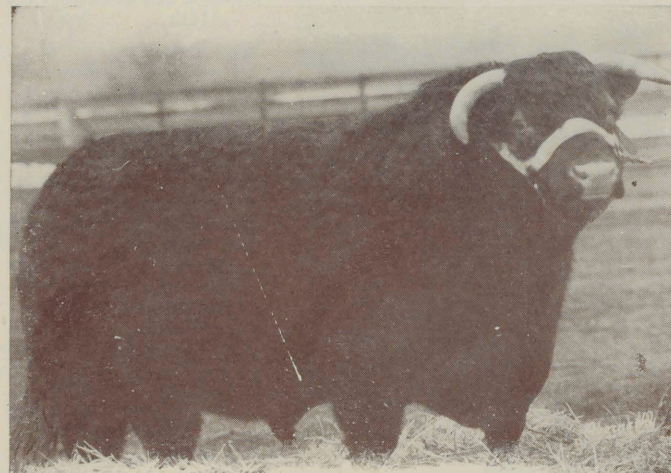
Edellyn Princess Royal 27th by Edellyn Royal Leader 23rd, grand champion female at the Wisconsin State Fair and the American Royal. First-prize two-year-old at Indiana. Bred and exhibited by Edellyn Farms.

*There's nothing
like them in
the business*



There will always be a warm welcome at Edellyn Farms for those who share our love for good Shorthorn cattle.

Foundation Sires of Edellyn's Breeding Program



Edellyn Royal Leader

The ever popular All-American Favorite has established himself as one of the greatest bulls of the breed and the line carries on with increasing vigor.

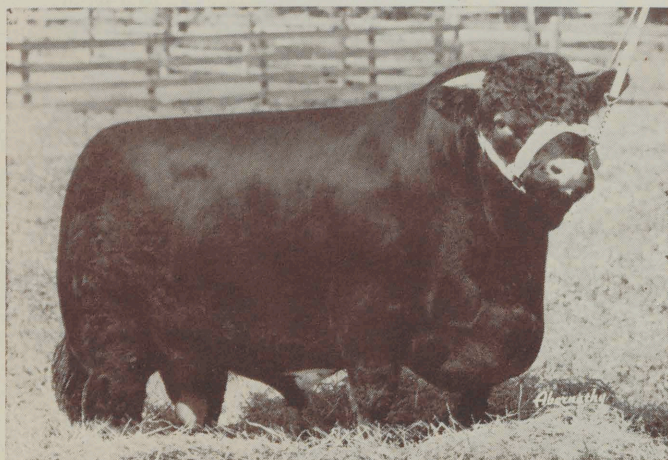
Calrossie Mercury

The Perth Supreme Champion, whose everlasting influence on the Shorthorn Breed can never be measured nor ever forgotten.



Edellyn Diamond Mercury

Sired by Calrossie Mercury and out of the same dam as Edellyn Royal Leader and highly regarded by the excellence of his get.



Edellyn Royal Leader 114th

*All of the Best Edellyn Blood
Is Wrapped Up in His Hide*

Edellyn Royal Leader 114th

Why was he retained for service at Edellyn? Because he is about the best individual ever produced at Edellyn and because he combines all of the best Edellyn blood. He won grand championships at the Wisconsin, Iowa and Indiana State Fairs as well as at the American Royal and National Shorthorn Show at Omaha in 1951. He was a member of the first prize get-of-sire group at the same shows and also at the Illinois State Fair. We consider his sire to be the best breeding son of Edellyn Royal Leader and his dam is one of the very best daughters of Calrossie Mercury. His granddam is the famous imported cow that produced Edellyn Royal Leader. His first son will be sold in this sale and many of the best females in the offering are bred to him.

Herd Bull

EDELLYN ROYAL LEADER 114TH 2543187

Red, calved Feb. 8, 1949. Bred and owned by Thos. E. Wilson, Wilson, Ill.

SIRE
Edellyn Royal Leader 2057560
Red, W. McNair Snadden

Edellyn Royal Leader 23d 2263178
Red, Thos. E. Wilson

Edellyn Jealousy 3d 2126873
Red, Thos. E. Wilson

DAM
Edellyn Golden Mercury 2024600
Red, Thos. E. Wilson

Edellyn Bonny Rothes 2263184
Dark roan, Thos. E. Wilson

Coldoch Bonny Rothes 2031989
Roan, W. McNair Snadden

(Coldoch Sensation (275892)
Red, W. M. Snadden
(Coldoch Bonny Rothes 2031989
Roan, W. McNair Snadden

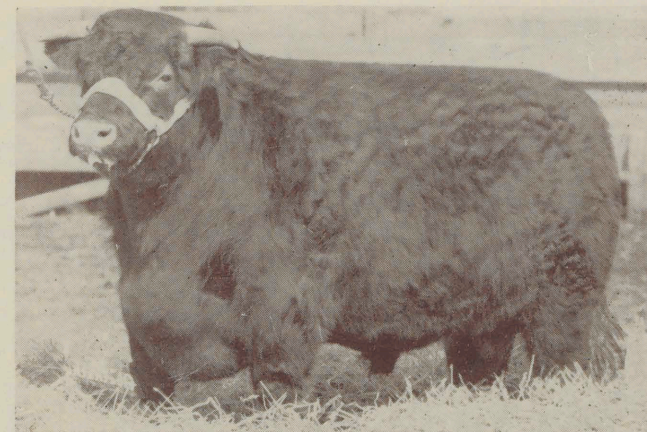
(Calrossie Mercury 1957318
White, J. MacGillivray
(Scotston Jealous Jean 1917365
Red, Wm. B. Robertson

(Calrossie Mercury 1957318
White, J. MacGillivray
(Lavender 70th 1713728
Roan, Hopley Stock Farm

(Balthayock Grand National (283376)
Red, W. M. Snadden
(Coldoch Rothes Fairy (162726)
Red, W. McNair Snadden

Edellyn Royal Leader 23rd

A favorite son of the All-American Favorite out of one of Calrossie Mercury's greatest daughters. He was undefeated as a senior yearling during the entire 1946 season. He entered the herd bull Hall of Fame when his get won the coveted Get-of-Sire award at the 1950 International. Another group of sons and daughters repeated by winning first prize Get-of-Sire at the 1951 American Royal, National Shorthorn Show at Omaha and at the Illinois, Iowa, Indiana and Wisconsin State Fairs. His son, Edellyn Royal Leader 114th, many times a grand champion in 1951, is now in service at Edellyn.



Edellyn Royal Leader 23rd

*An Edellyn Royal Leader
Sire First Prize Get of Sire 1950
International Livestock Exposition*

Herd Bull

EDELLYN ROYAL LEADER 23D 2263178

Red, calved Sept. 17, 1944. Bred and owned by Thos. E. Wilson, Wilson, Ill.

SIRE
Coldoch Sensation (275892)
Red, W. M. Snadden

Edellyn Royal Leader 2057560
Red, W. McNair Snadden

Coldoch Bonny Rothes 2031989
Roan, W. McNair Snadden

DAM
Calrossie Mercury 1957318
White, J. MacGillivray

Edellyn Jealousy 3d 2126873
Red, Thos. E. Wilson

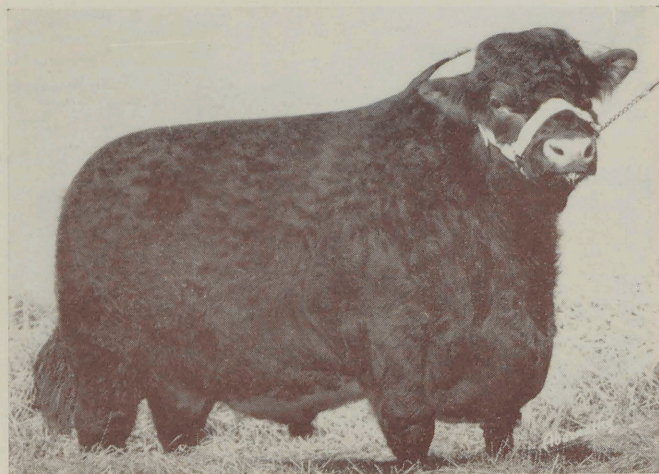
Scotston Jealous Jean (Imp.) 1917365
Red, Wm. B. Robertson

(Bapton Crocus Leader (261766)
Red, Bapton Shorthorn Co.
(Aldie Rosemary (160049)
Red, Finlay MacGillivray

(Balthayock Grand National (283376)
Dark roan, R. Wylie Hill
(Coldoch Rothes Fairy (162726)
Red, W. McNair Snadden

(Calrossie Control (255913)
White, J. MacGillivray
(Calrossie Augusta Opal (179796)
Dark roan, John MacGillivray

(Sundial (267072)
Roan, J. Durno
(Jealousy (132707)
Dark roan, J. & D. Robertson



Edellyn All-Star Mercury

Edellyn All-Star Mercury

Grand Champion at the Iowa State Fair (1948), First at Illinois, Indiana, and American Royal Stock Show, and member of winning 3 bull and 2 bull groups at the same shows. Edellyn Flossy Shane 4th was grand champion at Ft. Worth as a calf. A Mercury-Royal Leader combination that is producing cattle with scale, substance, bone, and good heads.

*A Calrossie Mercury**Dam by Edellyn Royal Leader**Gr. Dam by Collynie Royal Leader***Herd Bull****For Reference Only****EDELLYN ALL STAR MERCURY 2415057**

Red, calved Jan. 3, 1947. Bred and owned by Thos. E. Wilson, Wilson, Ill.

SIRECalrossie Control (255913)
White, J. MacGillivrayCalrossie Mercury 1957318
White, J. MacGillivrayCalrossie Augusta Opal (179796)
Dark roan, J. MacGillivray**DAM**Edellyn Royal Leader 2057560
Red, W. McNair SnaddenEdellyn Flossy Shane 4th 2197016
Red, Thos. E. WilsonCalrossie Flossy Shane 1753602
Red, John MacGillivrayCollynie Royal Leader 1492017
Roan, Duthie WebsterCalrossie Princess Mona (88108)
Dark roan, J. MacGillivrayCalrossie Nonpareil Chief (262369)
Dark roan, J. MacGillivrayCalrossie Augusta Polly (140698)
Red, J. MacGillivrayColdoch Sensation (275892)
Red, W. M. SnaddenColdoch Bonny Rothes 2031989
Roan, W. McNair SnaddenCollynie Royal Leader 1492017
Roan, Duthie WebsterCalrossie Flossy Eileen 1753601
Roan, John MacGillivray

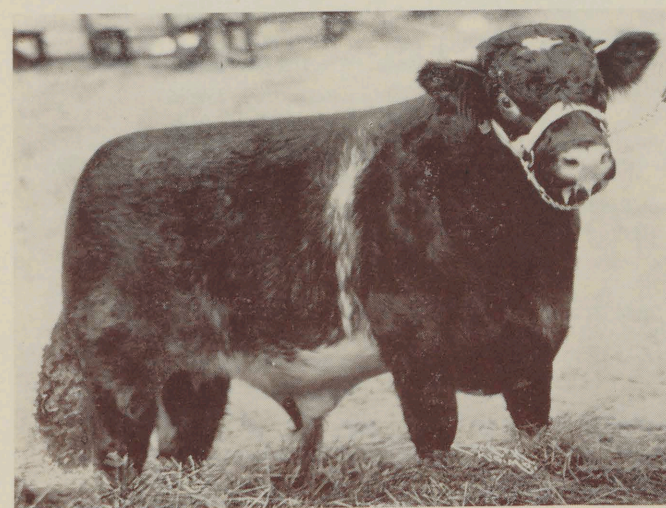
Nelson Trophy Winner as a Calf
State Fair Winner as a Yearling
Outstanding Sire

Edellyn Squadron Leader

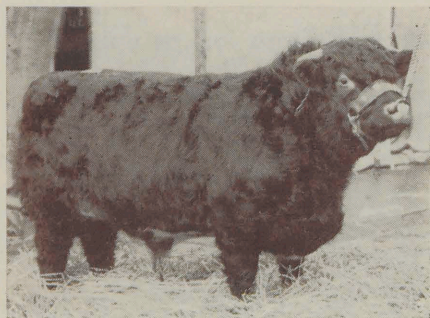
Nelson Trophy winner at the K. C. Royal, 1948, and first prize senior yearling at the 1949 Illinois, Wisconsin, and Iowa State Fair. Out of Edellyn Dorothy 21st, undefeated as a calf and Reserve Grand Champion at K. C. and Chicago, he brings to our breeding program the same blood line as today's leading sires in Scotland.



Double Grandson of Calrossie Mercury
Grand Champion Iowa State Fair
Res. Grand Champion Ill. State Fair

**Edellyn Twofold Mercury**

Grand champion at the 1947 Iowa State Fair and Reserve Grand Champion at Illinois, he brings to our breeding program a concentration of the famous Calrossie Mercury blood lines through the son of the Perth Champion that is out of the same dam as Edellyn Royal Leader. His calves are very uniform and have the real quality of the Mercurys.



Calrossie Good News

*His First Calves Are
Here-- Be Very Sure
To See Them on
Sale Day*

Herd Bull

For Reference Only

SALTOUN ROYAL CREST 2642-817 (V97E)

Red, calved March 14, 1950. Bred by A. M. Talbot Fletcher, Pencaitland, East Lothian, Scotland; Imported June 20, 1951. Owned by Thos. E. Wilson, Wilson, Ill.

SIRE

Kirkton Baronet (335904)
Dark roan, K. P. MacGillivray

Calrossie Good News (368449)
Dark roan, J. & D. P. MacGillivray

Calrossie Flossy Rose (250934)
Red, John MacGillivray

DAM

Chapelton Royalist (348437)
Dark roan, Walter Biggar & Sons

Saltoun Queen Marie (330892)
Dark roan, A. M. Talbot Fletcher

Roths Queen Marie (240522)
Roan, K. P. MacGillivray

Lawton Field Marshal (314137)
Red, Wm. Henderson
Golden Beautiful (230682)
Red, K. P. MacGillivray

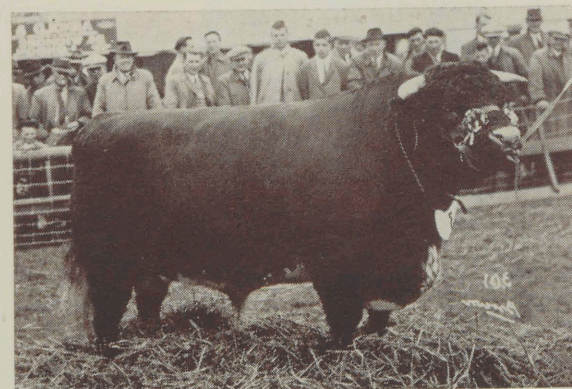
Lawton President Roosevelt (308482)
Red, William Henderson

Calrossie Flossy Rosamond (230666)
Red, John MacGillivray

Calrossie Supreme 2283903
Dark roan, J. MacGillivray
Roths Prudence (240849)
Red, A. J. Marshall

Calrossie Endeavor (297338)
Red, J. MacGillivray

Roths Queen Mary (150474)
Dark roan, K. P. MacGillivray



Glastullich Freebooter

*A Half Brother To The 1952
Perth Supreme Champion*

Herd Bull

For Reference Only

GLASTULLICH FREEBOOTER 2642-816 (V97E)

Dark roan, calved March 14, 1950. Bred by W. MacGillivray, Nigg, Rosshire, Scotland; Imported June 20, 1951. Owned by Thos. E. Wilson, Wilson, Ill.

SIRE

Calrossie Harmony (344256)
Dark roan, J. & D. P. MacGillivray

Calrossie Welcome (368471)
Dark roan, J. & D. P. MacGillivray

Augusta Laura (263052)
Red, A. J. Marshall

DAM

Harviestoun Golden Glory (303224)
Red, J. E. Kerr

Glastullich Rosewood Beres (275218)
Dark roan, Wm. J. MacGillivray

Calrossie Rosewood Beatrice (230676)
Dark roan, J. MacGillivray

Glastullich Fortress (321245)
Dark roan, Wm. J. MacGillivray
Calrossie Clipper Ray (240493)
Red, John MacGillivray

Cruggleton Perfect (303904)
Red, A. J. Marshall

Augusta Lilla (160369)
Red, A. J. Marshall

Balmuchy Winalot 2d (282901)
Red, A. P. Gordon, Estate
Harviestoun Golden Glint (189164)
Red, J. E. Kerr

Calrossie Drum Major (297335)
Red, J. MacGillivray

Calrossie Rosewood Beres (110144)
Red, J. MacGillivray

Glastullich Freebooter

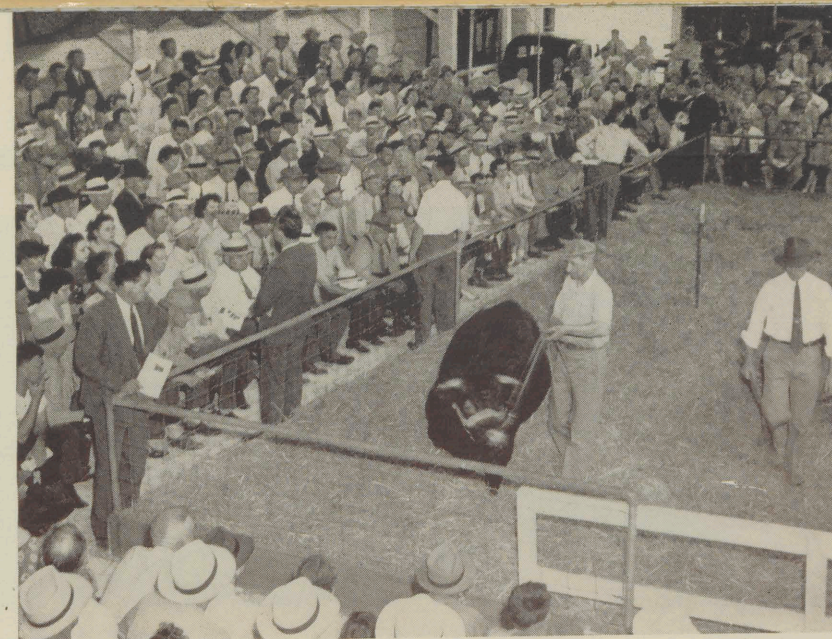
A son of the most sensational sire of the day in Scotland. Himself a winner of supreme championship at the Royal Highland and Royal English Shows, Calrossie Welcome's nine sons made the wonderful average of 4,022 guineas in the 1952 Perth sale. This group included two first prize winners, the Supreme champion that sold to Stewart Bennett at 6,100 guineas and the top bull that sold to A. R. Cross at 10,000 guineas. We are glad to have this bull at Edellyn and expect much from him. Unfortunately, he was ill for many months after arrival and has not completely recovered as yet, hence his use to date has been somewhat limited.

Fred McWilliam of Scotland, who is now the manager of Edellyn Farms, Wilson, Illinois. He succeeds Allan Atlason, now executive secretary of the American Shorthorn Breeders' Association.



Harry Ackerman, dean of America's herdsmen, poses his grandson John Phillip Shedd on the back of an Edellyn-bred show prospect.

*More
Edellyn
Breeding
Means
A Greater
Measure
of Safety...*



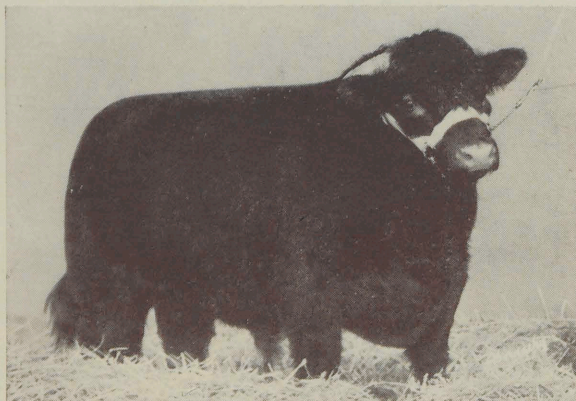
7 HIS CATALOG is so completely filled with pictures, facts and sparkling pedigrees that it seems almost useless for me to attempt a testimonial statement. Most certainly the pictures indicate more clearly than words the high quality of the cattle to be sold. The facts outlined herein are taken from the show ring and auction sale records and are not open to dispute, hence they provide very convincing proof of the improvement that has been worked in the herds of those who have made use of Edellyn bloodlines.

This is the twenty-seventh year of annual Edellyn sales. Comparing one Edellyn sale offering with another means very little because the animals in each sale have made fame and profit for their owners. Of one fact I am sure, however . . . the 1952 sale offering contains more Edellyn breeding than any previous offering and this provides a stronger guarantee than ever before that those who buy them will get top results.

I often wonder what I would do if I were establishing a herd of my own. When that time arrives, there will be an urge to buy as much Edellyn blood as my funds will allow because experience has convinced me that there is an unequalled measure of safety in Edellyn Shorthorns. Such is the thought that I am prompted to leave with those who are buying now.

HAL LONGLEY

of The Shorthorn World



Edellyn Fashion Leader

Edellyn Fashion Leader

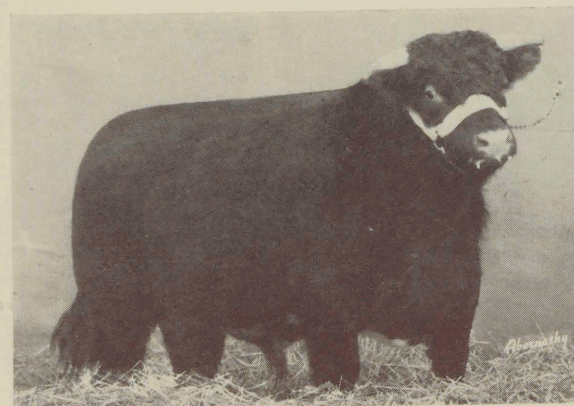
Few of his kind will be offered this year. This son of the champion Edellyn Squadron Leader won his class at the Iowa State Fair as a junior calf and we feel certain he will make a strong show as a junior yearling in 1952. His dam is a sister in blood to our famous stock bull Edellyn Royal Leader 23rd, sire of the first prize "get" at the 1950 International. Here is a stylish, grand headed, smoothly made bull with a lot of bone, substance and ruggedness.

*A 1951 Blue Ribbon Winner
That Can Repeat in 1952*

Lot 1**Bull****EDELLYN FASHION LEADER 2639-228 (RE 1477)**

Red, calved Jan. 10, 1951. Bred and owned by Thos. E. Wilson, Wilson, Ill.

SIRE	Saltoun Squadron Leader 2371578 Dark roan, A. M. T. Fletcher	{ Uppermill Sentinel (325869) Red, James Durno
	Edellyn Squadron Leader 2479459 Roan, Thos. E. Wilson	{ Rosebud Brenda (250954) Dark roan, K. P. MacGillivray
DAM	Edellyn Dorothy 21st 2322803 Red, Thos. E. Wilson	{ Edellyn Royal Leader 2057560 Red, W. McNair Snadden
	Edellyn Royal Leader 2057560 Red, W. McNair Snadden	{ Lady Dorothy 94th 2082528 Red, Merryvale Farm
DAM	Edellyn Jealousy 7th 2306933 Red, Thos. E. Wilson	{ Coldoch Sensation (275892) Red, W. M. Snadden
	Edellyn Jealousy 2d 2043441 Red, Thos. E. Wilson	{ Coldoch Bonny Rothes 2031989 Roan, W. McNair Snadden
		{ Calrossie Mercury 1957318 White, J. MacGillivray
		{ Scotston Jealous Jean 1917365 Red, William B. Robertson



Edellyn Royal Leader 142nd

Edellyn Royal Leader 142nd

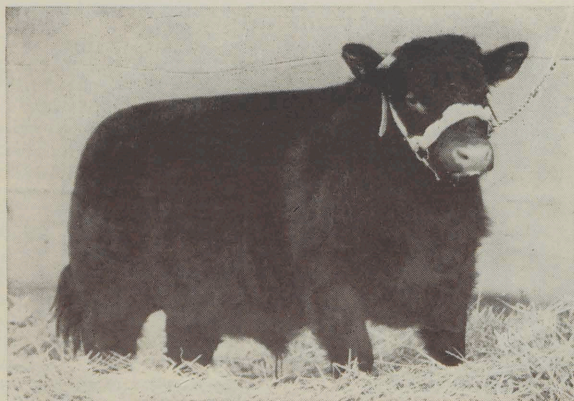
Perhaps the last son of Edellyn Royal Leader to be offered and a good one. A full sister topped our 1951 sale at \$2,500 and another heifer out of the same dam topped our 1950 female sale at \$3,500, both going to Henry Knight of Kentucky. He is out of an imported-in-dam daughter of Bantaskin Secret 13th, she the dam of such famous bulls as Edellyn Royal Leader 66th, now in service at Michigan State College, and Edellyn Royal Leader 118th, owned by Hubert Blasingame of Oklahoma. If you are seeking a bull of the right type with a good head, plenty of bone and out of a very smooth, level, good fleshed cow, here he is.

*Two of His Full Sisters Have
Topped Former Edellyn Sales*

Lot 2**Bull****EDELLYN ROYAL LEADER 142D 2611-495 (RE 1448)**

Red, calved July 27, 1950. Bred and owned by Thos. E. Wilson, Wilson, Ill.

SIRE	Coldoch Sensation (275892) Red, W. McNair Snadden	{ Bapton Crocus Leader (261766) Red, Bapton Shorthorn Co., Ltd.
	Edellyn Royal Leader 2057560 Red, W. McNair Snadden	{ Aldie Rosemary (160049) Red, Finlay MacGillivray
DAM	Coldoch Bonny Rothes 2031989 Roan, W. McNair Snadden	{ Balthayock Grand National (283376) Dark roan, R. Wylie Hill
	Kinellar Broker (332337) Dark roan, Sylvester Campbell	{ Coldoch Rothes Fairy (162726) Red, W. McNair Snadden
DAM	Edellyn Secret 5th 2380318 Roan, Alexander A. Baird	{ Calrossie High Finance (315167) Red, John MacGillivray
	Bantaskin Secret 13th 2337703 Dark roan, Alexander A. Baird	{ Kinellar Golden Drop 33d (226363) Dark roan, Sylvester Campbell
		{ Balthayock Grand National (283376) Dark roan, R. Wylie Hill
		{ Bantaskin Secret 4th (204947) Dark roan, J. Baird & Co., Ltd.



Edellyn Royal Leader 151st

**Edellyn Royal Leader
151st**

This outstanding red bull is the first calf sired by Edellyn Royal Leader 114th whose sensational record of championships is given elsewhere in this catalog. He is out of an imported-in-dam daughter of Millhills Champion and his granddam was by Kirkton Baronet. We exhibited his dam successfully. She is a beautiful type of cow, just the kind you would like for the dam of your herd bull. You will like the balance, thickness and beautiful fleshing of this calf.

*The First Calf To Be Offered
By Edellyn Royal Leader 114th*

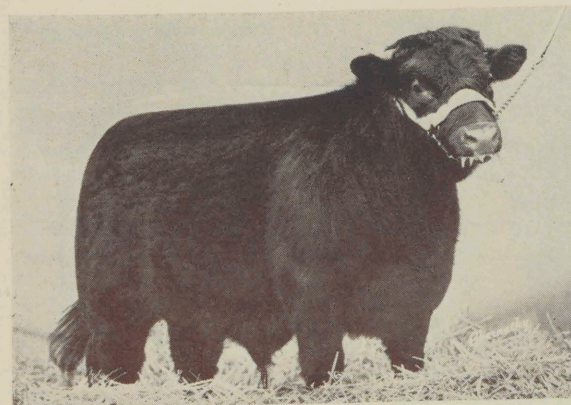
Lot 3

Bull

EDELLYN ROYAL LEADER 151ST 2653-380 (RE 1500)

Red, calved May 17, 1951. Bred and owned by Thos. E. Wilson, Wilson, Ill.

SIRE	Edellyn Royal Leader 23d 2263178 Red, Thos. E. Wilson	{	Edellyn Royal Leader 2057560 Red, W. McNair Snadden
		{	Edellyn Jealousy 3d 2126873 Red, Thos. E. Wilson
DAM	Edellyn Royal Leader 114th 2543187 Red, Thos. E. Wilson	{	Edellyn Golden Mercury 2024600 Red, Thos. E. Wilson
	Edellyn Bonny Rothes 2263184 Dark roan, Thos. E. Wilson	{	Coldoch Bonny Rothes 2031989 Roan, W. McNair Snadden
	Millhills Champion (346563) Red, Duncan M. Stewart	{	Ascreavie Democrat (328591) Red, T. O. Mills
		{	Millhills Luxury 3d (243231) Roan, Duncan M. Stewart
	Edellyn Clipper 48th 2543306 Red, John & D. P. MacGillivray	{	Kirkton Baronet (335904) Dark roan, K. P. MacGillivray
	Calrossie Clipper Pet 2518675 Red, John & D. P. MacGillivray	{	Calrossie Clipper Paddy (230659) Dark roan, John MacGillivray



Edellyn Royal Leader 152nd

**Edellyn Royal Leader
152nd**

A very good red son of Edellyn Royal Leader 23rd out of one of our best producing daughters of Calrossie Mercury. His dam produced the great sire Edellyn Royal Leader 22nd, top of our 1945 sale, and now in service in the Elcona herd at Elkhart, Indiana. Two daughters of Edellyn Orange Blossom 42nd were tops of their respective years. This bull is of the right type, displays a good head, is level and straight with a good deal of bone and substance.

*Sired by the 23rd and out of
the Great Cow that Produced
the 22nd*

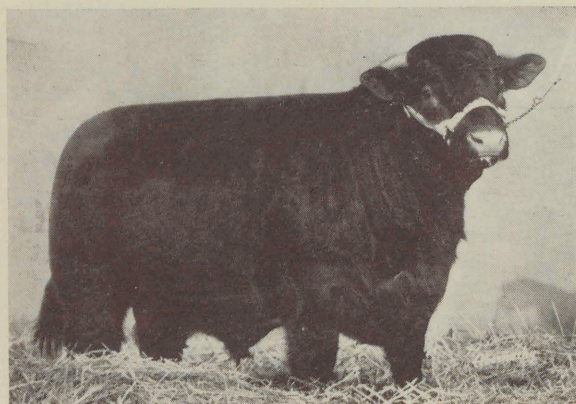
Lot 4

Bull

EDELLYN ROYAL LEADER 152D 2653-381 (RE 1524)

Red, calved June 21, 1951. Bred and owned by Thos. E. Wilson, Wilson, Ill.

SIRE	Edellyn Royal Leader 2057560 Red, W. McNair Snadden	{	Coldoch Sensation (275892) Red, W. M. Snadden
		{	Coldoch Bonny Rothes 2031989 Roan, W. McNair Snadden
DAM	Edellyn Royal Leader 23d 2263178 Red, Thos. E. Wilson	{	Calrossie Mercury 1957318 White, J. MacGillivray
	Edellyn Jealousy 3d 2126873 Red, Thos. E. Wilson	{	Scotston Jealous Jean 1917365 Red, Wm. B. Robertson
	Calrossie Mercury 1957318 White, J. MacGillivray	{	Calrossie Control (255913) White, J. MacGillivray
		{	Calrossie Augusta Opal (179796) Dark roan, J. MacGillivray
	Edellyn Orange Blossom 42d 2071129 Roan, Thos. E. Wilson	{	Sultan Browndale 1772330 Roan, Thos. E. Wilson
	Edellyn Orange Blossom 23d 1923701 Red, Thos. E. Wilson	{	Morning Blossom 22d 1846145 Red, J. Douglas & Sons



Edellyn Royal Leader 148th

**Edellyn Royal Leader
148th**

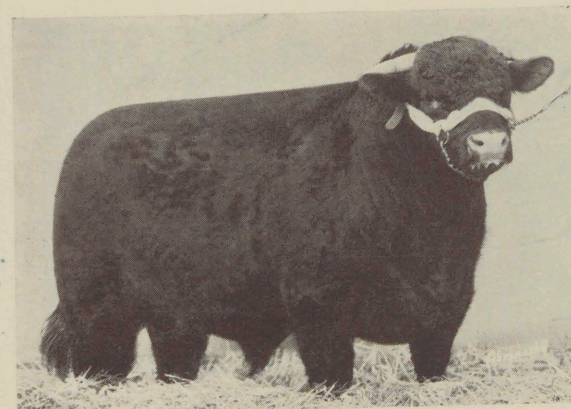
His sire, Edellyn Royal Leader 116th, now owned by W. C. Butler, Valparaiso, Indiana, was produced through the mating of a son of Edellyn Royal Leader 23rd with a daughter of Calrossie Mercury. His imported dam, a granddaughter of Crugleton Perfect, is one of the top females in our herd.

*His imported dam is one of
Edellyn's top brood cows*

Lot 5**Bull****EDELLYN ROYAL LEADER 148TH 2639-233 (RE 1480)**

Red, calved Dec. 2, 1950. Bred and owned by Thos. E. Wilson, Wilson, Ill.

SIRE	Edellyn Royal Leader 23d 2263178 Red, Thos. E. Wilson	{	Edellyn Royal Leader 2057560 Red, W. McNair Snadden
		{	Edellyn Jealousy 3d 2126873 Red, Thos. E. Wilson
DAM	Edellyn Royal Leader 116th 2550095 Red, Thos. E. Wilson	{	Calrossie Mercury 1957318 White, J. MacGillivray
	Edellyn Dorothy 20th 2247157 Red, Thos. E. Wilson	{	Lady Dorothy 94th 2082528 Red, Merryvale Farm
	Crugleton Prince Bob (328406) Red, A. J. Marshall	{	Crugleton Perfect (303904) Red, A. J. Marshall
		{	Princess Bluebell (240829) Red, Albert James Marshall
	Naemoor Cinderella Patch 2505893 Red, Robert Moubray	{	Harviestoun Golden Glow (309057) Red, J. Ernest Kerr
	Naemoor Cinderella Gipsy (251832) Red, Robert Moubray	{	Naemoor Cinderella (160893) Red, Robert Moubray



Edellyn Royal Leader 137th

**Edellyn Royal Leader
137th**

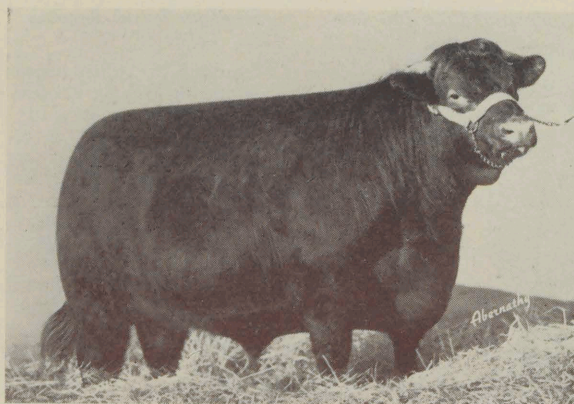
Another bull that represents the strong Leader-Mercury blood combination. He is out of an excellent daughter of Edellyn Modern Mercury and is sired by a very good breeding son of Edellyn Royal Leader. He looks like a stock bull, with real substance, character, very smooth, evenly turned and a great set of legs.

*Looks like a stock bull and
has the breeding to insure it*

Lot 6**Bull****EDELLYN ROYAL LEADER 137TH 2633-350 —321869— (RE LGI-E2)**

Red, calved March 29, 1950. Bred by Thos. E. Wilson, London, Ont., Canada.
Owned by Thos. E. Wilson, Wilson, Ill.

SIRE	Edellyn Royal Leader 2057560 Red, W. McNair Snadden	{	Coldoch Sensation (175892) Red, W. M. Snadden
		{	Coldoch Bonny Rothes 2031989 Roan, W. McNair Snadden
DAM	Edellyn Royal Leader 80th 2479454 Red, Thos. E. Wilson	{	Schivas Lord Ramsden 1772999 Roan, J. R. Burr
	Robina Rosebud 1773069 Red, James Durno	{	Lynegar Rosebud 10th 1773046 Red, John Robson Jr.
	Edellyn Modern Mercury 2024078 Roan, Thos. E. Wilson	{	Calrossie Mercury 1957318 White, J. MacGillivray
		{	Glenburn Ramsden Lass 1711819 Roan, F. H. Deacon
	Elmhurst Rosella 2d 2340284 Red, F. S. Davidson	{	Minstrel Boy —235862— Dark roan, George C. Burt
	Martha Rosella 2195933 Red, J. E. Pearen	{	Martha Rose —292192— Red, J. E. Pearen



Edellyn Classic Mercury

Edellyn Classic Mercury

Here is a blood combination that should appeal. He is by Edellyn All Star Mercury, a champion son of Calrossie Mercury. His dam is a daughter of Edellyn Royal Leader 4th that sold for \$7,000 in our 1944 sale for export to Australia. His granddam is the famous cow that produced Edellyn Royal Leader. This bull is very masculine, deep bodied and no shorter legged cow walks than his dam.

*His granddam produced
the All-American favorite*

Lot 7

Bull

EDELLYN CLASSIC MERCURY 2639-227 (RE 1497)

Red, calved Jan. 21, 1951. Bred and owned by Thos. E. Wilson, Wilson, Ill.

SIRE	Calrossie Mercury 1957318 White, J. MacGillivray	{	Calrossie Control (255913) White, J. MacGillivray
	Edellyn All-Star Mercury 2415057 Red, Thos. E. Wilson		Calrossie Augusta Opal (179796) Dark roan, J. MacGillivray
DAM	Edellyn Flossy Shane 4th 2197016 Red, Thos. E. Wilson	{	Edellyn Royal Leader 2057560 Red, W. McNair Snadden
	Edellyn Royal Leader 4th 2190528 Red, Thos. E. Wilson		Calrossie Flossy Shane 1753602 Red, John MacGillivray
	Edellyn Bonny Rothes 2d 2322801 Red, Thos. E. Wilson	{	Edellyn Royal Leader 2057560 Red, W. McNair Snadden
	Coldoch Bonny Rothes 2031989 Roan, W. McNair Snadden		Susanne 1773092 Red, James Durno
		{	Balthayock Grand National (283376) Red, W. M. Snadden
		{	Coldoch Rothes Fairy (162726) Red, W. McNair Snadden



Edellyn Royal Leader 21st, shown above, was the 1949 International Congress grand champion. He has made a great record for Hal Williams and Page Lamoreaux in California. He was out of the same dam as Lot 8 in this sale.

*From the most famous
family at Edellyn Farms*

Edellyn Halo Mercury

We failed to get a picture of this bull but please do not discount him for this reason. He is from our most famous family. His dam, a daughter of Calrossie Mercury, produced Edellyn Royal Leader 21st, the grand champion and high selling bull of the 1945 International Congress that made such a great record for Hal Williams of California. The same family produced Edellyn Royal Leader 43rd, the great sire at Millgate Farms, and Edellyn Royal Leader 11th, Byron Hawk's successful sire. If you want a double bred Mercury, thick, rugged, good headed and heavy boned, here he is. The performance of this family should instill great confidence.

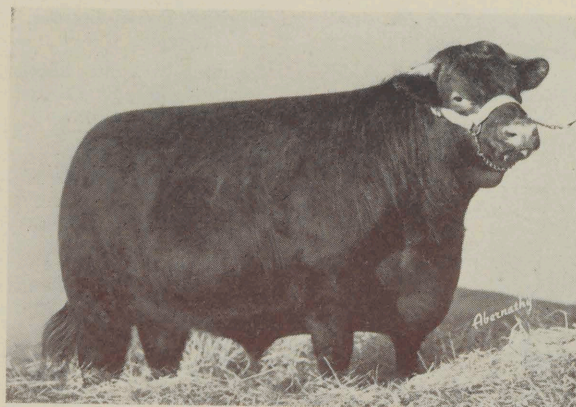
Lot 8

Bull

EDELLYN HALO MERCURY 2611-489 (RE 1451)

White, calved July 30, 1950. Bred and owned by Thos. E. Wilson, Wilson, Ill.

SIRE	Edellyn Diamond Mercury 2190521 Roan, Thos. E. Wilson	{	Calrossie Mercury 1957318 White, John MacGillivray
	Edellyn Twofold Mercury 2390225 Dark roan, Thos. E. Wilson		Coldoch Bonny Rothes 2031989 Roan, W. McNair Snadden
DAM	Edellyn Princess Royal 19th 2037433 Roan, Thos. E. Wilson	{	Calrossie Mercury 1957318 White, J. MacGillivray
	Calrossie Mercury 1957318 White, J. MacGillivray		Blood Royal 13th 1753600 Red, Duncan M. Stewart
	Edellyn Broadhooks 15th 2071118 Red, Thos. E. Wilson	{	Calrossie Control (255913) White, J. MacGillivray
	Collynie Broadhooks 12th 1773004 Red, Duthie Webster		Calrossie Augusta Opal (179796) Dark roan, J. MacGillivray
		{	Bapton Boxing Day 1772969 Red, C. H. E. Chubb
		{	Stella 11th 1489198 Roan, Mrs. Duncan Stewart



Edellyn Classic Mercury

Edellyn Classic Mercury

Here is a blood combination that should appeal. He is by Edellyn All Star Mercury, a champion son of Calrossie Mercury. His dam is a daughter of Edellyn Royal Leader 4th that sold for \$7,000 in our 1944 sale for export to Australia. His granddam is the famous cow that produced Edellyn Royal Leader. This bull is very masculine, deep bodied and no shorter legged cow walks than his dam.

*His granddam produced
the All-American favorite*

Lot 7

Bull

EDELLYN CLASSIC MERCURY 2639-227 (RE 1497)

Red, calved Jan. 21, 1951. Bred and owned by Thos. E. Wilson, Wilson, Ill.

SIRE	Calrossie Mercury 1957318 White, J. MacGillivray	Calrossie Control (255913) White, J. MacGillivray
	Edellyn All-Star Mercury 2415057 Red, Thos. E. Wilson	Calrossie Augusta Opal (179796) Dark roan, J. MacGillivray
DAM	Edellyn Flossy Shane 4th 2197016 Red, Thos. E. Wilson	Edellyn Royal Leader 2057560 Red, W. McNair Snadden
	Edellyn Royal Leader 4th 2190528 Red, Thos. E. Wilson	Calrossie Flossy Shane 1753602 Red, John MacGillivray
DAM	Edellyn Bonny Rothes 2d 2322801 Red, Thos. E. Wilson	Susanne 1773092 Red, James Durno
	Coldoch Bonny Rothes 2031989 Roan, W. McNair Snadden	Balthayock Grand National (283376) Red, W. M. Snadden
		Coldoch Rothes Fairy (162726) Red, W. McNair Snadden



Edellyn Royal Leader 21st, shown above, was the 1949 International Congress grand champion. He has made a great record for Hal Williams and Page Lamoreaux in California. He was out of the same dam as Lot 8 in this sale.

*From the most famous
family at Edellyn Farms*

Edellyn Halo Mercury

We failed to get a picture of this bull but please do not discount him for this reason. He is from our most famous family. His dam, a daughter of Calrossie Mercury, produced Edellyn Royal Leader 21st, the grand champion and high selling bull of the 1945 International Congress that made such a great record for Hal Williams of California. The same family produced Edellyn Royal Leader 43rd, the great sire at Millgate Farms, and Edellyn Royal Leader 11th, Byron Hawk's successful sire. If you want a double bred Mercury, thick, rugged, good headed and heavy boned, here he is. The performance of this family should instill great confidence.

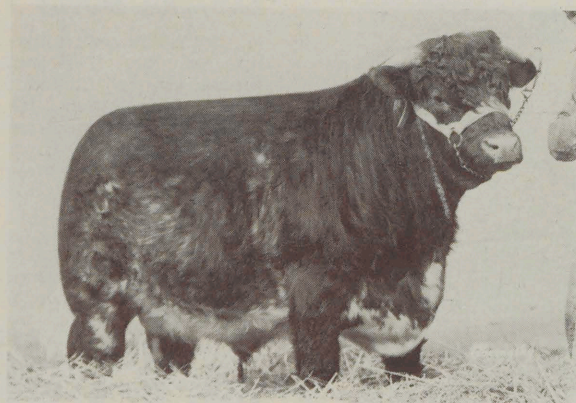
Lot 8

Bull

EDELLYN HALO MERCURY 2611-489 (RE 1451)

White, calved July 30, 1950. Bred and owned by Thos. E. Wilson, Wilson, Ill.

SIRE	Edellyn Diamond Mercury 2190521 Roan, Thos. E. Wilson	Calrossie Mercury 1957318 White, John MacGillivray
	Edellyn Twofold Mercury 2390225 Dark roan, Thos. E. Wilson	Coldoch Bonny Rothes 2031989 Roan, W. McNair Snadden
DAM	Edellyn Princess Royal 19th 2037433 Roan, Thos. E. Wilson	Calrossie Mercury 1957318 White, J. MacGillivray
	Calrossie Mercury 1957318 White, J. MacGillivray	Blood Royal 13th 1753600 Red, Duncan M. Stewart
DAM	Edellyn Broadhooks 15th 2071118 Red, Thos. E. Wilson	Calrossie Control (255913) White, J. MacGillivray
	Collynie Broadhooks 12th 1773004 Red, Duthie Webster	Calrossie Augusta Opal (179796) Dark roan, J. MacGillivray
		Baptón Boxing Day 1772969 Red, C. H. E. Chubb
		Stella 11th 1489198 Roan, Mrs. Duncan Stewart



Edellyn Prim Mercury

Edellyn Prim Mercury

A dark roan son of the Iowa State Fair grand champion, Edellyn All Star Mercury. His imported dam, a daughter of Cruggleton Brunel, is a straight Marshal bred cow. This bull is short coupled, deep bodied, good headed and displays a lot of quality.

*A Mercury out of a
Great Imported Cow*

Lot 9

Bull

EDELLYN PRIM MERCURY 2639-229 (RE 1476)

Dark roan, calved Jan. 9, 1951. Bred and owned by Thos. E. Wilson, Wilson, Ill.

SIRE	Calrossie Mercury 1957318 White, J. MacGillivray	Calrossie Control (255913) White, J. MacGillivray
	Edellyn All-Star Mercury 2415057 Red, Thos. E. Wilson	Calrossie Augusta Opal (179796) Dark roan, J. MacGillivray
DAM	Edellyn Flossy Shane 4th 2197016 Red, Thos. E. Wilson	Edellyn Royal Leader 2057560 Red, W. McNair Snadden
	Cruggleton Brunel (315414) Dark roan, A. J. Marshall	Calrossie Flossy Shane 1753602 Red, John MacGillivray
	Beauty Primrose 2549788 Red, A. J. Marshall	Cruggleton Willingdon (291229) RLW, A. J. Marshall
	Beauty Prudence (251277) Red, Albert James Marshall	Blythesome Janetta (180116) Dark roan, A. J. Marshall
		Cruggleton Realm (303920) Dark roan, A. J. Marshall
		Beauty Pride (210554) RLW, A. J. Marshall



Edellyn Senator Mercury

Edellyn Senator Mercury

A dark roan son of the Iowa State Fair grand champion Edellyn Twofold Mercury. His dam, Edellyn Dorothy 21st, is rated as the best female ever produced at Edellyn Farms. She was undefeated as a senior calf and senior yearling and won the reserve championship at the International. She is the dam of Edellyn Squadron Leader, many times a champion and a very successful sire here at Edellyn. Edellyn Senator Mercury has been rated very highly as a prospective sire not only because of his very thick, low down conformation but because of the excellence of his immediate ancestors.

*A Mercury out of the Best Female
Ever Produced at Edellyn*

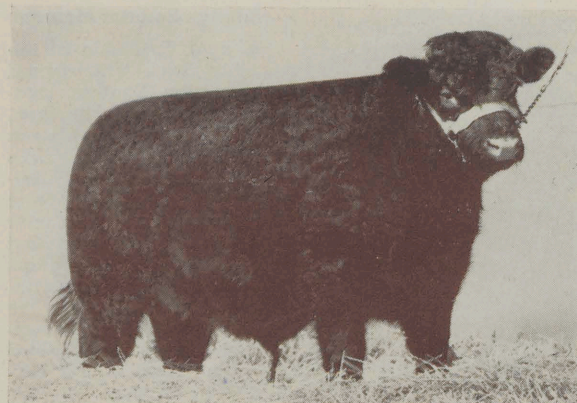
Lot 10

Bull

EDELLYN SENATOR MERCURY 2619-528 (RE 1474)

Dark roan, calved Sept. 27, 1950. Bred and owned by Thos. E. Wilson, Wilson, Ill.

SIRE	Edellyn Diamond Mercury 2190521 Roan, Thos. E. Wilson	Calrossie Mercury 1957318 White, John MacGillivray
	Edellyn Twofold Mercury 2390225 Dark roan, Thos. E. Wilson	Coldoch Bonny Rothes 2031989 Roan, W. McNair Snadden
DAM	Edellyn Princess Royal 19th 2087433 Roan, Thos. E. Wilson	Calrossie Mercury 1957318 White, J. MacGillivray
	Edellyn Royal Leader 2057560 Red, W. McNair Snadden	Blood Royal 13th 1753600 Red, Duncan M. Stewart
	Edellyn Dorothy 21st 2322803 Red, Thos. E. Wilson	Coldoch Sensation (275892) Red, W. M. Snadden
	Lady Dorothy 94th 2082528 Red, Merryvale Farm	Coldoch Bonny Rothes 2031989 Roan, W. McNair Snadden
		Millhills Senator 1943704 Red, W. J. Russell
		Lady Dorothy 91st 1997209 Red, W. J. Russell



Edellyn Glorious Leader

Edellyn Glorious Leader

His sire, Edellyn Rothes Leader, is owned by Henry Knight of Kentucky and is out of the dam of Edellyn Royal Leader. His dam, Edellyn Jealousy 11th, is one of the top daughters of Calrossie Mercury. His granddam, Scotston Jealous Jean, is the dam of Edellyn Royal Leader 33rd, the famous Circle M Ranch sire and one of her daughters produced our own great sire Edellyn Royal Leader 23rd. There is every reason to expect great results from this good headed, well balanced bull.

*From the Same Family that
Produced the Famous 23rd*

Lot 11

EDELLYN GLORIOUS LEADER 2653-376 (RE 1515)

Red, calved May 7, 1951. Bred and owned by Thos. E. Wilson, Wilson, Ill.

SIRE

Saltoun Squadron Leader 2371578
Dark roan, A. M. T. Fletcher

Edellyn Rothes Leader 2526783
Red, Thos. E. Wilson

Coldoch Bonny Rothes 2031989
Roan, W. McNair Snadden

DAM

Calrossie Mercury 1957318
White, J. MacGillivray

Edellyn Jealousy 11th 2448882
Dark roan, Thos. E. Wilson

Scotston Jealous Jean 1917365
Red, William B. Robertson

{ Uppermill Sentinel (325869)
Red, James Durno
{ Rosebud Brenda (250954)
Dark roan, K. P. MacGillivray

{ Balthayock Grand National (283376)
Red, W. M. Snadden
{ Coldoch Rothes Fairy (162726)
Red, W. McNair Snadden

{ Calrossie Control (255913)
White, J. MacGillivray
{ Calrossie Augusta Opal (179798)
Dark roan, J. MacGillivray

{ Sundial (267072)
Roan, J. Durno
{ Jealousy (132707)
Dark roan, J. & B. Robertson

Bull



This picture bespeaks the high degree of excellence of the famous herd at Edellyn Farms.

STUDY these pedigrees carefully. Note the skillful blending of the blood of Calrossie Mercury and Edellyn Royal Leader. Generation after generation this blend provides a bloodline hookup that relays improvement through the entire breed. You find Edellyn breeding wherever you go. Few leading herds are without it. Edellyn productions are national favorites—a proven way of advancement.

We have not attempted to publish all breeding dates since a breeding list is to be provided on sale day. We assure you, however, that most of the females are well forward in calf. As you are bidding on these royally bred cattle, remember that it doesn't take long to pay for an Edellyn-bred Shorthorn through the premium prices paid for its offspring.



Edellyn Dorothy 25th

Edellyn Dorothy 25th

A very valuable female. She is a direct daughter of Edellyn Royal Leader and out of a beautiful cow sired by Calrossie Mercury. Her dam is a maternal sister to Edellyn Dorothy 21st, reserve champion female at the 1947 International. Her granddam, Lady Dorothy 94th, was the top female in the Miles-of-View dispersion. This heifer is in calf since October 11 to Glastulich Freebooter by Calrossie Welcome.

*A Daughter of Edellyn Royal
Leader Out of a Great
Mercury Cow*

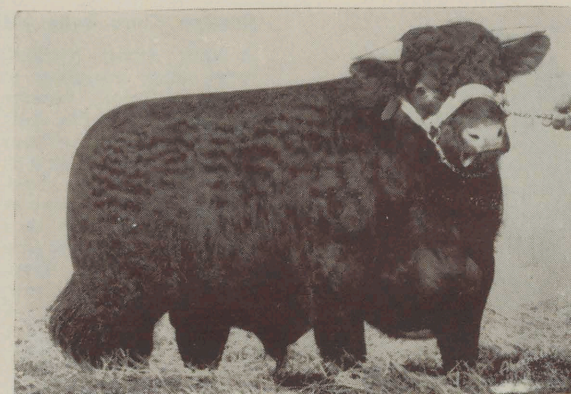
Lot 12

Female

EDELLYN DOROTHY 25TH 2588863 (RE 1398)

Red, calved Feb. 22, 1950. Bred and owned by Thos. E. Wilson, Wilson, Ill.

SIRE	Coldoch Sensation (275892) Red, W. McNair Snadden	{	Bapton Crocus Leader (261766) Red, Bapton Shorthorn Co., Ltd.
			Aldie Rosemary (160049) Red, Finlay MacGillivray
DAM	Edellyn Royal Leader 2057560 Red, W. McNair Snadden	{	Balthayock Grand National (283376) Dark roan, R. Wylie Hill
	Coldoch Bonny Rothes 2031989 Roan, W. McNair Snadden		Coldoch Rothes Fairy (162726) Red, W. McNair Snadden
DAM	Calrossie Mercury 1957318 White, J. MacGillivray	{	Calrossie Control (255913) White, J. MacGillivray
	Edellyn Dorothy 20th 2247157 Red, Thos. E. Wilson		Calrossie Augusta Opal (179796) Dark roan, J. MacGillivray
DAM	Lady Dorothy 94th 2082528 Red, Merryvale Farm	{	Millhills Senator 1943704 Red, W. J. Russell
			Lady Dorothy 91st 1997209 Red, W. J. Russell



Above is shown the bull Edellyn Royal Leader 101st that was purchased by Pennsylvania State College in the 1950 Edellyn sale at \$3,000. He is a full brother to Edellyn Clipper 51st, the beautiful heifer that sells as Lot 13 in this sale.

*Entered in this Sale as
A Special Attraction*

Lot 13

Female

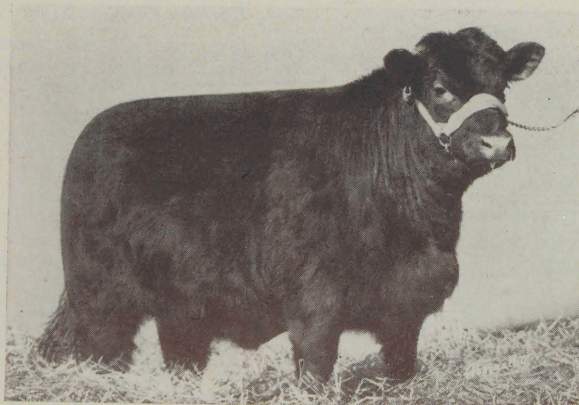
EDELLYN CLIPPER 51ST 2611-499 (RE 1447)

Dark roan, calved July 20, 1950. Bred and owned by Thos. E. Wilson, Wilson, Ill.

SIRE	Coldoch Sensation (275892) Red, W. McNair Snadden	{	Bapton Crocus Leader (261766) Red, Bapton Shorthorn Co., Ltd.
			Aldie Rosemary (160049) Red, Finlay MacGillivray
DAM	Edellyn Royal Leader 2057560 Red, W. McNair Snadden	{	Balthayock Grand National (283376) Dark roan, R. Wylie Hill
	Coldoch Bonny Rothes 2031989 Roan, W. McNair Snadden		Coldoch Rothes Fairy (162726) Red, W. McNair Snadden
DAM	Naemoor Immaculate (315706) White, Robert Moubray	{	Royal Sentry (297376) Roan, K. P. MacGillivray
	Drynie Clipper 20th 2320564 Dark roan, Robert Maclean		Cluny Clara 11th (177671) Dark roan, Charles A. Linzee Gordon
DAM	Drynie Clipper 13th (240604) Roan, Robert Maclean	{	Drynie Copestone (257002) White, Robert Maclean
			Drynie Clipper 5th (150591) Red, Robert Maclean

Edellyn Clipper 51st

We entered her at the last minute as an added attraction. We have no picture of her but she will speak for herself on sale day. She is a direct daughter of Edellyn Royal Leader and is a full sister to Edellyn Royal Leader 101st that sold to Pennsylvania State College in our 1950 sale. The dam is by Naemoor Immaculate whose daughters have all been great producers. This outstanding heifer is in calf to Saltoun Royal Crest by Calrossie Good News.



Edellyn Clara Belle 3rd

Edellyn Clara Belle 3rd

A very sweet headed, level, thick daughter of Edellyn Royal Leader out of one of the best cows ever to come from Lord Lovat's Beaufort herd. Glastullich Fortress was second reserve champion at Perth and sired the 1947 supreme Perth champion, Glastullich Smasher, that sold for 5,000 gns. A grand heifer with a perfect pedigree for foundation purposes.

Sired by the All-American Favorite and Out of a Top Imported Cow

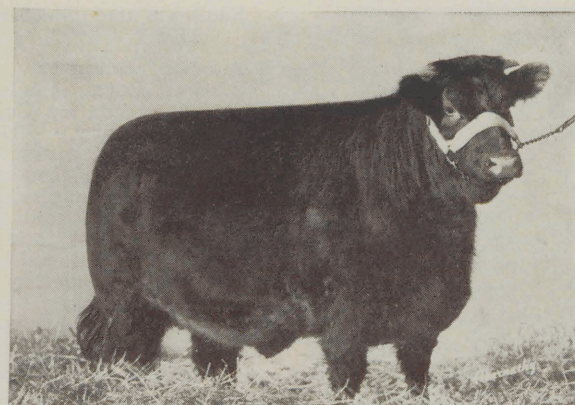
Lot 14

Female

EDELLYN CLARA BELLE 3D 2638-983 (RE 1487)

Red, calved Feb. 7, 1951. Bred and owned by Thos. E. Wilson, Wilson, Ill.

SIRE	Coldoch Sensation (275892) Red, W. McNair Snadden	{ Bapton Crocus Leader (261766) Red, Bapton Shorthorn Co., Ltd.
	Edellyn Royal Leader 2057560 Red, W. McNair Snadden	{ Aldie Rosemary (160049) Red, Finlay MacGillivray
DAM	Coldoch Bonny Rothes 2031989 Roan, W. McNair Snadden	{ Balthayock Grand National (283376) Dark roan, R. Wylie Hill
	Glastullich Fortress (321245) Dark roan, Wm. J. MacGillivray	{ Coldoch Rothes Fairy (162726) Red, W. McNair Snadden
	Beaufort Clara Belle 2479223 Red, Lord Lovat	{ Lawton President Roosevelt (308482) Red, Wm. Henderson
	Clara Belle (230678) Red, John MacGillivray, Jr.	{ Calrossie Augusta Valerie (230650) Roan, John MacGillivray
		{ Calrossie Drum Major (297335) Red, John MacGillivray
		{ Clarice 6th (160981) Dark roan, James Murray



Edellyn Princess Royal 34th

Edellyn Princess Royal 34th

Another beautiful daughter of Edellyn Royal Leader out of this same great Calrossie Mercury cow that produced the Iowa State Fair grand champion, Edellyn Twofold Mercury. This excellent heifer is in calf since September 26, 1951, to Glastullich Freebooter by Calrossie Welcome.

Out of the Same Great Mercury Cow that Produced Edellyn Twofold Mercury

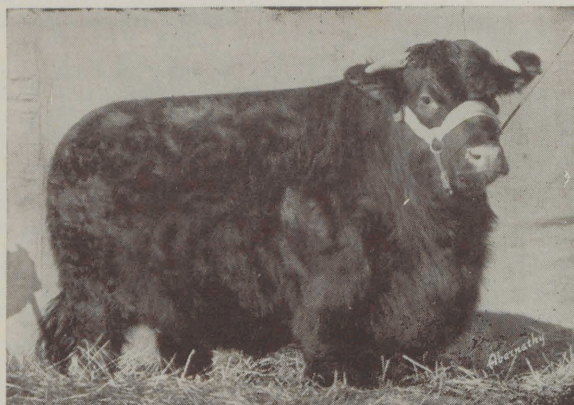
Lot 15

Female

EDELLYN PRINCESS ROYAL 34TH 2611-504 (RE 1452)

Dark roan, calved Sept. 9, 1950. Bred and owned by Thos. E. Wilson, Wilson, Ill.

SIRE	Coldoch Sensation (275892) Red, W. McNair Snadden	{ Bapton Crocus Leader (261766) Red, Bapton Shorthorn Co., Ltd.
	Edellyn Royal Leader 2057560 Red, W. McNair Snadden	{ Aldie Rosemary (160049) Red, Finlay MacGillivray
DAM	Coldoch Bonny Rothes 2031989 Roan, W. McNair Snadden	{ Balthayock Grand National (283376) Dark roan, R. Wylie Hill
	Calrossie Mercury 1957318 White, J. MacGillivray	{ Coldoch Rothes Fairy (162726) Red, W. McNair Snadden
	Edellyn Princess Royal 19th 2087433 Roan, Thos. E. Wilson	{ Calrossie Control (255913) White, J. MacGillivray
	Blood Royal 13th 1753600 Red, Duncan M. Stewart	{ Calrossie Augusta Opal (179796) Dark roan, John MacGillivray
		{ Emily Golden Rain 1753689 Roan, R. D. S. Main
		{ Blood Royal 10th 1753599 Roan, D. M. Stewart



Above is shown Edellyn Orange Blossom 85th that sold in the 1948 Edellyn sale to Henry Knight of Kentucky at \$5,200. She is a full sister to Lot 16 in this sale.

*Her Full Sister Topped the
1948 Edellyn Sale at \$5200*

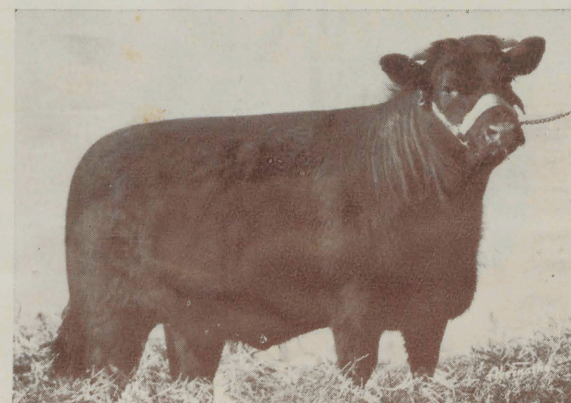
Lot 16

Female

EDELLYN ORANGE BLOSSOM 85TH 2638-993 (RE 1486)

Dark roan, calved Jan. 5, 1951. Bred and owned by Thos. E. Wilson, Wilson, Ill.

SIRE	Coldoch Sensation (275892) Red, W. McNair Snadden	{	Bapton Crocus Leader (261766) Red, Bapton Shorthorn Co., Ltd.
			Aldie Rosemary (160049) Red, Finlay MacGillivray
Edellyn Royal Leader 2057560 Red, W. McNair Snadden		{	Balthayock Grand National (283376) Dark roan, R. Wylie Hill
			Coldoch Rothes Fairy (162726) Red, W. McNair Snadden
DAM	Calrossie Mercury 1957318 White, J. MacGillivray	{	Calrossie Control (255913) White, J. MacGillivray
			Calrossie Augusta Opal (179796) Dark roan, John MacGillivray
Edellyn Orange Blossom 50th 2140747 Red, Thos. E. Wilson		{	Cruggleton Bugler 1831196 Red, A. J. Marshall
			Morning Blossom 17th =225348= Red, J. Douglas & Sons
	Morning Blossom 22d 1846145 Red, J. Douglas & Sons		



Edellyn Rosewood 66th

Edellyn Rosewood 66th

A very good heifer and a direct daughter of Edellyn Royal Leader. She is a full sister to Edellyn Rosewood 44th, purchased by P. F. Law of Canada. This family has continually supplied our sale with some of the very best cattle, including the top bull Edellyn Modest Mercury. Knowing this family, we are of the opinion that she will make a great brood cow.

*There's a Top Animal From
This Family in Every
Edellyn Sale*

Lot 17

Female

EDELLYN ROSEWOOD 66TH 2619-537 (RE 1470)

Red, calved Oct. 23, 1950. Bred and owned by Thos. E. Wilson, Wilson, Ill.

SIRE	Coldoch Sensation (275892) Red, W. McNair Snadden	{	Bapton Crocus Leader (261766) Red, Bapton Shorthorn Co., Ltd.
			Aldie Rosemary (160049) Red, Finlay MacGillivray
Edellyn Royal Leader 2057560 Red, W. McNair Snadden		{	Balthayock Grand National (283376) Dark roan, R. Wylie Hill
			Coldoch Rothes Fairy (162726) Red, W. McNair Snadden
DAM	Edellyn Command 2000000 Roan, Chas. A. Linzee Gordon	{	Calrossie Command (275428) Dark roan, J. MacGillivray
			Cluny Rosewood 33d 1917362 Red, Chas. A. Linzee Gordon
Edellyn Rosewood 33d 2087434 Red, Thos. E. Wilson		{	Calrossie Lord Rothes 1634147 Roan, John MacGillivray
			Winmoor Rosewood 4th 1378327 Red, W. H. Schendorf
	Edellyn Rosewood 17th 1772341 Red, Thos. E. Wilson		



This is the head of Edellyn Royal Leader 22nd, the great sire that heads the Elcona herd in Indiana. He is a full brother to Lot 18 in this sale.

Edellyn Orange Blossom 83rd

You may buy her with confidence. She is a full sister to Edellyn Royal Leader 22nd, the bull that has made such a sensational record in the herd of Mr. and Mrs. Ernest M. Sims, Elkhart, Indiana. Don't forget that this is the same famous Orange Blossom family that produced Browndale Count. This heifer is in calf since November 13, 1951, to Saltoun Royal Crest by Calrossie Good News.

A Full Sister to Elcona's Famous Herd Bull

Lot 18

EDELLYN ORANGE BLOSSOM 83D 2611-502 (RE 1442)

Red, calved July 8, 1950. Bred and owned by Thos. E. Wilson, Wilson, Ill.

Female

SIRE

Coldoch Sensation (275892)
Red, W. McNair Snadden

Edellyn Royal Leader 2057560
Red, W. McNair Snadden

Coldoch Bonny Rothes 2031989
Roan, W. McNair Snadden

DAM

Calrossie Mercury 1957318
White, J. MacGillivray

Edellyn Orange Blossom 42d 2071129
Roan, Thos. E. Wilson

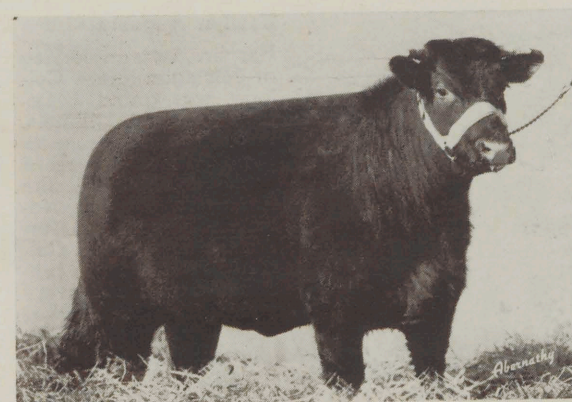
Edellyn Orange Blossom 23d 1923701
Red, Thos. E. Wilson

{ Bapton Crocus Leader (261766)
Red, Bapton Shorthorn Co., Ltd.
{ Aldie Rosemary (160049)
Red, Finlay MacGillivray

{ Balthayock Grand National (283376)
Dark roan, R. Wylie Hill
{ Coldoch Rothes Fairy (162726)
Red, W. McNair Snadden

{ Calrossie Control (255913)
White, J. MacGillivray
{ Calrossie Augusta Opal (179796)
Dark roan, J. MacGillivray

{ Sultan Browndale 1772330
Roan, Thos. E. Wilson
{ Morning Blossom 22d 1846145
Red, J. Douglas & Sons



Edellyn Broadhooks 42nd

Edellyn Broadhooks 42nd

In order to make certain that his will be the strongest Edellyn female offering in history, we have included several daughters of Edellyn Royal Leader, that should never leave Edellyn Farms. This is one of them. Her dam was junior champion as a calf at the Ohio State Fair and is recognized as one of the best cows in the Edellyn herd. A bull used by H. L. Wernicke & Son and a top female in the Hi Ho herd are full brother and sister to Edellyn Broadhooks 42nd. She is in calf since Feb. 12 to Edellyn Squadron Leader.

Another Member of the Famous Edellyn Broadhooks Family

Lot 19

EDELLYN BROADHOOKS 42D 2588858 (RE 1423)

Red, calved May 27, 1950. Bred and owned by Thos. E. Wilson, Wilson, Ill.

Female

SIRE

Coldoch Sensation (275892)
Red, W. McNair Snadden

Edellyn Royal Leader 2057560
Red, W. McNair Snadden

Coldoch Bonny Rothes 2031989
Roan, W. McNair Snadden

DAM

Brawith Count 1846144
Roan, David Douglas

Edellyn Broadhooks 6th 1929053
Roan, Thos. E. Wilson

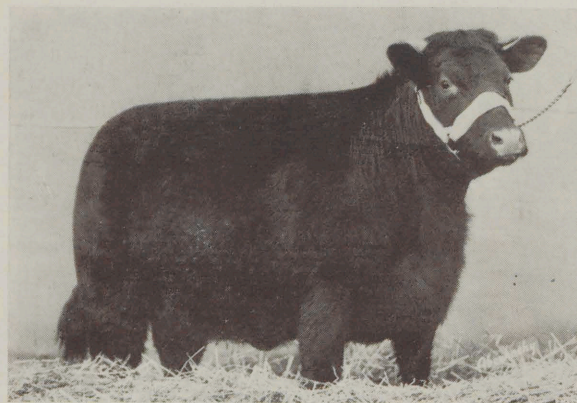
Edellyn Broadhooks 4th 1852318
Roan, Thos. E. Wilson

{ Bapton Crocus Leader (261766)
Red, Bapton Shorthorn Co., Ltd.
{ Aldie Rosemary (160049)
Red, Finlay MacGillivray

{ Balthayock Grand National (283376)
Dark roan, R. Wylie Hill
{ Coldoch Rothes Fairy (162726)
Red, W. McNair Snadden

{ Brawith Boy 1836058
Roan, Hugh S. Black
{ Morning Blossom 22d 1846145
Red, James Douglas & Sons

{ Raveni Leader 1680652
Roan, T. Dorsey Jones
{ Collynie Broadhooks 12th 1773004
Red, Duthie Webster



Edellyn Augusta 43rd

Edellyn Augusta 43rd

Her sire, now in service at Michigan State College, was grand champion at the Illinois, Indiana and Wisconsin State Fairs and reserve grand champion at the American Royal National Show in 1949. Her dam, a daughter of Calrossie Mercury, has produced a great calf every year. This heifer was bred January 18 to Saltoun Royal Crest by Calrossie Good News.

*Her Sire was Many Times
A Grand Champion*

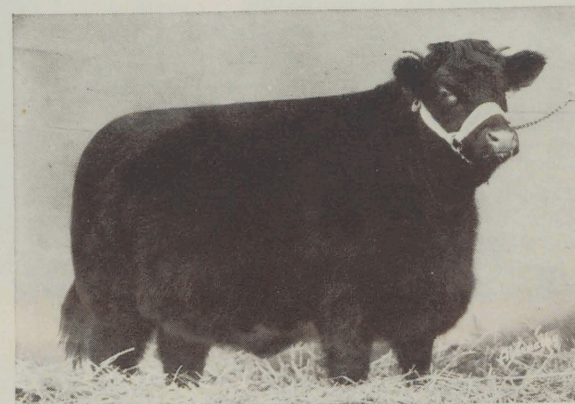
Lot 20

Female

EDELLYN AUGUSTA 43D 2619-529 (RE 1473)

Red, calved Oct. 6, 1950. Bred and owned by Thos. E. Wilson, Wilson, Ill.

SIRE	Edellyn Royal Leader 2057560 Red, W. McNair Snadden	Coldoch Sensation (275892) Red, W. M. Snadden
		Coldoch Bonny Rothes 2031989 Roan, W. McNair Snadden
	Edellyn Royal Leader 66th 2448874 Red, Thos. E. Wilson	Balthayock Grand National (283376) Dark roan, R. Wylie Hill
		Bantaskin Secret 4th (204947) Dark roan, J. Baird & Co. Ltd.
DAM	Calrossie Mercury 1957318 White, J. MacGillivray	Calrossie Control (255913) White, J. MacGillivray
		Calrossie Augusta Opal (179796) Dark roan, J. MacGillivray
	Edellyn Augusta 26th 2306931 Red, Thos. E. Wilson	Browndale Sensation 2d 1817248 Red, Haylands Farms
		Milky Way Goldie 1806167 Red, Milky Way Farms
	Conner's Augusta 10th 2038363 Red, Conner Prairie Farm	



Edellyn Beauty 29th

Edellyn Beauty 29th

One of the best and backed by breeding we like. She is a daughter of the many times grand champion and famous sire, Edellyn Royal Leader 66th that sold at \$6,000, top price of our 1950 sale, to Michigan State College. Her dam, Village Beauty A 4th, is the dam of Edellyn Royal Leader 19th, owned by Dr. S. A. Donahoe, and one of the most successful sires ever produced at Edellyn. You will like the heifer and she is certain to prove a great brood cow. She was bred January 11 to Saltoun Royal Crest by Calrossie Good News.

*One of the Best and Backed
By Breeding We Like*

Lot 21

Female

EDELLYN BEAUTY 29TH 2619-530 (RE 1469)

Red, calved Oct. 11, 1950. Bred and owned by Thos. E. Wilson, Wilson, Ill.

SIRE	Edellyn Royal Leader 2057560 Red, W. McNair Snadden	Coldoch Sensation (275892) Red, W. M. Snadden
		Coldoch Bonny Rothes 2031989 Roan, W. McNair Snadden
	Edellyn Royal Leader 66th 2448874 Red, Thos. E. Wilson	Balthayock Grand National (283376) Dark roan, R. Wylie Hill
		Bantaskin Secret 4th (204947) Dark roan, J. Baird & Co. Ltd.
DAM	Shore Acres Command 1945446 Roan, C. A. Linzee Gordon	Calrossie Command (275428) Dark roan, J. MacGillivray
		Cluny Augusta 49th 1923541 Red, Chas. A. Linzee Gordon
	Village Beauty A 4th 2115187 Roan, Arnold Bros.	Glenburn Field Marshal 1709714 Red, F. H. Deacon
		Village Beauty 8th 1606908 Red, Hopley Stock Farm
	Village Beauty A 1802315 Red, Thos. E. Wilson	



1951

Best 10 head at the 1951
American Royal at Kansas
City.

All Bred
and
exhibited
by
Edellyn
Farms



1950

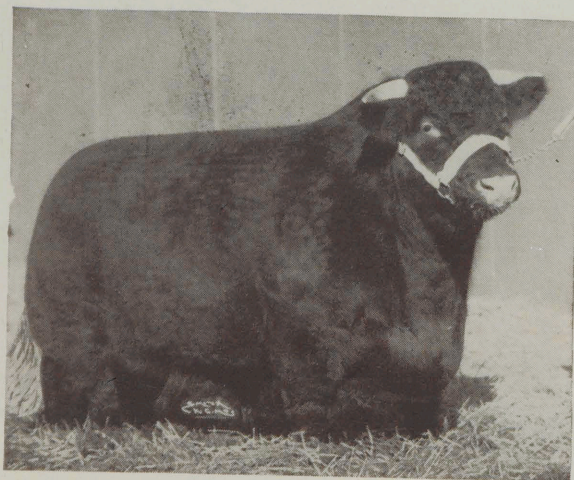
Best 10 head at the
1950 International
and the National
Show at Memphis.

PRODUCED thru the
blending of Edel-
lyn's popular blood
lines, they stand as a
challenging symbol of
the value of the Cal-
rossie Mercury and
Edellyn Royal Leader
as AMERICA'S GREAT-
EST IMPROVING SIRES
OF SHORTHORN CAT-
TLE.

1949

Best 10 head at the
1949 International
and the American
Royal



**Edellyn Goldie 17th**

A daughter of the \$6,000 Edellyn Royal Leader 66th, now in service at Michigan State College. Her dam was sired by the Perth supreme champion, Calrossie Mercury. Another opportunity to buy a female backed by the Leader-Mercury blood combination.

Above is shown the many times grand champion Edellyn Royal Leader 66th, purchased by Michigan State College in the 1950 Edellyn sale. He is the sire of Lots 20, 21 and 22 in this sale.

*She is Backed by the Leader--
Mercury Blood Combination*

Lot 22

Female

EDELLYN GOLDIE 17TH 2638-989 (RE 1492)

Red, calved Feb. 13, 1951. Bred and owned by Thos. E. Wilson, Wilson, Ill.

SIRE
Edellyn Royal Leader 2057560
Red, W. McNair Snadden

Edellyn Royal Leader 66th 2448874
Red, Thos. E. Wilson

Bantaskin Secret 13th 2337703
Dark roan, Alexander A. Baird

DAM
Calrossie Mercury 1957318
White, John MacGillivray

Edellyn Goldie 14th 2452405
Dark roan, Thos. E. Wilson

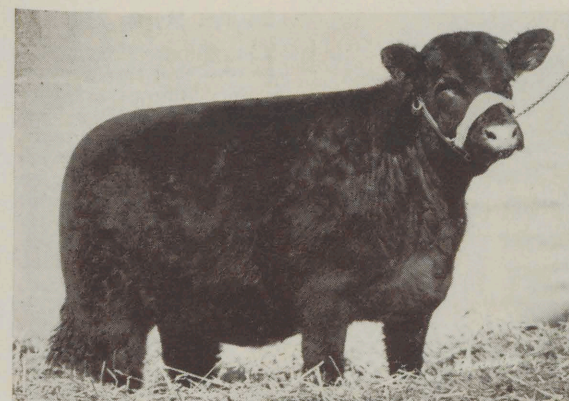
Goldie 8th 1983560
Roan, Beath Farms

{ Coldoch Sensation (275892)
Red, W. M. Snadden
{ Coldoch Bonny Rothes 2031989
Roan, W. McNair Snadden

{ Balthayock Grand National (283376)
Dark roan, R. Wylie Hill
{ Bantaskin Secret 4th (204947)
Dark roan, J. Baird & Co. Ltd.

{ Calrossie Control (255913)
White, John MacGillivray
{ Calrossie Augusta Opal (179796)
Dark roan, John MacGillivray

{ Roland Clipper =225957=
Red, Beath Farms
{ Edellyn Goldie 6th 1843534
Roan, Thos. E. Wilson

**Edellyn Clipper 53rd****Edellyn Clipper 53rd**

A daughter of Edellyn Royal Leader 100th, undefeated summer yearling bull at all major shows of 1949 and champion at many 1950 shows, now in service in the Rasmussen herd in Iowa. Note that this attractive heifer is out of a direct daughter of the noted Kirkton Baronet. The right kind of a heifer backed by the right kind of a pedigree. Sells open.

*A Daughter of a Champion
Out of a Kirkton Baronet Cow*

Lot 23

Female

EDELLYN CLIPPER 53D 2638-984 (RE 1491)

Red, calved March 26, 1951. Bred and owned by Thos. E. Wilson, Wilson, Ill.

SIRE
Edellyn Royal Leader 2057560
Red, W. McNair Snadden

Edellyn Royal Leader 100th 2508943
Red, Thos. E. Wilson

Elmhurst Rosewood 5th 2230446
Roan, F. S. Davidson

DAM
Kirkton Baronet (335904)
Dark roan, K. P. MacGillivray

Calrossie Clipper Pet 2518675
Red, John & D. P. MacGillivray

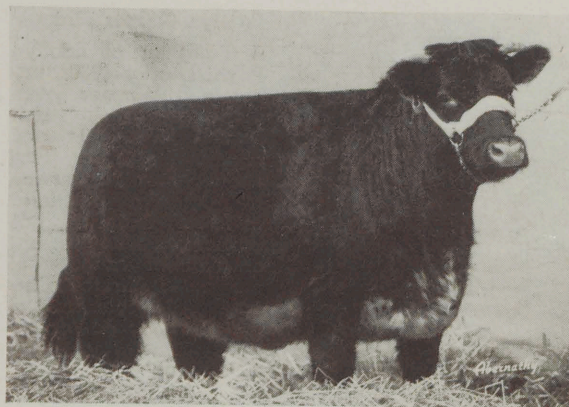
Calrossie Clipper Paddy (230659)
Dark roan, John MacGillivray

{ Coldoch Sensation (275892)
Red, W. M. Snadden
{ Coldoch Bonny Rothes 2031989
Roan, W. McNair Snadden

{ Edellyn Modern Mercury 2024078
Roan, Thos. E. Wilson
{ Rosewood Emblem 2066410
Red, John Gardhouse & Sons

{ Lawton Field Marshal (314137)
Red, Wm. Henderson
{ Golden Beautiful (230682)
Roan, K. P. MacGillivray

{ Calrossie Drum Major (297335)
Red, John MacGillivray
{ Calrossie Clipper Pansy (169779)
Roan, John MacGillivray



Edellyn Myrtle 26th

Edellyn Myrtle 26th

You will note from her picture that she has the style, balance, quality and character that we all like. She is a daughter of Edellyn Royal Leader 23rd whose calves won first prize in the get-of-sire class at the 1950 International. She is in calf since October 21, 1951, to Saltoun Royal Crest by Calrossie Good News.

*A Daughter of the Bull that
Sired an International
First Prize "Get"*

Lot 24**EDELLYN MYRTLE 26TH 2588869 (RE 1421)****Female**

Dark roan, calved May 10, 1950. Bred and owned by Thos. E. Wilson, Wilson, Ill.

SIRE	Edellyn Royal Leader 2057560 Red, W. McNair Snadden	{ Coldoch Sensation (275892) Red, W. M. Snadden
	Edellyn Royal Leader 23d 2263178 Red, Thos. E. Wilson	{ Coldoch Bonny Rothes 2031989 Roan, W. McNair Snadden
DAM	Edellyn Jealousy 3d 2126873 Red, Thos. E. Wilson	{ Calrossie Mercury 1957318 White, J. MacGillivray
	Glenburn Royal Flush =240224= Red, W. J. Russell	{ Scotston Jealous Jean 1917365 Red, Wm. B. Robertson
	Glenburn Myrtle 15th 2325675 Dark roan, F. H. Deacon & Son	{ Calrossie Bondsman 2060919 RLW, John MacGillivray
	Glenburn Myrtle 10th =310072= White, F. H. Deacon & Son	{ Clipper Queen 19th 2081671 Dark roan, William Peterkin
		{ Klaymor Royal =226788= White, W. J. Russell
		{ Glenburn Myrtle 5th =276056= Dark roan, F. H. Deacon



Edellyn Helen

Edellyn Helen

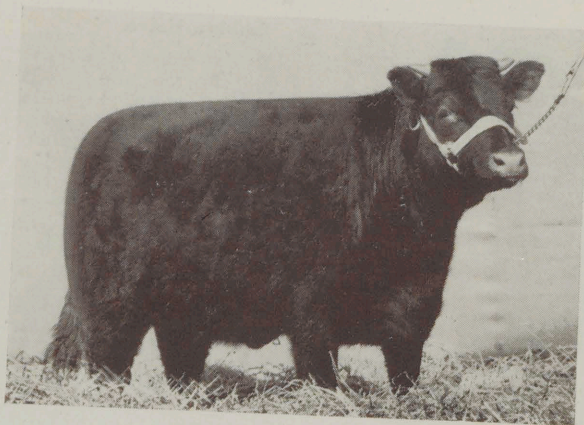
A daughter of Edellyn Royal Leader 23rd whose calves won first prize in the get-of-sire class at the International Live Stock Show in 1950. This is a sweet heifer calf out of a very good Willow Lee cow sired by Beathton Favorite. She sells open.

*A Sweet Heifer by the
Sire of Champions*

Lot 25**EDELLYN HELEN 2653-387 (RE 1521)****Female**

Red, calved June 19, 1951. Bred and owned by Thos. E. Wilson, Wilson, Ill.

SIRE	Edellyn Royal Leader 2057560 Red, W. McNair Snadden	{ Coldoch Sensation (275892) Red, W. M. Snadden
	Edellyn Royal Leader 23d 2263178 Red, Thos. E. Wilson	{ Coldoch Bonny Rothes 2031989 Roan, W. McNair Snadden
DAM	Edellyn Jealousy 3d 2126873 Red, Thos. E. Wilson	{ Calrossie Mercury 1957318 White, J. MacGillivray
	Beathton Favorite 2230106 Dark roan, Beath Farms	{ Scotston Jealous Jean 1917365 Red, Wm. B. Robertson
	Willow-Lee Helen 2325127 Roan, O. W. House	{ Klaymor Beau Ideal =233424= Dark roan, W. J. Russell
	Millbrook Helen 10th 2202302 Roan, Roy T. Johnson	{ Beathton Rosewood 2d =297982= Red, Beath Farms
		{ Klaymor Diamond 2048553 Roan, W. J. Russell
		{ Millbrook Helen 8th 2058214 Red, Roy T. Johnson



Edellyn Augusta 44th

Edellyn Augusta 44th

The record made by sons and daughters of Edellyn Royal Leader 23rd in 1950 and 1951 shows leads us to believe that we should keep all of his heifers. However, he is still in active service and we are taking the gamble in order to make this the strongest female offering in Edellyn History. This heifer is out of one of our younger daughters of Calrossie Mercury, she a member of the Cluny Augusta family.

*Sired by the 23rd and Out
Of a good Mercury Cow*

Lot 26

EDELLYN AUGUSTA 44TH 2638-978 (RE 1481)

Red, calved Jan. 4, 1951. Bred and owned by Thos. E. Wilson, Wilson, Ill.

Female

SIRE
Edellyn Royal Leader 2057560
Red, W. McNair Snadden

Edellyn Royal Leader 23d 2263178
Red, Thos. E. Wilson

Edellyn Jealousy 3d 2126873
Red, Thos. E. Wilson

DAM
Calrossie Mercury 1957318
White, J. MacGillivray

Edellyn Augusta 32d 2415065
Dark roan, Thos. E. Wilson

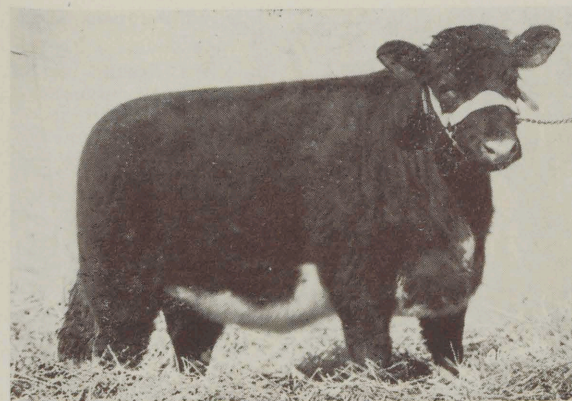
Augusta 54th 2075430
Red, Beath Farms

{ Coldoch Sensation (275892)
Red, W. M. Snadden
{ Coldoch Bonny Rothes 2031989
Roan, W. McNair Snadden

{ Calrossie Mercury 1957318
White, J. MacGillivray
{ Scotston Jealous Jean 1917365
Red, Wm. B. Robertson

{ Calrossie Control (255913)
White, J. MacGillivray
{ Calrossie Augusta Opal (179796)
Dark roan, J. MacGillivray

{ Roland Clipper =225957=
Red, Beath Farms
{ Cluny Augusta 53d 2074748
Red, Mrs. B. H. Linzee Gordon



Edellyn Crocus 10th

Edellyn Crocus 10th

A dark roan daughter of Edellyn Royal Leader 23rd whose calves won first prize in the get-of-sire class at the 1950 International Live Stock Show. She is out of an imported cow sired by Bapton Air Pilot. She sells open.

*Out of an Imported Daughter
Of Bapton Air Pilot*

Lot 27

EDELLYN CROCUS 10TH 2638-985 (RE 1502)

Roan, calved April 11, 1951. Bred and owned by Thos. E. Wilson, Wilson, Ill.

Female

SIRE
Edellyn Royal Leader 2057560
Red, W. McNair Snadden

Edellyn Royal Leader 23d 2263178
Red, Thos. E. Wilson

Edellyn Jealousy 3d 2126873
Red, Thos. E. Wilson

DAM
Bapton Air Pilot (298495)
Dark roan, J. V. Rank

Bapton Crocus 56th 2271420
Roan, J. V. Rank

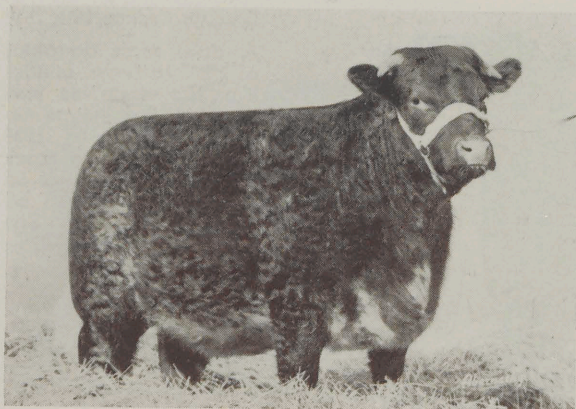
Bapton Crocus 29th (174598)
Red, Bapton Shorthorn Co. Ltd.

{ Coldoch Sensation (275892)
Red, W. M. Snadden
{ Coldoch Bonny Rothes 2031989
Roan, W. McNair Snadden

{ Calrossie Mercury 1957318
White, J. MacGillivray
{ Scotston Jealous Jean 1917365
Red, Wm. B. Robertson

{ Bapton Air Control (285606)
Red, J. V. Rank
{ Bapton Broadhooks 6th (164842)
Roan, Bapton Shorthorn Co. Ltd.

{ Bapton Royal Robin (255311)
Red, Bapton Shorthorn Co. Ltd.
{ Bapton Crocus 16th (125565)
Red, C. H. E. Chubb

**Edellyn Augusta 42nd**

A good daughter of Edellyn Royal Leader 23rd, whose calves won first prize in the get-of-sire class at the 1950 International. This is a wonderful MacGillivray pedigree and the heifer is in calf since September 20, 1951, to Saltoun Royal Crest by Calrossie Good News.

Above is shown Edellyn Augusta 37th, purchased by Clausen Bros. of Iowa in our 1951 sale at \$1,300. She is out of the same cow as Lot 28 in this sale.

*She Will Have a Great Calf by
Saltoun Royal Crest*

Lot 28

Female

EDELLYN AUGUSTA 42D 2588854 (RE 1424)

Red, calved May 6, 1950. Bred and owned by Thos. E. Wilson, Wilson, Ill.

SIRE	Edellyn Royal Leader 2057560 Red, W. McNair Snadden	{ Coldoch Sensation (275892) Red, W. M. Snadden
	Edellyn Royal Leader 23d 2263178 Red, Thos. E. Wilson	{ Coldoch Bonny Rothes 2031989 Roan, W. McNair Snadden
DAM	Edellyn Jealousy 3d 2126873 Red, Thos. E. Wilson	{ Calrossie Mercury 1957318 White, J. MacGillivray
	Edellyn Goldfinder 1786376 Roan, Thos. E. Wilson	{ Scotston Jealous Jean 1917365 Red, Wm. B. Robertson
	Morlunda Augusta 3d 1973032 Red, Oscar Nelson	{ Calrossie Goldfinder 1753587 White, John MacGillivray
	Aldie Pamela Augusta 1899147 Roan, Finlay MacGillivray	{ Edellyn Venus 5th 1714632 Red, Thos. E. Wilson
		{ Calrossie Waverly (262376) Dark roan, J. MacGillivray
		{ Augusta Maid (110115) Red, F. MacGillivray

**Edellyn Orange Blossom 86th**

A dark red daughter of Edellyn Foremost Mercury out of a dam sired by the International grand champion, Sultan Browndale. We value this Durno Orange Blossom family very highly at Edellyn Farms. She sells open.

Edellyn Orange Blossom 86th

*From Our Famous Durno
Orange Blossom Family*

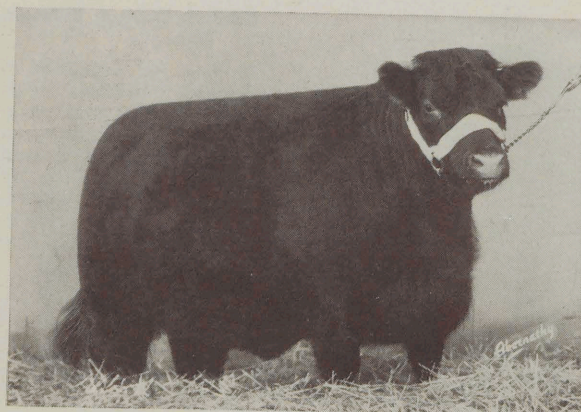
Lot 29

Female

EDELLYN ORANGE BLOSSOM 86TH 2653-390 (RE 1512)

Red, calved May 8, 1951. Bred and owned by Thos. E. Wilson, Wilson, Ill.

SIRE	Calrossie Mercury 1957318 White, J. MacGillivray	{ Calrossie Control (255913) White, J. MacGillivray
	Edellyn Formost Mercury 2247140 Dark roan, Thos. E. Wilson	{ Calrossie Augusta Opal (179796) Dark roan, J. MacGillivray
DAM	Scotston Jealous Jean 1917365 Red, William B. Robertson	{ Sundial (267072) Roan, J. Durno
	Sultan Browndale 1772330 Roan, Thos. E. Wilson	{ Jealousy (132707) Dark roan, J. & D. Robertson
	Edellyn Orange Blossom 36th 1998432 Red, Thos. E. Wilson	{ Glenburn Field Marshal 1709714 Red, F. H. Deacon
	Orange Shade 1773052 Roan, James Durno	{ Rookwood Golden Chain 5th 1712052 Roan, C. F. Curtiss
		{ Glastullich Watchman 1772988 Red, W. MacGillivray
		{ Uppermill Orange Bud 1773100 Roan, J. & L. Durno



Edellyn Rosewood 65th

Edellyn Rosewood 65th

Study the picture of this heifer, then study her pedigree carefully. After such a study, you will want to own her. She inherits the blood of the Perth champion Calrossie Mercury from both sides of her pedigree and is just the kind of a female you would expect from such ancestry. She is in calf since November 12, 1951, to Saltoun Royal Crest by Calrossie Good News.

*A Mercury from Both
Sides of Her Pedigree*

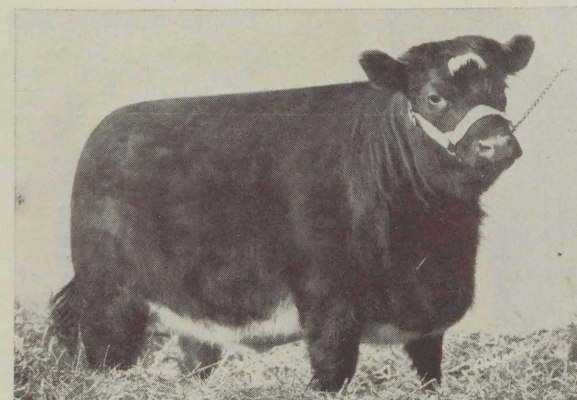
Lot 30

Female

EDELLYN ROSEWOOD 65TH 2611-506 (RE 1436)

Red, calved July 3, 1950. Bred and owned by Thos. E. Wilson, Wilson, Ill.

SIRE	Calrossie Mercury 1957318 White, J. MacGillivray	{ Calrossie Control (255913) White, J. MacGillivray
	Edellyn All-Star Mercury 2415057 Red, Thos. E. Wilson	{ Calrossie Augusta Opal (179796) Dark roan, J. MacGillivray
	Edellyn Flossy Shane 4th 2197016 Red, Thos. E. Wilson	{ Edellyn Royal Leader 2057560 Red, W. McNair Snadden
		{ Calrossie Flossy Shane 1753602 Red, John MacGillivray
DAM	Edellyn Modern Mercury 2024078 Roan, Thos. E. Wilson	{ Calrossie Mercury 1957318 White, J. MacGillivray
	Elmhurst Rosewood 5th 2230446 Roan, F. S. Davidson	{ Glenburn Ramsden Lass 1711819 Roan, F. H. Deacon
	Rosewood Emblem 2066410 Red, John Gardhouse & Sons	{ Velvet Lad 2110112 Red, G. Anderson
		{ Rosewood Pride 2197207 Red, J. Gardhouse & Sons



Edellyn Clipper 52nd

Edellyn Clipper 52nd

This was the senior heifer calf in our 1951 show herd and we have great confidence in her ability to make a top showing in 1952. She comes from a great show family, both her dam and granddam having been exhibited successfully. She is a daughter of the Iowa State Fair grand champion Edellyn Twofold Mercury and sells bred to Edellyn Royal Leader 114th, probably the best bull ever produced at Edellyn Farms. We recommend her very highly.

*She should Win Top Prizes
At Strong 1952 Shows*

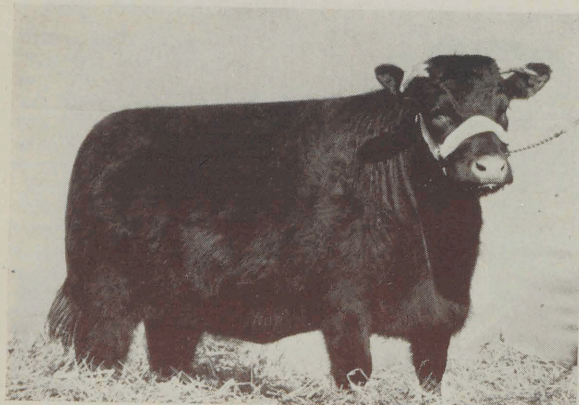
Lot 31

Female

EDELLYN CLIPPER 52D 2619-534 (RE 1457)

Dark roan, calved Sept. 5, 1950. Bred and owned by Thos. E. Wilson, Wilson, Ill.

SIRE	Edellyn Diamond Mercury 2190521 Roan, Thos. E. Wilson	{ Calrossie Mercury 1957318 White, John MacGillivray
	Edellyn Twofold Mercury 2390225 Dark roan, Thos. E. Wilson	{ Coldoch Bonny Rothes 2031989 Roan, W. McNair Snadden
	Edellyn Princess Royal 19th 2087433 Roan, Thos. E. Wilson	{ Calrossie Mercury 1957318 White, J. MacGillivray
		{ Blood Royal 13th 1753600 Red, Duncan M. Stewart
DAM	Edellyn Royal Leader 2057560 Red, W. McNair Snadden	{ Coldoch Sensation (275892) Red, W. M. Snadden
	Edellyn Clipper 38th 2222175 Red, Thos. E. Wilson	{ Coldoch Bonny Rothes 2031989 Roan, W. McNair Snadden
	Edellyn Clipper 22d 1880312 Red, Thos. E. Wilson	{ Raveni Leader 1680652 Roan, T. Dorsey Jones
		{ Ivy Clipper 1558580 Red, A. J. Marshall



Edellyn Rosemary 23rd

Edellyn Rosemary 23rd

A good daughter of Edellyn Twofold Mercury, very thick and well balanced. She will carry the service of Saltoun Royal Crest by Calrossie Good News.

A Mercury from a Very Dependable Family

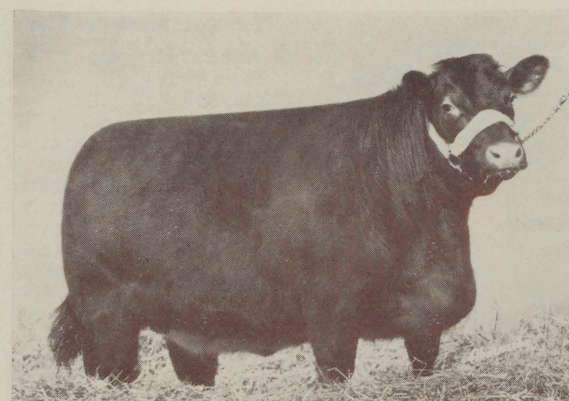
Lot 32

EDELLYN ROSEMARY 23D 2611-505 (RE 1453)

Female

Dark roan, calved July 6, 1950. Bred and owned by Thos. E. Wilson, Wilson, Ill.

SIRE	Edellyn Diamond Mercury 2190521 Roan, Thos. E. Wilson	{	Calrossie Mercury 1957318 White, John MacGillivray
	Edellyn Twofold Mercury 2390225 Dark roan, Thos. E. Wilson	{	Coldoch Bonny Rothes 2031989 Roan, W. McNair Snadden
DAM	Edellyn Princess Royal 19th 2037433 Roan, Thos. E. Wilson	{	Calrossie Mercury 1957318 White, J. MacGillivray
	Phingask Bank Roll 1844925 Red, George Dawson	{	Blood Royal 13th 1753600 Red, Duncan M. Stewart
	Anoka Rosemary 1908415 Red, F. W. Harding	{	Phingask Roll Call (259306) Red, G. Dawson
	Rosemary 117th 1781104 Roan, Milky Way Farms	{	Phingask Broadhooks Beauty (127474) Red, George Dawson
		{	Balmuchy Landlord 1719126 Red, A. P. Gordon
		{	Rosemary 116th 1455018 Roan, W. H. Miner



Edellyn Duchess Gloster 19th

Edellyn Duchess Gloster 19th

A very attractive daughter of the Iowa State Fair grand champion, Edellyn Twofold Mercury. Her dam produced Edellyn Express Mercury, first prize junior bull calf at the Illinois, Indiana and Iowa State Fairs in 1948, now in service in the herd of Leroy Egbert of Ohio. Heifers out of good dependable brood cows are excellent property, and this is just such a heifer.

A Daughter of the Iowa State Fair Grand Champion

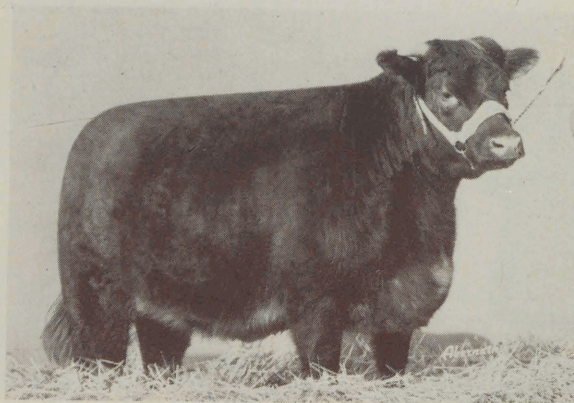
Lot 33

EDELLYN DUCHESS GLOSTER 19TH 2619-535 (RE 1456)

Female

Red, calved Sept. 4, 1950. Bred and owned by Thos. E. Wilson, Wilson, Ill.

SIRE	Edellyn Diamond Mercury 2190521 Roan, Thos. E. Wilson	{	Calrossie Mercury 1957318 White, John MacGillivray
	Edellyn Twofold Mercury 2390225 Dark roan, Thos. E. Wilson	{	Coldoch Bonny Rothes 2031989 Roan, W. McNair Snadden
DAM	Edellyn Princess Royal 19th 2087433 Roan, Thos. E. Wilson	{	Calrossie Mercury 1957318 White, J. MacGillivray
	Cruggleton Aspiration 1989959 Red, A. J. Marshall	{	Blood Royal 13th 1753600 Red, Duncan M. Stewart
	Sni-A-Bar Gloster 50th 2084383 Red, Sni-A-Bar Farms	{	Cruggleton Captivator (276163) RLW, A. J. Marshall
	Sni-A-Bar Gloster 18th 1791136 Red, Sni-A-Bar Farms	{	Augusta Gardenia (120936) Dark roan, A. J. Marshall
		{	Bridgebank Rolox 1595985 Red, A. J. Marshall
		{	Sni-A-Bar Gloster 5th 1450911 Roan, Sni-A-Bar Farms



Edellyn Butterfly 12th

Edellyn Butterfly 12th

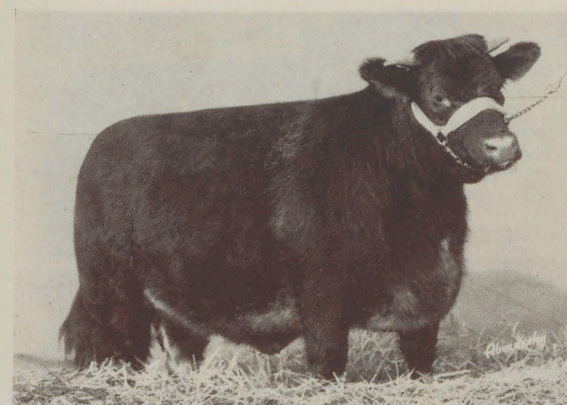
Another daughter of the Iowa State Fair grand champion, Edellyn Twofold Mercury. She is out of a very good imported cow sired by a son of Bridgebank Rosedene. She is bred to Edellyn Royal Leader 114th, perhaps the best bull ever produced at Edellyn Farms.

*Another Mercury Out of
A Good Imported Cow*

Lot 34**EDELLYN BUTTERFLY 12TH 2619-533 (RE 1463)****Female**

Dark roan, calved Oct. 23, 1950. Bred and owned by Thos. E. Wilson, Wilson, Ill.

SIRE	Edellyn Diamond Mercury 2190521 Roan, Thos. E. Wilson	{ Calrossie Mercury 1957318 White, John MacGillivray
	Edellyn Twofold Mercury 2390225 Dark roan, Thos. E. Wilson	{ Coldoch Bonny Rothes 2031989 Roan, W. McNair Snadden
DAM	Edellyn Princess Royal 19th 2087433 Roan, Thos. E. Wilson	{ Calrossie Mercury 1957318 White, J. MacGillivray
	Cruggleton Caldey (256603) Dark roan, A. J. Marshall	{ Blood Royal 13th 1753600 Red, Duncan M. Stewart
	Butterfly Dacca 1984000 Roan, A. J. Marshall	{ Bridgebank Rosedene (213883) White, A. J. Marshall
	Sanquhar Butterfly 20th (140239) Dark roan, A. M., A. W. & O. J. Law	{ Cruggleton Charity (110518) Red, A. J. Marshall
		{ Saltoun Dreadnought (240121) Red, A. M. T. Fletcher
		{ Sanquhar Butterfly 2d (63914) Dark roan, A. M. & O. J. Law



Edellyn Dorothy 26th

Edellyn Dorothy 26th

This daughter of the Iowa State Fair grand champion, Edellyn Twofold Mercury, is a member of one of the most prolific and profitable families in the Edellyn herd. Her dam, a deep, thick cow is a full sister to the sire of Tomahawk, International grand champion steer over all breeds.

*Her Granddam Produced the
Sire of Tomahawk*

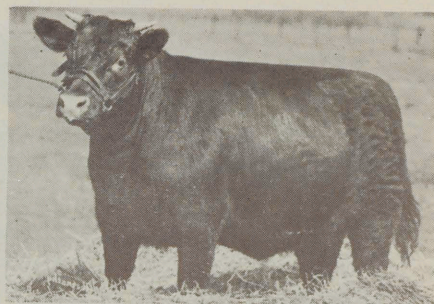
Lot 35**EDELLYN DOROTHY 26TH 2638-986 (RE 1494)****Female**

Dark roan, calved Jan. 5, 1951. Bred and owned by Thos. E. Wilson, Wilson, Ill.

SIRE	Edellyn Diamond Mercury 2190521 Roan, Thos. E. Wilson	{ Calrossie Mercury 1957318 White, John MacGillivray
	Edellyn Twofold Mercury 2390225 Dark roan, Thos. E. Wilson	{ Coldoch Bonny Rothes 2031989 Roan, W. McNair Snadden
DAM	Edellyn Princess Royal 19th 2037433 Roan, Thos. E. Wilson	{ Calrossie Mercury 1957318 White, J. MacGillivray
	Edellyn Command 2000000 Roan, Chas. A. Linzee Gordon	{ Blood Royal 13th 1753600 Red, Duncan M. Stewart
	Edellyn Dorothy 17th 2043440 Red, Thos. E. Wilson	{ Calrossie Command (275428) Dark roan, J. MacGillivray
	Collynie Dorothy 9th 1773007 Roan, Duthie Webster	{ Cluny Rosewood 33d 1917362 Red, Chas. A. Linzee Gordon
		{ Bapton Boxing Day 1772969 Red, C. H. E. Chubb
		{ Collynie Dorothy 7th 1773006 Roan, Duthie Webster

Edellyn Augusta 41st

Her sire, an Iowa State Fair grand champion, is line-bred in the blood of Calrossie Mercury. His dam, one of the top females in an Arnold Bros. sale, is a granddaughter of Cruggleton Willingdon. This is breeding that should produce good results. She is in calf since November 12, 1951, to Edellyn Royal Leader 23rd, sire of the first prize get-of-sire group at the 1950 International.



Augusta's Royal Pride, shown above, was purchased by Edellyn Farms from Arnold Bros. in 1948 at \$1,900. She has been a good producer and is the dam of Lot 36 in this sale.

*She Will Soon Have a Calf
By Edellyn Royal Leader 23rd*

Lot 36

Female

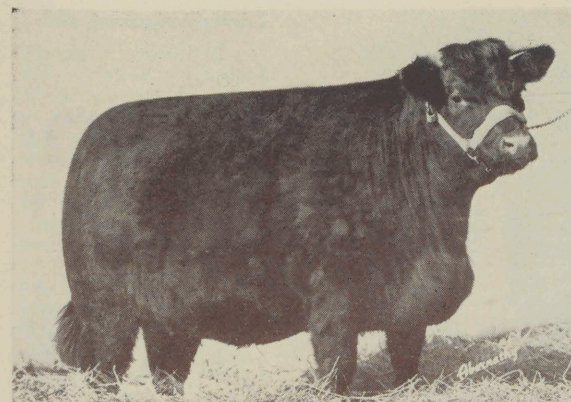
EDELLYN AUGUSTA 41ST 2588853 (RE 1419)

Red, calved April 2, 1950. Bred and owned by Thos. E. Wilson, Wilson, Ill.

SIRE	Edellyn Diamond Mercury 2190521 Roan, Thos. E. Wilson	{ Calrossie Mercury 1957318 White, John MacGillivray
	Edellyn Twofold Mercury 2390225 Dark roan, Thos. E. Wilson	{ Coldoch Bonny Rothes 2031989 Roan, W. McNair Snadden
DAM	Edellyn Princess Royal 19th 2087433 Roan, Thos. E. Wilson	{ Calrossie Mercury 1957318 White, J. MacGillivray
	Cruggleton Proud Prince 2194063 Red, Albert J. Marshall	{ Blood Royal 13th 1753600 Red, Duncan M. Stewart
	Augusta's Royal Pride 2471274 Red, Arnold Bros.	{ Cruggleton Willingdon (291229) Dark roan, A. J. Marshall
	Augusta's Pride 2176330 Red, Arnold Bros.	{ Princess Minette (220746) Roan, A. J. Marshall
		{ Cruggleton Achtoi 2009144 Roan, A. J. Marshall
		{ Augusta's Pride 32d 2089402 Roan, R. A. Smith

Edellyn Augusta 40th

We like her and believe you will like her also. She is a daughter of Edellyn Diamond Mercury. Her dam, Marellbar Augusta 75th, produced the \$3,000 top female in our 1951 sale that sold to Henry Knight of Kentucky. This beautiful heifer is in calf since September 6, 1951, to Saltoun Royal Crest by Calrossie Good News.



Edellyn Augusta 40th

*Her Dam Produced the Top
Female in Our Last Sale*

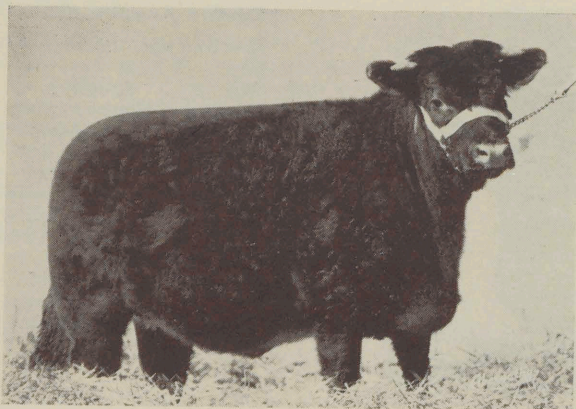
Lot 37

Female

EDELLYN AUGUSTA 40TH 2588852 (RE 1413)

Red, calved Feb. 25, 1950. Bred and owned by Thos. E. Wilson, Wilson, Ill.

SIRE	Calrossie Mercury 1957318 White, John MacGillivray	{ Calrossie Control (255913) White, John MacGillivray
	Edellyn Diamond Mercury 2190521 Roan, Thos. E. Wilson	{ Calrossie Augusta Opal (179796) Dark roan, John MacGillivray
DAM	Coldoch Bonny Rothes 2031989 Roan, W. McNair Snadden	{ Balthayock Grand National (283376) Dark roan, R. Wylie Hill
	Klaymor Footprint 2110652 Red, W. J. Russell	{ Coldoch Rothes Fairy (162726) Red, W. McNair Snadden
	Marellbar Augusta 75th 2224898 Red, Wm. Bartholomay, Jr.	{ Collynie Royal Barrage 1873801 Roan, D. Webster
	Maxwalton Augusta K 23d 200094 Red, Maxwalton Farm, Inc.	{ Calrossie Augusta Queen 2110651 Red, J. MacGillivray
		{ Browndale Cumberland 1883723 Roan, T. Dorsey Jones
		{ Kalarama Augusta 23d 1835332 Roan, Kalarama Farm



Edellyn Winifred 12th

Edellyn Winifred 12th

A line-bred Calrossie Mercury heifer. Her sire was produced through the mating of Calrossie Mercury with the dam of Edellyn Royal Leader. Her dam, Edellyn Winifred 9th, has produced a good calf every year, including bulls that sold to such herds as Poston & Hall of Tennessee, Olaf Tuntland of South Dakota, and Henry Haugen of Minnesota. She sells open.

Line Bred in the Blood of Calrossie Mercury

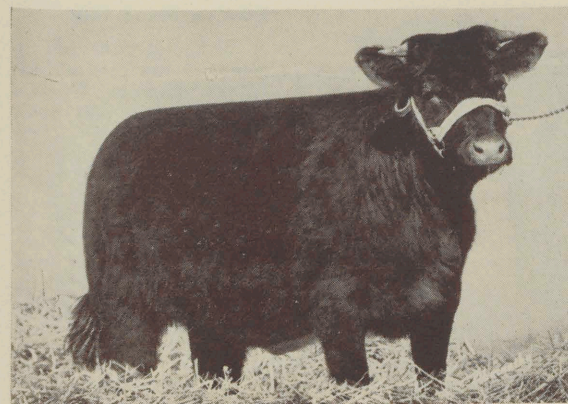
Lot 38

Female

EDELLYN WINIFRED 12TH 2638-994 (RE 1490)

Red, calved March 4, 1951. Bred and owned by Thos. E. Wilson, Wilson, Ill.

SIRE	Calrossie Mercury 1957318 White, John MacGillivray	(Calrossie Control (255913) White, John MacGillivray)
		(Calrossie Augusta Opal (179796) Dark roan, John MacGillivray)
DAM	Edellyn Diamond Mercury 2190521 Roan, Thos. E. Wilson	(Balthayock Grand National (283376) Dark roan, R. Wylie Hill)
		(Coldoch Rothes Fairy (162726) Red, W. McNair Snadden)
	Coldoch Bonny Rothes 2031989 Roan, W. McNair Snadden	(Calrossie Control (255913) White, J. MacGillivray)
		(Calrossie Augusta Opal (179796) Dark roan, J. MacGillivray)
	Winifred 20th 1942404 Red, Miles of View Farms	(Scotston Airman 1873325 Red, Wm. B. Robertson)
		(Winifred 19th 1763879 Roan, Tomson Bros.)



Edellyn Augusta 45th

Edellyn Augusta 45th

The daughters of Edellyn Diamond Mercury have proved great producers and this one should be no exception. Her dam produced the top heifer in our 1951 sale that went to Henry Knight at \$3,000. A full sister to this heifer also sells in this sale. She sells open.

The Daughters of Diamond Mercury are Top Brood Cows

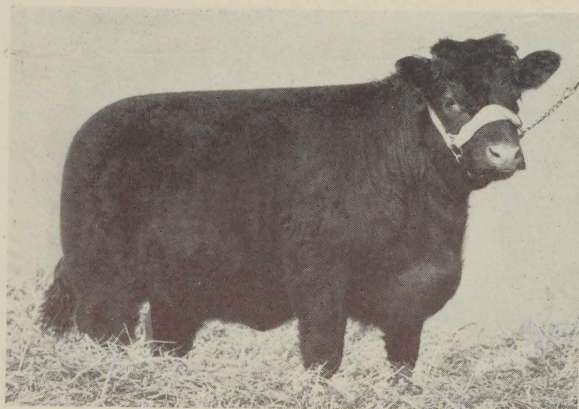
Lot 39

Female

EDELLYN AUGUSTA 45TH 2638-979 (RE 1493)

Red, calved March 8, 1951. Bred and owned by Thos. E. Wilson, Wilson, Ill.

SIRE	Calrossie Mercury 1957318 White, John MacGillivray	(Calrossie Control (255913) White, John MacGillivray)
		(Calrossie Augusta Opal (179796) Dark roan, John MacGillivray)
DAM	Edellyn Diamond Mercury 2190521 Roan, Thos. E. Wilson	(Balthayock Grand National (283376) Dark roan, R. Wylie Hill)
		(Coldoch Rothes Fairy (162726) Red, W. McNair Snadden)
	Klaymor Footprint 2110652 Red, W. J. Russell	(Collynie Royal Barrage 1873801 Roan, D. Webster)
		(Calrossie Augusta Queen 2110651 Red, J. MacGillivray)
	Marellbar Augusta 75th 2224898 Red, Wm. Bartholomay, Jr.	(Browndale Cumberland 1883723 Roan, T. Dorsey Jones)
		(Kalarama Augusta 23d 1835332 Roan, Kalarama Farm)
	Maxwalton Augusta K 23d 2000094 Red, Maxwalton Farm, Inc.	()



Edellyn Maud 14th

Edellyn Maud 14th

A Shallenberger Maud, sired by the son of Calrossie Mercury that is out of the dam of Edellyn Royal Leader. This heifer is out of the same dam as Edellyn Control Mercury that is doing such a wonderful job for Mr. and Mrs. A. J. McAllister of Indiana. A full sister sold at \$1,400 in our 1951 sale.

A Good Heifer from a Very Dependable Family

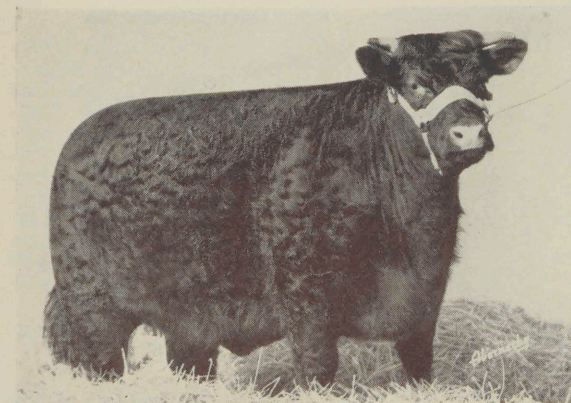
Lot 40

Female

EDELLYN MAUD 14TH 2653-389 (RE 1516)

Red, calved May 17, 1951. Bred and owned by Thos. E. Wilson, Wilson, Ill.

SIRE	Calrossie Mercury 1957318 White, John MacGillivray	{ Calrossie Control (255913) White, John MacGillivray
	Edellyn Diamond Mercury 2190521 Roan, Thos. E. Wilson	{ Calrossie Augusta Opal (179796) Dark roan, John MacGillivray
DAM	Coldoch Bonny Rothes 2031989 Roan, W. McNair Snadden	{ Balthayock Grand National (283376) Dark roan, R. Wylie Hill
	Cruggleton Aspiration 1989959 Red, A. J. Marshall	{ Coldoch Rothes Fairy (162726) Red, W. McNair Snadden
	Maud 119th 2232065 Red, Sni-A-Bar Farms	{ Cruggleton Captivator (276163) RLW, A. J. Marshall
	Maud 116th 1895778 Red, A. C. Shallenberger	{ Augusta Gardenia (120936) Dark roan, A. J. Marshall
		{ Divide Superb 1683191 Red, The Allen Cattle Co.
		{ Maud 94th 1449756 Red, A. C. Shallenberger

**Edellyn Lavender 12th**

This daughter of Edellyn Squadron Leader is from a very dependable family. Her dam produced Edellyn Lavender 11th, a heifer that sold to Brown-Forman Experimental Farms last year, another heifer that sold to Malcolm Lomas of Iowa that produced him a herd bull, and the bull Edellyn Royal Leader 67th that is doing a good job for T. S. Waller of Kentucky. She sells open.

Above is shown Edellyn Lavender 11th, purchased by the Browns of Kentucky at \$1,450 in the 1951 Edellyn sale. Lot 41 in this sale is out of the same dam.

There's a Good One Every Year from this Family

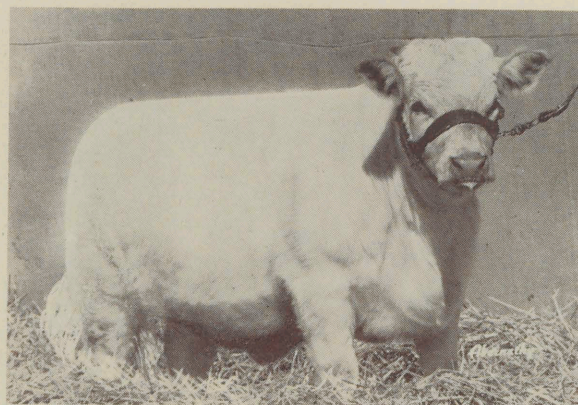
Lot 41

Female

EDELLYN LAVENDER 12TH 2638-990 (RE 1484)

Roan, calved Feb. 4, 1951. Bred and owned by Thos. E. Wilson, Wilson, Ill.

SIRE	Saltoun Squadron Leader 2371578 Dark roan, A. M. T. Fletcher	{ Uppermill Sentinel (325869) Red, James Durno
	Edellyn Squadron Leader 2479459 Roan, Thos. E. Wilson	{ Rosebud Brenda (250954) Dark roan, K. P. MacGillivray
DAM	Edellyn Dorothy 21st 2322803 Red, Thos. E. Wilson	{ Edellyn Royal Leader 2057560 Red, W. McNair Snadden
	Cruggleton Aspiration 1989959 Red, A. J. Marshall	{ Lady Dorothy 94th 2082526 Red, Merryvale Farm
	Sni-A-Bar Lavender 7th 2083330 Red, Sni-A-Bar Farms	{ Cruggleton Captivator (276163) RLW, A. J. Marshall
	Lavender Girl 15th 1966656 Red, McNeill Bros.	{ Augusta Gardenia (120936) Dark roan, A. J. Marshall
		{ Sni-A-Bar Baron Gipsy 1869550 Red, Sni-A-Bar Farms
		{ Lavender Girl 11th 1876628 Red, McNeill Bros.



Edellyn Doris 6th

Edellyn Doris 6th

This sweet white heifer sired by Edellyn Squadron Leader is the first calf produced by Edellyn Doris 5th, a very good daughter of Calrossie Mercury. The dam is a full sister to Edellyn Rival Mercury used with success by George Struve and Chris Gerst in Iowa. She will sell open.

*A Sweet Heifer Out of a
Very Good Young Mercury Cow*

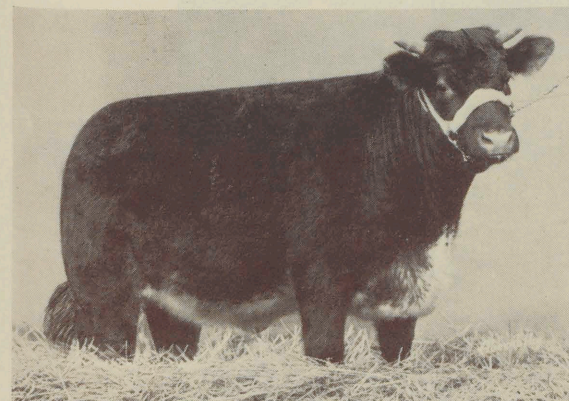
Lot 42

Female

EDELLYN DORIS 6TH 2653-385 (RE 1525)

White, calved June 24, 1951. Bred and owned by Thos. E. Wilson, Wilson, Ill.

SIRE	Saltoun Squadron Leader 2371578 Dark roan, A. M. T. Fletcher	{	Uppermill Sentinel (325869) Red, James Durno
			Rosebud Brenda (250954) Dark roan, K. P. MacGillivray
Edellyn Squadron Leader 2479459 Roan, Thos. E. Wilson		{	Edellyn Royal Leader 2057560 Red, W. McNair Snadden
			Lady Dorothy 94th 2082528 Red, Merryvale Farm
DAM	Edellyn Dorothy 21st 2322803 Red, Thos. E. Wilson	{	Calrossie Control (255913) White, J. MacGillivray
			Calrossie Augusta Opal (179796) Dark roan, John MacGillivray
	Calrossie Mercury 1957318 White, J. MacGillivray	{	Princeton Leader 1763344 Red, Prince of Wales
			Kenwood Doris 1575641 Red, Prince of Wales
	Edellyn Doris 5th 2390229 Red, Thos. E. Wilson	{	
	Roble Doris 1820420 Red, C. E. Sampson	{	



Edellyn Broadhooks 44th

Edellyn Broadhooks 44th

Another heifer from Edellyn's most famous family. It would take a volume to relate the success of all of the members of this family that have gone out from Edellyn Farms. Buy her if you want to make a safe investment.

*Another Good One from
Edellyn's Most Famous Family*

Lot 43

Female

EDELLYN BROADHOOKS 44TH 2619-532 (RE 1472)

Dark roan, calved Oct. 2, 1950. Bred and owned by Thos. E. Wilson, Wilson, Ill.

SIRE	Saltoun Squadron Leader 2371578 Dark roan, A. M. T. Fletcher	{	Uppermill Sentinel (325869) Red, James Durno
			Rosebud Brenda (250954) Dark roan, K. P. MacGillivray
Edellyn Squadron Leader 2479459 Roan, Thos. E. Wilson		{	Edellyn Royal Leader 2057560 Red, W. McNair Snadden
			Lady Dorothy 94th 2082528 Red, Merryvale Farm
DAM	Edellyn Dorothy 21st 2322803 Red, Thos. E. Wilson	{	Calrossie Control (255913) White, John MacGillivray
			Calrossie Augusta Opal (179796) Dark roan, John MacGillivray
	Calrossie Mercury 1957318 White, John MacGillivray	{	Bapton Boxing Day 1772969 Red, C. H. E. Chubb
			Stella 11th 1489198 Roan, Mrs. Duncan Stewart
	Edellyn Broadhooks 13th 2024081 Red, Thos. E. Wilson	{	
	Collynie Broadhooks 12th 1773004 Red, Duthie Webster	{	



Enjoying the shade in the pasture at Edellyn Farms

Lot 44 EDELLYN BUTTERCUP 6TH 2588859 (RE 1426) Female

Red, calved April 15, 1950. Bred and owned by Thos. E. Wilson, Wilson, Ill.

SIRE	Saltoun Squadron Leader 2371578 Dark roan, A. M. T. Fletcher	Uppermill Sentinel (325869) Red, James Durno
		Rosebud Brenda (250954) Dark roan, K. P. MacGillivray
DAM	Edellyn Squadron Leader 2479459 Roan, Thos. E. Wilson	Edellyn Royal Leader 2057560 Red, W. McNair Snadden
	Edellyn Dorothy 21st 2322803 Red, Thos. E. Wilson	Lady Dorothy 94th 2082528 Red, Merryvale Farm
	Calrossie Fearless (297340) Dark roan, John MacGillivray	Calrossie Control (255913) White, John MacGillivray
	Klaymor Buttercup 5th 2320642 Red, G. J. C. Anderson	Calrossie Augusta Susette (189782) Red, John MacGillivray
	Kair Buttercup 2320640 Red, G. J. C. Anderson	Balthayock Orange Command (296347) Dark roan, R. Wylie Hill
		Balthayock Buttercup 7th (198543) Red, R. Wylie Hill

Edellyn Buttercup 6th

This attractive daughter of Edellyn Squadron Leader is out of an imported-in-dam daughter of Calrossie Fearless. She is in calf since December 4, 1951, to Edellyn Royal Leader 114th, many times a champion and perhaps the best bull ever produced at Edellyn Farms.

Lot 45 EDELLYN AUGUSTA 46TH 2640-346 (RE 1489) Female

Red, calved March 15, 1951. Bred and owned by Thos. E. Wilson, Wilson, Ill.

SIRE	Edellyn Royal Leader 2057560 Red, W. McNair Snadden	Coldoch Sensation (275892) Red, W. M. Snadden
		Coldoch Bonny Rother 2031989 Roan, W. McNair Snadden
DAM	Edellyn Royal Leader 101st 2520171 Red, Thos. E. Wilson	Naemoor Immaculate (315706) White, Robert Moubray
	Drynie Clipper 20th 2320564 Dark roan, Robert MacLean	Drynie Clipper 13th (240604) Roan, Robert MacLean
	Edellyn Goldfinder 1786376 Roan, Thos. E. Wilson	Calrossie Goldfinder 1753587 White, John MacGillivray
	Morlunda Augusta 3d 1973032 Red, Oscar Nelson	Edellyn Venus 5th 1714632 Red, Thos. E. Wilson
	Aldie Pamela Augusta 1899147 Roan, Finlay MacGillivray	Calrossie Waverly (262376) Dark roan, J. MacGillivray
		Augusta Maid (110115) Red, F. MacGillivray

Edellyn Augusta 46th

A daughter of Edellyn Royal Leader 101st, the great bull that sold to Pennsylvania State College at \$3,000 in our 1950 sale. Her dam produced a very good heifer that sold to Clausen Bros. in our 1951 sale. Another heifer out of the same dam sells in this sale.

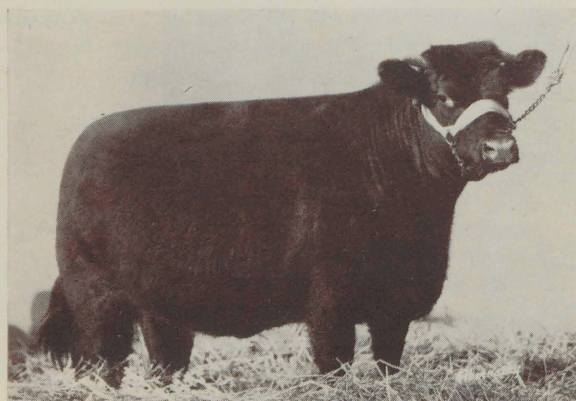
Lot 46 EDELLYN BEAUTY 28TH 2611-497 (RE 1446) Female

Red, calved June 15, 1950. Bred by P. A. Rasmussen & Sons, Goldfield, Iowa; Calved property of Thos. E. Wilson, Wilson, Ill.

SIRE	Calrossie Mercury 1957318 White, J. MacGillivray	Calrossie Control (255913) White, J. MacGillivray
		Calrossie Augusta Opal (179796) Dark roan, John MacGillivray
DAM	Edellyn Marine Mercury 2155986 Red, Thos. E. Wilson	Coldoch Sensation (275892) Red, W. M. Snadden
	Coldoch Marina 2084398 Red, W. McNair Snadden	Aldie Princess Betty (160047) Dark roan, Finlay MacGillivray
	Edellyn Royal Leader 29th 2306923 Red, Thos. E. Wilson	Edellyn Royal Leader 2057560 Red, W. McNair Snadden
	Charter Beauty L 2483736 Red, P. A. Rasmussen & Sons	Edellyn Orange Blossom 50th 2140747 Red, Thos. E. Wilson
	Charter Beauty 2244381 Red, P. A. Rasmussen & Sons	Newallyn Royal Charter 2110588 Red, Harry A. Newman
		Rosaline 2013840 Roan, P. A. Rasmussen & Sons

Edellyn Beauty 28th

A red daughter of Edellyn Marine Mercury, one of the good breeding sons of the Perth champion Calrossie Mercury. Through her dam she inherits the improving blood of Edellyn Royal Leader. She is in calf since October 16 to Edellyn Royal Leader 23rd, whose calves won first prize in the get-of-sire class at the 1950 International Live Stock Show.



Susanna Pauline 2nd

Susanna Pauline 2nd

This is the only heifer in the sale that does not contain Edellyn breeding. However, she is a very good individual and we have great confidence in her pedigree because she is a granddaughter of Bapton Battleship and out of a beautifully bred imported Cluny Pauline cow sired by Calrossie Souvenir. She is bred to our many times champion, Edellyn Royal Leader 114th.

*Out of a Richly Bred
Cluny Pauline Cow*

Lot 47

SUSANNA PAULINE 2D 2633-928 (LE-152)

Female

Light roan, calved Aug. 7, 1950. Bred by S. J. O'Bryan, Lake Villa, Ill.
Owned by Thos. E. Wilson, Wilson, Ill.

SIRE	Bapton Battleship (316198) Red, J. V. Rank	{ Bapton Air Pilot (298495) Dark roan, J. V. Rank
	Beaufort Brigand 2348470 Dark roan, Lord Lovat	{ Bapton Actress 4th (222121) Red, J. V. Rank
DAM	Beaufort Augusta (240297) Red, Lord Lovat	{ Cruggleton Willingdon (291229) RLW, Albert James Marshall
	Calrossie Souvenir (303645) Dark roan, J. MacGillivray	{ Augusta Rubra (210552) Red, Albert James Marshall
	Cluny Pauline 74th 2366997 Dark roan, Mrs. B. H. Linzee Gordon	{ Calrossie Mercury 1957318 White, J. MacGillivray
	Cluny Pauline 53rd (208030) Roan, Mrs. B. H. Linzee Gordon	{ Calrossie Augusta Mary (200015) Red, J. MacGillivray
		{ Calrossie Command (275428) Dark roan, John MacGillivray
		{ Cluny Pauline 26th (71727) Dark roan, Lady Cathcart

Edellyn Golden Chain 8th

This granddaughter of Imp. Pittodrie Upright is out of a dam sired by Edellyn Royal Leader 8th and her granddam was one of the best females ever produced and sold by Edellyn Farms. This good heifer is in calf since October 10 to Saltoun Royal Crest by Calrossie Good News.



Millgate Golden Chain 4th, shown above, was purchased by Edellyn Farms from Millgate Farms in 1949 at \$1,700. She is the dam of Lot 48 in this sale.

*A Granddaughter of
Pittodrie Upright*

Lot 48

EDELLYN GOLDEN CHAIN 8TH 2588864 (RE 1425)

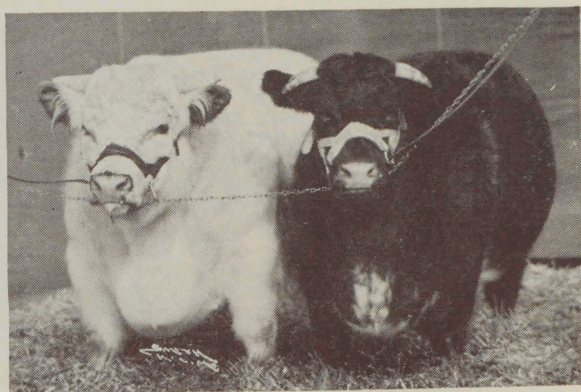
Female

Dark roan, calved April 20, 1950. Bred by George W. Rossetter & Sons, Wadsworth, Ill.;
Calved property of Thos. E. Wilson, Wilson, Ill.

SIRE	Pittodrie Upright 2380873 Red, R. Laidlaw Smith	{ Bapton Upright (316211) Red, J. V. Rank
	Millgate Upright 2502183 Red, Sni-A-Bar Farms	{ Pittodrie Andrea (243048) Red, R. Laidlaw Smith
DAM	Gipsy Bride 9th 2274046 Red, Ben G. Studer	{ Prince William 2186498 Red, James Durno
	Edellyn Royal Leader 8th 2197010 Red, Thos. E. Wilson	{ Gipsy Bride 6th 2191022 Roan, Ben G. Studer
	Millgate Golden Chain 4th 2495210 Roan, George W. Rossetter & Sons	{ Edellyn Royal Leader 2057560 Red, W. McNair Snadden
	Millgate Golden Chain 2266524 Dark roan, Thos. E. Wilson	{ Marellbar Golden Drop 1965833 Roan, Thos. E. Wilson
		{ Edellyn Bonny Mercury 2140728 White, Thos. E. Wilson
		{ Edellyn Golden Chain 7th 2126872 Roan, Thos. E. Wilson

PERFORMANCE

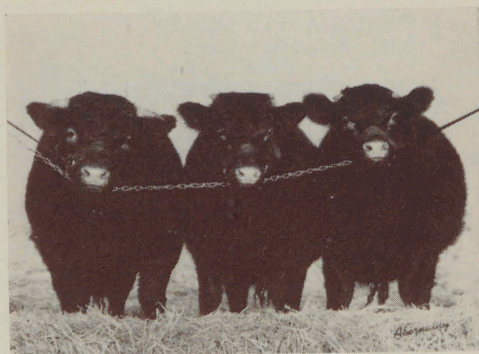
*is the test which
marks the safe road*



Sni-A-Bar Control and Princess Elizabeth, two of the most famous animals in American show ring history. Both sired by Edellyn Campeon Mercury. In the Sni-A-Bar Dispersion the former sold at \$10,000 and the latter at \$5,700.

This is the story of eleven bulls sold through annual Edellyn sales, a few of their accomplishments, and the accomplishments of their sons and daughters. If space permitted, the story could include scores of other Edellyn bulls. Those chosen for this discussion were selected because they have been used in widely separated parts of the United States and thus indicate the widespread influence of Edellyn blood. The full story of Edellyn bloodlines represents a parallel to the progress of the Shorthorn industry.

EDELLYN CAMPEON MERCURY was purchased in the 1942 Edellyn sale for \$4,650 by Sni-A-Bar Farms, Grain Valley, Missouri. The 1946 International was an Edellyn Campeon Mercury year. A son,



These three calves, all by Sni-A-Bar Randolph, a many times champion son of Edellyn Campeon Mercury, won first prize in the junior get-of-sire class at the 1951 International for the Browns of Kentucky.

Sni-A-Bar Control, was named the grand champion bull for the second consecutive year. Another son, Sni-A-Bar Randolph, was the reserve champion bull. A daughter, Princess Elizabeth, she a full sister to the \$6,000 Princess Susanna, was the first prize senior yearling heifer. In the group classes, sons and daughters of Edellyn Campeon Mercury won first prize for get-of-sire, first three bulls, first two bulls, first pair of yearlings, and first pair bull and female.

SNI-A-BAR RANDOLPH, sold to the Browns of Kentucky for \$7,500 the next year, returned to the 1947 International where he was again the reserve champion. Calves by him at the 1951 International won the junior get-of-sire, first prize senior yearling bull, first junior bull calf, and second senior heifer calf, as well as several group awards. The calves by Sni-A-Bar Randolph and by other sons of Edellyn Campeon Mercury are now building a better breed wherever located. And don't forget... the fountain head for this improving line was **Edellyn Farms**.

EDELLYN ROYAL LEADER 2nd was sold in the 1944 Edellyn sale to H. L. Straus, Cherry Hill Farm, Reisterstown, Maryland, for \$6,200. He established a new dynasty in Polled Shorthorns siring among many others winners at the 1947 International Polled Show the first prize get, and the reserve champion bull, Cherry Hill Royal Oak x, whose sons and daughters have averaged well over \$1,000 for Carl Johnson, DeKalb, Illinois.

At the 1946 International the Cherry

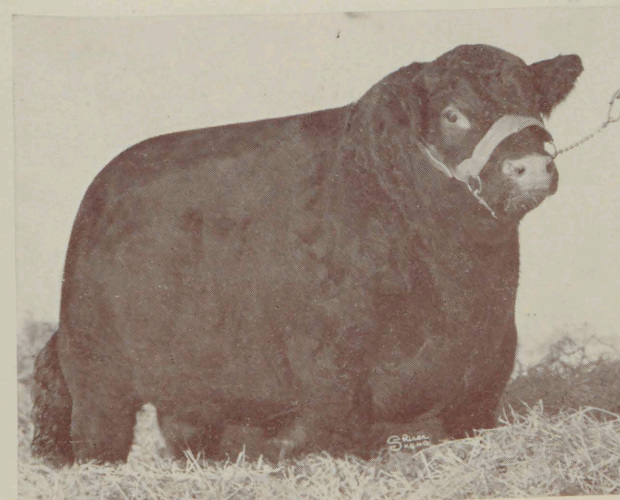
Hill sons and daughters of Edellyn Royal Leader 2nd won three firsts in individual classes and placed second in the get-of-sire.

The grand champion Polled Shorthorn bull of the 1949 International was his son Cherry Hill Royal Leader x. The same year Cherry Hill won all the groups and for the fourth consecutive year exhibited the best ten head.

In the 1952 Polled Shorthorn Congress the grand champion female was Avenel Farms C & P Royal Gloster Glee x, a granddaughter of Edellyn Royal Leader 2nd. She sold for \$3,500 to Lynnwood Farms and established a new female price record for that event. Polled Shorthorn breeders agree that the blood of Edellyn Royal Leader 2nd has done more to improve this branch of the breed than any other line. And don't forget... the fountain head for this improving line was **Edellyn Farms**.

EDELLYN ROYAL LEADER 10th was the bull selected by Ohio State University. He was by Edellyn Royal Leader and out of a daughter of Calrossie Mercury. His first calf, Leader's Lavender Lady, placed second in a class of 30 senior heifer calves at the 1946 International and sold for \$2,700 to the Colemans of Virginia. In the 1947 International, Leader's Lavender 4th, another daughter, placed second in a class of 39 summer yearlings.

Ohio State University has sold ten head by Edellyn Royal Leader 10th through the



Above—Cherry Hill Royal Oak x, reserve champion Polled Shorthorn bull International Live Stock Show. This son of Edellyn Royal Leader 2nd is now siring winners for Carl M. Johnson, DeKalb, Illinois.

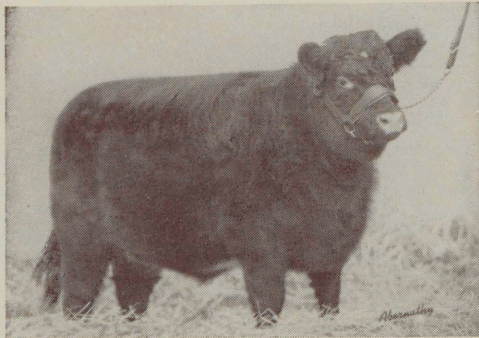
Cherry Hill Royal Leader x, grand champion Polled Shorthorn bull at the 1949 International Live Stock Exposition. Sire, Edellyn Royal Leader 2nd. He is now siring show calves for Avenel Farm, Bethesda, Maryland.



First prize get-of-sire, 1947 International Polled Shorthorn Show. Sire, Edellyn Royal Leader 2nd. Bred and exhibited by Cherry Hill Farm, Reisterstown, Maryland.

International Congress sales in the last five years. They have averaged \$1,496. This record was climaxed with the 1951 International Congress champion and first prize two-year-old bull Leader's Royal Sultan, that sold for \$3,700 to Roy Perringer, Belmont, Washington. And don't forget... the fountain head for this improving line was **Edellyn Farms**.

EDELLYN ROYAL LEADER 11th... This was the 1944 International Congress champion purchased by Byron Hawks,



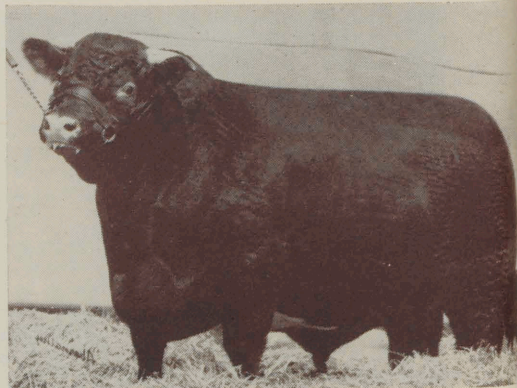
Leader's Boyne Lady by Edellyn Royal Leader 10th. First prize junior calf and reserve champion female at the 1948 International. Typical of the calves by Edellyn Royal Leader 10th produced at Ohio State University.

Pullman, Washington. In 1947 Edellyn Royal Leader 11th sired the \$1,200 second top selling heifer of the Inland Empire Fall Female Sale. In the 1948 Inland Empire Fall Female Sale he sired the \$1,100 top selling heifer.

Sons of Edellyn Royal Leader 11th have gone into some of the West's best herds. Royal Leader 7th purchased by Almos K. Reynolds, Walla Walla, Washington, is typical of these. The 1951 Inland Empire grand champion bull, Reykirk Royal



Reykirk Baron, 1952 Inland Empire grand champion bull bred by Almos K. Reynolds, Walla Walla, Washington, and sold for \$1950 to Leo Banks, Spanish Fork, Utah. Reykirk Baron is by Royal Leader 7th by Edellyn Royal Leader 11th. Last year a half brother won the same honor. To mate to the heifers by Royal Leader 7th, last year Almos Reynolds purchased one of the best bulls in the Edellyn sale.



The 1951 International Congress champion bull, Leader's Royal Sultan by Edellyn Royal Leader 10th. This bull was bred and exhibited by Ohio State University. First prize two year old in the open International show and purchased for \$3,700 by Roy Peringer, Belmont, Washington.

Leader, was sired by Royal Leader 7th. The 1952 Inland Empire grand champion bull, Reykirk Baron, was also sired by Royal Leader 7th. And don't forget... the fountain head for this improving line was **Edellyn Farms.**

EDELLYN ROYAL LEADER 17th was the bull purchased by Otto G. Johnson, Rio, Wisconsin, in the 1945 Edellyn sale for \$2,800. He sired Ransom Augusta 5th, 1951 International Congress grand champion female. He also sired the champion heifer of the 1950 National Shorthorn sale at Memphis and the grand champion female of the 1951 Kentucky State Sale. The grand champion bull of the 1952 Florida State Sale was out of a daughter of Edellyn Royal Leader 17th and was sired by a grandson of Edellyn Royal Leader. And don't forget... the fountain head for this improving line was **Edellyn Farms.**

EDELLYN ROYAL LEADER 19th was the bull purchased by Dr. S. A. Donahoe for \$2,800 in the 1945 Edellyn sale to mate to the daughters of another Edellyn sire, Edellyn Loyal Mercury. Eight sons and daughters of Edellyn Royal Leader 19th sold through the Sioux Empire sale have averaged \$1,229. This includes Don Hill Royal Leader 37th, \$1,500 top of the 1950 sale, and Don Hill Royal Leader 43rd, \$3,800 champion and Sioux Empire record price bull sold to N. T. Findahl, Waterville, Minnesota.

The grand champion female of the 1951 National Shorthorn Show at Omaha was

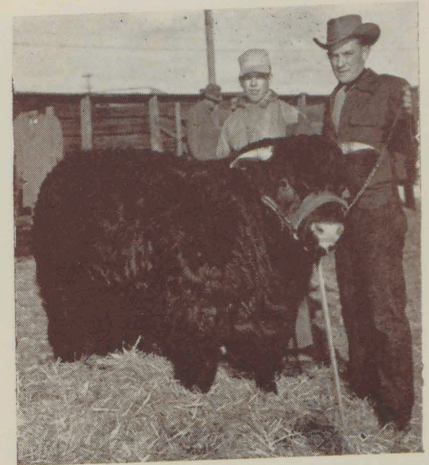
Don Hill Bertha 2nd by Edellyn Royal Leader 19th.

Edellyn Royal Leader 19th sired Edwin Royal Leader, grand champion bull of the 1949 Iowa State Fair, second prize two-year-old at the International that year and one of the most popular bulls of the breed. Edwin Royal Leader sired Edwin Douglas Leader, 1950 first prize International junior yearling purchased for \$3,500 by Wilbur P. Spring & Son, Belgrade, Montana.

The 1951 International grand champion bull, Edwin Leader, is also a son of Edwin Royal Leader. This bull sold for \$10,000 in the 1951 International Sale to Crown Crest Farms, Lexington, Kentucky. And don't forget... the fountain head for this improving line was **Edellyn Farms.**

EDELLYN ROYAL LEADER 21st was the 1945 Congress champion bull purchased for \$7,000 by Hal Williams, Madera, California. Mr. Williams brought out the first calves by Edellyn Royal Leader 21st at the 1948 California State Sale. Here Sierra Leader 5th was the champion and sold for \$1,175. Sierra Sultan Leader was the top selling bull at \$1,200. A third, calf was the grand champion female. That year all of the champions at the California State Fair went to Williams and three of these were sired by Edellyn Royal Leader 21st. His get placed first, also.

At the Cow Palace in San Francisco, under stiff national competition, Williams



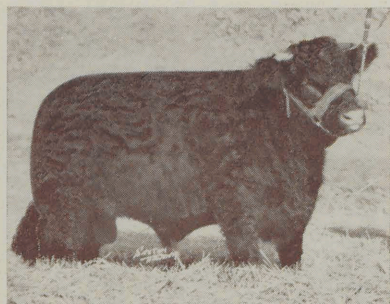
Reykirk Royal Leader, left, grand champion bull of the 35th Annual Inland Empire Spring Show and Sale. He is a son of Royal Leader 7th by Edellyn Royal Leader 11th and was bred by Almos K. Reynolds, Walla Walla, Washington. Sold at \$1,550.

in 1948 took first prize "get" and best ten head on calves by Edellyn Royal Leader 21st. Back he came in 1949 with more of them to win the bull grand championship and the first prize get-of-sire.

In 1950 the Williams herd was purchased by Page Lamoreaux, Napa, Cali-



Edwin Leader, grand champion bull of the 1951 International Livestock Exposition. Bred by McCone Bros., Defiance, Iowa. He is a fourth generation Edellyn Royal Leader... a bloodline that carries improvement into each succeeding generation. Shown in the picture are Dale McCone and Bert McCone, the breeders (with sticks) and Pat Patterson, R. L. Reineman and Howard Reineman, who bought the bull at \$10,000 for their Crown Crest herd in Kentucky.

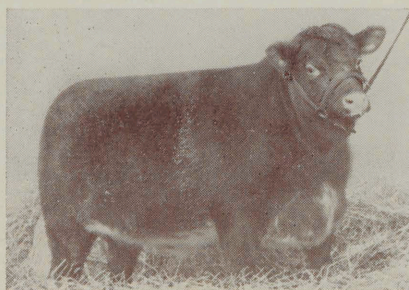


Sierra Supreme Leader, reserve champion bull at the Cow Palace in San Francisco. Sire, Edellyn Royal Leader 21st.

fornia. A number of the cattle also went to Fresno State College. At the Cow Palace that year Fresno State showed the champion junior "get" by Edellyn Royal Leader 21st, and the grand champion female by him. Lamoreaux exhibited the first prize junior yearling by Edellyn Royal Leader 21st.

At the 1951 Cow Palace, Fresno State was back with the grand champion female, first prize two-year-old heifer, first senior yearling heifer and first summer yearling heifer, all by Edellyn Royal Leader 21st. Lamoreaux had the top pair of calves and first senior bull calf. Lamoreaux also had a calf by Edellyn Royal Leader 100th and out of Edellyn Dorothy 23rd. This had been purchased in dam at the Edellyn sale and was the first prize junior bull calf. And don't forget... the fountain head for this improving line was **Edellyn Farms**.

EDELLYN ROYAL LEADER 22nd was purchased by E. M. Sims, Elcona Farms,



Elcona Baroness, grand champion female Indiana State Fair and National Shorthorn Show in 1950. Bred by E. M. Sims, Elkhart, Indiana, and sired by Edellyn Royal Leader 22nd.

Elkhart, Indiana, in the 1945 sale for \$6,500. The first son of Edellyn Royal Leader 22nd to sell at auction was the reserve champion of the 1948 Indiana All-Bull Sale. The following year both the champion and reserve champions were Elcona sons of Edellyn Royal Leader 22nd and at the 1952 Indiana All-Bull sale Elcona Major Leader by Edellyn Royal Leader 22nd sold at the top price of \$1,500.

At the 1949 International, Elcona placed second in the important get-of-sire class with sons and daughters of Edellyn Royal Leader 22nd. They also exhibited in this great show the second prize two-year-old female, second prize senior heifer calf, second prize pair of females, and third prize summer yearling. In all the classes in which they were exhibited the Royal Leader 22nd calves competed with the progeny of 102 sires and their average placing was second, being bettered only by the calves by 22nd's sire, Edellyn Royal Leader. In average placing Elcona ranked first of all exhibitors at the 1949 International.

At the 1950 shows Elcona blazed a hot trail again with the calves by Edellyn Royal Leader 22nd. At Indiana, Elcona Baroness was the grand champion female. At the National Show in Memphis she was the reserve champion. She won her class at the 1950 International as did her stall mate, Elcona Fragrance 2nd, and together they won first in a class of 24 pairs of females. And don't forget... the fountain head for this improving line was **Edellyn Farms**.

EDELLYN PEERLESS MERCURY was purchased by Curtiss Candy Company in the 1943 Edellyn Sale for \$8,000. He was the 1944 Denver champion and was a full



Elcona Fragrance 2nd, also by Edellyn Royal Leader 22nd. Member of second prize get and pair of females at the 1949 International. Produced in the Elcona Herd, owned by E. M. Sims.



First prize get-of-sire at Fort Worth, Houston and Denver Shows in 1948. Exhibited by Curtiss Candy Co. of Illinois and sired by Edellyn Peerless Mercury.

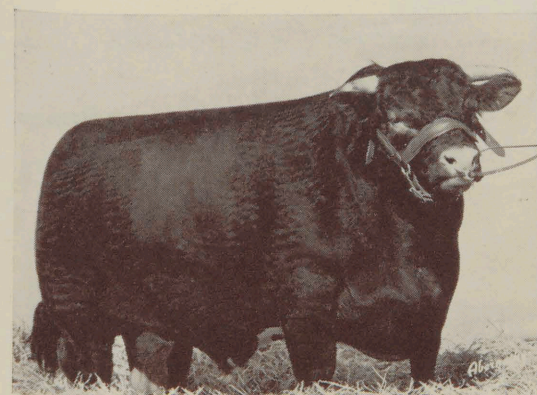
brother to Edellyn Campeon Mercury. Calves by him first appeared at the 1947 Wisconsin State Fair where they won the first prize get-of-sire, grand champion bull, reserve champion female and four other blue ribbons. At the 1947 International, sons and daughters of Edellyn Peerless Mercury won second prize two-year-old bull, second pair of bulls, third summer senior yearling heifer, third senior yearling heifer, first junior heifer calf, and placed third in the get-of-sire. This get went on to win at Houston, Ft. Worth and Denver.

Another Edellyn bred bull, Curtiss Candy Leader by Edellyn Royal Leader, was used in the Curtiss Candy herd on the daughters of Edellyn Peerless Mercury with great success. The descendants of these two bulls averaged \$1,302 in the recent Curtiss Candy-Anoka Sale. And don't forget... the fountain head for this improving line was **Edellyn Farms**.

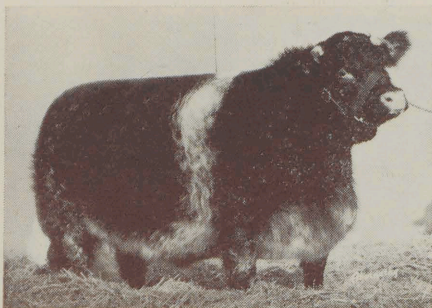
THE BURTON SHORTHORN HERD at Como, Mississippi is another herd that

solved its herd bull problem in a like manner. They purchased foundation females in Edellyn sales along with Edellyn Mascot Mercury. In this, the South's largest Shorthorn herd, only sires combining the blood of Calrossie Mercury and Edellyn Royal Leader have been used. Along with Edellyn Mascot Mercury they have used his sons, Burton Mercury 8th and Burton Mercury 2nd. Also they have used Burton Royal Leader by Edellyn Royal Leader and out of Edellyn Crocus 5th by Calrossie Mercury, along with his son Burton Royal Leader 2nd.

It is this blood that produced for the owner of the Burton herd, Fred Taylor, the grand champion female of the 1948 Mississippi Sale, the grand champion female of the 1949 Mississippi Sale, the champion bull and champion female of the 1950 Mississippi Sale, the grand and reserve champion females of the 1951 Mississippi Sale, and the \$1,035 top female of the 1952 Mississippi State Sale.



Ashbourne Bank Mercury by Sni-A-Bar Randolph by Edellyn Campeon Mercury. First prize senior yearling. Bred and exhibited by the Browns of Kentucky, Louisville. Earlier he had won grand championship at Ohio and first at numerous other state fairs.



Curtiss Candy C Maid. Second prize junior yearling heifer at the 1951 International. Sire, Curtiss Candy Crusader. Her sire is a grandson of Edellyn Royal Leader and Calrossie Mercury. Her dam is by Edellyn Peerless Mercury.

This year the first big open show of Shorthorns and Polled Shorthorns in the South was held at Tampa, Florida, with nine herds from four states competing. The grand champion bull was Burton Royal Leader 3rd. The grand champion female was Burton Mercury Maid 2nd. Fred Taylor also won five individual classes, all the group awards, the get-of-sire and the junior get-of-sire. And don't forget... the fountain head for this improving line was **Edellyn Farms**.

EDELLYN VALIANT MERCURY was the bull purchased by D. M. Gregg, Harrisonville, Missouri, for \$4,100 in the 1945 Edellyn sale. He was the second prize summer yearling at the 1945 International, the only time shown. He is the sire of the 1949 International reserve champion



Burton Royal Leader 3rd, grand champion bull 1952 Florida State Fair. His sire is a son of Edellyn Royal Leader out of a Calrossie Mercury dam. Bred by Fred Taylor, Como, Mississippi.

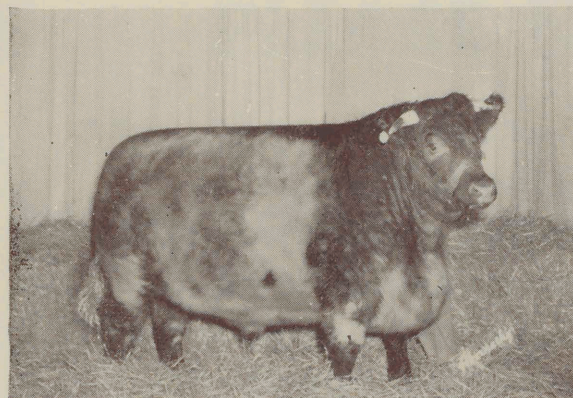


Gregg Farms Hoarfrost—owned by Kansas State College, Manhattan, Kansas, this son of Edellyn Valiant Mercury was the reserve grand champion bull at the 1949 Chicago International Livestock Show, grand champion at the 1950 Denver Stock Show.

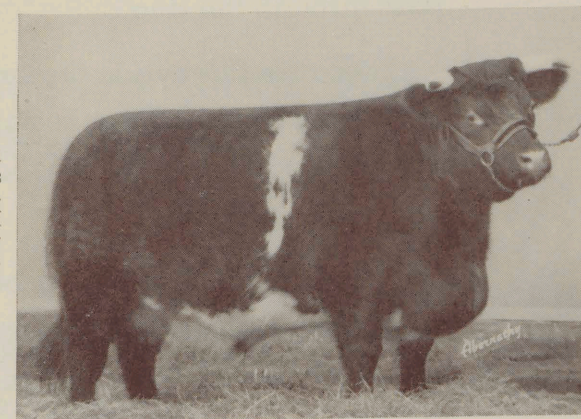
and 1950 Denver grand champion bull, Gregg Farms Hoarfrost. Many other sons and daughters, although never shown, are doing a grand job in strong herds over the nation. Typical of these is Gregg Farms Commander that heads the Tomson Bros., Wakarusa, Kansas, herd. Gregg Farms Mercury, purchased by Dr. S. A. Donahoe, Sioux Falls, South Dakota, for \$3,500, was the reserve champion of the 1948 American Royal and also the reserve champion of the 1948 Cow Palace. Twenty-one sons, 52 daughters and 25 calves at foot by Edellyn Valiant Mercury were sold in the Gregg Farms Dispersion. The top twenty sired by him in that dispersion averaged \$1,038. And don't forget... the fountain head for this improving line was **Edellyn Farms**.

*Edellyn Productions
Are National Favorites--
A Proven Way of
Advancement*

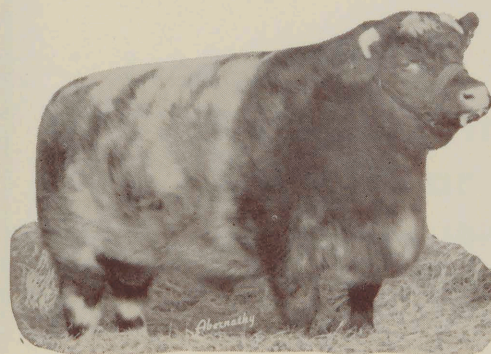
You'll Find Plenty of Edellyn Blood in The International Grand Champion Steers



Left—**Tomahawk**, grand champion steer over all breeds at the 1945 International. His sire, Edellyn Grand Command, was bred at Edellyn Farms and was owned by Carl Henkel, Mason City, Iowa.



Right—**Royal Jupiter**, grand champion steer over all breeds at the 1946 International, exhibited by Oklahoma A & M College. His dam was sired by a son of Browndale Archer, he bred at Edellyn Farms.



Left—**Big Boy**, grand champion over all breeds at the 1947 International. His sire, Mercury's Aspiration by Edellyn Campeon Mercury, was owned by O. H. Deason of Oklahoma who bred the steer.

7 HE annual Edellyn Auction Sales of Shorthorn cattle have been held since the year 1926. At a certain point during the auction on June 2nd, 1952, the 1,000th animal to be offered in an Edellyn Sale will pass through the ring.

Because Edellyn is the first to achieve such a distinction, this milestone in Edellyn Farms history will be the occasion for a suitable celebration.

The details are not to be announced in advance. It is sufficient to say that the buyer of this 1,000th Edellyn sale animal will be honored in a manner long to be remembered.

PLEASE NOTE

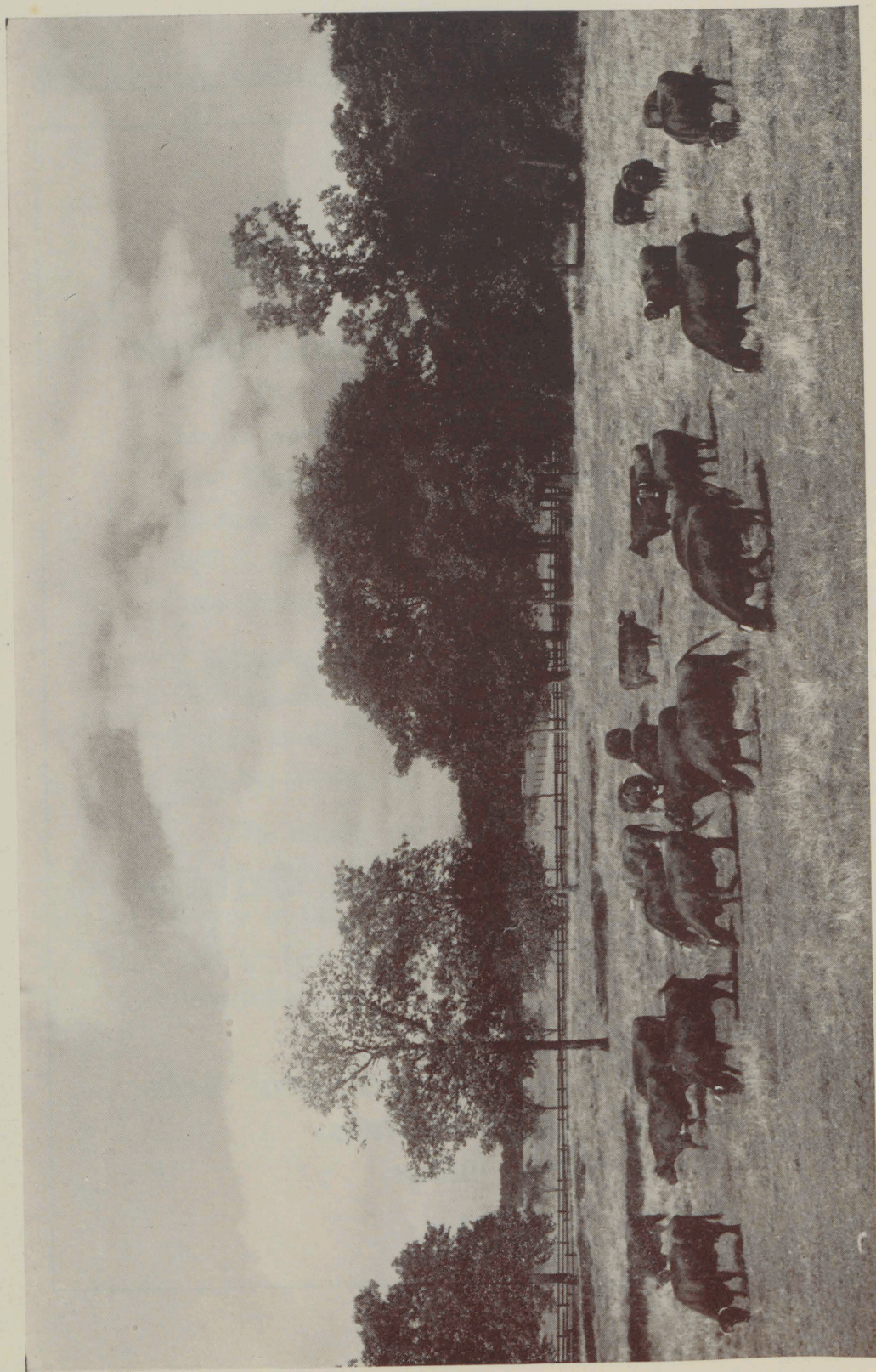
America's Favorite Sale Circuit

**May 31--The Hickories--
Otto G. Johnson Sale,
Pardeeville, Wisconsin.**

**June 1--
Visit Edellyn Farms and
Marellbar Farms.**

**June 2--
Edellyn Farms Sale--
Wilson, Illinois**

**June 3
Marellbar Invitational Sale
--Marellbar Farms,
Libertyville, Illinois.**



Edellyn's famous cow herd insures every calf a good dam.

INDEX

Edellyn Classic Mercury
Edellyn Fashion Leader
Edellyn Glorious Leader
Edellyn Halo Mercury
Edellyn Prim Mercury
Edellyn Royal Leader 137th
Edellyn Royal Leader 142nd
Edellyn Royal Leader 148th
Edellyn Royal Leader 151st
Edellyn Royal Leader 152nd
Edellyn Senator Mercury

BULLS

Lot 7
Lot 1
Lot 11
Lot 8
Lot 9
Lot 6
Lot 2
Lot 5
Lot 3
Lot 4
Lot 10

FEMALES

Edellyn Augusta 40th
Edellyn Augusta 41st
Edellyn Augusta 42nd
Edellyn Augusta 43rd
Edellyn Augusta 44th
Edellyn Augusta 45th
Edellyn Augusta 46th
Edellyn Beauty 28th
Edellyn Beauty 29th
Edellyn Broadhooks 42nd
Edellyn Broadhooks 44th
Edellyn Buttercup 6th
Edellyn Butterfly 12th
Edellyn Clara Belle 3rd
Edellyn Clipper 51st
Edellyn Clipper 52nd
Edellyn Clipper 53rd
Edellyn Crocus 10th
Edellyn Doris 6th
Edellyn Dorothy 25th
Edellyn Dorothy 26th
Edellyn Duchess Gloster 19th
Edellyn Golden Chain 8th
Edellyn Goldie 17th
Edellyn Helen
Edellyn Lavender 12th
Edellyn Maud 14th
Edellyn Myrtle 26th
Edellyn Orange Blossom 83rd
Edellyn Orange Blossom 85th
Edellyn Orange Blossom 86th
Edellyn Princess Royal 34th
Edellyn Rosemary 23rd
Edellyn Rosewood 65th
Edellyn Rosewood 66th
Edellyn Winifred 12th
Susanna Pauline 2nd

Lot 37
Lot 36
Lot 28
Lot 20
Lot 26
Lot 39
Lot 45
Lot 46
Lot 21
Lot 19
Lot 43
Lot 44
Lot 34
Lot 14
Lot 13
Lot 31
Lot 23
Lot 27
Lot 42
Lot 12
Lot 35
Lot 33
Lot 48
Lot 22
Lot 25
Lot 41
Lot 40
Lot 24
Lot 18
Lot 16
Lot 29
Lot 15
Lot 32
Lot 30
Lot 17
Lot 38
Lot 47

Memorandum